



## MLS250

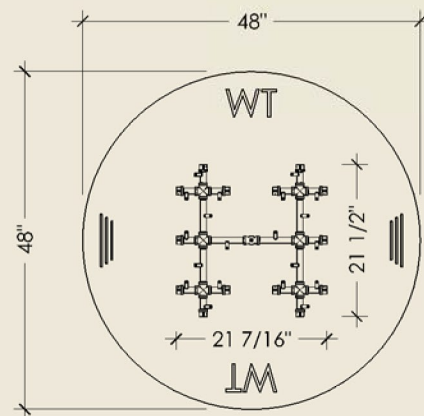
### PRODUCT DESCRIPTION:

The MLS250 is established with a specific air-to-gas mixture ratio which produces a taller, brighter flame while using half the fuel of conventional fire rings. Operates on either Natural Gas (NG) or Liquid Propane (LP). The MLS250 comes with a standard 48" aluminum plate. Other plate options available. Please discuss these options with your sales representative.

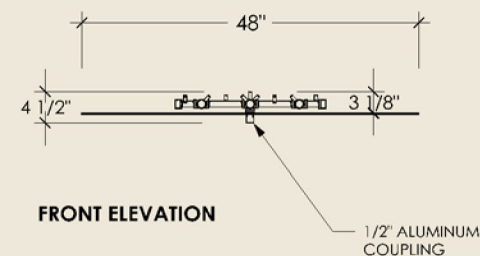
### MLS250:

MAX OUTPUT: 250,000 BTU WEIGHT: ##lbs. DIMENSION: 48"L x 48"W x 4 1/2"H

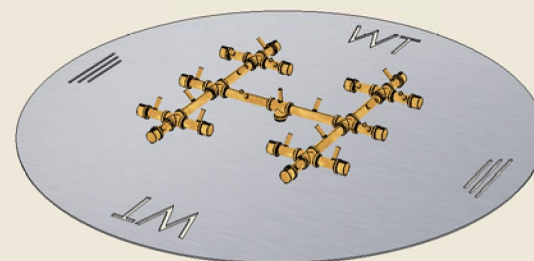
Made from brass and aluminum, the MLS250 is noncorrosive and comes with a FULL LIFETIME WARRANTY.



TOP ELEVATION



FRONT ELEVATION



MLS250 - Match Lit 250K System shown with 48" round plate. Other plate options available

Western Log Home Supply  
2501 S Louise AVE 90546  
Sioux Falls, SD 57109  
(970) 315-2660  
www.westernloghomesupply.com

### Notes:

1. For outdoor/exterior use only.
2. Modification of product will void any certification and warranty.
3. Follow all installation instructions and local codes.
4. Recommended to be installed by a certified plumbing professional.
5. All dimensions are true and reflect Warming Trends' specifications as of the Revision Date.

### LEGAL INFORMATION:

ALL RIGHTS RESERVED. INFORMATION IN THIS DOCUMENT IS CONFIDENTIAL AND IS EXCLUSIVE PROPERTY OF WARMING TRENDS. DELIVERY OF THIS DOCUMENT OR ANY COPY THEREOF OR DISCLOSURE OF SUCH INFORMATION TO UNAUTHORIZED PERSONS IS FORBIDDEN WITHOUT EXPRESSED WRITTEN PERMISSION OF WARMING TRENDS.

REVISION DATE 03/10/2015

MLS250