

CCS 2 to GB/T ADAPTER OWNER'S MANUAL



COMMUNICATIONS REGULATION

WIRELESS AND ELECTROMAGNETIC INTERFERENCE

The device described in this manual may cause interference of wireless electromagnetic wave. If the correct use principle in this manual is not followed, it may cause interference to wireless TV and broadcasting.

STANDARD-COMPLIANT

The adapter complies with the European Electromagnetic Interference standard (LVD)2006/95/EC and (EMC)2004/108/EC
The communication protocol is DIN 70121 / ISO 15118 and 2015 GB/T 27930.

ERRORS AND OMISSIONS

If you find any errors or omissions in this manual, please notify your local distributor by email.

SUPPORT AVAILABLE VEHICLE BRANDS AND CHARGING PILE BRANDS

GB/T Vehicle side support brand											

COMBO 2 Charger side support brand											

SAVE THESE IMPORTANT SAFETY INSTRUCTIONS. (This document contains important instructions and warnings that must be followed when use the adapter)

⚠️ WARNINGS

- Read this document before using the COMBO 2 Adapter . Failure to follow any of the instructions or warnings in this document can result in fire, electrical shock, serious injury or death.
- The COMBO 2 Adapter is designed only for charging a GB/T vehicle (China charging standard car). Do not use it for any other purpose or with any other vehicle or object. The COMBO 2 Adapter is intended only for vehicles that do not require ventilation during charging.
- Do not use the COMBO 2 Adapter if it is defective, appears cracked, frayed, broken or otherwise damaged, or fails to operate.
- Do not attempt to open, disassemble, repair, tamper with, or modify the COMBO 2 Adapter. The adapter is not user serviceable. Contact the reseller for any repairs.
- Do not disconnect the COMBO 2 Adapter while charging the vehicle.
- Do not use the COMBO 2 Adapter when either you, the vehicle, the charging station, or the COMBO 2 Adapter is exposed to severe rain, snow, electrical storm or other inclement weather.
- When using or transporting the COMBO 2 Adapter, handle with care and do not subject it to strong force or impact or pull, twist, tangle, drag or step on the COMBO 2 Adapter to protect from damage to it or any components.
- Protect the COMBO 2 Adapter from moisture, water and foreign objects at all times. If any exist or appear to have damaged or corroded the COMBO 2 Adapter, do not use the COMBO 2 Adapter.
- Do not touch the COMBO 2 Adapter' s end terminals with sharp metallic objects, such as wire, tools or needles.

⚠️ WARNINGS Cont'd

- If rain falls during charging, do not allow rainwater to run along the length of cable and wet the COMBO 2 Adapter or the vehicle' s charging port.

- If the COMBO 2 charging station' s charge cable is submerged in water or covered in snow, do not insert the COMBO 2 Adapter' s plug. If, in this situation,the COMBO 2 Adapter' s plug is already plugged in and needs to be unplugged,stop charging first,then unplug the COMBO 2 Adapter' s plug.
- Do not damage the COMBO 2 Adapter with sharp objects.
- Do not insert foreign objects into any part of the COMBO 2 Adapter.
- Ensure that the COMBO 2 charging station' s charge cable and the COMBO 2 Adapter do not obstruct pedestrians or other vehicles or objects.
- Use of the COMBO 2 Adapter may affect or impair the operation of any medical or implantable electronic devices, such as an implantable cardiac pacemaker or an implantable cardioverter defibrillator. Check with the electronic device manufacturer concerning the effects that charging may have on such electronic device before using the COMBO 2 to GB/T Adapter.
- Do not use cleaning solvents to clean the COMBO 2 to GB/T Adapter.
- If you have any questions or concerns about your COMBO 2 to GB/T Adapter, contact the local reseller.

SPECIFICATIONS

Use only to connect the charging cable on a COMBO 2 charging station to a GB/T vehicle that has been enabled for DC charging. The location of the charge port will vary depending on your vehicle model. Refer to your GB/T vehicle's owner documentation for the location of the charge port and more detailed charging instructions.

Full current may not be available when operating at extreme temperatures.



CAUTION: Do not operate or store the COMBO 2 adapter in temperatures outside the ranges listed above.

Current	200ADC MAX CONT
Voltage	100-1000 VDC
IP Degrees	IP55
Operating Temperature	-22°F to 122°F -30°C to +50°C
storage Temperature	-40°F to +185°F -40°C to +85°C
Packing size(L*W*H)	350*172*115mm
Weight (kg/pound)	2kg

CHARGING TIME

The product is only applicable to the COMBO2 charger station for the GB/T Vehicle DC fast charging. Different brands of GB/T Vehicle has different DC charger port location. Please refer to the user manual of the specific GB/T vehicle brand, find the corresponding DC charge port and understand its charging process.

The charging time depends on the available voltage and current of the charging station. Affected by various factors, charging time may also be affected by the temperature of the vehicle battery: too high or too low temperature of the vehicle battery may limit the charging current, or even do not allow charging to start. The vehicle will heat or cool the power battery before it is allowed to charge. For detailed information on charging performance parameters, please refer to the official website of your purchased GB vehicle.



Internal cell

Model: 18650 (3200MAH/3.7V)
Discharge current: 5C 13A

this QR code is for scan
your warranty information

PRECAUTIONS FOR INTERNAL CELL USE

Before you use our adapter, kindly check inner 18650 cell if its '+' and '-' locate in the correct position. And press the power supply button, to see if the indication lamp if flashing, if the lamp not light, maybe its inner cell with not enough energy, need outer cell charger add its energy or via our adapter mini-USB port to recharging.

when this adapter working on charging a EV, it can obtain energy from charging station, so if you use it frequently so often, it will no need to add energy too often.

If you can't found 18650 cell in local area, you can use a 5V power bank to supply this adapter, and proceed the normal standard charging step.

Since international express is not allowed to carry batteries, our standard products do not have batteries

PLUGGING IN

⚠ CAUTION: Please pay attention to check whether there is any damage or incomplete structure before using the device.

- 1 To open your DC charge port on your GB/T vehicle, Turn off dashboard and place on "P" gear.
- 2 Attach the adapter inlet to the end of the charging station's charge cable by lining up the COMBO 2 with the charge cable and pushing until it snaps into place.

NOTE:

The adapter has "keyed" slots that line up with corresponding tabs on the charge cable.

- 3 Plug the GB/T plug into your GB/T vehicle, and operate COMBO 2 charging station when indicate 'plug in', then plug in Combo 2 plug into COMBO 2 port.

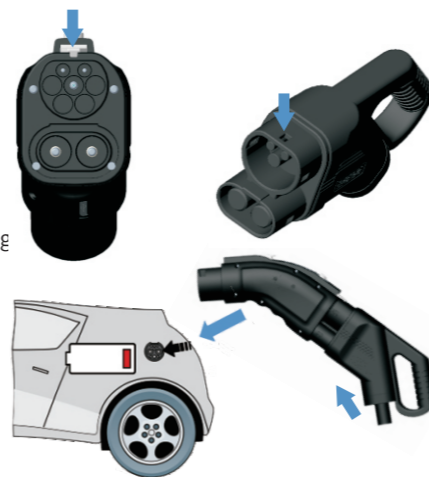
- 4 Follow the instructions on the COMBO 2 charging station to start the charging session.

NOTES:

- Steps 2 and 3 can not be done in reverse order.
- The operation of the COMBO 2 charging station will depend on different charging-station's manufacturer. For details, refer to the COMBO 2 charging station's instructions.

FIRMWARE UPDATE

- ① please make sure your power bank full with energy!
- ② Open the micro USB port cable into the USB port on adapter



COMBO 2 plug insert to
adapter COMBO 2 inlet

- ③ 5V power bank cable plug in supply port, USB flash insert into USB data interface

- ④ after 30~60s, the indication lamp flashing 2~3 times, update successful. remove all the USB cable and supply.

- ⑤ Wait for about 1mins until the lamp flash 2~3 times, firmware update successful. Remark: USB must be in FAT format capacity must less than 16G

Note:

FAT format empty USB disc with 16G or less capacity

OUTPUT troubleshooting DATA

- ① please make sure your power bank full with energy!
- ② plug GB/T connector into car charge port and COMBO 2 plug into adapter's COMBO 2 inlet
- ③ Do all step as "firmware update" waiting at least 60 seconds until the lamp flash 2~3 times.
- ④ copy the output log from USB flash and send email to the reseller and waiting further feedback

Accessories

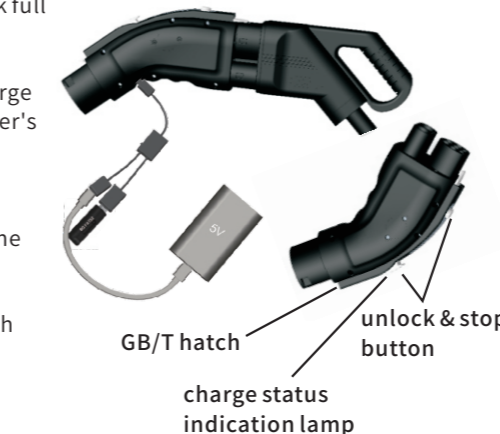
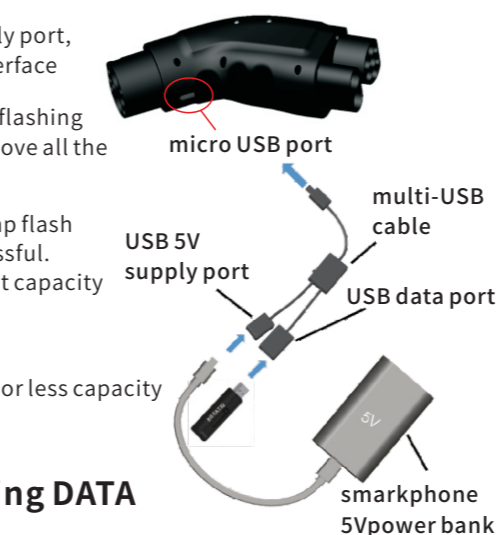
Multi-USB cable(standard)



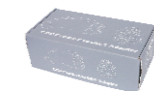
USB flash(optional)



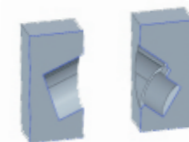
User manual



carton packing box



EPE buffer



standard 18650 cell
(optional)



UNPLUGGING

When charging is complete:

- 1 Press the unlock hatch bottom of the adapter, pull the adapter out of the GB/T DC charge port,

⚠ CAUTION: If you unplug the charging station's cable from the adapter when the adapter is still plugged into the vehicle, make sure the adapter does not fall onto the vehicle and cause damage.

- 2 Push the charge port door closed.
- 3 Unplug the adapter from the charging station and store it in an appropriate location.

STATUS LIGHT

Under normal conditions when the COMBO 2 adapter is receiving power from the charging station, its green LED lights up. During charging, the LED green on.

RESOLVING FAULTS

If your GB/T vehicle fails to charge when using the COMBO 2 adapter, check the display on your GB/T vehicle for information about any error that may have occurred. Always check the status of the charging station.

Although the COMBO 2 adapter is designed to work with all COMBO 2 charging stations, it may be incompatible with some models.

Because continuous improvement is an ongoing goal, and is necessary to ensure compatibility with as many models of COMBO 2 stations as possible, both present and future, We reserves the right to make product modifications at any time. As a result, your adapter may require an occasional firmware update. Firmware updates are performed by USB port.

QUESTIONS?

For information for your region, please contact the seller.

NOTE: When reporting a charging problem, please provide the brand, model, and location of the COMBO 2 charging station and brand of your car.