



RV-LD200B

User Guide for EcozyHome App

ENGLISH



Thank you for choosing our product.
If you have any questions, concerns, or need any help,
please contact us at
support@ecozy.com
or call us via hotline
(443) 991-8777 (UTC 14:00-22:00, Monday to Friday)

Important Tip

Please directly contact us or visit www.ecozy.com for more detailed instructions.

App Downloading and Installation

Option 1:

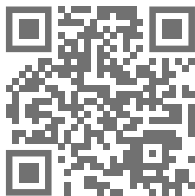
Search for EcozyHome from App Store™/Google Play™, then download and install it on your mobile device.

! Note:

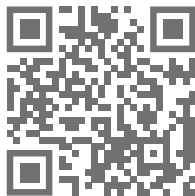
Google Play™ is a trademark of Google Inc., and App Store™ is a trademark of Apple Inc.

Option 2:

Scan the QR codes below to download and install.



For iOS



For Android

App Registration and Login

Launch the App, register an account with your mobile phone number or a valid email address at your first use, then log in.

! Note:

For a successful connection, please allow the App to use your **WLAN & Cellular Data** when running it.

WiFi Connection

IMPORTANT:

For Your Robot Vacuum:

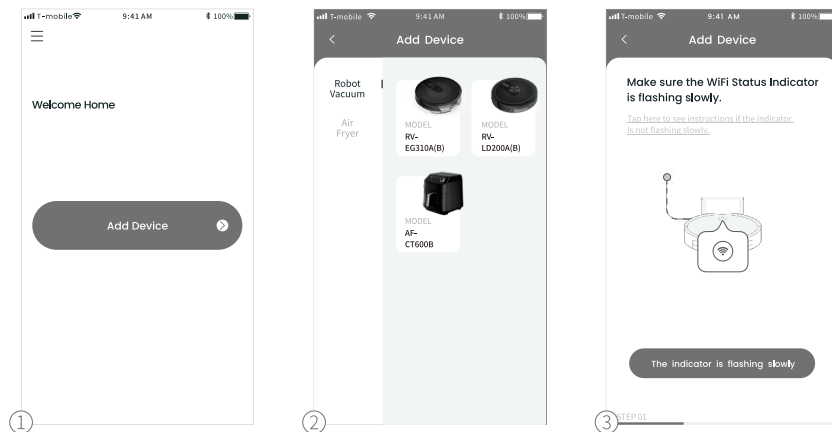
Make sure the robot vacuum has enough power and has been powered on.




For WiFi Network:

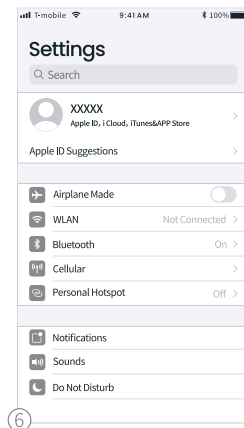
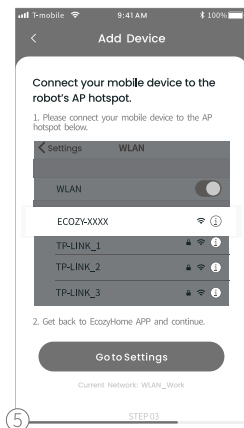
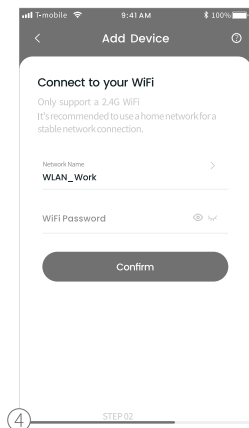
- ① Before connecting, please turn on location service/GPS on your phone and turn on all the permissions required by the App.
- ② Make sure your mobile device is connected to a 2.4GHz WiFi. If your router is a dual-band router, please select the 2.4GHz network.
- ③ Make sure you've entered the correct WiFi name and password when connecting.
- ④ Avoid using an emoji or special characters or symbols in your WiFi name and password.
- ⑤ It's not recommended to use a VPN(Virtual Private Network) or Proxy Server.
- ⑥ Make sure the robot vacuum and your mobile device are close to the router when connecting.

⑦ WiFi Status Indicator

Flash Orange Slowly	Ready for Connection
Solid White	WiFi Connected



- ① Tap Add Device.
- ② Select RV-LD200A(B).
- ③ Simultaneously press and hold  and  on the robot vacuum for 3s until you hear a voice prompt and the WiFi Status Indicator  is flashing orange slowly.



④ Select the same router's WiFi and enter the correct password.

⑤ Tap Go to Settings.

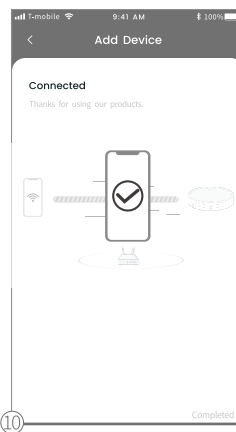
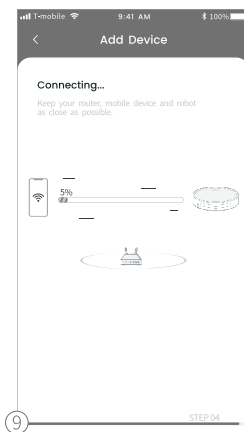
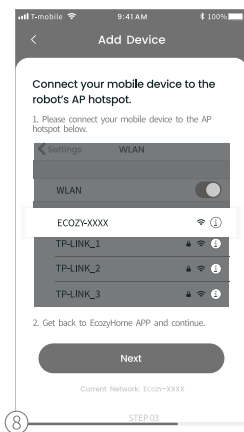
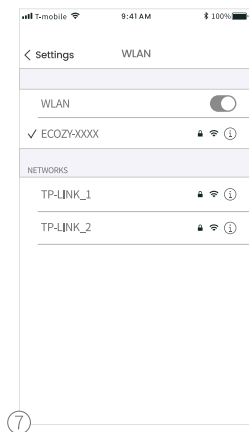
⑥ Tap WLAN.

⑦ Connect to the AP hotspot of the robot vacuum.

⑧ Go back to the EcozyHome App and tap Next.

⑨ Connecting.

⑩ Connected.



Control the Robot Vacuum with Amazon Alexa

Important:

- ① Make sure the robot vacuum has enough power and has been powered on.
- ② You have connected the robot vacuum to the **EcozyHome** App.
- ③ Make sure you've installed the **Alexa** App on your mobile device.
- ④ Make sure the WiFi connection is stable.

Step 1:

Log in to the **Alexa** App with your Amazon account, tap  and then select **Skills & Games**.

Step 2:

Search and select **EcozyHome**, then enable it by tapping **ENABLE TO USE**.

Step 3:

Enter the email address and password for logging in to the **EcozyHome** App, then tap **Authorize** to continue.

Step 4:

Tap **CLOSE** to close the page, then tap **DISCOVER DEVICES** to discover the robot vacuum which has been connected in the **EcozyHome** App.

Step 5:

After the robot vacuum is discovered, please tap **CHOOSE DEVICE** to set up your device.

Step 6:

Tap  and allow the **Alexa** App to access the microphone of your mobile device.

Then you can say the following voice commands to your mobile device, the robot vacuum will respond accordingly.

"Alexa, turn on **the robot**(or the name of your robot vacuum if you have changed the device name)."

"Alexa, turn off **the robot**."

! Note:

If you have an **Echo** device at hand, please follow the steps below to make it available for voice commands.

Step 1:

Log in to your **Echo** device with the same Amazon account for logging into the **Alexa** App.

Step 2:

Tap **Devices** at the bottom, then tap **Echo & Alexa** to show your Echo device. Then you can speak the voice commands mentioned above to your **Echo** device, and the robot vacuum will respond accordingly as well.

Control the Robot Vacuum with Google Assistant

i Important:

- ① Make sure the robot vacuum has enough power and has been powered on.
- ② You have connected the robot vacuum to the **EcozyHome** App.
- ③ Make sure you've installed the **Google Home** App on your mobile device.
- ④ Make sure the WiFi connection is stable.

Step 1:

Launch the **Google Home** App, then follow the in-app instructions to set up your Google account.

Step 2:

Tap **Settings** on the main page, then scroll down to the bottom to tap **Works with Google**.

Step 3:

Tap  on the upper right corner, then search and select **EcozyHome**.

Step 4:

Enter the email address and password for logging in to the **EcozyHome** App.

Step 5:

Tap **Authorize**, it will show you **EcozyHome is linked**.

Step 6:

Follow the instructions to set up the device to finish the settings.

Step 7:

Tap  and allow **Google Home** to access the microphone on your mobile device.

Then you can say the following voice commands to your mobile device, and the robot vacuum will respond accordingly.

"OK Google, turn on **the robot**(or the name of your robot vacuum if you have changed the device name)."

"OK Google, turn off **the robot**."

"OK Google, where is **the robot**."

! Note:

If you have a **Google Home Speaker** at hand, please follow the steps below to make it available for voice commands.

Step 1:

Plug your **Google Home Speaker** into the socket.

Step 2:

Tap **+** on the upper left corner of the main page, then select **Set up device**.

Step 3:

Tap **New device**, then tap **Next** to look for devices.

Step 4:

Follow the instructions of the **Google Home** App to connect your **Google Home Speaker** to WiFi.

Then you can speak the voice commands mentioned above to the speaker, and the robot vacuum will respond accordingly as well.

Troubleshooting Guide

Q1. How many schedules can I set by the App?

- * You can set 7 schedules via the **EcozyHome** App by tapping **Settings > Schedule**. The default cleaning time is 9:00, but you can tap it to change as needed.

Q2. Why does the App show that the robot vacuum is offline?

- * Make sure you have powered on the robot vacuum.
- * Check the network connection of your mobile device.

Q3. Why cannot the robot vacuum connect to WiFi?

- * Make sure you've entered the right password.
- * Keep the robot vacuum, mobile device and your router being as close as possible.
- * Make sure you've selected a 2.4GHz WiFi.

Q4. Why cannot I control the robot vacuum with Alexa?

- * Please check the network connection of your mobile device.
- * Make sure you've connected the the robot vacuum to the **EcozyHome** App.
- * Make sure your robot vacuum has been discovered in the Alexa App.
- * Make sure you start the voice command with "Alexa,"

Q5. Why cannot I control the robot vacuum with Google Assistant?

- * Please check the network connection of your mobile device.
- * Make sure you've connected the the robot vacuum to the **EcozyHome** App.
- * Make sure your robot vacuum has been discovered in the **Google Home** App.
- * Make sure you start the voice command with "OK Google, ..." or "Hey Google, ...".

Q6. How many robot vacuums can I connect to the same account?

- * There is no limitation on the number of robot vacuums.

Q7. How many accounts can I share the robot vacuum with?

- * There is no limitation on the number of accounts.