

User's Guide Iyrel GL3

ver.2102

120V, 60Hz

Safety Instructions

1

IMPORTANT SAFETYGUARDS

When using electrical products, especially when children are present, basic safety precautions should always be followed.

READ ALL INSTRUCTIONS BEFORE USING

- For 120V 60Hz : Power supply must be a 15 Amp GFCI outlet.
- The electrical cord must be connected to a GFCI outlet.
- The GFCI outlet should be 1ft. above the floor.
- Install only in well-ventilated areas to avoid excess humidity.
- Do not install in narrow toilet stalls or in shower stalls.
- Install only where direct contact with water is minimized.
- Do not install near any heat source.
- Avoid using extension cords if possible. Consult with a certified electrician where extension cords are necessary.

DANGER – To reduce the risk of electrocution:

- Do not use while bathing.
- Do not place or store product where it can fall or be pulled into a tub or sink.
- Do not place in or drop into water or other liquid.
- Do not reach for a product that has fallen into water. Unplug immediately.

WARNING – To reduce the risk of burns, electrocution, fire or injury to persons:

- Close supervision is necessary when this product is used by, on, or near children or handicapped individuals.
- Use this product only for its intended use as described in this manual.
- Do not use attachments not recommended by the manufacturer.
- Never operate this product if it has a damaged cord or plug, if it is not working properly, has been dropped or damaged, or dipped into water. Return the product to a service center for examination and repair.
- Keep the cord away from heated surfaces.
- Never drop or insert any object into any opening or hose.
- Do not use outdoors or operate where aerosol (spray) products are being used or where oxygen is being administered.
- Connect this product to a properly grounded outlet only. See grounding instructions.
- Unplug this product before filling. Fill (reservoir) with water only.

GROUNDING INSTRUCTION

DANGER - Improper use of the grounding plug can result in a risk of electric shock.

This product has a three-prong grounding plug, which must be plugged into an outlet that is properly installed and grounded. In the event of an electrical short circuit, grounding reduces the risk of electric shock by providing an escape wire for the electric current. If repair or replacement of the cord or plug is necessary do not connect the grounding wire to either flat blade terminal.

The wire with insulation having an outer surface that is green with or without yellow stripes is the grounding wire. Check with a qualified electrician or service person if the grounding instructions are not completely understood, or if in doubt as to whether the product is properly grounded.

This product is for use on a nominal 120V circuit, and has a grounding plug that looks like the plug illustrated in sketch A in Figure 1.

A temporary adapter, which looks like the adapter illustrated in sketches B and C, may be used to connect this plug to a 2-pole receptacle as shown in sketch B if a properly grounded outlet is not available.

The temporary adapter should be used only until a properly grounded outlet (sketch A) can be installed by a qualified electrician.

The green colored rigid ear, lug, or the like extending from the adapter must be connected to a permanent ground such as a properly grounded outlet box cover. Whenever the adapter is used, it must be held in place by the screw.

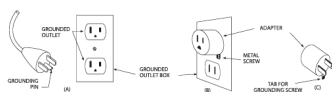


Figure 1.

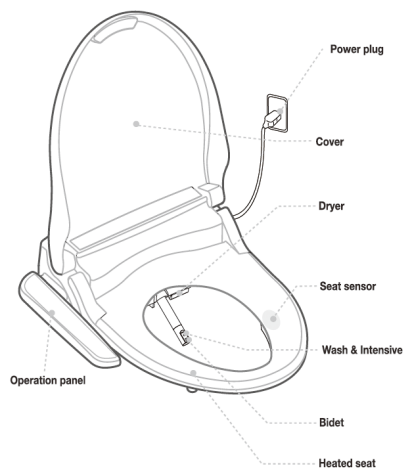
Optional Grounding Instructions



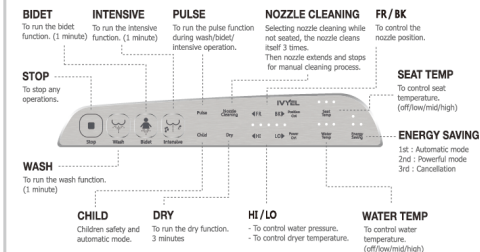
2

Parts & Configuration

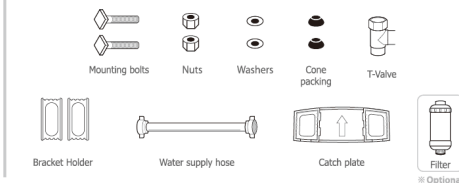
Main Body



Operation panel



Accessories



3

Installation & Trial operation

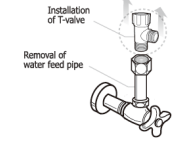
1 Remove the seat from the existing toilet body.

- Release the nuts, and then remove the seat and cover from it.
- Keep the removed seat, cover and nuts in a proper place in case of using them again.
- Turn off the water.



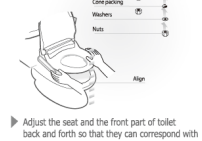
2 Remove the water hose and then install T-valve.

- Remove the water hose and then install T-valve.



3 Fix the bracket onto the toilet first.

- Fix the bracket onto the toilet first.

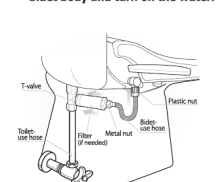


4 Push the main body toward the bracket completely.

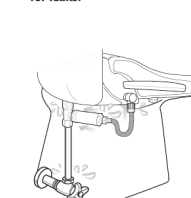
- Push the main body toward the bracket completely.



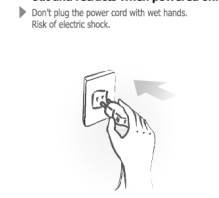
5 After installing the T-valve, connect the bidet-use hose to the bidet body and turn on the water.



6 Turn on the water and check for leaks.



7 Be sure that the nozzle comes out and retracts when powered on.

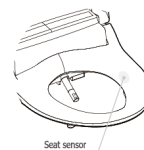


4

How to Use

1 Sit on the toilet seat

- Be sure to sit on the seat sensor. If the sensor is not occupied, all functions will not operate.



2 Wash, Bidet

- Selected function can be used as described.
- When pressing the selected function again, nozzle will move back and forth to wash a wider range.
- Press the button once again to stop Massage function.
- SPECIALIZED water spray in Intensive function helps relieve constipation and fecal stasis.



3 Dry Temperature Control

- Dryer operates for 3 minutes.
- Dryer temperature is adjustable by pressing power ctrl buttons. (5 levels)
- Dryer effect will be improved if you wipe the moisture lightly before operating the drying function.



4 Pulse

- When pressing the Pulse button during the operation of Wash, Bidet and water pressure will repeat high and low for smooth pulsating wash.
- Pulse function will not operate during the operation of Sitz bath.

*See how to use section 5-14 for Sitz bath.

Pulse

5 Nozzle Position Control

- Nozzle position is adjustable. (5 levels)



6 Water Pressure Control

- Water pressure is adjustable. (5 levels)
- If the water or screen filters become blocked, it may cause low water pressure. Regularly check the screen filter.

HI LO Power Ctrl

7 Stop

- All operations will stop.
- When pressing the Stop button for 3 seconds, the unit will be in sleep mode.
- Press Stop, Wash, Bidet to turn on. All settings will be initialized.
- When pressing the Stop button for 5 seconds consecutively, the unit will be turned off and on automatically and initialized. All presets will be deleted.



8 Child Function

- When selecting Child function, settings* will be adjusted for children.
- 1 min Bidet - 30 sec Bidet Oscillating - 30 sec Bidet Pulse - 2 min Dry work consecutively.
- Settings: Extra extended nozzle position, Lower water pressure, Lower seat temperature, Lower water temperature.

Child

User's Guide Iyvel GL3

(UL) (120V, 60Hz)

Thank you for purchasing the unit.
This unit should be installed according to this manual.
Read this manual carefully and install properly.
Do not attempt to service this unit yourself. Doing so could void your warranty.

IVYEL

5

How to Use

9 Seat / Water Temperature Control

- Seat / Water temperature is adjustable. (4 levels) (Off – Low – Middle – High)
- To reduce the chance of low temperature burns, the seat has a seat heater auto adjustment function which turns to low temperature (35°C, 95°F) when seat is occupied for more than 15 minutes consecutively. If the seat is set lower than middle level, the seat remain at off or low level.

• • • •
Seat Temp Water Temp

10 Energy Saving Function

- Automatic energy saving mode
 - This mode will be activated by pressing the Energy Saving button until yellow LED lamp lights on. (Seat and water temperature will be kept at 32°C)
- Powerful energy saving mode
 - This mode will be activated by pressing the Energy Saving button until green LED lamp lights on. (Seat and water heater will be kept off)
- Release of energy saving mode
 - Press the Energy Saving button until LED lamp turns off.
- When the unit is occupied, it adjusts to the preset temperature and it returns to the saving mode when seat is unoccupied.
- If the seat and water temperature are off, they will remain off.

11 Nozzle Cleaning

- When selecting Nozzle Cleaning while not seated, the nozzle cleans itself 3 times. Then nozzle extends and stop for manual cleaning process.
- Clean the nozzle with a brush and press STOP button after completion of manual cleaning.
- NOZZLE CLEANING will not operate if the seat sensor is activated.

•
Nozzle Cleaning

12 Seat Sensor Release

- The seat sensor can be activated and deactivated by pressing Pulse button for 3 seconds.
- If the seat sensor is deactivated, the unit works without occupying the seat and features* cannot be controlled.

* Features
Night light, Silent mode, Nozzle cleaning.

Pulse

13 Automatic tank draining

- To protect water contamination, the water tank will be drained/replaced for 2 minutes if the seat is not used for 48 consecutive hours.
- This feature is deactivated from the factory. To activate this feature, press Stop and Water Temp buttons for 3 seconds.

More than 3 Seconds

• • • •
Stop + Water Temp

14 Sitz Bath

- Wash or Bidet is switched to Wash Sitz Bath or Bidet Sitz Bath if Nozzle Cleaning button is selected during Wash or Bidet operation.
- Water pressure is switched to 1st level regardless of preset water pressure settings and Sitz Bath operates for 5 minutes.
- LED of Nozzle Cleaning turns on during the operation of Sitz Bath.
- Select the Nozzle Cleaning again to switch to normal Wash or Bidet.

•
Nozzle Cleaning

15 Night Light

- Blue LED night light provides enough brightness to see the toilet without turning on the bathroom light.
- Night light can be turned on and off by pressing "+" for 3 seconds while not seated.
- Night light setting cannot be adjusted if seat sensor release feature is activated.

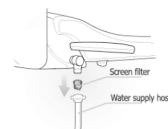
More than 3 Seconds
HI

6

Maintenance & Cleaning

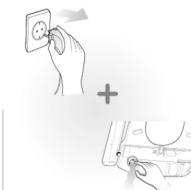
Screen Filter Cleaning

- Close the water valve.
- Disconnect the water supply hose. Take the screen filter out and clean it with a soft brush.
- Return the filter after cleaning and reconnect the water supply hose.
- Open the water valve.



Maintenance during Winter Season

When bidet seat is not used for an extended period of time, unplug and drain the unit.



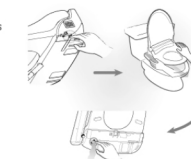
Cleaning the Unit

- Exterior surface of unit is made of plastic material, which may be damaged by scrubbers, chemicals, etc.
- Wipe the surface with a soft damp cloth. Do not spray water directly onto the surface.
- Clean the body after removing the power plug from the outlet. Be sure no water splashes into the power plug or outlet.
- Be careful of not dropping any chemical detergents or toilet cleaner on the water supply hose. Risk of hose damage.



Draining of Remaining Water

- Remove the power plug from the outlet.
- Close the water feed valve.
- Press the lever plate and gently pull to remove the unit from the catch plate.
- Use a coin to open the drain plug.



7

Settings

● : Seat sensor 'off' status ○ : Seat sensor 'on' status ◐ : Regardless of on/off

No	Function	Seat status	Switch operation	Description	Initial status
1	Silent mode	●	"HI" for longer than 3 seconds.	To turn on/off the operating chime sound.	ON
2	Factory default setting	●	"HI" for longer than 5 seconds.	All settings will be initialized.	
3	Sleep mode	●	"HI" for longer than 3 seconds.	The unit will be in sleep mode. Press any of "HI", "HI", "HI", and "HI" turn on.	
4	Seat sensor release	●	"Pulse" for longer than 3 seconds.	Seat sensor feature will be deactivated.	OFF
5	Night light	●	"HI" for longer than 3 seconds.	To on/off the night light.	ON
6	Automatic tank draining	●	"HI" + "HI" for longer than 3 seconds	Automatic tank draining feature will be activated	OFF

- * The unit will work without sitting on the seat if the occupied seat sensor is deactivated. (turned off)
- * If the seat sensor is deactivated, some features cannot be controlled. (Night light on/off, silent mode on/off and nozzle cleaning)
- * Above features are deactivated with 1 buzzer sound and activated with 2 buzzer sounds.

8

Troubleshooting

* Please check the following points before requesting the repair service.

Problem	Check list
Completely out of order	<ul style="list-style-type: none"> Check if the power plug is not connected. Check if the power supply or outlet failure.
Water does not spray out	<ul style="list-style-type: none"> Check if the water supply is turn on. Check if water valve is locked. Check if nozzle is blocked by foreign material. Check if connection hose is bent.
Water pressure is low	<ul style="list-style-type: none"> Check if screen filter is blocked by foreign material. Check if the water pressure is set at too low level.
Water is not warm enough	<ul style="list-style-type: none"> Check if its temperature is set at off or low level, or economy mode.
Seat is not warm enough	<ul style="list-style-type: none"> Check if its temperature is set at off or low level, or economy mode.
LEDs of water high, middle and low level blinking	<ul style="list-style-type: none"> Check the water is supplied properly. Power plug out and in process required after checking.
Water tank is drained intermittently	<ul style="list-style-type: none"> Check if the automatic water draining feature activates.

Self-Diagnosis Table

* Please refer to the following table and inform the exact status when requesting repair service.

No	Self Diagnosis	Indication
1	Water temp sensor is disconnected or not inserted	LEDs of water low + middle level blinking
2	Water temp sensor is short-circuited or overheated	LEDs of water high + middle level blinking
3	Seat temp sensor is disconnected or not inserted	LED of water low level blinking
4	Seat temp sensor is short-circuited or overheated	LED of water high level blinking
5	Check the water is supplied properly.	LEDs of water high, middle and low level blinking Power plug out and in process required after checking.

9

Comparison Chart

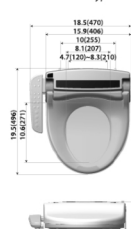
	Features	Iyvel GL3
Wash / Dry features	Wash	●
	Bidet	●
	Child	●
	Dry	●
Convenient / Comfortable features	Normal / Powerful energy saving	●
	Oscillating / Pulsating	●
	Continuous heated water	●
	Heated seat	●
	Soft closing	●
	One touch release	●
Safety features	Nozzle cleaning	●
	Night Light	●
	Seat sensor overriding	●
	Low burn protection	●

• Dimensions inch(mm)

<Elongated type>



<Round type>



10

Specifications

Item	Iyvel GL3
Rated voltage	AC 120V, 60Hz
Max. Power consumption	870W
Power cord length	1.2m
Water feed method	Directly connected to water pipe
Recommended water inlet pressure	99~106 psi
Feed Volume	Wash 0.13~0.21 gal/min
	Bidet 0.13~0.18 gal/min
	Child 0.13~0.16 gal/min
Wash	Pressure control 5 levels
	Temperature control 4 levels (off-low-middle-high)
	Heater capacity 800W
	Safety device Water level sensor, Thermal fuse, Bi-metal, Temperature sensor
Heated seat	Temperature control 4 levels (off-low-middle-high)
	Heater capacity 55W
	Safety device Thermal fuse
Dry	Temperature control Room temp. ~ 122°F
	Heater capacity 250W
	Safety device Thermal fuse, Bi-metal
Feed water temp. tolerance range	37 ~ 95°F (recommended 54 ~ 95°F)
Usage room temp. tolerance range	37 ~ 104°F (recommended 50 ~ 95°F)
Dimension	Elongated 18.5"(470) x 20.8"(528) x 5.7"(145)
	Round 18.5"(470) x 19.5"(496) x 5.7"(145)
Weight	Elongated 10.8 lb (15.7)
	Round 10.4 lb (15.4)

- WARRANTY -

- We hereby guarantee the product as follow in accordance with the regulation of consumer damage compensation.
- In case of failure of the product, please inform the distributor where you purchased the product.
- Product Warranty will be effective for one year from date of purchase

Product Name	Warranty Period
Model Name	One (1) year since the date purchased
Date Purchased	
Serial number	
Customer's Address	Name
	Tel No
Distributor's Address	Name
	Tel No

Regarding Product Warranty Regulation..

- We will repair the product at free of charge in case it was failed under the normal operating condition in accordance with the user guide during the warranty period.
 - Although it is within the warranty period, we will charge the repair service fee etc. (repair + product + travel expense) if it falls under the following cases.
- Voiding warranty**
- Defects occurred from the user's careless handling
 - Defects occurred from the usage with incorrect power voltage (E.g. 220V was used to the 110V product)
 - Defects occurred from the improper repair done by the person other than our service engineer.
 - Defects occurred from Force Majeure (fire, salt, flood, etc.)
 - Failure or damage due to the drop, etc. (user's mis-handling) during the operation after installed
 - Defect occurred from the interior modification at user's discretion
 - In case the life cycle of the part expired

Mail, email or fax the warranty form to:
YOUR LOCAL DEALER FIRST where you bought this appliance

If your dealer is unable to assist you

IVYEL

Head Office & Factory :
12145 Mora Dr #4, Santa Fe Springs CA 90670
www.iyvelshop.com / Email. info@iyvelshop.com