



*en gold.*

*en gold.*

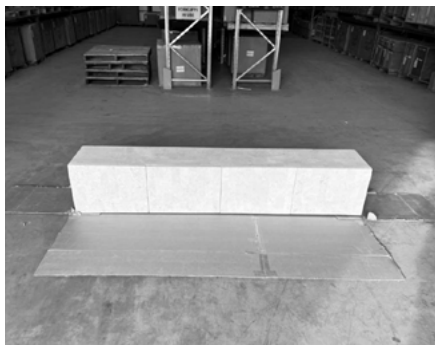
ASSEMBLY INSTRUCTIONS

MIRO COLLECTION

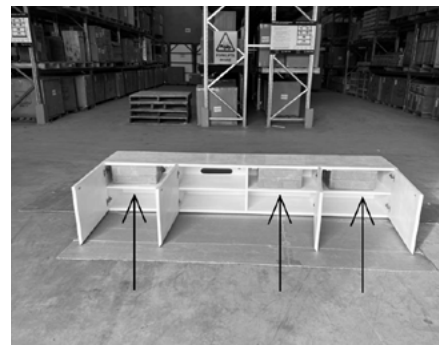




01.



02.



03.



04.



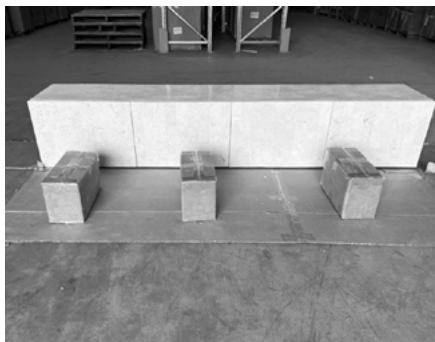
05.



06.



07.



08.



09.



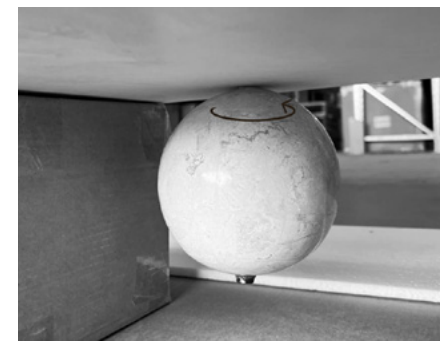
10.



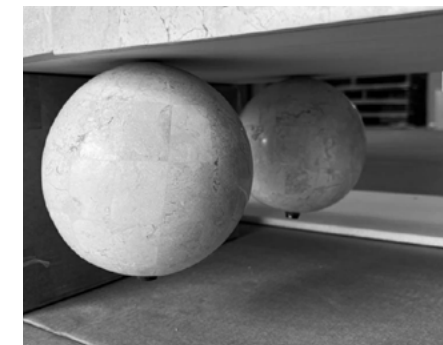
11.



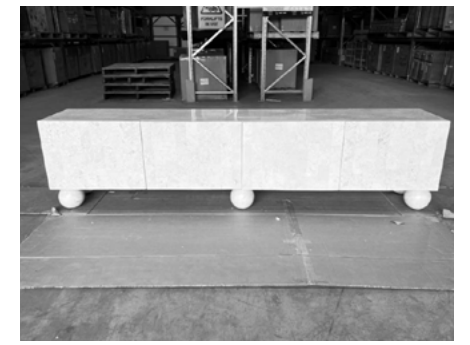
12.



13.



14.



15.



Use the side-to-side adjustment feature on the hinges to move the door right or left to align the door with its neighbour or with the edges of the cabinet box. You can adjust one or both hinges on each door, depending on how much correction it needs. If the door seems to be tilting down to the right, turn the side-to-side screw on the top hinge so the hinge pulls closer to the side of the cabinet box, moving the top of the door to the left. If that doesn't quite do it, adjust the side-to-side screw on the bottom hinge to move the hinge away from the cabinet box, moving the bottom of the door to the right.

**DO NOT drag the piece when moving. Please ensure to lift the piece and move in place.**

If you require further assistance please contact our team at [hello@engold.com.au](mailto:hello@engold.com.au)

These instructions apply to the following pieces



Miro Entertainment Unit, Large



Miro Entertainment Unit, Small



Miro Chest of Drawers



Miro Bedside Table