

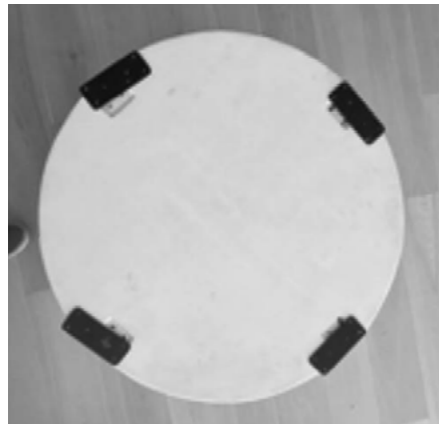


en gold.

en gold.

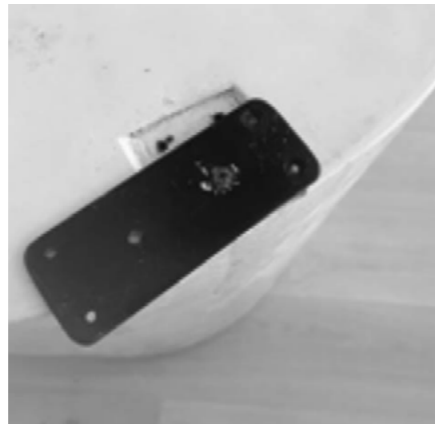
ASSEMBLY INSTRUCTIONS

HERITAGE COLLECTIONS



01.

The item will be packaged with the brackets turned to the side and loosely secured with one screw.



02.

Turn the brackets to face outward, with the shorter side of the bracket sitting within the groove.



03.

Use the provided screws to secure the bracket in place. There are no pre-drilled holes, the screws are to be secured in the surface of the timber base.



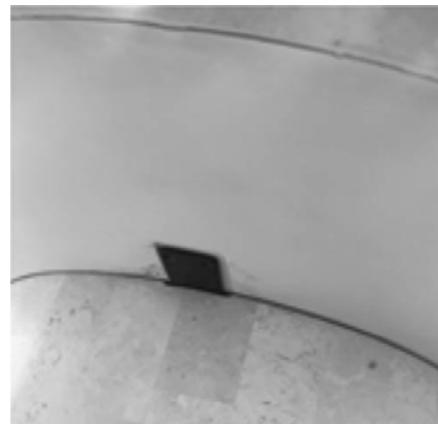
04.

Repeat until all brackets are facing outwards.



05.

Line the tabletop grooves up with the base and outward-facing brackets. The screws are designed to fix in place using a drill.



06.

Ensure all grooves are lined up to the base bracket before fixing them in place.



07.

Secure the tabletop to the base. DO NOT SCREW THE BASE TO THE TABLETOP UPSIDE DOWN.



08.

Repeat until all brackets are secured.



09.

DO NOT move the table top and base together as the screws are not designed to hold the weight of the base. Please ensure to un-screw the table top from the base when moving.

If you require further assistance please contact our team at hello@engold.com

These instructions apply to the following pieces

- Dining Table
- Coffee tables
- Console Tables
- Side Tables