

Wi-Fi Connect Manual AlorAir-R App for iOS App

The screenshots are from the iOS version of our App.

Restoration & Moisture & Ventilation

ALORAIR



- 1 Choose your most used **2.4GHz Wi-Fi** and connect to it, **then disconnected or deleted other Wi-Fi.**
- 2 After the dehumidifier is power on, on the LCD display, click the "MENU" to switch to the Wi-Fi Hotspot sub-interface, then press settings to switch the Wi-Fi hotspot to the "Off" Status.

1. Download and install AlorAir-R from the App Store or Google Play Store.
2. Log in or sign up for a new account.

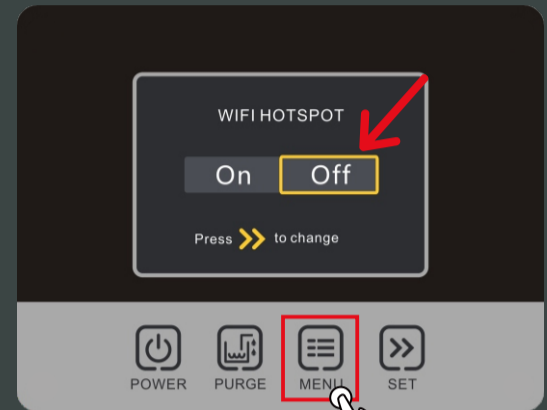
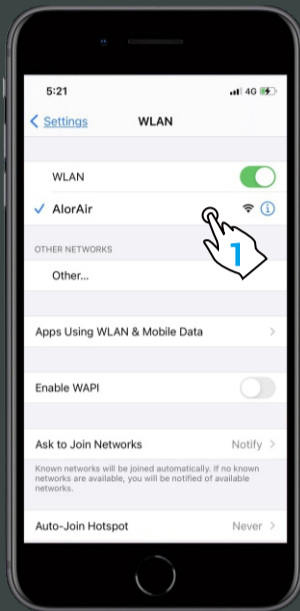
TWO CONNECTION MODES

1. Wi-Fi Connection (Priority use)

Mobile phone wireless connection home router.

2. Direct Connection

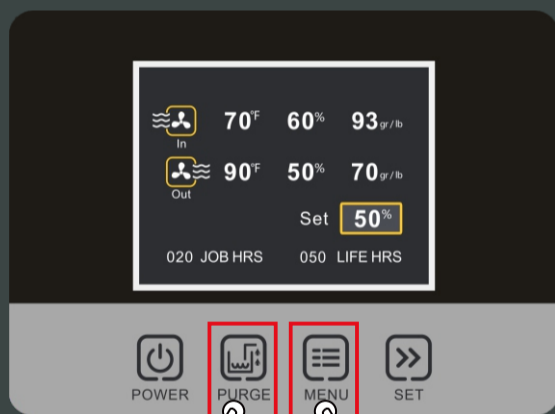
In the absence of any Wi-Fi or 4G Network, the phone directly connects to the dehumidifier (Network starts with HF-LPT230 hotspot).



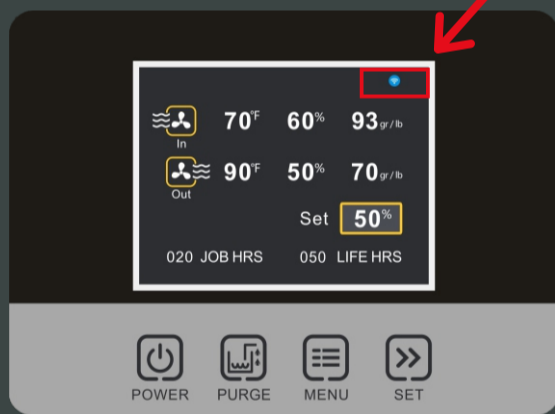
MENU

- 3 After pressing the "POWER" button to return to the main interface of LCD display, hold down the "PURGE" and "MENU" keys at the same time for 3-5s. The interface will give out a prompt sound, then Wi-Fi icon in the upper right corner will keep flashing.

- 4 New users log in for the first time, click "Switch to Wi-Fi settings" to enter the sixth step. Old users can select the "Equipment" to enter the fifth step.



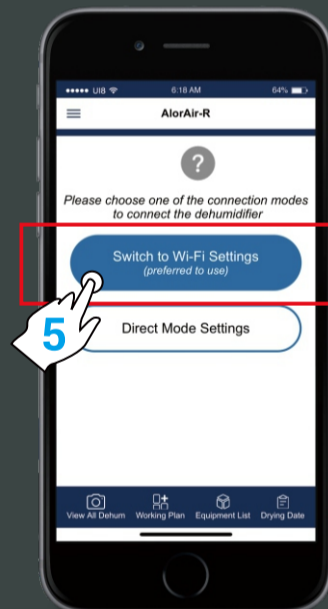
PURGE MENU



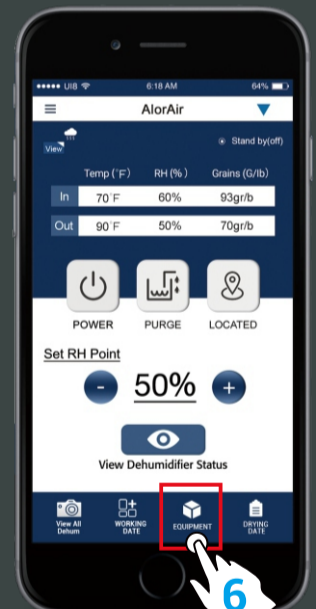
Wi-Fi icon flashing

For New User Enter

For Old User Enter



5



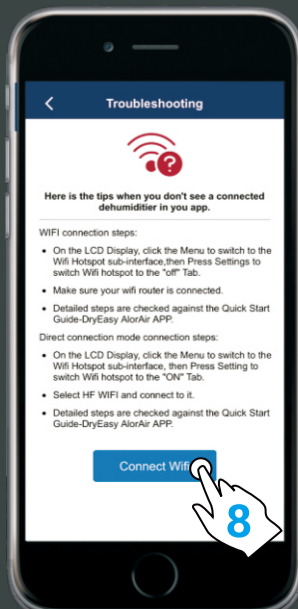
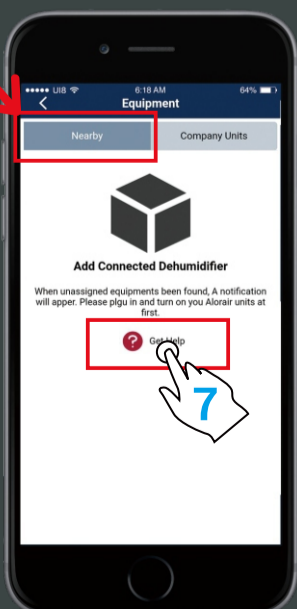
6

Equipment

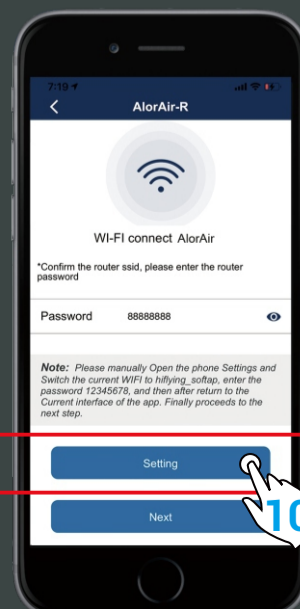
- 5 First, click the "nearby" options tab, then click to "Get Help" button. Second, in the troubleshooting interface, click "connect Wi-Fi" button. Third, after entering the next interface, click "switch to Wi-Fi settings" button.

- 6 Please enter your router password. Then click the "Settings" button Jump to iPhone - WLAN. (Note: wrong password will cause device configuration failure).

Nearby

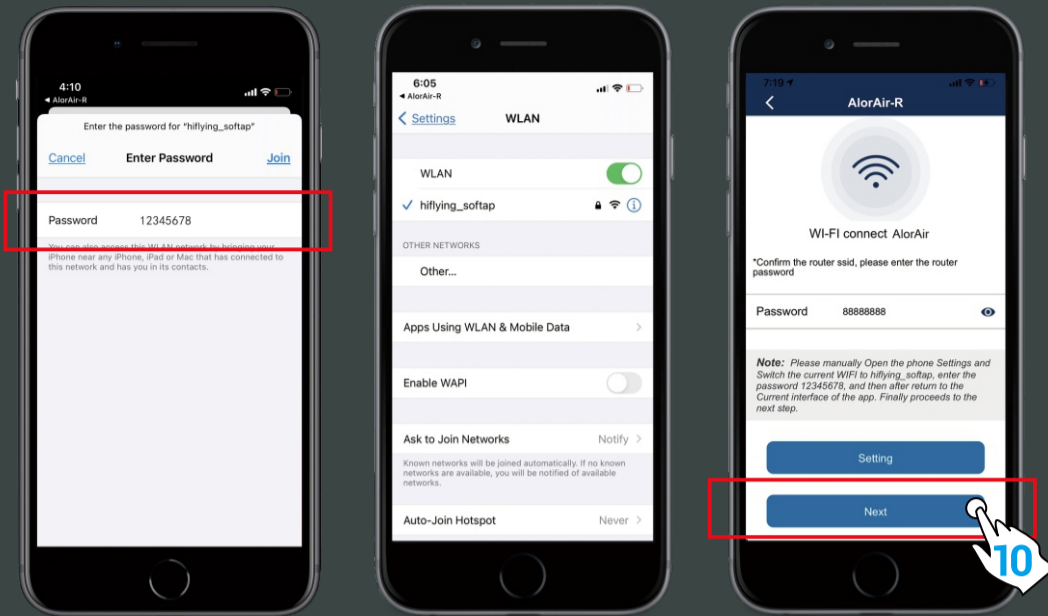


9

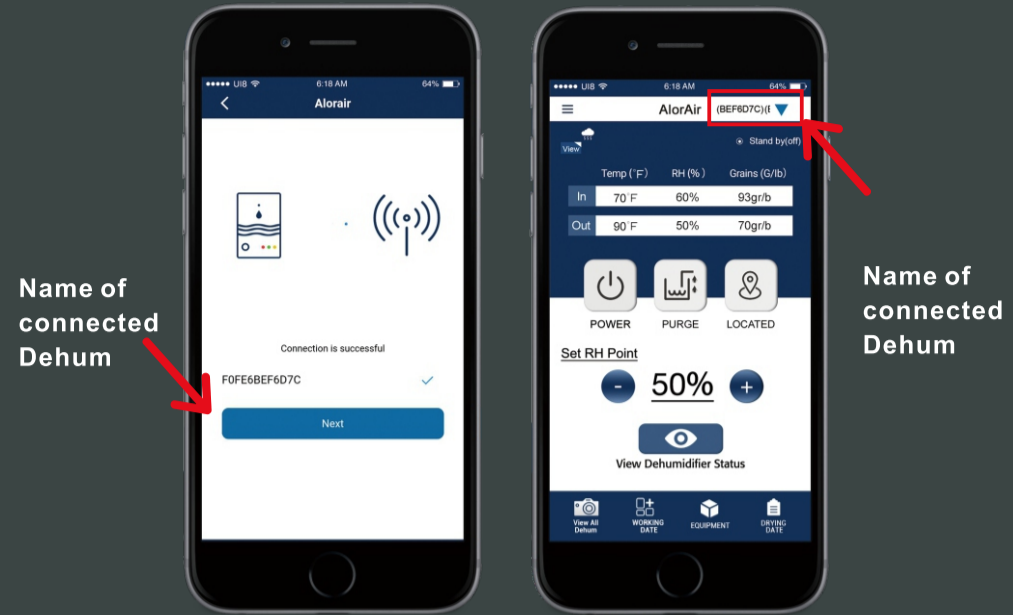


10

7 First, switch the current Wi-Fi to hiflying_softap hotspot, then enter the password 12345678, after the connection is successful, please return to AlorAir-R App. Finally, Please click “Next.” button.



8 When the device mac appears, click “OK” and you will enter your dehum homepage (For example, FOFE6BEF6D7C, the device MAC number is in the upper right corner), at this point, all connection steps are over.

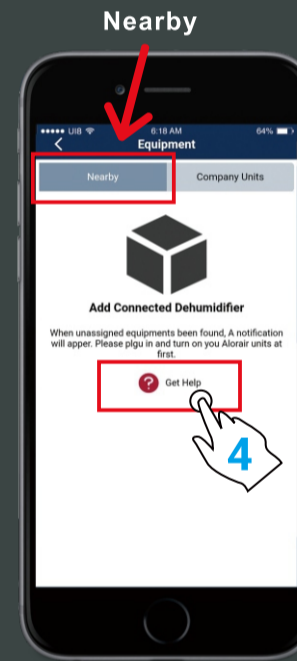
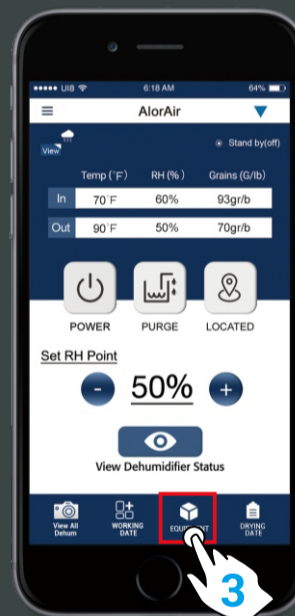
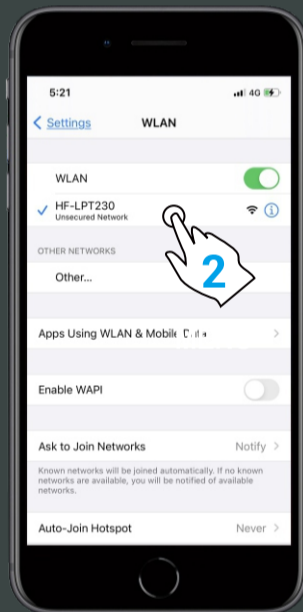


Note: Once the connection is successful, if you want to change the name, please go to the device list to change.

DIRECT CONNECTION STEPS Start Here

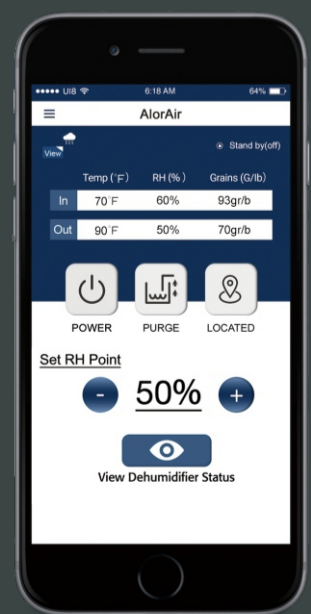
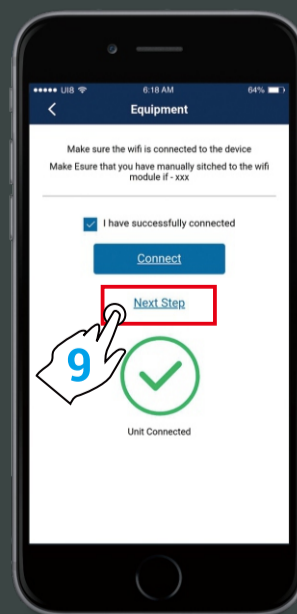
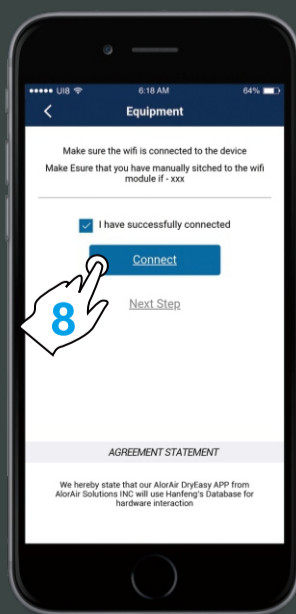
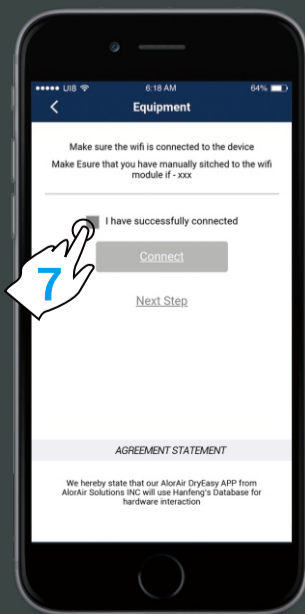
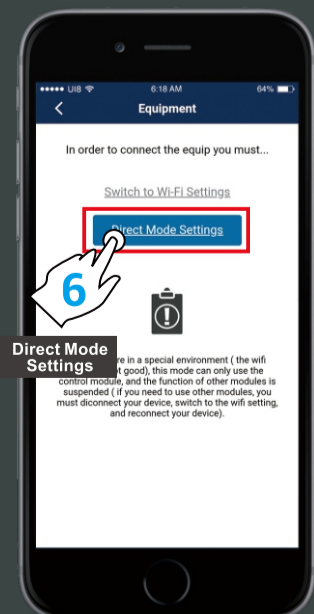
- 1** On the LCD display, first click the “MENU” to switch to the Wi-Fi Hotspot sub-interface, then press “Setting” to switch Wi-Fi hotspot to the “ON” status.
- 2** Select HF-LPT230 Wi-Fi and connect to it on your phone.

3 Follow the steps below.



4 First, select the “Direct Mode Settings”. Second, click I have connected successfully. Third, click the “connect” button.

4 When the “Next Step” button is activated and turns blue. Click it to go to the Direct Mode Home Page.



AlorAir-R App for Android App Wi-Fi Connect Manual

The screenshots are from the Android version of our App.

Restoration & Moisture & Ventilation

ALORAIR



- 1 Choose the **2.4GHz Wi-Fi** (not 5GHz) and connect to it, **then must disconnected or deleted other Wi-Fi**. (Otherwise, the device configuration will fail).
- 2 Click AlorAir-R App icon, enter App.

Download and install AlorAir-R from the App Store or Google Play Store.
Log in or sign up for a new account.

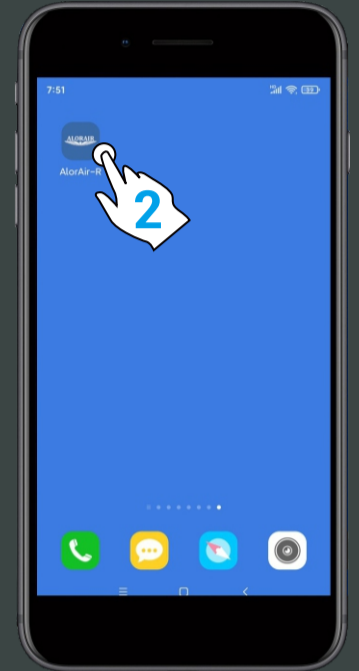
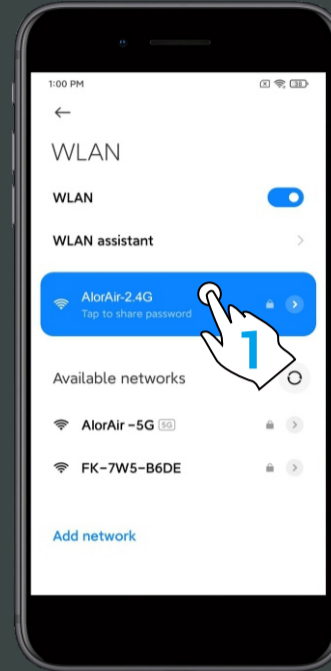
TWO CONNECTION MODES

1. Wi-Fi Connection (Priority use)

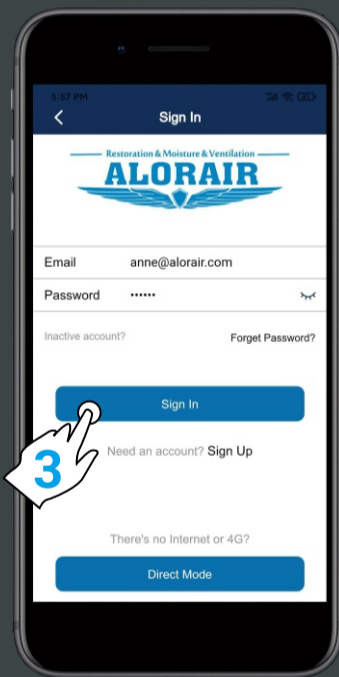
Mobile phone wireless connection home router.

2. Direct Connection

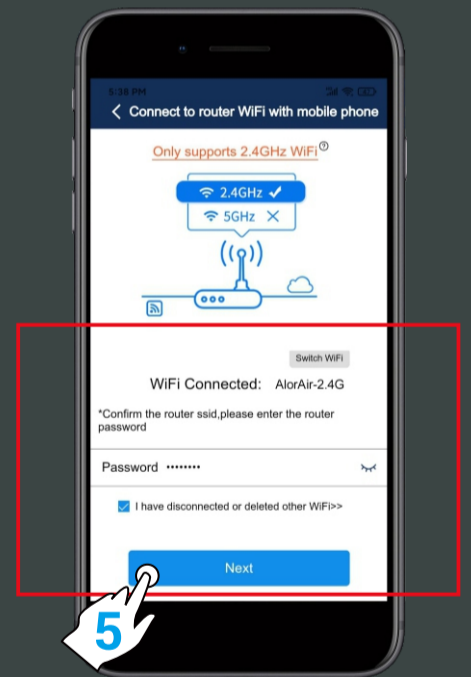
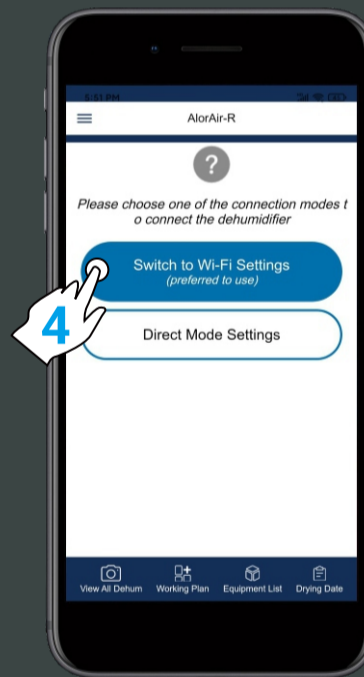
In the absence of any Wi-Fi or 4G Network, the phone directly connects to the dehumidifier. (Network starts with HF-LPT230).



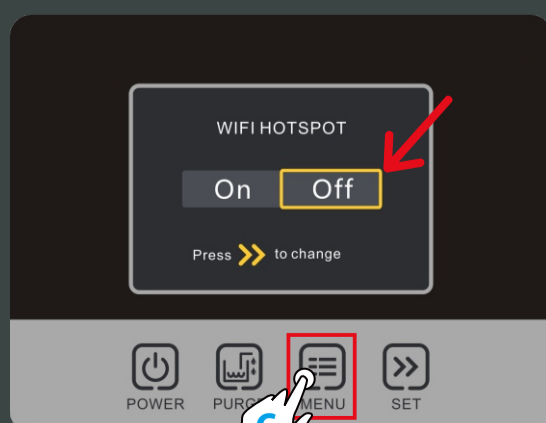
- 3 For new users, you first need to register an account, then activate the account in the email, and finally log in to your account. (Direct connection mode can be used without register an account).



- 4 Choose "Switch to Wi-Fi Settings" button. Confirm route ssid, please enter your router password. (**Check password, otherwise the network configuration will fail**).
- 5 Then "✓" I have disconnected or deleted other Wi-Fi. Finally, click "Next" button.

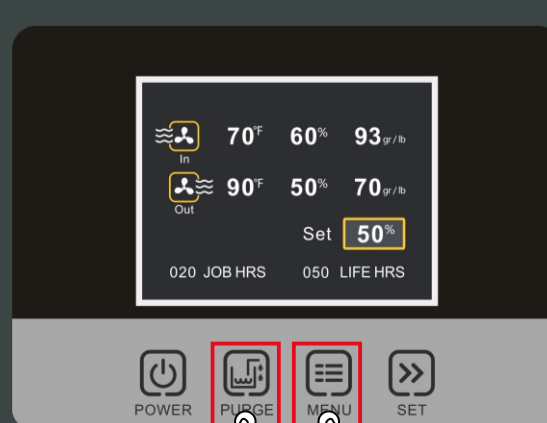


- 6 After the dehumidifier is powered on, on the LCD display, click the "MENU" to switch to the Wi-Fi hotspot sub-interface, then press settings to switch the Wi-Fi hotspot to the "Off" Status.



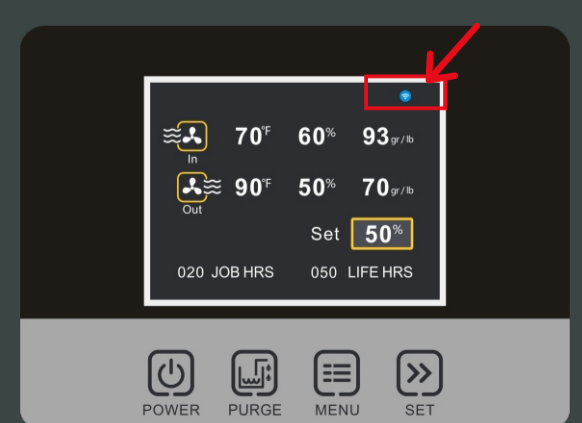
MENU

- 7 After pressing the "POWER" button to return to the main interface of LCD display, hold down the "PURGE" and "MENU" keys at the same time for 3-5s. The interface will give out a prompt sound, then Wi-Fi icon in the upper right corner will keep flashing.



PURGE MENU

- 8 Confirm that the Wi-Fi icon is flashing

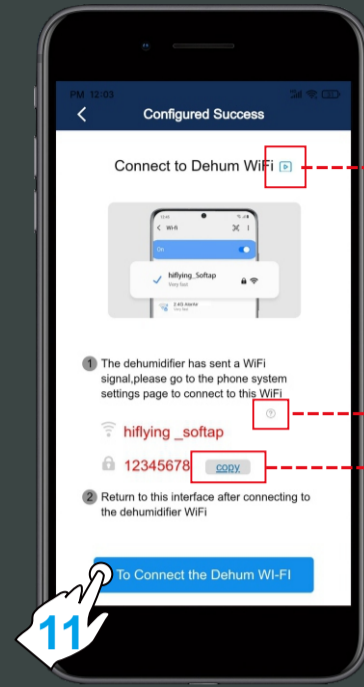


Does the Wi-Fi icon only have sound but no display? Please power off after the 30s and restart the device.

9 Re-confirm that the Hotspots status of the device is "Off", then go back to the Set Dehum-1 interface of the App, and click "Next" button.

10 Confirm again that the Wi-Fi icon of the device is flashing, in the Set Dehum-2 interface, Then "✓" I have completed the above operations, and then click "Next" button.

11 First, copy the password of the hiflying_softap hotspot, then click "connect to Dehum Wi-Fi button" to jump to the system settings page.



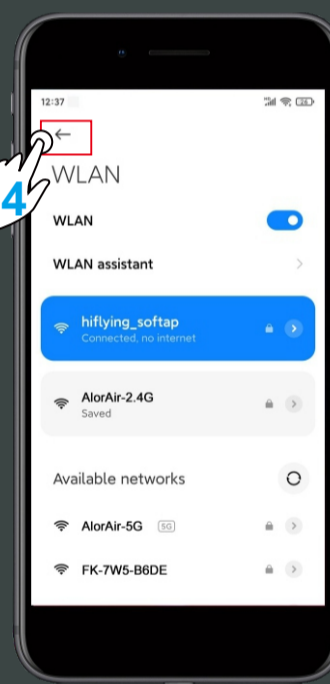
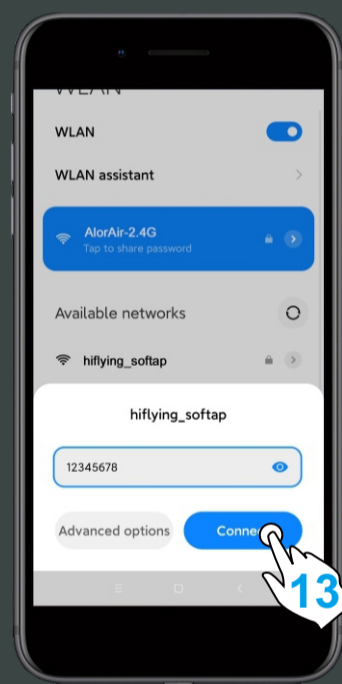
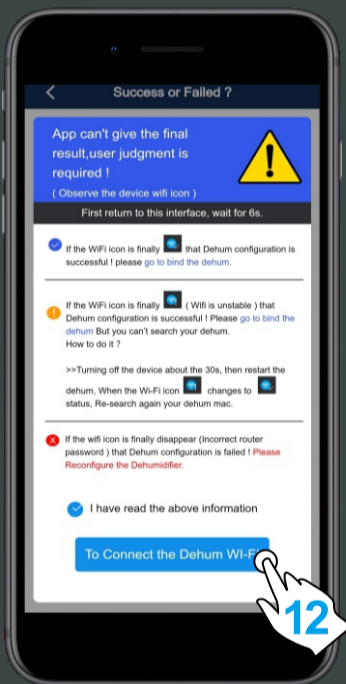
Watch first Gif animation

Tips Copy password

12 The App pop-up box will prompt the user, and the final result needs to be judged by yourself (please understand the content carefully, and take a screenshot to review if necessary).

13 To connect to hiflying_softap, paste the previously copied password or enter the password 12345678. Return to the App after successful connection.

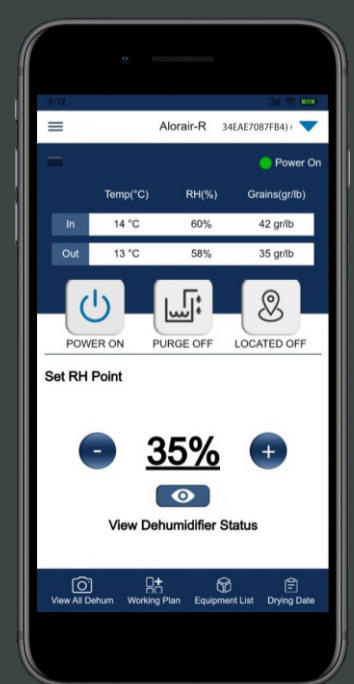
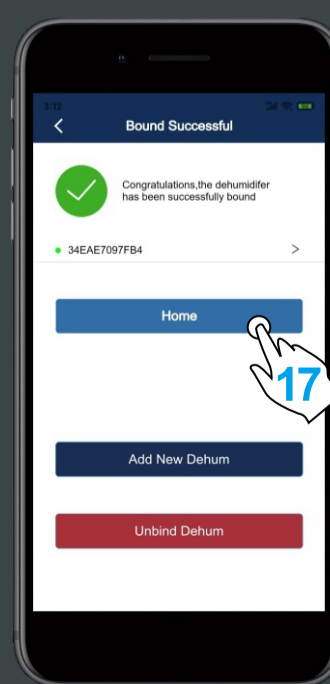
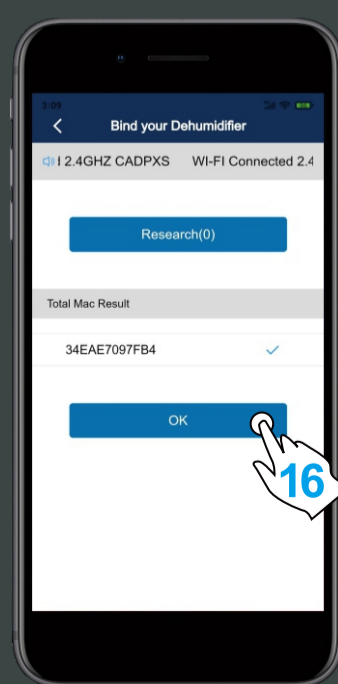
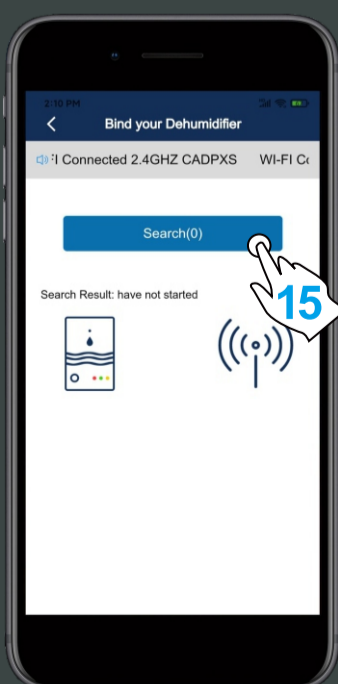
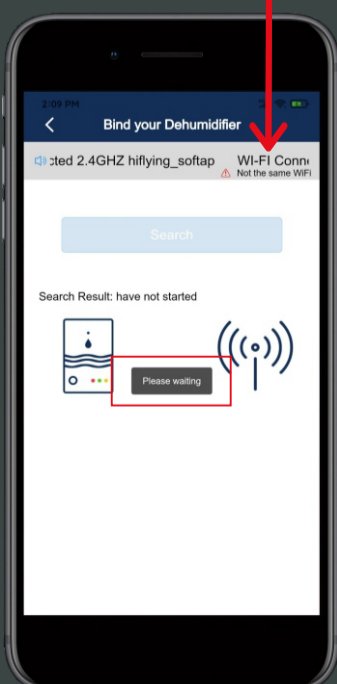
14 The user needs to observe the status of the Wi-Fi icon of the device, make a judgment according to the prompts on the App interface, and decide the next operation direction.



15 When you enter the application binding interface, please wait patiently for 6s, the system will auto switch back to the router's Wi-Fi, when the "search" button icon opens, you can click the search button to search for the dehumidifier.

16 When the device mac appears, click "ok", and then click the "home" button to enter the device homepage. At this point, all the connection steps are over!

Wait for the stability of the device and App



AlorAir-R App for Android App Direct Connect Manual

The screenshots are from the Android version of our App.

Restoration & Moisture & Ventilation

ALORAIR



DIRECT CONNECTION STEPS Start Here

- 1 On the LCD display, click the "MENU" to switch to the Wi-Fi Hotspot sub-interface, then press "Setting" to switch Wi-Fi hotspot to the "ON" Status.
- 2 Then select HF - LPT230 Wi-Fi and connect to it on your phone.

Download and install AlorAir-R from the App Store or Google Play Store.
Log in or sign up for a new account.

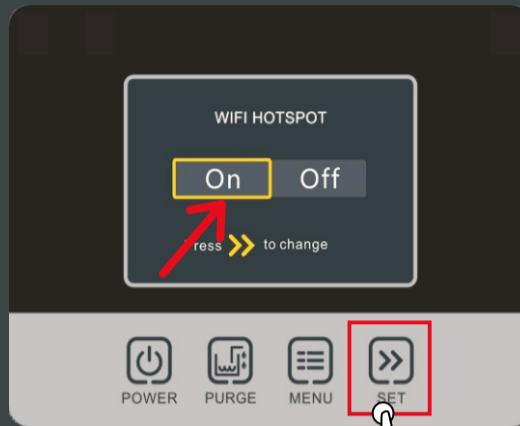
TWO CONNECTION MODES

1. Wi-Fi Connection (Priority use)

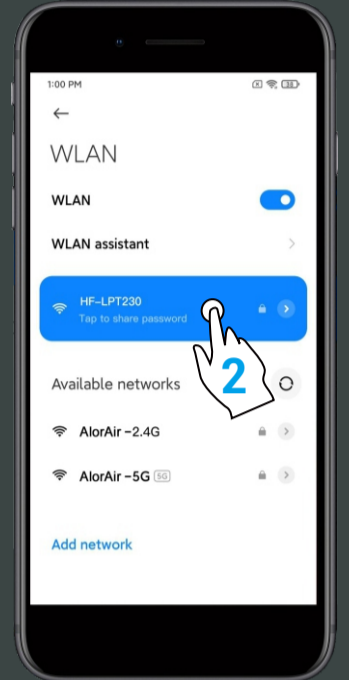
Mobile phone wireless connection home router.

2. Direct Connection

In the absence of any Wi-Fi or 4G Network, the phone directly connects to the dehumidifier (Network starts with HF-LPT230).

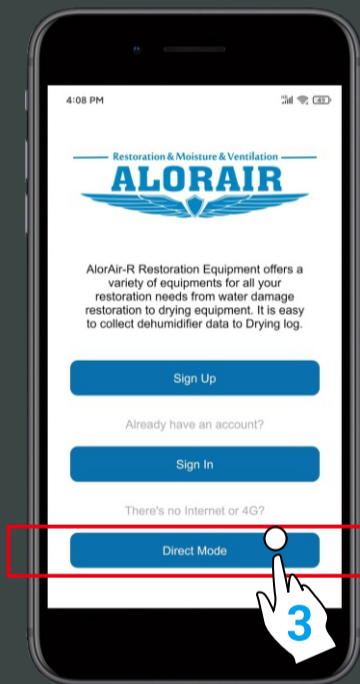


MENU

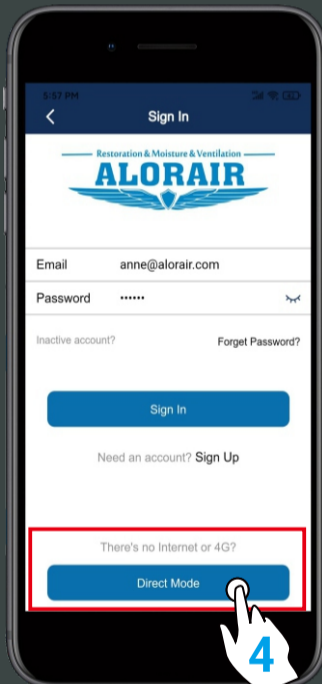


- 3 The following three interfaces can enter the "Direct Mode".

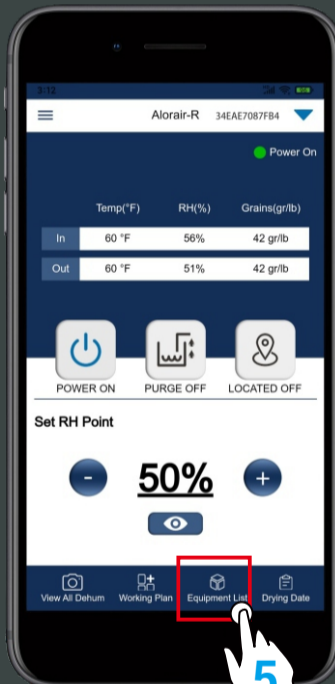
- 4 In the "Equipment-Nearby" sub-interface, click to "Get help" and select "Direct Mode Settings" button to enter the next step.



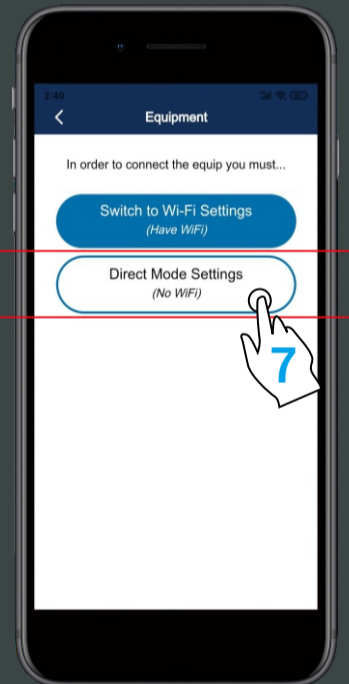
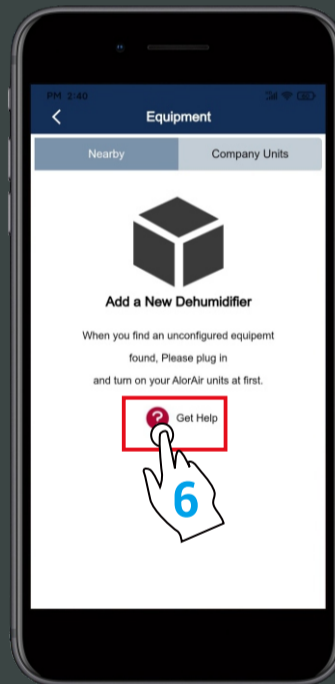
Start page



Login page



Home page



- 5 After making sure to complete the two conditions, click "I have successfully connected to HF-LPT230" Hotspot, then click the "connect" button, when the green hook icon appears, click "Next step" button to enter the Direct connect mode home page.

- 6 The direct connection step has ended. AlorAir recommended that users disconnect or delete other Wi-Fi during use. (In order to avoid automatically switching Wi-Fi in the background, which may cause the direct connection function to become unstable!)

