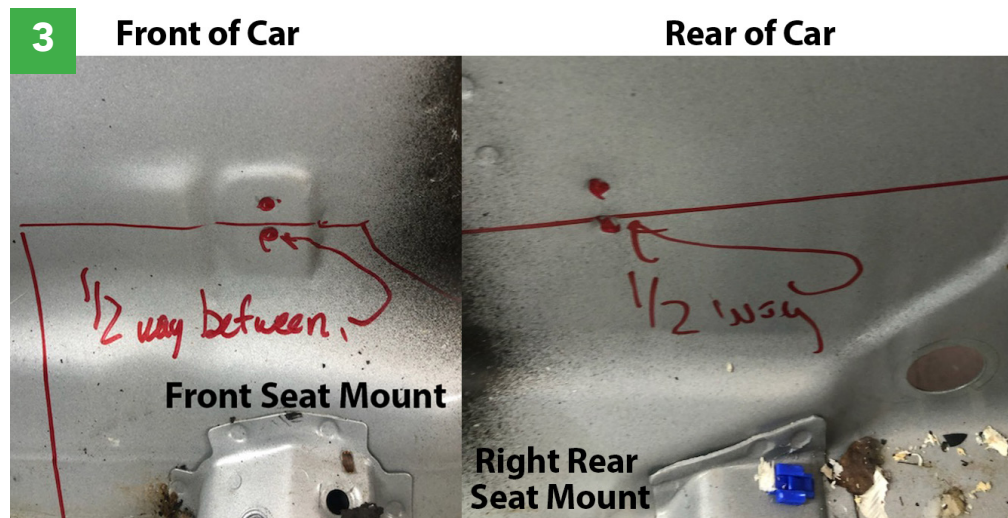
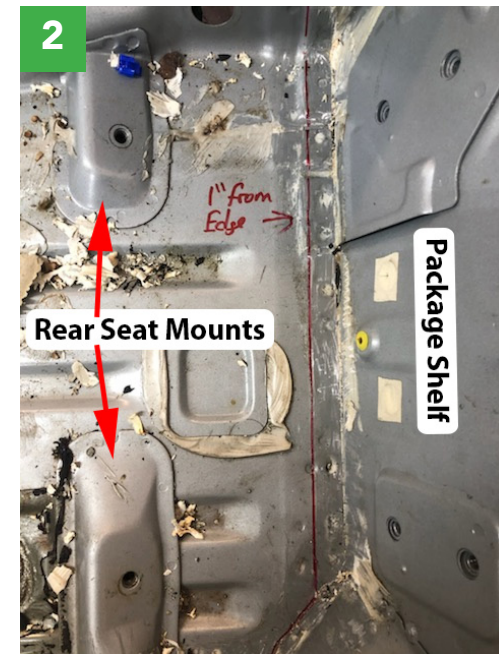
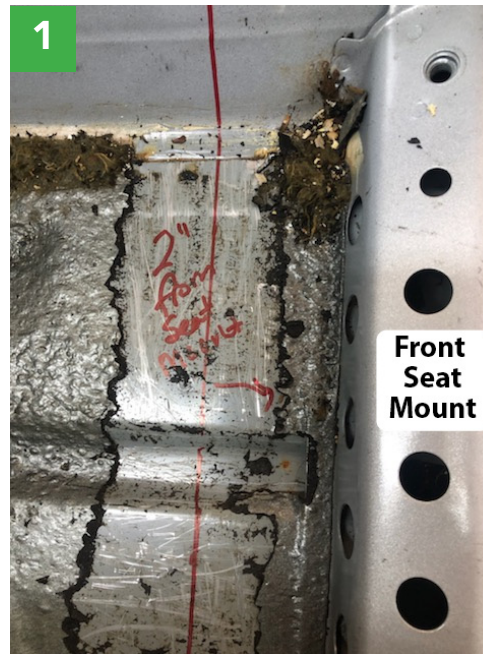
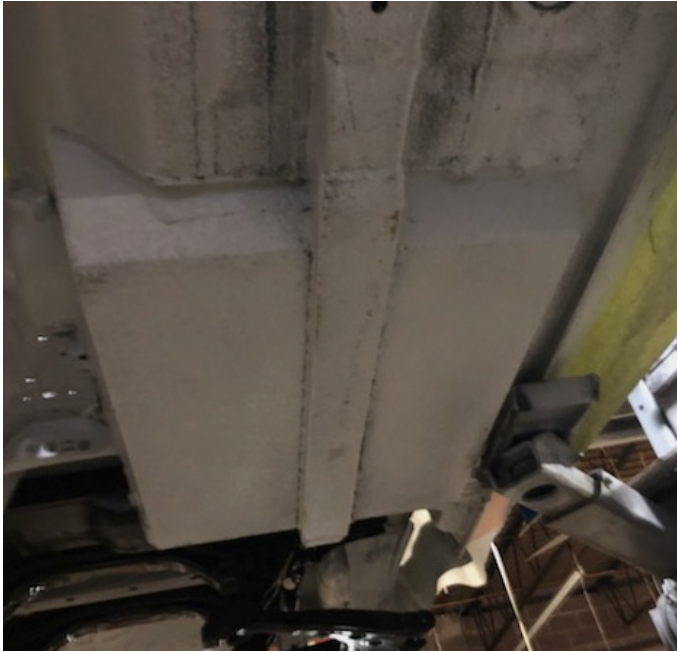


Installation Procedure for Drop Floor

1. Strip your car and remove all sound deadener to clear the way for the installation process.
2. Start by marking the floor at the front of the car. Draw a line 2" on the floor pan on the front side of the factory front seat mounting cross member. Extend that line vertically up the transmission tunnel. (Pic 1)
3. Move to the back of the car and draw a horizontal line 1" in from the rear of the bulkhead. You can use the seam in the rear floor as a guide. Extend that line vertically up the transmission tunnel. At the rocker panel, cut around the 45 degree gusset in the floor. (Pic 2)
4. On the tunnel side, locate the two spots welds that hold the bracket for the factory heat shield. There will be two of these locations, one will be towards the front of the car just above the factory front seat mount cross member. The other one will be towards the rear of the car just above the right rear seat mount. Mark a horizontal line between the two vertical spot welds in the front and in the back. These horizontal lines will intersect the vertical lines in the front and in the rear. (Pic 3)
5. The last cut will be along the rocker panel. Cut right where the floor and rocker meet.
6. After marking and cutting out the floor, you can now install the floor pan. Drop it in from the top and use sheet metal screws or rivets to hold it in place temporarily until you finish welding.
7. The floor stiffening rail will be mounted from underneath the car. It should overlap the original rail in the front and back and be welded to it. Additionally, you should weld it to the floor pan itself.

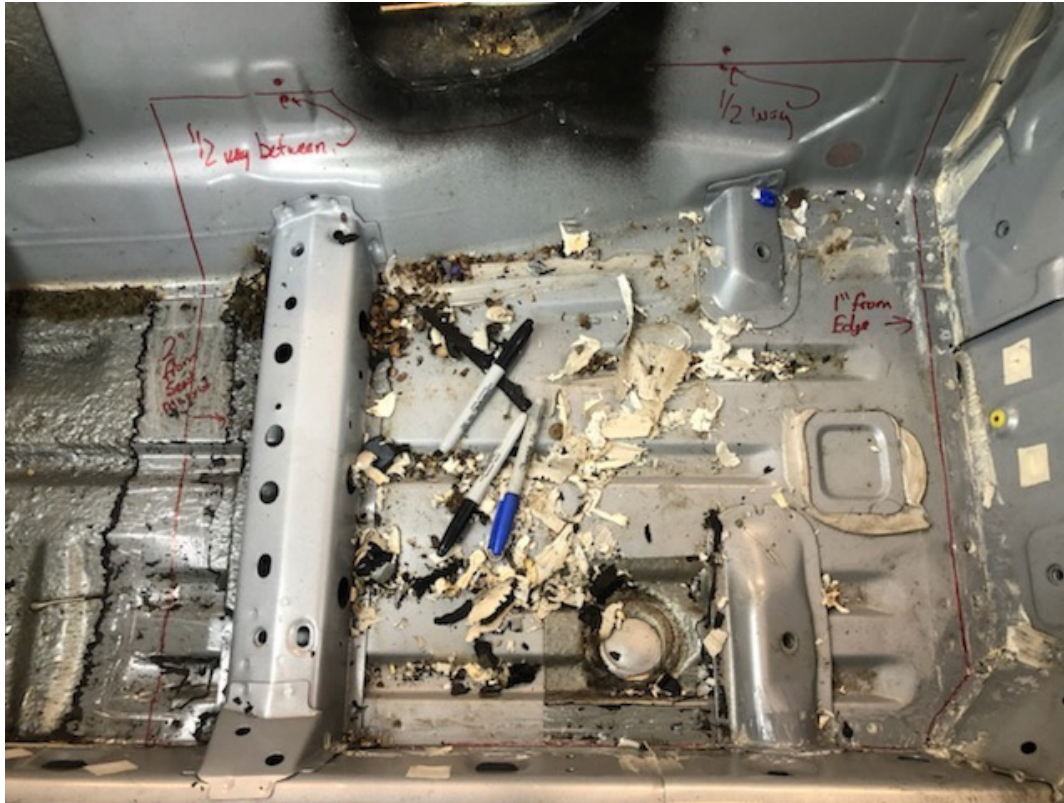


Installation Procedure for Drop Floor



INSTALLATION GUIDE

Installation Procedure for Drop Floor



INSTALLATION GUIDE