



**Marz Designs
presents Aurelia, a
new collection of
contemporary
lighting inspired by
the graceful
movement and
mesmerising
translucence of the
ocean's 'moon
jellyfish'.**

After two-and-a-half years in concept and development, Marz Designs is proud to announce the release of Aurelia. This new lighting collection is defined by its distinctive bell-shaped translucent body, and much like its namesake – the moon jellyfish (*aurelia aurita*) – the delicate Aurelia floats effortlessly, offering an otherworldly ambience to any interior.

While most of Marz Designs' previous collections have been forged from timber and ceramics, Aurelia marks a new direction – the materiality shifting to stone with the hardness of white and jade onyx retaining a feminine sensibility through its soft glow and gentle curves.





AURELIA PENDANT, DOUBLE OFFSET



AURELIA PENDANT, SINGLE



AURELIA PENDANT, DOUBLE

The collection

This celestial new range of residential and commercial lighting combines equal parts contemporary and classic through a chandelier style presence. Designed and assembled in Byron Bay, Aurelia is available in white and jade onyx stone in Surface Sconce, Pendant, Double Pendant, Double Pendant Offset and Wall options.



Collection



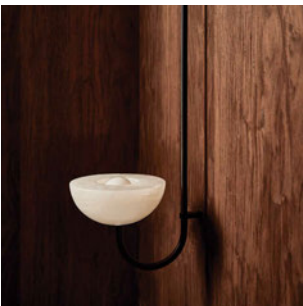
SCONCE



PENDANT DOUBLE, OFFSET



PENDANT DOUBLE



WALL



PENDANT SINGLE

Stone Options

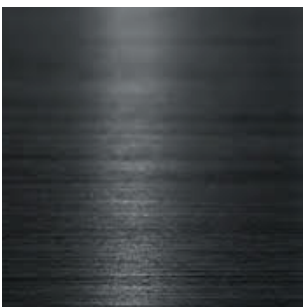


JADE ONYX



WHITE ONYX

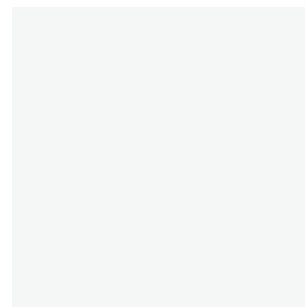
Metal Finish Options



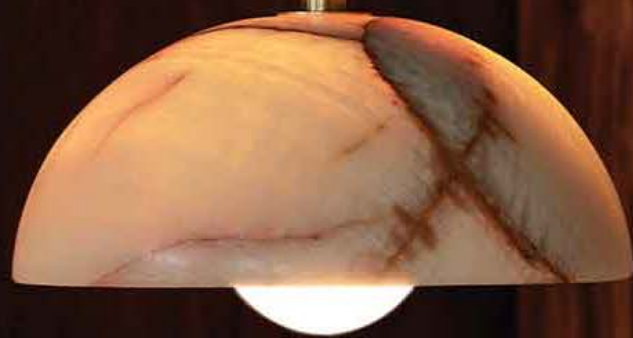
BRUSHED BLACK



BRUSHED BRASS



WHITE SATIN



For further information or imagery please contact:

Marz Designs

E: info@marzdesigns.com

T: +61 (2) 6680 4971

www.marzdesigns.com