

**Aurelia Surface Sconce**



**MARZ DESIGNS**

info@marzdesigns.com  
+61 (02) 6680 4971

3/1 Boronia Place  
Byron Bay NSW 2481

www.marzdesigns.com



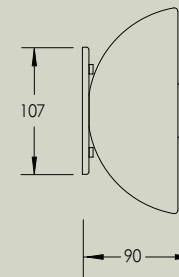
## Aurelia Surface Sconce

Suitable as a wall light or ceiling light in both residential and commercial projects, the Aurelia Surface Sconce is defined by its distinctive bell-shaped translucent body.

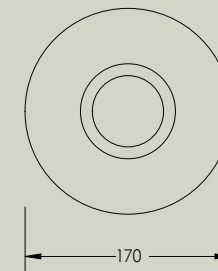
### Details

Size (mm)	170w x 90d x 170h
Glass shade	60mm
Lamp base	G9 push fit
Lamp	220-280V 5W 3000K 370lm LED 100-130V 4.5W 3000K 450lm LED
Voltage	220-280V or 100-130V
Dimmable	Lamp included is compatible with most brand name dimmers
Weight	3.5kg
IP	IP44
Certification	CE UK CA
Note 1	Stone is a natural product and can vary in colour, tone and vein.
Note 2	Heavy item. Reinforcement behind substrate may be required. Please check with installer prior to installation. Suitable fixings required.

Side view



Front view



### Finishes

