

Lune Pendant



MARZ DESIGNS

info@marzdesigns.com
+61 (02) 6680 4971

3/1 Boronia Place
Byron Bay NSW 2481

www.marzdesigns.com



Lune Pendant

The Lune Pendant Light is a classic statement piece for a larger space and is part of the Lune range. The Lune range draws inspiration from the geometries, forms and cycles of the moon.

Details

Size (mm)	195h x 240w x 960d
Glass shade	95mm x 3
Lamp base	C9 push fit
Lamp	220-280V 5W 3000K 370lm LED x 3 100-130V 4.5W 3000K 450lm LED x 3
Voltage	220-280V or 100-130V
Dimmable	Lamp included is compatible with most brand name dimmers
White Weight	Under 3kgs
Brass Weight	Under 8kgs
IP	IP44
Certification	CE UK CA
Note 1	Ceramic pigments are mixed by hand and can vary up to 5% in colour tone and depth

Finishes



Raw
Brushed
Brass



White
Powder
Coat



Sage
Ceramic



Slate
Ceramic



Vanilla
Bean
Ceramic



Clear
Frosted
Glass

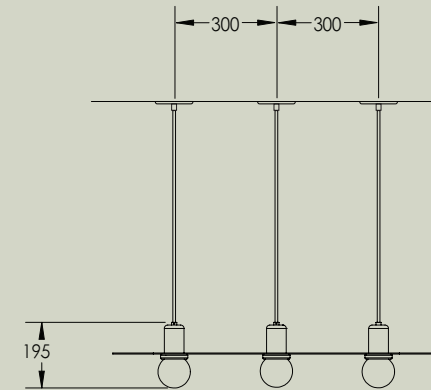


White
Frosted
Glass

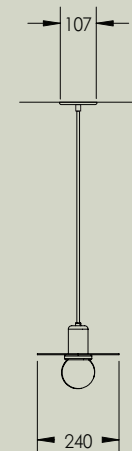


Opal
Glass

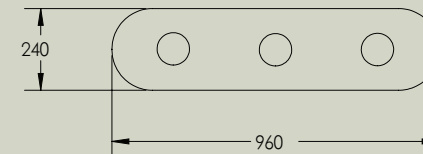
Front view



Side view



Top view





Pendant details

Supplied with 3m of beige cord.



Fabric Cord

Pendant light with fabric flex comes with 3 metres of black fabric cord that can be cut and adjusted to your desired length on-site.

Finishes



Beige
Fabric Cord

