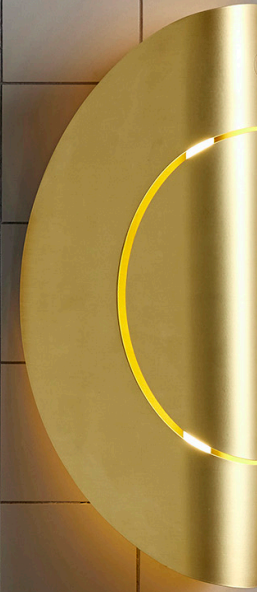


Furl Circle Wall Light



MARZ DESIGNS

info@marzdesigns.com
+61 (02) 6680 4971

3/1 Boronia Place
Byron Bay NSW 2481

www.marzdesigns.com



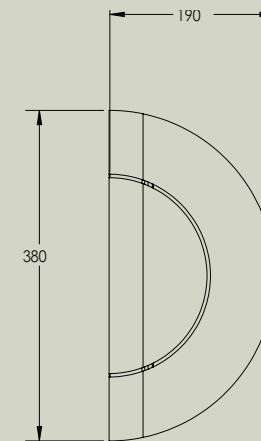
Furl Circle Wall Light

The Furl Circle Wall Light emits a diffused light from the open edges as well as through a laser-cut incision that references the original shape of the metal sheet. The result is a fixture that not only creates an ambient light but is also an eye-catching wall feature that becomes a considered element in any interior or exterior scheme.

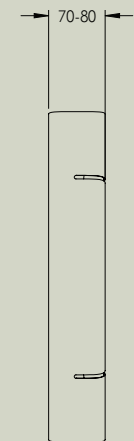
Details

Size (mm)	380h x 190w x 70-80d
Lamp base	LED Tube Strip with heat sink & PVC diffuser
Lamp	7W 3000K 450lm LED Lamp included
Voltage	DC12V
Dimmable	No Dimmable driver available on request
Weight - Aluminium	Under 1kg
Weight - Brass	Under 2kgs
IP	IP67
Certification	 
Note 1	Lights are rolled by hand so dimensions may vary slightly
Note 2	Raw brushed brass will naturally patina over time
Note 3	Lights can be installed in any orientation
Note 4	Please wear gloves during installation

Front view



Side view



Finishes



Raw
Brushed
brass



Brass w/
Clear
Powder
Coat



White
Powder
Coat