

BROOKLYN CANDLE
STUDIO



S/S 2024 WHOLESALE CATALOG



OUR STORY

A note from Tamara Mayne, Founder and Creative Director

Welcome to our world. I launched Brooklyn Candle Studio in 2013 with a mission to create candles with captivating scents, beautiful minimalist design, and the best ingredients. Essentially, everything we love about luxury candles, but at accessible prices.

We use 100% soy wax derived from American-grown soy beans for an eco-friendly, clean burn and lead-free cotton wicks. Our candles are preservative and

petroleum-free, cruelty-free, and 100% vegan. We are an eco-conscious company, opting to use recyclable packaging and shipping material and as little plastic as possible.

We like to think of our wares as full sensory experiences—from the artful minimal packaging to the warm candlelight and delicate aromas that fill the room. So, go ahead, light one up.

XX,

Tamara



BALI

TOP: Orange, Saffron
MIDDLE: Champaca Flower, Elemi
BASE: Patchouli, Incense

MADE IN NEW YORK USA
BY BROOKLYN CANDLE STUDIO

COLLECTION

ESCAPIST

Our Escapist collection transports you to our favorite places in the world, places we've traveled to that have permanent spots in our olfactory memories. We capture the nostalgic aromas of Mediterranean figs and currants of verdant Santorini, the intermingling of sea salt and driftwood on a Maui beach, notes of aged leather and bitters recalling late nights in Brooklyn lingering in cocktail bars with friends. Housed in white textured boxes and screenprinted glass tumblers, this collection will tug at the heartstrings of minimalists around the world.

FULL-SIZED CANDLES:
CASE PACK: 6

ADDITIONAL DETAILS:
BURNS UP TO 70 HOURS
NET WT: 13 OZ / 370 G
MIN ORDER: 1 CASE PACK

VOTIVE GIFT SETS:
CASE PACK: 6

ADDITIONAL DETAILS:
BURNS UP TO 20 HOURS PER CANDLE
NET WT: 3 OZ PER CANDLE
MIN ORDER: 1 CASE PACK

FULL-SIZED CANDLES



BALI ESCAPIST CANDLE
SKU: WHL-FG-C-E-BA

MARRAKECH ESCAPIST CANDLE
SKU: WHL-FG-C-E-MK

TULUM ESCAPIST CANDLE
SKU: WHL-FG-C-E-TL

BROOKLYN ESCAPIST CANDLE*
SKU: WHL-FG-C-E-BK



CATSKILLS ESCAPIST CANDLE*
SKU: WHL-FG-C-E-CS

ITALIA ESCAPIST CANDLE
SKU: WHL-FG-C-E-IT

KYOTO ESCAPIST CANDLE
SKU: WHL-FG-C-E-KY

MAUI ESCAPIST CANDLE*
SKU: WHL-FG-C-E-MA



SANTA FE ESCAPIST CANDLE*
SKU: WHL-FG-C-E-SF

SANTORINI ESCAPIST CANDLE*
SKU: WHL-FG-C-E-SI

SEVILLA ESCAPIST CANDLE
SKU: WHL-FG-C-E-SA

TUILERIES ESCAPIST CANDLE
SKU: WHL-FG-C-E-TU

VOTIVE GIFT SETS



SMOKE + WOODS
BROOKLYN / CATSKILLS / SANTA FE
SKU: WHL-FG-CS-ESV-SW

FRESH + FLORAL
SANTORINI / MAUI / TUILERIES
SKU: WHL-FG-CS-ESV-F

WARM + EARTHY*
SANTORINI / KYOTO / ITALIA
SKU: WHL-FG-CS-ESV-EW



SUNDAY MORNING

TOP: Pear, Bergamot
MIDDLE: Jasmine, Gardenia
BASE: Amber Woods

MADE IN NEW YORK USA
BY BROOKLYN CANDLE STUDIO

COLLECTION

NEW MAXIMALIST

Elevate your sensory experience with our latest unveiling: the Maximalist 3-wick candles, meticulously crafted to encapsulate the essence of our cherished bestselling scents. These 3-wick candles are hand-poured into exquisite clear glass vessels, adding an element of elegance to any space, and housed in textured boxes in our classic minimalistic style.

CASE PACK: 2

ADDITIONAL DETAILS:
BURNS UP TO 100 HOURS
NET WT: 27 OZ / 765 G
MIN ORDER: 1 CASE PACK



**FERN + MOSS MAXIMALIST
3-WICK CANDLE**
SKU: WHL-FG-C-X-FM



**LOVE POTION MAXIMALIST
3-WICK CANDLE**
SKU: WHL-FG-C-X-LP



**PALO SANTO MAXIMALIST
3-WICK CANDLE**
SKU: WHL-FG-C-X-PS



**SANTAL MAXIMALIST
3-WICK CANDLE**
SKU: WHL-FG-C-X-SL



**SANTORINI MAXIMALIST
3-WICK CANDLE**
SKU: WHL-FG-C-X-SI



**SUNDAY MORNING MAXIMALIST
3-WICK CANDLE**
SKU: WHL-FG-C-X-SM



LOVE POTION

TOP: Mandarin
MIDDLE: Lavender
BASE: Jasmine Blossoms

BROOKLYN CANDLE STUDIO
7.6 OZ | 0 222 G

HAWAII RAIN

TOP: Raindrops, Lemon Peel
MIDDLE: Bitter Orange, Coconut Water
BASE: White Woods, River Jasmine

BROOKLYN CANDLE STUDIO
7.6 OZ | 0 222 G

SUNDAY MORNING

TOP: Pear, Bergamot
MIDDLE: Jasmine, Gardenia
BASE: Amber Woods

BROOKLYN CANDLE STUDIO
7.6 OZ | 0 222 G

COLLECTION

MINIMALIST

A hike through Northern California's Fern Canyon; fragrant Montana evergreens in the dead of winter; earthy, meditative notes of fig and rosewood—symphonies of beautiful botanical aromas inspire this collection. Hand-poured into elegant straight sided clear glass jars with modern minimalist labels, these candles complement any interior. Perfect next to a bud vase filled with freshly picked blooms or your prettiest succulent on a mantle, nightstand, or coffee table.

CASE PACK: 6

ADDITIONAL DETAILS:
 BURNS UP TO 50 HOURS
 NET WT: 7.5 OZ / 212 G
 MIN ORDER: 1 CASE PACK



FERN + MOSS*
MINIMALIST CANDLE
 SKU: WHL-FG-C-M-FM



HAWAII RAIN
MINIMALIST CANDLE
 SKU: WHL-FG-C-M-HR



JAPANESE CITRUS
MINIMALIST CANDLE
 SKU: WHL-FG-C-M-JC



LEATHER JACKET
MINIMALIST CANDLE
 SKU: WHL-FG-C-M-LJ



LOVE POTION*
MINIMALIST CANDLE
 SKU: WHL-FG-C-M-LP



MONTANA FOREST*
MINIMALIST CANDLE
 SKU: WHL-FG-C-M-MF



PALO SANTO*
MINIMALIST CANDLE
 SKU: WHL-FG-C-M-PS



SANTAL*
MINIMALIST CANDLE
 SKU: WHL-FG-C-M-SL



SUNDAY MORNING*
MINIMALIST CANDLE
 SKU: WHL-FG-C-M-SM



SWEET FIG
MINIMALIST CANDLE
 SKU: WHL-FG-C-M-SWFG



WOODSMOKE
MINIMALIST CANDLE
 SKU: WHL-FG-C-M-WS



SEASONAL
SEA SALT + SURF
MINIMALIST CANDLE
 SKU: WHL-FG-C-M-SSS



COCO
GARDENIA
BROOKLYN CANDLE
STUDIO

FLOWER
CROWN
BROOKLYN CANDLE
STUDIO

LILAC
HAZE
BROOKLYN CANDLE
STUDIO

DESERT
STARGAZE
BROOKLYN CANDLE
STUDIO

LAVENDER
DAZE
BROOKLYN CANDLE
STUDIO

SPRING CAPSULE COLLECTION

NEW

LILAC HAZE

Dream a little dream of intoxicating florals from here and away. A country house dripping in lilac blossoms, a Balinese beachside retreat surrounded by coconut palms and fragrant gardenia. Delicate dahlias and midnight jasmine, a retreat to the Mojave landscape that smells sweetly of desert orchid and citrus blossoms. A wild bucolic field of Bulgarian lavender ushers you into your calm era. A fragrance for every floral fantasy, housed in chic matte lilac vessels and packaged in luxe white embossed boxes.

CASE PACK: 6

ADDITIONAL DETAILS:
BURNS UP TO 70 HOURS
NET WT: 10 OZ / 283 G
MIN ORDER: 1 CASE PACK

**STARTS SHIPPING MID FEBRUARY*



COCO GARDENIA CANDLE
SKU: WHL-FG-C-LH-CG



DESERT STARGAZE CANDLE
SKU: WHL-FG-C-LH-DS



FLOWER CROWN CANDLE
SKU: WHL-FG-C-LH-FC



LAVENDER DAZE CANDLE
SKU: WHL-FG-C-LH-LD



LILAC HAZE CANDLE
SKU: WHL-FG-C-LH-LH



HERBARIUM
BROOKLYN CANDLE
STUDIO

THAI
BASIL
BROOKLYN CANDLE
STUDIO

GREEN
TOMATO
BROOKLYN CANDLE
STUDIO

SHISO
LEAF
BROOKLYN CANDLE
STUDIO

MATCHA
BROOKLYN CANDLE
STUDIO

SUMMER CAPSULE COLLECTION

NEW

HERBARIUM

Fresh, earthy, vibrant, uplifting. Herbarium is our love letter to the almighty herb which tantalizes the palate and brightens our lives. From wild shiso to tomato leaf, thai basil to wild mint, matcha tea to thyme, these quintessential scents of summer transport us to lush backyard herb gardens, alfresco dinner parties, and matcha mornings. They energize, uplift, and induce relaxation. Housed in chic chartreuse vessels and packaged in luxe white embossed boxes, like summer served up on a silver platter.

CASE PACK: 6

ADDITIONAL DETAILS:
BURNS UP TO 70 HOURS
NET WT: 10 OZ / 283 G
MIN ORDER: 1 CASE PACK

**STARTS SHIPPING MID APRIL*



GREEN TOMATO CANDLE
SKU: WHL-FG-C-HE-GT



HERBARIUM CANDLE
SKU: WHL-FG-C-HE-HE



MATCHA CANDLE
SKU: WHL-FG-C-HE-MC



SHISO LEAF CANDLE
SKU: WHL-FG-C-HE-SH



THAI BASIL CANDLE
SKU: WHL-FG-C-HE-TB

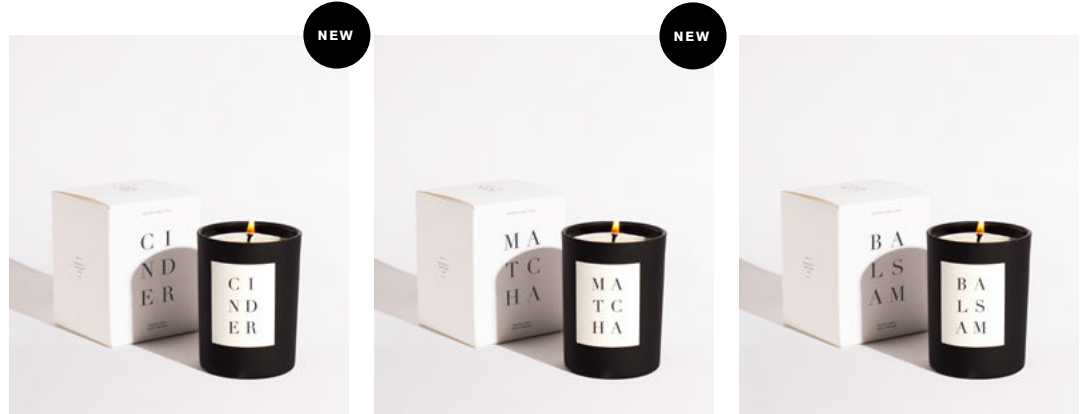
COLLECTION

NOIR

Botanicals take center stage in this luxurious collection inspired by nature's bounty. Hinoki and Santal feature woody, resinous notes while Neroli is a light citrus, energizing and fresh and slightly sweet. Hand-poured in chic black matte glass vessels and packaged in textured embossed boxes, these candles glow gracefully and look beautiful in all interiors.

CASE PACK: 6

ADDITIONAL DETAILS:
BURNS UP TO 70 HOURS
NET WT: 10 OZ / 283 GR
MIN ORDER: 1 CASE PACK



CINDER NOIR CANDLE
SKU: WHL-FG-C-NO-CD

MATCHA NOIR CANDLE
SKU: WHL-FG-C-NO-MC

BALSAM NOIR CANDLE
SKU: WHL-FG-C-NO-BA



CASSIS NOIR CANDLE
SKU: WHL-FG-C-NO-CA



HINOKI NOIR CANDLE
SKU: WHL-FG-C-NO-HI



NEROLI NOIR CANDLE*
SKU: WHL-FG-C-NO-NE



SANTAL NOIR CANDLE*
SKU: WHL-FG-C-NO-SL



LIMITED EDITION

LOVE POTION RED

Exotic notes of jasmine blossoms, calming lavender, and bright mandarin—an olfactory experience reminiscent of a freshly picked bouquet of wildflowers. Housed in a cocktail tumbler with a cream textured minimalist label. Packaged in a textured box inspired by vintage graphic posters.

10% of the proceeds of our Love Potion candle are donated to Harboring Hearts, a 501(c)(3) public charity dedicated to providing emergency housing, transportation, food and other critical resources to transplant and cardiac surgery patients and their families.

CASE PACK: 6

ADDITIONAL DETAILS:
BURNS UP TO 50 HOURS
NET WT: 7.5 OZ / 213 G
MIN ORDER: 1 CASE PACK



LOVE POTION LIMITED EDITION BOXED CANDLE

SKU: WHL-FG-C-LE-LP-RED

*Available while supplies last



MAUI

TOP: Bergamot
MIDDLE: Ylang Ylang, Sea Salt
BASE: Sea Moss, Driftwood

BROOKLYN CANDLE STUDIO
REED DIFFUSER

COLLECTION

REED DIFFUSERS

After over a year of product development, design, testing, and production, we can finally introduce a flame-free alternative to our bestselling fragrances. Enter: Room Perfume. Packaged in a chic off-white textured rigid tube in a custom glass bottle that arrives with a wooden cork (no extra plastic bottles here!), rattan reeds, and a phthalate-free, DPG-Free formula for 4-5 months of delightful diffused fragrance. Perfect for powder rooms, home offices, and any space that needs a little olfactive je ne sais quoi.

CASE PACK: 6

ADDITIONAL DETAILS:
LASTS FOR APPROX. 4-5 MONTHS
VOLUME: 4.4 OZ / 130 ML
MIN ORDER: 1 CASE PACK



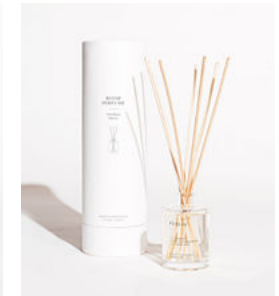
**BROOKLYN
REED DIFFUSER**
SKU: WHL-FG-RD-BK



**CATSKILLS
REED DIFFUSER**
SKU: WHL-FG-RD-CS



**FERN + MOSS
REED DIFFUSER**
SKU: WHL-FG-RD-FM



**ITALIA
REED DIFFUSER**
SKU: WHL-FG-RD-IT



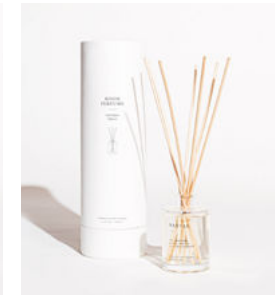
**LOVE POTION
REED DIFFUSER**
SKU: WHL-FG-RD-LP



**MAUI
REED DIFFUSER**
SKU: WHL-FG-RD-MA



**PALO SANTO
REED DIFFUSER**
SKU: WHL-FG-RD-PS



**SANTAL
REED DIFFUSER**
SKU: WHL-FG-RD-SL



**SANTORINI
REED DIFFUSER**
SKU: WHL-FG-RD-SI



**SUNDAY MORNING
REED DIFFUSER**
SKU: WHL-FG-RD-SM



SUNDAY MORNING
TOP: Pear, Bergamot
MIDDLE: Jasmine, Gardenia
BASE: Amber Woods
BROOKLYN CANDLE STUDIO
ROOM MIST - PARFUM D'INTERIEUR
3.4 FL. OZ. - 100 ML

LOVE POTION
TOP: Mandarin
MIDDLE: Lavender
BASE: Jasmine Blossoms
BROOKLYN CANDLE STUDIO
ROOM MIST - PARFUM D'INTERIEUR
3.4 FL. OZ. - 100 ML

FERN + MOSS
TOP: Sage, Lavender
MIDDLE: Spruce, Pine
BASE: Oakmoss
BROOKLYN CANDLE STUDIO
ROOM MIST - PARFUM D'INTERIEUR
3.4 FL. OZ. - 100 ML



COLLECTION

ROOM MISTS

Meet luxe room mists in our beloved bestselling scents in fresh packaging featuring a sexy tall glass bottle with a plastic-free aluminum pump presented in an off-white textured box. Refreshing and body-safe, our room mists are infused with essential oils, paraben-free, sulfate-free, and phthalate-free. What we love about our mists is how chic they look on a bathroom shelf and how we can bask in our favorite fragrances all day by spritzing it on our clothing and bed linens.

CASE PACK: 6

ADDITIONAL DETAILS:
VOLUME: 3.4 OZ / 100 ML (TSA-FRIENDLY)
MIN ORDER: 1 CASE PACK



FERN + MOSS ROOM MIST
SKU: WHL-FG-RS-FM



LOVE POTION ROOM MIST
SKU: WHL-FG-RS-LP



PALO SANTO ROOM MIST
SKU: WHL-FG-RS-PS



SANTAL ROOM MIST
SKU: WHL-FG-RS-SL



SANTORINI ROOM MIST
SKU: WHL-FG-RS-SI



SUNDAY MORNING ROOM MIST
SKU: WHL-FG-RS-SM

COLLECTION

GOLD TRAVEL CANDLES

These luxe brushed gold travel-friendly mini versions of our popular Minimalist Collection are perfect for jetsetting around the globe. Instantly cozyfy any hotel room with your favorite scent and the warm glow of candlelight. Or scatter them throughout your home to give each room a different scent personality. These work best in small spaces: bathrooms, offices, foyers, and, of course, New York apartments.

CASE PACK: 5

ADDITIONAL DETAILS:

BURNS UP TO 30 HOURS

NET WT: 4 OZ / 150 G

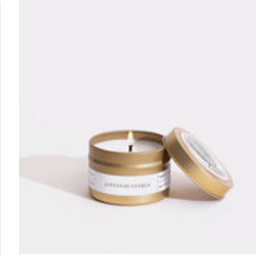
MIN ORDER: 1 CASE PACK



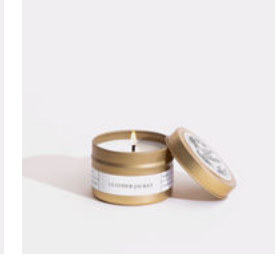
FERN + MOSS*
GOLD TRAVEL CANDLE
SKU: WHL-FG-C-T-FM



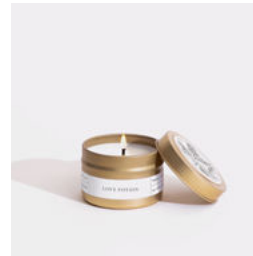
HAWAII RAIN
GOLD TRAVEL CANDLE
SKU: WHL-FG-C-T-HR



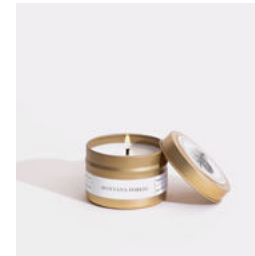
JAPANESE CITRUS
GOLD TRAVEL CANDLE
SKU: WHL-FG-C-T-JC



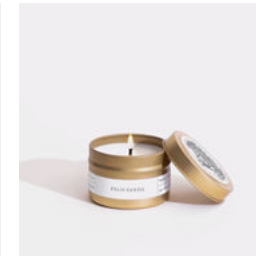
LEATHER JACKET
GOLD TRAVEL CANDLE
SKU: WHL-FG-C-T-LJ



LOVE POTION*
GOLD TRAVEL CANDLE
SKU: WHL-FG-C-T-LP



MONTANA FOREST
GOLD TRAVEL CANDLE
SKU: WHL-FG-C-T-MF



PALO SANTO
GOLD TRAVEL CANDLE
SKU: WHL-FG-C-T-PS



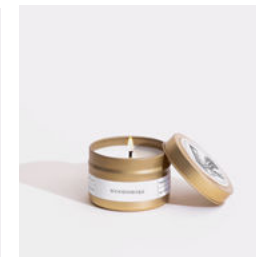
SANTAL*
GOLD TRAVEL CANDLE
SKU: WHL-FG-C-T-SL



SWEET FIG
GOLD TRAVEL CANDLE
SKU: WHL-FG-C-T-SF



SUNDAY MORNING*
GOLD TRAVEL CANDLE
SKU: WHL-FG-C-T-SM



WOODSMOKE
GOLD TRAVEL CANDLE
SKU: WHL-FG-C-T-WS
*While supplies last



ARTIST COLLABORATION

ALLISON KUNATH

Rich olfactory memories of time spent in the desert inspired this trio of fragrances: the smell of smoke in your hair the morning after a campfire, an altar offering incense, herbs, and sweet honey, the scent of the California High Desert after the first rain of the season. California-based artist Allison Kunath drew from her own recollections as inspiration for these bold, deep, unique aromas to compliment her powerful portraits that evoke the strength and beauty of womankind.

CASE PACK: 6

ADDITIONAL DETAILS:
BURNS UP TO 70 HOURS
NET WT: 10 OZ / 283 G
MIN ORDER: 1 CASE PACK

*DUSTCOVERS ARE INCLUDED.



PETRICHOR
SKU: WHL-FG-C-AK-PT

Inspired by the scent of the California High Desert after the first rain of the season. Creosote, desert sage, and sun baked rocks. Lighter florals of lavender, desert rose and earthy agave contrast beautifully with herbaceous wild thyme and sage brush and a base of dusty woods, wild musk, and patchouli.



MOJAVE EMBERS
SKU: WHL-FG-C-AK-ME

Inspired by the smell of smoke in your hair the morning after a campfire, and dusty desert roads at night. Notes of clove and pine float above a heart of smoky incense and damp moss anchored by a woody, musky base of birch, amber, vanilla, santal, and cedar.



SAFFRON BLOOM
SKU: WHL-FG-C-AK-SB

Inspired by an altar offering incense, herbs and sweet honey. Tobacco, leather, and rich black soil. A spicy saffron top note highlights a heart of elemi, incense, and moss over a rich base of cashmere wood, patchouli, birch, and olibanum.

*10% OF PROCEEDS FROM EACH CANDLE DONATED TO THE BELOW ORGANIZATIONS



Provides sexual health care in the United States and globally.



Advocates for the protection and promotion of the human rights of women and girls.



Supports the advancement of sexual and reproductive rights for women and gender diverse people.

COLLECTION

STATEMENT MATCHES

Say it with stylish XL matches featuring cheeky greetings foil pressed in gold on brightly colored matchboxes, perfect for special occasions or just because. Pairs beautifully with a candle as a gift.

CASE PACK: 6

ADDITIONAL DETAILS:
CONTAINS 55 MATCHSTICKS
DIMENSIONS: 4.7" x 2.5" x 0.78"
MIN ORDER: 1 CASE PACK

*MATCHES ARE UNABLE TO SHIP TO CANADA



BONJOUR EMERALD MATCHBOX*
SKU: WHL-FG-A-M-B



XOXO PINK MATCHBOX*
SKU: WHL-FG-A-M-XO



MAKE A WISH SAGE MATCHBOX*
SKU: WHL-FG-A-M-MAW



CONGRATS LILAC MATCHBOX
SKU: WHL-FG-A-M-C

COLLECTION

HAND + BODY BARS

Packaged in a minimalist box and cut into a chic cube, this bar of soap will elevate any bathroom. Our hand and body soap bars are formulated without parabens, phthalates, synthetic dyes, sulfates, silicones, or synthetic fragrance.

Brooklyn Bath Studio is our new line of wellness creations made with all-natural ingredients, chic minimalist packaging, and, of course, the delicious otherworldly scents we're known for. Our purpose is to cleanse, nourish, and delight.

CASE PACK: 6

ADDITIONAL DETAILS:
NET WT: 5 OZ / 142 G
MIN ORDER: 1 CASE PACK



**ROSEWATER CASSIS
SOOTHING OATMEAL BAR**
SKU: WHL-FG-BS-RW



**BERGAMOT NEROLI
BALANCING PINK CLAY BAR**
SKU: WHL-FG-BS-BN



**PALO SANTO
DETOXIFYING CHARCOAL BAR**
SKU: WHL-FG-BS-PS

FRAGRANCE GLOSSARY

BALI

On a balmy day in Bali, the soothing aroma of frangipani incense escapes from a local temple while fragrant champaca petals rain from the sky, a heavenly blend of smoke and light warm floralcy.

BALSAM

Balsam captures a winter getaway in a cozy cabin tucked away in a forest of fragrant evergreens in Upstate New York. When lit, fresh top notes of fir needle lift to reveal warm middle notes of cedar and pine and a lingering base of resinous fir balsam.

BROOKLYN

It was only a matter of time before we created a candle just for our favorite destination of all—our home of Brooklyn. Inspired by late nights lingering with friends in aged leather booths of bustling cocktail bars, live jazz serenading the room and sipping drinks infused with exotic ingredients like wild sage, cassis, and orange blossom.

CASSIS

Sweet and earthy notes of black currants, red berries, and wild rose petals.

CATSKILLS

Imagine a tranquil hike in the woods of the Catskill Mountains after an autumn rainstorm, as your feet crunch atop fallen pine needles and the fresh air is flecked with the scent of cedar, cypress, and juniper

CINDER

Like a crackling fire in a cozy cabin, smoky notes of woodsmoke, incense, and cedar embers meld together to form a blanket of aroma, enveloping you in its warmth.

COCO GARDENIA

Inspired by a serene beachside retreat in Bali, nestled in a garden cabana surrounded by coconut palms and fragrant gardenia blossoms. Top notes of coconut and cucumber water, a heart of gardenia and ylang-ylang, and a base of rhubarb and vanilla bean will transport you to an island oasis.

DESERT STARGAZE

After the sun goes down, a cool breeze envelopes you in the scent of desert orchids and citrus blossoms. Grounded by base notes of amber and vetiver, Desert Stargaze is a relaxing journey through the Mojave landscape.

FERN + MOSS

Fern + Moss blends notes of sage and lavender with woody base notes of spruce and pine to capture the elusive aroma of the great outdoors. This fragrance oil is infused with natural sage, lavandin, and orange essential oils.

FLOWER CROWN

A bohemian rhapsody of dreamy florals. Delicate notes of dahlia petals, midnight jasmine, and orange blossom dance with bright citrus zest and sweet wild currant and red raspberries. This enchanting floral-gourmand is for all you free spirits and floral fans alike.

GREEN TOMATO

Green Tomato is your backyard garden come to life in late summer—fresh tomato leaf is uplifted by notes of lemon zest and grounded by herbaceous notes of thyme and basil.

HAWAII RAIN

Imagine sheltering from the rain underneath the tree canopies in the dense Hawaiian mountains, surrounded by the most beautiful blooms and fragrant plantlife. With notes of coconut water and bitter orange, river jasmine and raindrops, that is precisely what Hawaii Rain evokes.

HERBARIUM

Herbarium encompasses the uplifting symphony of herbaceous aromas of midsummer bounty ready to be plucked and savored with al fresco dinners under a starlit sky. Fresh basil, thyme, and rosemary are brightened with bergamot and softened with petitgrain—the perfect summer fragrance.

HINOKI

Notes of hinoki cypress, cashmere woods, and cedar leaf dance above a heart of orris, redwood bark, and cardamom grounded by base of sandalwood.

ITALIA

Dashes of exotic spices in a bustling Italian pasticceria inspired this fragrant blend of cardamom, vanilla, clove, incense, and orange blossom.

JAPANESE CITRUS

Top notes of satsuma and yuzu flirt with bergamot and a hint of jasmine to form an energizing and exotic citrus — an aromatic soundtrack to summer days.

KYOTO

The tree-lined streets and wooden architecture in Kyoto inspired this meditative blend of Hinoki cypress, cedar, sandalwood, vetiver, and pine. The ethos of Kyoto is one of wood, rain, and art.

LAVENDER DAZE

Lavender Daze recalls an oasis of calm-inducing wild lavender fields: the rich floral aroma of Bulgarian lavender fuses with soothing bucolic notes of green meadow grass, peonies, and eucalyptus leaves.

LEATHER JACKET

Wrap yourself up in the memory of your favorite, perfectly-worn leather jacket with cozy notes of vetiver, timur pepper, leather and cedar.

LILAC HAZE

A beautifully overgrown garden welcomes visitors to an upstate country house in early Spring, lilac blossoms and new blooms everywhere, wild and free. Light floral notes of lilac and lily of the valley twirl with notes of fresh greenery, bergamot, and white musk: a flower lover's dream.

LOVE POTION

Exotic notes of jasmine blossoms, calming lavender, and bright mandarin join in an olfactory experience reminiscent of a freshly picked bouquet of wildflowers.

MARRAKECH

Leathery, honeyed notes of saffron emanate from Place Des Épices, the spice market in the heart of Marrakech, commingling with a soft background of myrrh and sandalwood incense, an olfactive escape to the aromatic souks of Marrakech.

MATCHA

An ode to the meditative beauty and ceremonial ritual of making a fresh cup of Matcha tea in the morning. Grassy notes of herbaceous matcha tea leaves brimming with umami dance with orange flower, lavender, and carrot seed, quietly softened by luxurious undertones of cashmere and soft suede.

MAUI

The tide rises and falls on a secret beach on the island of Maui and with it, notes of sea salt, sea moss, and driftwood evaporate into the air. A touch of zesty bergamot and soft ylang ylang round out aromas of the ocean.

MOJAVE EMBERS

Inspired by the smell of smoke in your hair the morning after a campfire, and dusty desert roads at night. Notes of clove and pine float above a heart of smoky incense and damp moss anchored by a woody, musky base of birch, amber, vanilla, santal, and cedar.

MONTANA FOREST

Inspired by the fresh evergreens that grow in the airy mountains of Montana, this scent is reminiscent of nature in a far-off place.

NEROLI

Notes of sage, lily, neroli, and jasmine over a base of orange blossom and amber commingle in this uplifting and energizing fragrance inspired by neroli oil, the sweet bright oil extracted from the blossom of an orange tree.

PALO SANTO

Features calming top notes of cedar and mint, middle notes of cypress, and eucalyptus, and warm base notes of sandalwood and amber. This candle is infused with eucalyptus, peppermint, and cedarwood essential oils.

PETRICHOR

Inspired by the scent of the California High Desert after the first rain of the season. Creosote, desert sage, and sun baked rocks. Lighter florals of lavender, desert rose and earthy agave contrast beautifully with herbaceous wild thyme and sage brush and a base of dusty woods, wild musk, and patchouli.

SAFFRON BLOOM

Inspired by an altar offering incense, herbs and sweet honey. Tobacco, leather, and rich black soil. A spicy saffron top note highlights a heart of elemi, incense, and moss over a rich base of cashmere wood, patchouli, birch, and oilbanum.

SANTA FE

A spontaneous February trip inspired this earthy, calming scent, whose aromas of orchid cactus, wild sage, juniper, and piñon evoke days exploring the desert landscape and nights warming by the kiva fireplace.

SANTAL

A sultry masculine blend of earth and woods. Hinoki Cypress floats above a rich heart of cedar and pine over a warm base of vetiver and sandalwood.

SANTORINI

Reminiscent of the earthy, fruity aromas of Santorini's abundant fig trees and lush native currants. Woody notes of sandalwood and amber form a rich, warm base that will make you dream of the Greek Isles.

SEA SALT + SURF

Nostalgic notes of salty sea breeze float amidst aromas of marine sage, watery jasmine, and beachy musk reminiscent of surfwax and drifting on ocean waves. Available while supplies last.

SEVILLA

Orange blossoms and incense create an intoxicating blend of citrus and smoke as you walk down a dimly lit cobblestone street, plucked flamenco guitars enlivening your step, as revelers share tapas and laughs along Calle Betis.

FRAGRANCE GLOSSARY

SHISO LEAF

This is our olfactory love letter to the shiso leaf, the fragrant Japanese herb often used as garnish, but, in this case, is the star ingredient. A heart of wild shiso and vetiver grass is accentuated by top notes of yuzu zest and fresh peppercorn and grounded by earthy notes of forest moss and cinnamon bark for an energizing fragrance that is refreshing, herbaceous, and bright.

SUNDAY MORNING

Reminiscent of whiling away a Sunday morning at the local farmer's market, sifting through luscious fruits and freshly picked flowers. Top notes of pear and bergamot float above a heart of jasmine and gardenia with a heady base of amber woods.

SWEET FIG

Summon your inner hippie with the earthy, ripe aroma of a freshly picked fig. This refreshing and soothing scent is perfect for burning during early morning yoga or meditation practices.

THAI BASIL

The vibrancy of Thai Basil inspired this refreshing fragrance, capturing the grassy, peppery essence of the savory herb. Brightened with notes of lemon rind and orange zest, herbaceous notes of Thai basil and wild mint blend seamlessly with a base of tamarind and clove woods.

TOASTED PUMPKIN

Toasted Pumpkin is the perfect scent symphony of toasted pumpkin seeds, cardamom, nutmeg, clove, and cinnamon notes.

TUILERIES

Inspired by an enchanting stroll through the idyllic Jardin des Tuileries in Paris, this candle finds delicate floral notes of tuberose and muguet dancing above a heart of jasmine and gardenia, anchored by a heady base of amber woods.

TULUM

Consider this our love letter to Tulum, where, amongst fragrant gardenia blossoms and beachside coconut palms, nirvana awaits. Top notes of cucumber water and coconut husk wade above a heart of gardenia and ylang-ylang over notes of rhubarb and vanilla bean: an olfactory translation of the tranquil tropical oasis so you never have to leave.

WOODSMOKE

Our Woodsmoke candle is the quintessential mini-fireplace — complete with the steady, calming flicker of a flame and the smoky, rich aroma of burning wood. Light this candle and notice notes of cedar leaf, labdanum, incense, and leather rounding out a rich smokiness.

WHOLESALE POLICIES

ORDERING AND PAYMENT

EUROPE (SHIPS FROM EU)

Minimum order: 350€, shipping costs at your expense.

Orders over 950€: shipping costs are included.

Non-European Union members have customs/duty fees at their expense. Orders can be placed on our European wholesale site at brooklyncandlestudiowholesale.world

CANADA (SHIPS FROM US)

Minimum order: \$400 CAD, shipping costs at your expense.

Orders over \$1000 CAD: shipping costs included.

Orders over \$1500 CAD: shipping *and* customs/duty fees included.

REST OF THE WORLD (SHIPS FROM US)

Minimum order: \$1000 USD, shipping costs included. Customs/duty fees not included.

Orders that do not meet this criteria will not be processed. Payment must be made by Paypal, wire transfer or credit card (Visa, Mastercard, Discover or Amex). Credit cards are preferred.

SHIPPING + DELIVERY

We ship wholesale orders via Colissimo, Chronopost, and UPS. Let us know if you have your own method of shipping and would like to arrange payment and a pickup yourself. We will provide a tracking number upon shipment.

Brooklyn Candle Studio is not responsible for lost or stolen packages once delivered – please take adequate precautions to make sure your orders are delivered to you safely. Brooklyn Candle Studio has no control over delivery delays.

LEAD TIME

Unless otherwise indicated by our sales team:

Europe: orders will ship within 48-72 hours.

Canada/Rest of World: orders will ship within 2-3 weeks.

SAMPLES

Please reach out to us if you are interested in samples to discuss options available to our international customers.

TESTERS

Testers are not boxed. One of each tester can be purchased at half off wholesale price if at least one case pack of one scent is purchased. Please inquire if you would like testers. *Testers are not available for the Minimalist and Gold Travel Collections because they have lids.

GENERAL RETURN POLICY

We do not accept returns. All claims for shortages and/or damages must be reported to Brooklyn Candle Studio within 2 business days of receipt of merchandise. After a review of your request, an exchange will be completed or a credit will be applied to a future purchase. Exchanges or credit towards future purchases will be based on the value of the merchandise at the time of purchase. Shipping and handling fees are not refundable.

STUDIO

Industry City Building 20
147 41st Avenue, Suite BE
Brooklyn, New York 11232
United States

SALES CONTACT INFO

US + Canada contact info:

Julia Jiang

julia@brooklyncandlestudio.com

International contact info:

Make It Agency

Cory Babin

sales@make-it-agency.com

Phone: +33 6 51 73 64 13

**Paris: In-person appointments available upon request*

BROOKLYN CANDLE STUDIO

WHOLESALE



INSTAGRAM: @BROOKLYNCANDLESTUDIO

FACEBOOK: FACEBOOK.COM/BROOKLYNCANDLESTUDIO

TWITTER: @BKCANDLESTUDIO

PINTEREST: PINTEREST.COM/BKCANDLESTUDIO