

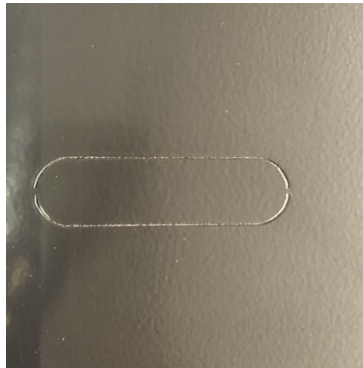
## Securing Your Pennsylvania Skill Cabinets

There are few important steps to do to secure your cabinet:

1. Change the factory locks and adjust your padlock bar.
  - a. The factory locks on the cabinet are for shipping purposes only.
  - b. The lock bar for your padlock is adjustable and is slotted on the backside to allow room for smaller, or bigger, locks.
    - i. You want your lock to be as close to the metal door as possible so that the door will not open at all with the padlock.
  - c. After adjusting the padlock bar there is a marking on the cabinet to place a set screw to prevent the bar from moving.
2. Any games with a horizontal padlock bar will have a punch-out or a removable plate on the left side of the cabinet to add an additional padlock bar.
  - a. Extra lock bars are available for purchase on Miele Manufacturing's online parts store.
3. Vertical cabinets, such as the Pennsylvania Skill Caviler, should be secured to the wall with supplied bracket.
  - a. It is a good idea in high-risk locations to bolt cabinets together, through the vault, as well as bolting to the wall.
4. Install center lock in vault door, if desired.



Adjustment to make padlock tighter to the door



Metal punchout to add. Second padlock bar.



Metal plate that can be removed to add second padlock bar.