



SOFTFALL RUBBER

The safe & fun surface for
communities and schools.





Safety meets fun: softfall playgrounds for every adventure.

When it comes to creating vibrant and engaging spaces for education and community activities, colourful softfall rubber surfaces have emerged as a fantastic solution. These versatile and visually striking surfaces not only offer a unique aesthetic appeal, but also provide numerous benefits that make them ideal for educational institutions and community spaces.

Whatever the space, Tuff Group is committed to delivering optimal solutions and products tailored precisely to your objectives and budget. Together, we will collaborate to bring your envisioned space to life.

Our experienced and dedicated team can:

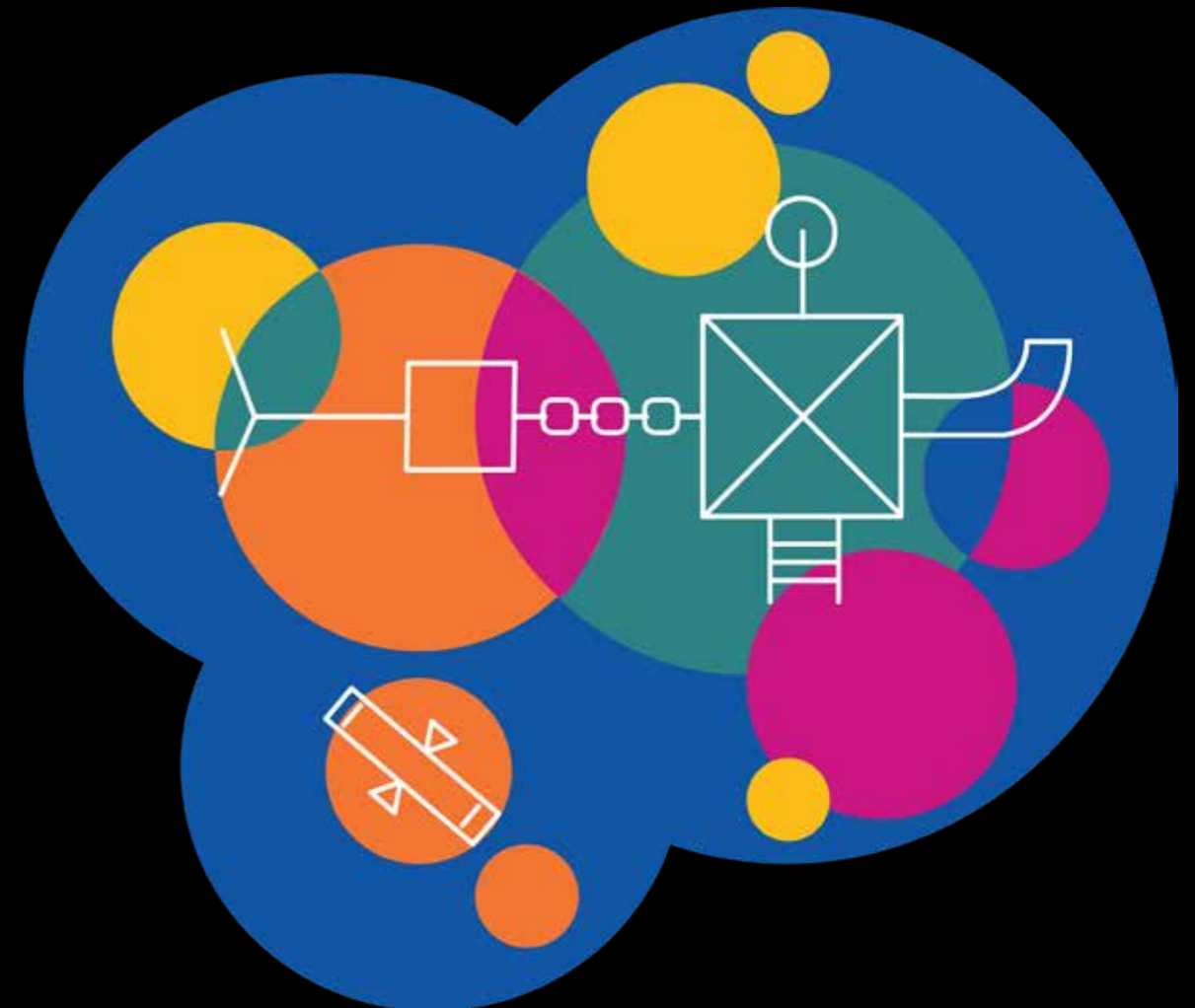
- **CONSULT** with you to achieve innovative solutions
- **SUPPLY** premium guaranteed products
- **INSTALL** to world class standards
- **MAINTAIN** your grounds' investment

Exceptional and long-lasting material, ideal for heavy use areas.

Rubber softfall surfaces stand as a premier choice for schools and communities, merging safety with enjoyment. Engineered to cushion falls, these surfaces curtail injury risks during active play, fostering a secure environment. Their vibrant spectrum of colours and limitless designs elevates visual aesthetics, enhancing the overall appeal of recreational areas. Offering longevity and minimal maintenance, these surfaces endure harsh weather conditions and heavy foot traffic, ensuring sustained use over time.

Rubber softfall surfaces are environmentally friendly due to their use of recycled materials, reduced resource consumption, low maintenance requirements, and potential for rainwater management.

Invaluable for promoting physical activity and social interaction, rubber softfall surfaces become hubs of outdoor engagement, enriching the lives of students and the wider community.





There's a choice to suit your community's needs.

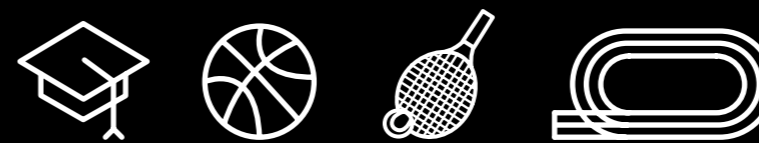
Depending on your community's needs, Tuff Group offer both a standard CSBR (Styrene-Butadiene Rubber) product, as well as EPDM (Ethylene Propylene Diene Monomer) and TPV (Thermoplastic Vulcanizate) as excellent surface solutions for recreation and sporting facilities. These products differ in benefits and are suited to different needs & budgets.

CSBR offers a balance of quality and affordability. It's sturdy, providing excellent durability and impact resistance, making it a cost-effective choice. CSBR remains a budget friendly, practical and safe option for recreational areas.

The more traditional rubber EPDM is known for its vivid colors, UV resistance, and durability, offering long-lasting vibrant colours.

TPV is a safer product, making it great for absorbing impact and reducing injuries. It's also more eco-friendly as it can be recycled and requires less energy to produce. Though there are limited colours available, TPV is highly rated for its safety benefits.

Depending on your budget and needs, CSBR balances cost and quality, EPDM offers durability and color variety, and TPV emphasizes safety and environmental responsibility.

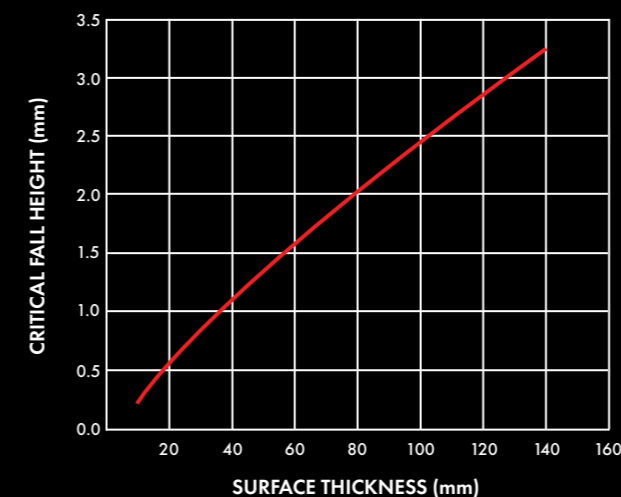


The leading environmentally friendly pre-coloured softfall rubber crumb.

Rubber softfall is engineered to minimize impact and mitigate the risk of injuries resulting from falls within playground settings. Through our wet-pour technique, we fabricate a foundation layer using recycled rubber, which is subsequently combined with your preferred coloured rubber to form the topcoat. This coloured layer is crafted from the standard CSBR range or the premium-grade materials of EPDM or TPV, depending on your needs & budget.

Our premium range incorporates UV-stabilized pigments, ensuring the retention of vibrant hues even in the most challenging weather conditions. Softfall rubber not only looks great but also adheres to the AS/NZS 4422:2016 standards for playground surfacing.

CRITICAL FALL HEIGHTS:



FEATURES OF PREMIUM RANGE:



NON-TOXIC



CONSISTENT COLOUR



DURABLE & LONG LASTING



UV STABILISED TO CONTROL COLOUR FADE

COLOUR RANGE:



More colours available on request, minimum orders may apply.



Roxby Downs Community.

Tuff Group successfully bid for the project to upgrade four outdated playgrounds in the Roxby City Council area in South Australia. The existing playgrounds - with unsuitable materials like tan bark, were replaced with a material suitable to the harsh weather conditions of South Australia to meet the community's safety needs.

Tuff Group executed a design and construction plan that involved removing the mulch, establishing a crushed rock base, installing an SBR insitu layer to meet safety compliance, and adding a vibrant layer of softfall rubber (EPDM) in the four colours representing the Roxby City Council, for each of the four playgrounds.

Through the reconstruction, the playgrounds have been revitalised into an engaging and lively environment that not only provides a durable surface suited to the harsh conditions of South Australia but establishes a safe environment for children to freely participate in outdoor activities without concerns of potential injuries.

From the Client:

“On behalf of Roxby Council, I would like to extend my sincere appreciation and big WELL DONE to you and your crew. You’ve been a breeze to work with and I hope to work with your company again.”

- Rene Arcangel Ayala - Municipal Services Supervisor, Roxby Council.



GET IN TOUCH

We'd love to hear about your project, contact us today

Tuff Group Head Office:
enquiries@tuffturf.com.au
03 9583 8283

58-60 Sunmore Close,
Heatherton VIC 3202
tuff-group.com.au
[@tuffturfau](https://www.instagram.com/tuffturfau)

