

 **banded.**


**REALTREE
LEGACY**



FALL '24 CATALOG



REALTREE® LEGACY

KEY FEATURES

Realtree® Legacy is an adaptation of the iconic 1986 Realtree® Original pattern, with a twist.

- Bark like treatment from the '86 Original pattern.
- Drop shadow zones to mimic the varying colorations in trees but to also help break up the vertical nature of a human form.
- Open zones flow through the pattern with contrasting highlights.
- Natural colors to match every timber setting.

Building on our Legacy



WE DID IT FIRST & WE'VE DONE IT AGAIN...

At Banded Hunting Gear, we are not just participants in innovation—we are the architects. With a history steeped in groundbreaking advances, we proudly stand as the original pioneers of breathable, waterfowl wader technology. Today, we proudly introduce three groundbreaking advancements in hunting apparel: Phantom X Series (All-New), Black Label ELITE Series (Revamped), and ASPIRE Collection (Revamped) Breathable Waders. These waders offer the best fit, unparalleled comfort, and remarkable durability—our finest creations to date. From the originator of breathable hunting waders to your doorstep, the best just got even better. Embrace the evolution of hunting waders.

PHANTOM X BREATHABLE WADERS

In our relentless quest for perfection, we meticulously refine and reimagine our designs, striving to anticipate the evolving needs of the dedicated hunter. It is from this unyielding pursuit that the Phantom X Series was born - a groundbreaking leap forward in hunting wader technology. This series isn't just an improvement; it's the embodiment of our dedication to excellence and innovation in every thread and seam.

At the heart of the Phantom X Series lies the revolutionary Phantom FlexFit System, a breakthrough in wader design that promises a transformative wading experience. This system is engineered for the hunter who moves with purpose through the water, providing an unmatched easy-glide experience. The Phantom FlexFit System doesn't just adapt to your movements; it enhances them, allowing for a seamless integration between the hunter and the natural world. This is where performance meets fluidity, ensuring every step is as intuitive as it is unencumbered.

To top it all off, Banded Phantom X Series Waders come with a **Full Two-Year Manufacturer Warranty**.
Sizes: Regular 9-14, King 12-14, and Stout 10-12. **Pattern:** Realtree Max-7, Realtree Legacy, Marsh Brown

\$349.99 - Uninsulated | BW002 / \$379.99 - Insulated | BW001



BLACK LABEL

— ELITE Series —

BREATHABLE WADERS

Elevating the Icon: Introducing the Revamped Black Label ELITE Series

At Banded Hunting Gear, we are not just participants in innovation—we are the architects. With a history steeped in groundbreaking advances, we proudly stand as the original pioneers of breathable, waterfowl wader technology. Today, we elevate our iconic Black Label ELITE Series waders to new heights, unveiling enhancements that redefine the standards of excellence. The Pinnacle of Wader Evolution: Experience the evolution of mastery with the revamped Black Label ELITE Series. These waders are not just updated; they are transformed, embodying the pinnacle of performance and design. Featuring our innovative FlexFit technology, these waders adapt fluidly to your movements, ensuring that every step taken in the wilderness is one of unmatched ease and confidence. Unyielding Durability Meets Innovation: We've fortified the most critical areas with our revolutionary Arc Welded seam technology. This cutting-edge approach eliminates stitching, providing an impervious barrier against the elements. Durability is not promised; it's guaranteed, allowing you to tackle the harshest conditions without a second thought.

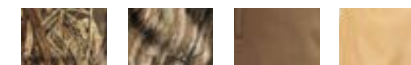
Experience effortless mobility with the new streamlined Elite-Fit design, providing easy-glide wading for unparalleled comfort and freedom of movement. Customize your comfort with EliteFit Tailored Fitment options, allowing customers to select their Body Size, Inseam Size, and Boot Size for a precisely tailored fit that enhances both comfort and functionality in the field. Equipped with a Center Front Zipper for swift on-the-fly access, entry, and exit—designated as ELITE-Z, where 'Z' stands for Zipper. The newly designed adjustable waist and shoulder strap system ensures a perfect, streamlined fit for enhanced comfort and performance under varied hunting conditions. Featuring cutting-edge Arc Welded Technology™, these waders boast a stitchless seam design throughout, ensuring superior durability and waterproof integrity. The advanced RZ-TRACTION boot design is molded to match foot movements with a deep-fluted traction pattern that flexes and responds, offering maximum stability and grip. Crafted from GO-5Layer fabric, the waders provide an optimal blend of lightweight comfort and robust, unmatched performance in any hunting environment. Incorporating SHEDS™ technology, they offer ultimate waterproof protection while maintaining high breathability. Stay warm in the coldest waters with 1600-g PrimaLoft® insulation in the boots, providing exceptional thermal comfort. The articulated knee design allows for maximum range of motion, making it easier to move freely.

Black Label Elite Series Waders come backed by a comprehensive **2-year full wader warranty**, underscoring our commitment to quality and customer satisfaction. **Sizes:** Body Size: Small - 3XL / Inseam Size: Short, Regular, Tall / Boot Size: 8 - 14

Pattern: Realtree Max-7, Realtree Legacy, Marsh Brown, Prairie

\$599.99 - Uninsulated (w/ Zipper) | BW005

\$499.99 Insulated (No Zipper) | BW004



**POUND FOR POUND,
ALL-AROUND, NO. 1.**



Zip-Out PrimaLoft®
Insulated Liner Jacket

CALEFACTION 3-IN-1 WADER JACKET

Calefaction, kal-e-fak'shun, adj. act of heating: state of being heated. It's everything you need in one do-everything, hunt-anywhere wader jacket, designed to keep you warm. Extreme weather swings call for versatility. Versatility calls for innovation, performance, and the finest materials known to man. Enter the Calefaction 3-n-1 Wader Jackets. SHELL: the 100% waterproof shell combines our exclusive SHEDS™ waterproof/breathable technology inside our durable GO3-LAYER™ fabric construction. Finished with fleece-lined upper hand-warmer pockets, zippered and magnetic chest pockets, lower bellows shell pockets, watertight YKK Zippers, and a tri-adjust hood. LINER: the zip-out liner features 100-grams of PrimaLoft®, the worlds most advanced insulation. 3 jacket options to cover any scenario - one price. That's versatility. **Sizes:** Small - 4XL / Large Tall - 2XL Tall. **Pattern:** Realtree Max-7, Realtree Legacy, Marsh Brown

\$329.99 | B1010046



WARMTH + MOBILITY.



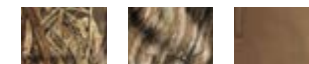
Pullover

Full-Zip

STRETCHAPEAKE SERIES

The popular, best-selling Chesapeake Jacket injected with STRETCH. The GO3-LAYER™ fabric construction provides lightweight performance with superior durability. Injected with 4-way stretch for extreme maneuverability and comfort. A sensationally comfortable coral-fleece lining is wrapped in a SHEDS™ waterproof/breathable shell. Coral-fleece lined upper hand-warmer pockets. Convenient magnetic and zippered chest pockets, adjustable stretch cuffs, and an elastic drawcord hem. The Pullover option is equipped with a zippered drop-in torso pocket. The Pullover design features a mock that provides additional coverage and neck protection. Full-Zip design features anatomical tri-adjust hood for full head protection. Two (2) YKK zippered hand pockets. **Sizes:** Small - 3XL / Large Tall - 2XL Tall. **Pattern:** Realtree Max-7, Realtree Legacy, Marsh Brown

\$229.99 - Pullover | B1010047 / \$259.99 - Full-Zip Jacket | B1010048



WATERPROOF PROTECTION WITHOUT THE WEIGHT.

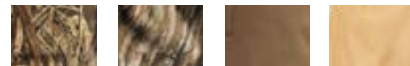
FREAKIN' AWESOME FLEECE.



New FEATHERLITE RAIN SHELL

The Featherlite Rain Shell is designed for ultimate performance in wet conditions. Featuring SHEDS waterproof breathable technology, this rain shell ensures you stay dry without sacrificing comfort. The waterproof variable conditions adjustable cuffs provide a customizable fit to keep out the elements, while the anatomical tri-adjust hood offers superior protection and flexibility. Equipped with a YKK zippered front, the shell offers durable, reliable closure. Despite its feather-light construction, the shell provides robust waterproof protection, making it an ideal choice for variable weather conditions. Its uninsulated, lightweight design ensures ease of movement and maximum comfort, making the Featherlite Rain Shell a must-have for any outdoor enthusiast. **Sizes:** Small - 3XL / Large Tall - 2XL Tall. **Pattern:** Realtree Max-7, Realtree Legacy, Marsh Brown, Prairie

\$149.99 | B1010085



Pullover



Full-Zip

WATERPROOF PULLOVER

Unprepared will never describe the situation with a 1/4 zip Waterproof Hooded Pullover in your arsenal. Fully windproof and waterproof, with a durable, abrasion-resistant face. This protective pullover features SHEDS™ waterproof/breathable technology, waterproof seams, anatomic tri-adjust hood, two zippered chest pockets, two zippered lower hand pockets, and adjustable waterproof cuffs. This is one of those never-leave-home-without-it jackets. **Sizes:** Small - 3XL / Large Tall - 2XL Tall. **Pattern:** Realtree Max-7, Realtree Legacy

\$229.99 | B1010030



MID-LAYER FLEECE SERIES

Lightweight and warm, they are perfect for mild days with a chill in the air or use them in conjunction with a water and windproof outer layer such as the Banded FeatherLite Rain Shell and you have a combination that keeps your warm & dry. Whether used as a layering piece of your system or primary protection, the Mid-Layer Hooded Jacket & Pullover are a must have in your clothing arsenal. Available in Pullover and Full-Zip and With Hood and Without Hood options. **Sizes:** Small - 4XL. **Pattern:** Realtree Max-7, Realtree Legacy, Black, Charcoal, Spanish Moss

\$119.99 - Pullover | B1010031

\$129.99 - Hooded Pullover | B1010061

\$129.99 - Jacket | B1010008

\$139.99 - Hooded Jacket | B1010062





THE ULTIMATE HOODIES



Hoodie



Half-Zip Hoodie



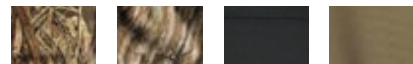
FANATECH SERIES

The Fanatech Soft-Shell Series offers a range of features designed for optimal performance and comfort in the field. Constructed from highly durable, lightweight stretch polyester fabric, these soft-shell garments provide both durability and flexibility. The anatomical tri-adjust hood offers customizable protection, while the low-profile adjustable cuffs ensure a snug fit without adding bulk. Featuring fleece-lined upper handwarmer pockets and a zippered top-side access pocket. Engineered with advanced moisture-wicking technology, the Fanatech Soft-Shell Series keeps you dry and comfortable by effectively managing perspiration. These garments are designed to offer superior breathability and thermal regulation, ensuring you remain comfortable in a variety of conditions. Ideal for hunters and outdoor enthusiasts, the Fanatech Soft-Shell Series combines innovation, functionality, and comfort. Available in Pullover and Half-Zip Pullover options. **Sizes:** Small - 3XL. **Pattern:** Realtree Max-7, Realtree Legacy, Black, Spanish Moss

\$129.99 - Hoodie | B1050016

\$129.99 - Masked Hoodie | B1050021

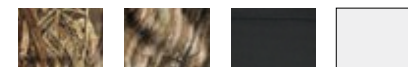
\$129.99 - Half-Zip Hoodie | B1050017



ATCHAFALAYA PULLOVER

The ultimate hoody, constructed of a windproof and weather-resistant Stealth-Shell, is backed with a sensationally comfortable coral-fleece liner. Featuring our Q.W.A.S. fabric technology, which is quiet, warm, and water-resistant, it handles multiple conditions with ease. The coral fleece inner layer provides warmth and comfort, while the lined front pocket serves as a hand warmer and offers ample storage. An anatomical tri-adjust hood keeps the weather out and the heat in, and the adjustable drawcord hem seals off any unwanted drafts. This hoody is designed to perform exceptionally well in a variety of weather conditions, making it a versatile and essential piece for any scenario. **Sizes:** Small - 3XL. **Pattern:** Realtree Max-7, Realtree Legacy, Black, White

\$119.99 | B1050003



DEPENDABLE, DURABLE, DYNAMIC.



Pant



Shirt

WHITE RIVER 3.0 PANT

The White River 3.0 Wader Pant boasts a soft-shell construction with an ultra-comfortable microfleece lining, ensuring warmth and coziness. Designed for optimal mobility, these pants feature articulated knees and 4-way stretch fabric. Practicality is enhanced with two handwarmer pockets and integrated Velcro ankle garters, making these pants an essential addition to any hunters wardrobe. **Sizes:** Small - 34L / Large Tall - 2XL Tall. **Pattern:** Realtree Max-7, Realtree Legacy, Spanish Moss

\$109.99 | B1020039



UTILITY 2.0 PANT

The Utility 2.0 Soft Shell Pant is a versatile all-use pant designed for ultimate performance and comfort. Constructed from wind-blocking, water-resistant soft-shell fabric with a tec-fleece grid backing, these pants offer superior protection against the elements. The integrated adjustable waist belt ensures a secure and customizable fit. Featuring two upper hand pockets, two zippered thigh pockets, and two zipper rear pockets, these pants provide ample storage for all your essentials. **Sizes:** 30x32 - 44x32. **Pattern:** Realtree Max-7, Realtree Legacy, Prairie, Charcoal, Marsh Brown, Prairie

\$149.99 | B1020020



THE WORKHORSE SERIES

The Workhorse Lightweight Series is crafted to deliver exceptional performance in demanding conditions. Made from high-performance lightweight fabric, these garments offer excellent durability without compromising on comfort. Featuring advanced moisture-wicking technology, the series ensures you stay dry and comfortable by efficiently managing perspiration. The Workhorse Lightweight Series is designed for functionality and practicality. This series combines innovative features with superior comfort and durability. Built to Work. **Jacket Sizes:** Small - 3XL / Large Tall - 2XL Tall. **Pant Sizes:** 30x32 - 44x32. **Pattern:** Realtree Max-7, Realtree Legacy, Prairie

\$119.99 - Shirt | B1030041
\$129.99 - Pant | B1020048



SOFT-SHELL WADER PANT

These are the kind of pants you put on, and never take off. Integrated with technology to perfectly pair with Banded Breathable waders. 4-way stretch soft-shell fabric backed with a micro-fleece lining makes these pants the ultimate in comfort and flexibility. Equipped with two upper hand-warmer pockets and integrated adjustable gaiters. They work flawlessly with waders and look flawless without them. **Sizes:** 30x32 - 44x32. **Pattern:** Realtree Max-7, Realtree Legacy, Crocodile, Prairie, Spanish Moss.

\$109.99 | B1020014



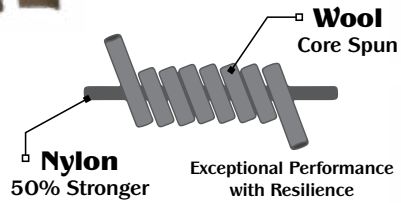
HUNT-TO-CAMP PANT

The Hunt-To-Camp Tec Fleece Wader Pant features a soft and warm medium-weight fleece construction, providing comfort and insulation. Designed with a tapered fit, these pants offer a streamlined look that fits perfectly underneath waders. . Ideal for wearing under waders, these pants are versatile enough to transition seamlessly from the hunt to a casual camp setting. **Sizes:** Small - 3XL. **Pattern:** Heathered Gray

\$119.99 | B1020036



THE ULTIMATE BASE LAYER.



BANDED BASE MERINO WOOL

Meet the BANDED Base Merino Wool Series. The ultimate next-to-skin layer. No fiber breathes and manages moisture better than Merino Wool. In other words, you're going to stay dry and comfortable. Whether it's a warm early-season day, or a frigid late-season ice buster— always start with Banded high-performance, premium-grade Merino Wool. Available in a Mock Crew, 1/4 Zip Pullover, Zippered Hoodie and a Wool Bottom. Available in 180-g (Light Chocolate) and 230-g (Chocolate) | **Sizes:** Small - 3XL **Pattern:** Light Chocolate (180-g) and Dark Chocolate (230-g)

\$79.99 - 180-g Crew | B1030017 / \$109.99 - 230-g Crew | B1030018
\$99.99 - 180-g 1/4 Zip | B1030019/ \$129.99 - 230-g 1/4 Zip | B1030020
\$139.99 - 230-g Hoodie | B1050009
\$79.99 - 180-g Bottom | B1020022 / \$109.99 - 230-g Bottom | B1020023



HYBRID NEO-RUBBER BOOT

The Black Label Elite Series Neo-Rubber Hybrid Boot offers 100% waterproof protection with its 7mm insulating neoprene, providing enhanced flexibility and complete waterproof reliability. Featuring a kick-off heel plate for easy removal, these boots also come with a smooth comfort liner that wicks away moisture, ensuring dry and comfortable wear. The RZ-Traction boot design is anatomically molded to match foot movements, incorporating a unique, deep-fluted traction pattern that grips, flexes, and responds for maximum traction and stability. Weighing approximately 2.5 pounds, these boots deliver exceptional performance and comfort for any outdoor activity. **Sizes:** 8 - 14. **Pattern:** Realtree Max-7, Realtree Legacy, Marsh Brown

\$219.99 | B1250001



BLE RUBBER BOOT

The Black Label Elite Rubber Boot is designed for ultimate performance and protection, offering 100% waterproof coverage with its durable rubber construction. This ensures complete waterproof protection and warmth in any condition. The boot features a kick-off heel plate for easy removal and a smooth comfort liner that wicks moisture to keep your feet dry. Its RZ-Traction boot design is anatomically molded to match foot movements, incorporating a unique, deep-fluted traction pattern that grips, flexes, and responds for maximum traction and stability. Weighing approximately 3.0 pounds and fitting true to size, these boots are available in uninsulated, 800-g insulation, and 1600-g insulation options to suit various temperature needs. **Sizes:** 8 - 14. **Pattern:** Realtree Max-7, Realtree Legacy, Marsh Brown

\$229.99 - Uninsulated | B1250002
\$239.99 - 800-g | B1250006
\$259.99 - 1600-g | B1250007



BLE CAMP SHOE

The Black Label Elite Camp Shoe offers 100% waterproof protection with its durable rubber construction, ensuring complete waterproof coverage and warmth. Uninsulated for versatility, this shoe features a kick-off heel plate for easy removal and a smooth comfort liner that wicks moisture to keep your feet dry. The RZ-Traction boot design is anatomically molded to match foot movements, incorporating a unique, deep-fluted traction pattern that grips, flexes, and responds for maximum traction and stability. Weighing approximately 1.5 pounds and fitting true to size, these camp shoes are designed for comfort and performance in any outdoor setting. **Sizes:** 8 - 14. **Pattern:** Marsh Brown

\$129.99 | B1250005





ATCHAFALAYA BEANIE

Sizes: One Size. **Pattern:** Realtree Max-7, Realtree Legacy

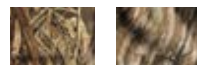
\$22.99 | B1060013



UFS FLEECE BEANIE

Sizes: One Size. **Pattern:** Realtree Max-7, Realtree Legacy

\$19.99 | B1060015



SOFT-SHELL BLIND GLOVE

Sizes: M - 2XL. **Pattern:** Realtree Max-7, Realtree Legacy, Marsh Brown

\$49.99 | B1070007



FLEECE HOOD

Sizes: One Size. **Pattern:** Realtree Max-7, Realtree Legacy

\$34.99 | B1060019



LWS BALACLAVA

Sizes: One Size. **Pattern:** Realtree Max-7, Realtree Legacy

\$34.99 | B1060011



CALEFACTION INSULATED GLOVE

Sizes: M - 2XL. **Pattern:** Realtree Max-7, Realtree Legacy, Marsh Brown

\$74.99 | B1070014



DOUBLE-LAYER GAITER

Sizes: One Size. **Pattern:** Realtree Max-7, Realtree Legacy, Marsh Brown

\$34.99 | B1080002



CAMO TRUCKER

Sizes: One Size. **Pattern:** Realtree Max-7, Realtree Legacy

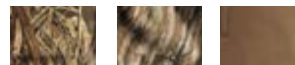
\$24.99 | B1060003



THE DECOY GLOVE

Sizes: One Size. **Pattern:** Crabber Orange

\$16.99 | B1070016





FIELD FRIEND TEE

Sizes: S - 3XL. Pattern: Ice Blue
\$34.99 | B1100151



VINTAGE BRAIDED TEE

Sizes: S - 3XL. Pattern: Vintage Navy
\$34.99 | B1100137



BESPOKE TEE

Sizes: S - 3XL. Pattern: Vintage White
\$34.99 | B1100134



**OLD'S COOL GOAT ROPE
DUCK STAMP PATCH**

Sizes: One Size. Pattern: Delta
\$29.99 | B1120091



**OLD'S COOL GOAT ROPE
DUCK STAMP PATCH**

Sizes: One Size. Pattern: Sneaux
\$29.99 | B1120091



**OLD'S COOL
7-PANEL CAP**

Sizes: One Size. Pattern: Slough
\$29.99 | B1120096



DUCK SEASON TEE

Sizes: S - 3XL. Pattern: Washed Denim
\$34.99 | B1100153



WOODLANDS TEE

Sizes: S - 3XL. Pattern: Brown Savannah
\$34.99 | A1110046



MIGRATE TEE

Sizes: S - 3XL. Pattern: Indigo
\$34.99 | A1110045



**QUACK-ATTACK
PATCH CAP**

Sizes: One Size. Pattern: Light Canvas
\$29.99 | B1120047



BADGE CAP

Sizes: One Size. Pattern: Black
\$29.99 | B1120051



OLD'S COOL BEANIE

Sizes: One Size. Pattern: Delta
\$29.99 | B1120097



Standard Size

Micro Size

AIR HARDSHELL BACKPACKS

Pattern: Realtree Max-7, Realtree Legacy, Marsh Brown

\$179.99 - Standard Size | B09356
\$149.99 - Micro Size | B09398



WELDED BOTTOM BACKPACK

Pattern: Realtree Max-7, Realtree Legacy, Marsh Brown

\$149.99 | B09400



AIR ELITE BLIND BAG

Pattern: Realtree Max-7, Realtree Legacy

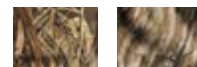
\$119.99 | B09357



AIR II BLIND BAG

Pattern: Realtree Max-7, Realtree Legacy

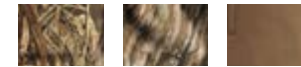
\$44.99 | B09354



IMPACT GUN CASE

Pattern: Realtree Max-7, Realtree Legacy, Marsh Brown

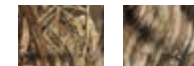
\$39.99 | B09361



TORX EVA GUN CASE

Pattern: Realtree Max-7, Realtree Legacy

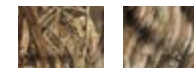
\$59.99 | B09360



TORX ELITE GUN CASE

Pattern: Realtree Max-7, Realtree Legacy

\$79.99 | B09359



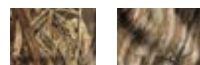


ZIP-OUT INSULATED LINER INCLUDED

YOUTH WHITE RIVER 3-IN-1 WADER JACKET

100% waterproof, extremely durable, warm and comfortable. Featuring 2 high hand warmer pockets, 2 lower hand warmer pockets, 2 cargo pockets, and a zip-out liner with 100-g PrimaLoft® insulation. **Sizes:** YM - YXL. **Pattern:** Realtree Max-7, Realtree Legacy

\$219.99 | B3010001



YOUTH CHESAPEAKE INSULATED PULLOVER

This 100% waterproof exterior shell and Coral fleece insulated liner will ensure Junior's dry and comfortable in the field for a long day of hunting. Features a kangaroo style fleece hand warmer pocket with zippered entry. **Sizes:** YS - YXL. **Pattern:** Realtree Max-7, Realtree Legacy

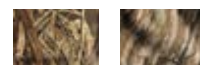
\$119.99 | B3010003



YOUTH WHITE RIVER INSULATED GLOVE

Designed to keep the kiddo warm, comfortable an din the hunt. SHEDS™ waterproof/breathable technology wrapped around 100-g HARS™ insulation. Drawcord cinch tight opening to seal in warmth. **Sizes:** YS - YXL. **Pattern:** Realtree Max-7, Realtree Legacy

\$29.99 | B3070001

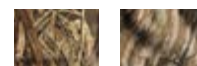


YOUTH TEC STALKER SERIES

Four-way stretch ultra-light fabric provides easy movement in any weather. A great early to mid-season piece and it's quick drying capabilities with thumb-loop cuffs make it a great under layer for when the temps drop. **Sizes:** YS - YXL. **Pattern:** Realtree Max-7, Realtree Legacy

\$34.99 - Mock Shirt | B3030001

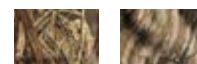
\$39.99 - 1/4 Zip | B3030002



YOUTH SQUAW CREEK INSULATED BIB

Bibs are the most important item for a comfortable layout hunt, and we spared no detail in designing the perfect pair, now available in youth sizes. We started with warm and waterproof by putting SHEDS™ shell over 100 grams of PrimaLoft Silver insulation and fleece-lined hand-warmer chest pockets. **Sizes:** YS - YXL. **Pattern:** Realtree Max-7, Realtree Legacy

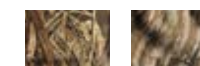
\$139.99 | B3020001



YOUTH ATCHAFALAYA PULLOVER

Sensationally comfortable coral fleece lining. Featuring a stealthy quiet soft-shell exterior that is wind and weather resistant and fleece-lined hood and front hand-warmer pocket. **Sizes:** YS - YXL. **Pattern:** Realtree Max-7, Realtree Legacy

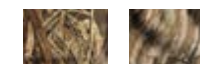
\$109.99 | B3010005



YOUTH RZ-X BREATHABLE WADERS

The RZ-XWC series features anatomical seam mapping that mirrors body movement, dramatically reducing seam fatigue. Constructed with SHEDS™ waterproof/breathable technology and HARS™ Insulation Technology. All models use 1600-g Thinsulate™ insulated boots. Fleece-lined hand-warmer chest pocket, adjustable belts and suspenders. **Sizes:** Y1-Y13. **Pattern:** Realtree Max-7, Realtree Legacy

\$359.99 | B100002





3-in-1 Wader Jacket
w/ Zipout Insulated Liner



Chamois Shirt



Soft-Shell
Hooded Pullover



Heavy Fleece Pullover



Heavy Fleece Vest



Insulated
Field Bib

AVERY ORIGINALS APPAREL

Avery Outdoors - leading the way in waterfowling for over 25 Years. It started in '94 with our popular and Original Quick-Set Boat Blind, still a staple today in versatile duck blinds for boats. Within a few years, Avery released a full-line of Original, first-of-its-kind waterfowl hunting products. First to bring waterfowl hunters Floating Blind Bags and Gun Cases. First to offer lifelike decoy poses through exclusive carvings. First to bring an assortment of hunting accessories and blinds, and the First to bring a full-line of sporting dog products. Avery was your First - forever creating lasting memories. That's Original Waterfowl Gear. **Sizes:** Small - 4XL. **Pattern:** Realtree Max-7, Realtree Legacy

\$189.99 - 3 in 1 Wader Jacket | A1010055

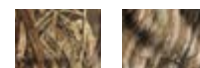
\$79.99 - Chamois Shirt | A1030027

\$119.99 - Soft Shell Hooded Pullover | A1010070

\$149.99 - Heavy TecFleece Pullover | A1010069

\$119.99 - Heavy TecFleece Vest | A1040024

\$159.99 - Insulated Field Bib | A1020030





NO BREAK.™

RETRIEVER RESTRAINT SAFETY SYSTEM



PATENTED : #US 11,889,815 B2

New

NO BREAK™ RETRIEVER RESTRAINT SYSTEM

The “NO BREAK™” Retriever Restraint System features a revolutionary design that prioritizes the safety of your retriever, ensuring they remain steady while awaiting the release to retrieve. This system’s patented mechanical design, a first of its kind, securely mounts to fixed objects and provides a steadfast hold that can only be released by the handler. With a state-of-the-art wireless remote release, handlers maintain full control over their retriever’s movements, releasing the dog at the perfect moment to ensure safety. Constructed with high-quality, durable, and weather-resistant materials, the “NO BREAK” system is built to withstand diverse hunting environments, ensuring reliability in all weather conditions. Its easy installation allows for quick mounting to various fixed objects, making it adaptable to different hunting scenarios and training locations. The system also supports enhanced training by reinforcing discipline and patience in your retriever, ensuring they wait for your signal before springing into action. Compact and portable, the “NO BREAK” system is designed for ease of transport and storage, making it convenient to take to any hunting site or store away when not in use. This system provides handlers with peace of mind, knowing their retriever will remain safe during the chaotic moments of gunfire, reducing anxiety and enhancing focus on the hunt.

\$299.99 - NO BREAK Device | 02820

\$39.99 - NO BREAK Stake | 02821

\$42.99 - NO BREAK NO TAKE Line | 02823



NO BREAK.™

RETRIEVER RESTRAINT SAFETY SYSTEM



SCAN ME

Scan this Code to watch a tutorial video on setting up and using the NO BREAK™ Retriever Restraint System and to learn tips, and tricks to using the system in both hunting and training scenarios.



GHG® XD SERIES DECOYS

Five years in the making, the all-new XD (Extraordinary Detail) series from GHG® is a combination of detail, moxie, and movement without compromise, making it the most complete decoy to hit the market since the introduction of the Pro-Grade Series in 2009. This series brings entirely unique, anatomically perfect poses that have never been seen before, featuring insane detail in ruffled feathers all the way down to the iris and pupil of the eye. We enlisted the world's best carvers to infuse LIFE into this new series, taking a radical departure from traditional decoys.

The XD series showcases IllusoryMotion™, which uses interacting color contrasts and shape positions to create the ultimate illusion of movement. Every pose offers a unique position that varies even from one side to the next. Unlike traditional decoys, the XD series does not replicate a single mold; instead, it presents a systematic spread where each decoy contributes to the overall puzzle.

These decoys float on a DuraFeather™ multi-material supple body, featuring deep feather detail and vibrant colors applied with a cutting-edge paint process for the highest detail and durability available. The Pro-Grade XD Series from GHG® is designed to outperform and outlast any decoy in any scenario, at any time.

Features include extraordinary carving detail with perfect posture and aggressive attitude, custom detail and performance built for the masses, and a DuraFeather™ supple body that cuts glare and provides a feathery-soft look while withstanding the toughest use. IllusoryMotion™ enhances the illusion of movement with interacting color contrasts and shape positions, and vibrant paint ensures unmatched durability.

XD Mallards (Available in Active, Feeder and Harvester Packs)

XD Black Ducks (Available in Harvester Pack)

XD Pintails (Available in Harvester Pack)

XD Full Body Canada Goose (Available in Active, Feeder, and Harvester Packs)

XD Full Body Specklebelly Goose (Available in Harvester Pack)

SERIOUS MOVEMENT

A FULL-LINE OF GHG® ELECTRONIC MOTION DECOYS



GHG® FINISHER SERIES ELECTRONIC SPITTER DECOY

Elevate your waterfowl hunting experience with the GHG Pro-Grade Butt Up Spitter Decoy – where innovation, realism, and durability unite to give you the ultimate edge in the field. Get ready to witness the power of lifelike motion and attract more ducks and geese than ever before. Crafted with painstaking precision, this decoy boasts an ultra-realistic, life-like feeding duck motion that lures in even the most skeptical birds. Featuring intricate detailing that mimics the authentic appearance of live ducks, guaranteeing an unbeatable level of realism that will have waterfowl flocking to your decoy spread. Built to endure the rigors of the field, our decoy is foam-filled for enhanced durability, ensuring it stands up to the challenges of harsh hunting conditions. Includes internal, rechargeable lithium-ion battery with 7 hour run time (charger included). Available in Drake Mallard, Hen Mallard, Pintail Drake, and Canada Goose options.

78010 Mallard Drake\$129.99 **78011 Mallard Hen\$129.99**
78013 Canada Goose\$149.99 **78012 Pintail Drake\$129.99**



GHG® FINISHER SERIES ELECTRONIC SWIMMER DECOY

Elevate your waterfowl hunting experience with the GHG Pro-Grade Swimmer Decoy – where innovation, realism, and durability unite to give you the ultimate edge in the field. Get ready to witness the power of lifelike motion and attract more ducks and geese than ever before. Crafted with painstaking precision, this decoy boasts an ultra-realistic, life-like swimming duck motion that lures in even the most skeptical birds. Featuring intricate detailing that mimics the authentic appearance of live ducks, guaranteeing an unbeatable level of realism that will have waterfowl flocking to your decoy spread. Built to endure the rigors of the field, our decoy is foam-filled for enhanced durability, ensuring it stands up to the challenges of harsh hunting conditions. Includes internal, rechargeable lithium-ion battery with 7 hour run time (charger included). Available in Drake Mallard, Hen Mallard, and Pintail Drake options.

78000-MD Mallard Drake\$159.99
7800-MH Mallard Hen.....\$159.99
78000-PIND Pintail Drake.....\$159.99
78000-WDK Wigeon Drake.....\$159.99
78000-WD Wood Duck\$159.99
78000-CG Canada Goose\$199.99



GHG® FINISHER SERIES ELECTRONIC RIPPLE MAKER DECOY

Elevate your waterfowl hunting setup with the GHG Pro-Grade Butt Up Ripple Decoy – a game-changing addition to your arsenal. This innovative decoy boasts an unmatched level of realism, featuring a life-like feeding/ripple motion that draws in even the most cautious waterfowl. Crafted with meticulous attention to detail, the GHG Pro-Grade Butt Up decoy body captures the essence of real ducks with ultra-realistic precision. Every feather and contour is designed to deceive and entice, making it a must-have for serious hunters. With a runtime of up to 6 hours on 4AA batteries (not included), this decoy ensures extended operation in the field. For optimal effect, we recommend using 1 quiver per dozen decoys, creating a dynamic and lifelike spread that waterfowl won't be able to resist. Choose from a variety of species including mallard drake and hen, pintail drake, and even a plain quiver disk. Each option adds a unique element to your hunting strategy, catering to various waterfowl scenarios.

78020 Mallard Drake\$59.99 **78021 Mallard Hen\$59.99**
78022 Pintail Drake\$59.99 **78023 Quiver Disk\$24.99**





335 Cumberland Street
Memphis, TN 38112
Banded.com

FREE SHIPPING ON ORDERS \$100+ | BANDED.COM | 800-333-5119 | @BandedBrands

FIND A STORE NEAR YOU

