

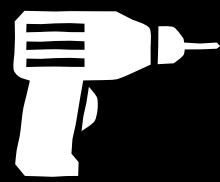
VANSPEED CAPSULE TRIM RING

Installation Guide

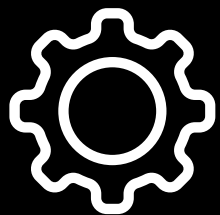
www.sergsupply.com



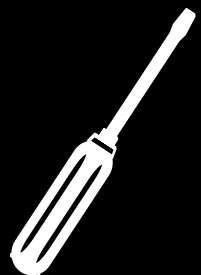
What you will need to get started:



Power Drill
With Phillips Drive +
Hand Router with
Flush Trim Bit



Rivet Nut Tool
With 1/4"-20 Thread Pattern



Screwdriver
With Phillips drive

Disclaimer!

This kit must be fastened properly to the walls of the vehicle to avoid damage or injury. You are responsible for ensuring that this kit is fastened using rivet nuts or other fastening method equal in strength. Modification to this unit may affect the structural strength of the unit. Avoid making large cuts on vehicle partitions or beams as this may weaken the vehicle. You are responsible for ensuring proper wiring and insulation when wiring your build as faulty wiring may create a fire hazard. Any cabinetry or load-bearing components need to be mounted to the vehicle and not to the wall panels alone.

What's Included:

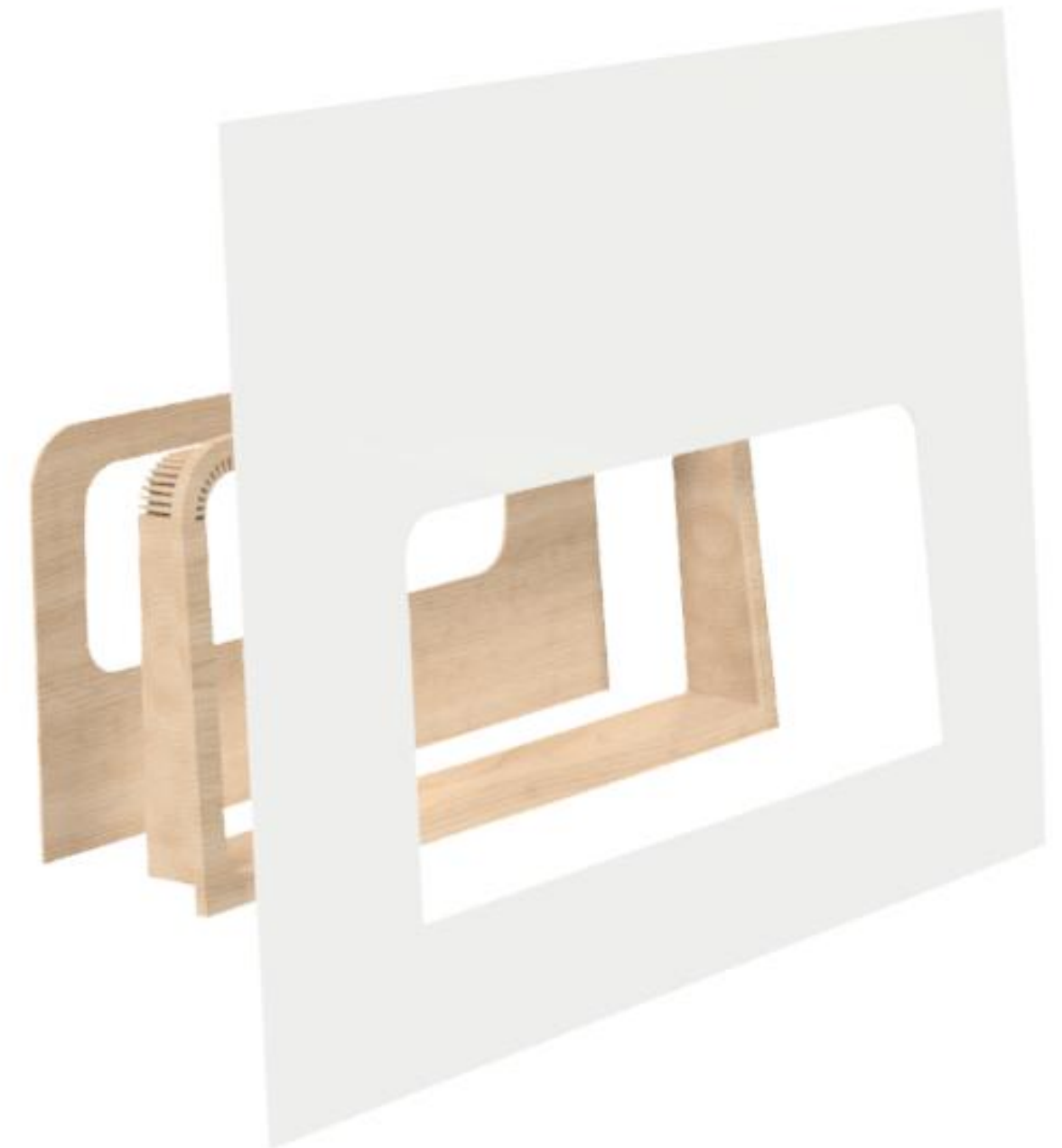
Your capsule trim ring kit will include:

- Driver side trim ring
- Passenger side trim ring
- Driver side backing
- Passenger side backing
- Mounting hardware



Preparation

- Your backing will have arrived in two styles; with CRL window cutout **or** without CRL window cutout.
- If you plan on painting or upholstering your trim ring kit in different colors/materials, the backings can be upholstered or coated prior to install.
- If you chose the universal fit, you will have a solid panel attached to your trim ring for mounting.
- Begin by insulating the inside of your capsule with 3M Thinsulate or Havelock wool. Try not to insulate too close to the window edge.



Backings

- **This kit is designed to work with Havelock or Thinsulate insulation. The backing is compressed between your insulation and your trim ring. Have inadequate insulation may cause your backing to show gaps around the edges. If you note any gaps on corners, take the backing out and add insulation to those areas. If you have a CRL window installed in your capsules, slide the backing cutout around the outer lip of your window before proceeding.**
- **Because CRL window angle and position vary depending on installer, the backing is intended to sit tightly over the window before final installation. Each CRL window cutout backing is designed to slip over the bunk window (covering any insulation) and to be held in place by your capsule.**
- **Note: Not all bunk windows are equal! Some windows taper wider on the top or bottom. You can loosen the clamp screws on the window to realign it if needed.**
- **Once your backing is popped in place, proceed with final install of your trim rings + wall panel kit.**

Alignment

- This kit is designed to maximize your space by achieving perfect alignment with your capsules. For this reason, our universal kit comes with a solid wall panel that conforms to your vehicle's rear upper section.
- If you purchased this with a Serg Supply Wall Panel Kit, you can skip the rest of this guide and use the factory drilled holes for a seamless installation.
- If you plan on preparing your own wall panel kit, this will serve as a template for your cutout.
- Please note, furring strips **WILL** push your trim rings away from the capsule. We can not deepen capsules to accommodate this.



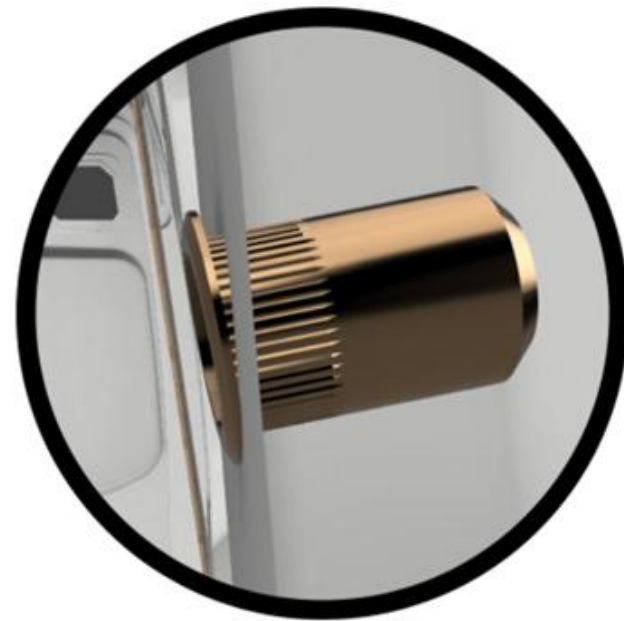
Universal Adapter Installation

- Start by making a note of the oval shaped cutouts on the factory wall. You will need to avoid these for your fasteners.
- Have a helping hand hold your wall panel in place. This wall panel will align with the curved rear edge of the vehicle and with the horizontal seam running the length of the van (Blue)
- Shoot the panel in place using the self-tappers provided. These can always be replaced with rivet nuts for a sturdier hold.

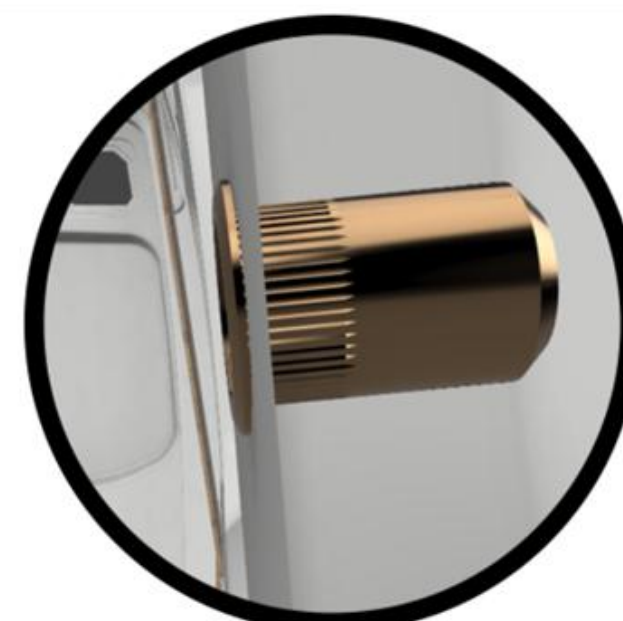


Rivet Nuts & Proper Threading

- If you decide to use rivet nuts, we've outlined the best practices below.
- Mark the proper holes with a permanent marker all at once before beginning to drill them out to size with the included drill bit.
- **Be very careful** not to apply too much pressure and keep the drill at a low speed to avoid damaging the outer shell of your vehicle. The drill bit tends to catch the metal and slam the bit into the sidewall of the van if you're not careful.
- Once all holes are drilled out, begin installing the rivet nuts. Be sure that the rivet nut is installed perpendicular to the surface as threading screws in at an angle may cross-thread the rivet nut.



Improper Angle



Proper Angle

Vanspeed Capsule Trim Ring Installation



Improper Angle

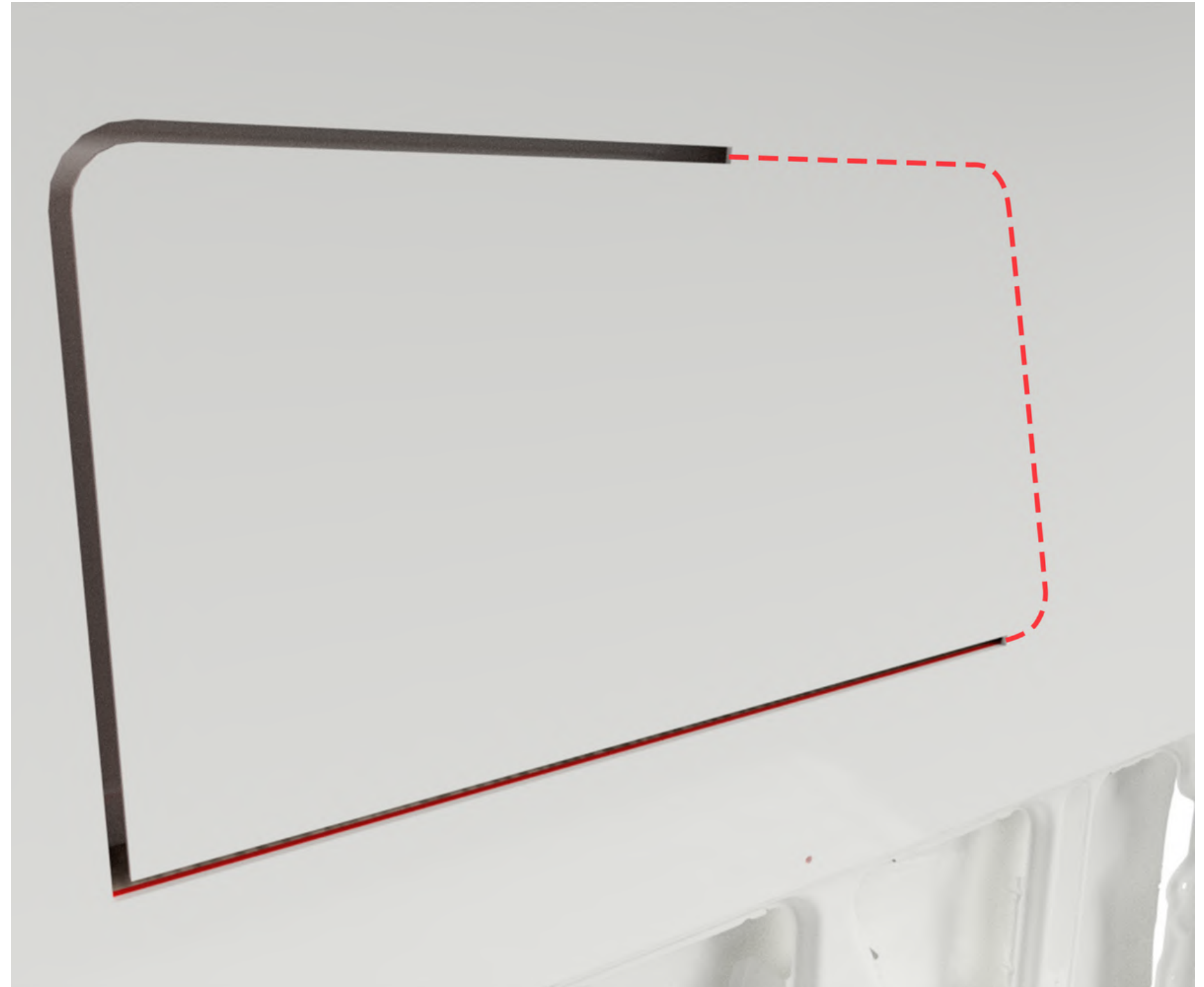


Proper Angle

- Take extra care to ensure the screw is threaded straight and not at an angle. Threading the screw at any angle may cross thread the rivet nut.
- Once all rivet nuts are installed, begin threading on your wall screws with a screwdriver. Use 1" screws for alignment holes. **Never use power tools to thread machine screws.**

Routing Tips and Tricks

- Get a flush-router bit with bearing and transfer the outline from our template to your new wall panel.
- Align the new wall panel to the trim ring and fasten them together.
- Set your router bit such that the bearing is **just behind your wall panel**. Setting the bearing more than 1/4" deeper than the opening may damage your trim ring and cause cracking around rounded curves.
- Route the entire edge of the opening while applying pressure onto the wall panel



Final Installation

- Reattach your wall paneling to your trim ring using wood glue + fasteners and fasten to wall using preferred method.
- Enjoy your next great adventure!

