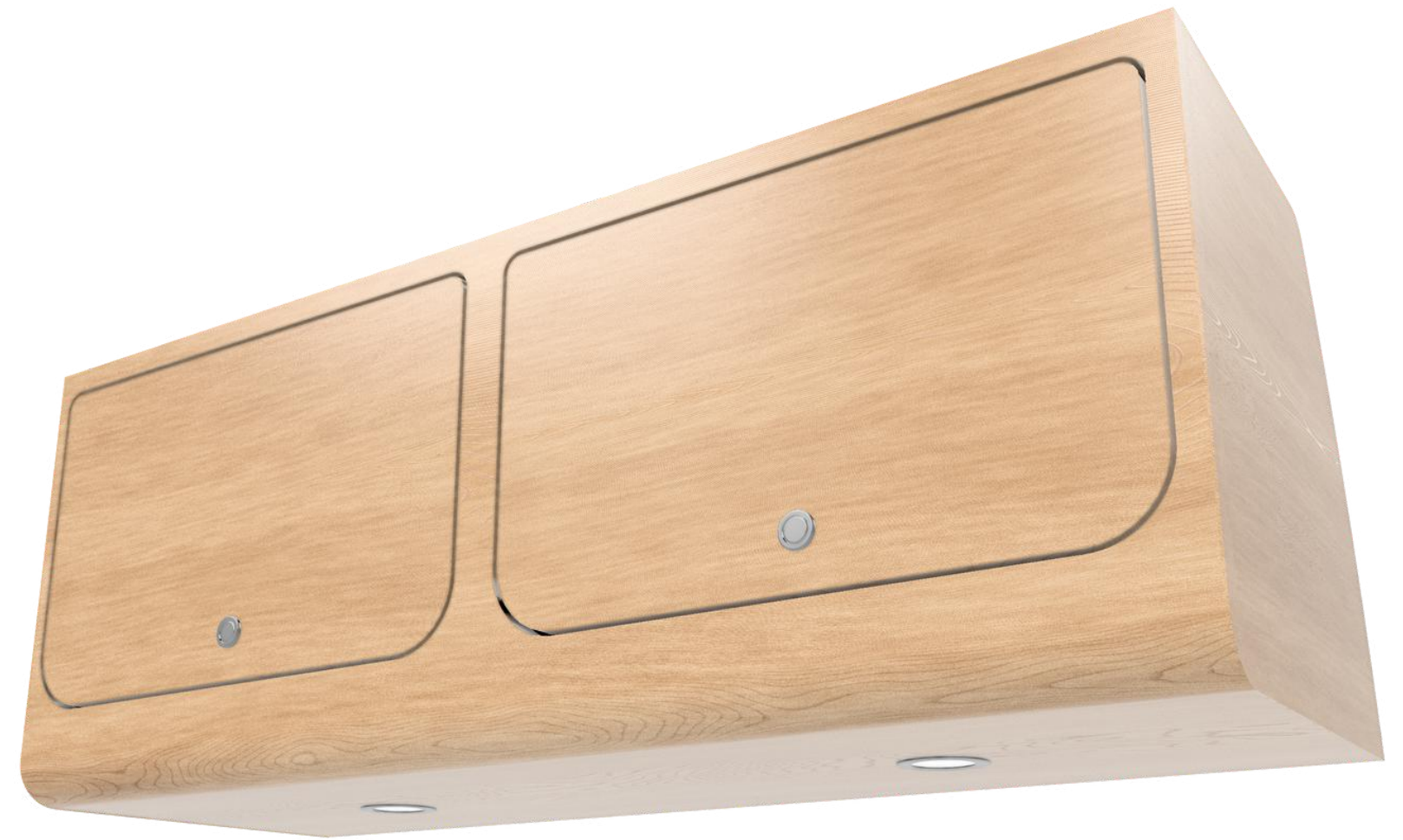


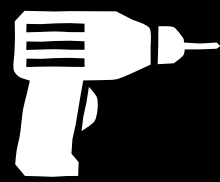
UPPER CABINET

Installation Guide

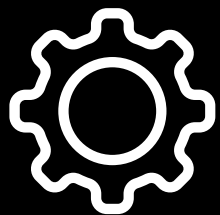
www.sergsupply.com



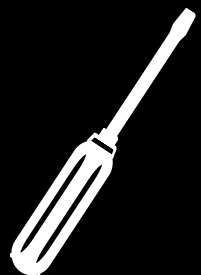
What you will need to get started:



Power Drill
With Phillips Drive



Rivet Nut Tool
With 1/4"-20 Thread Pattern



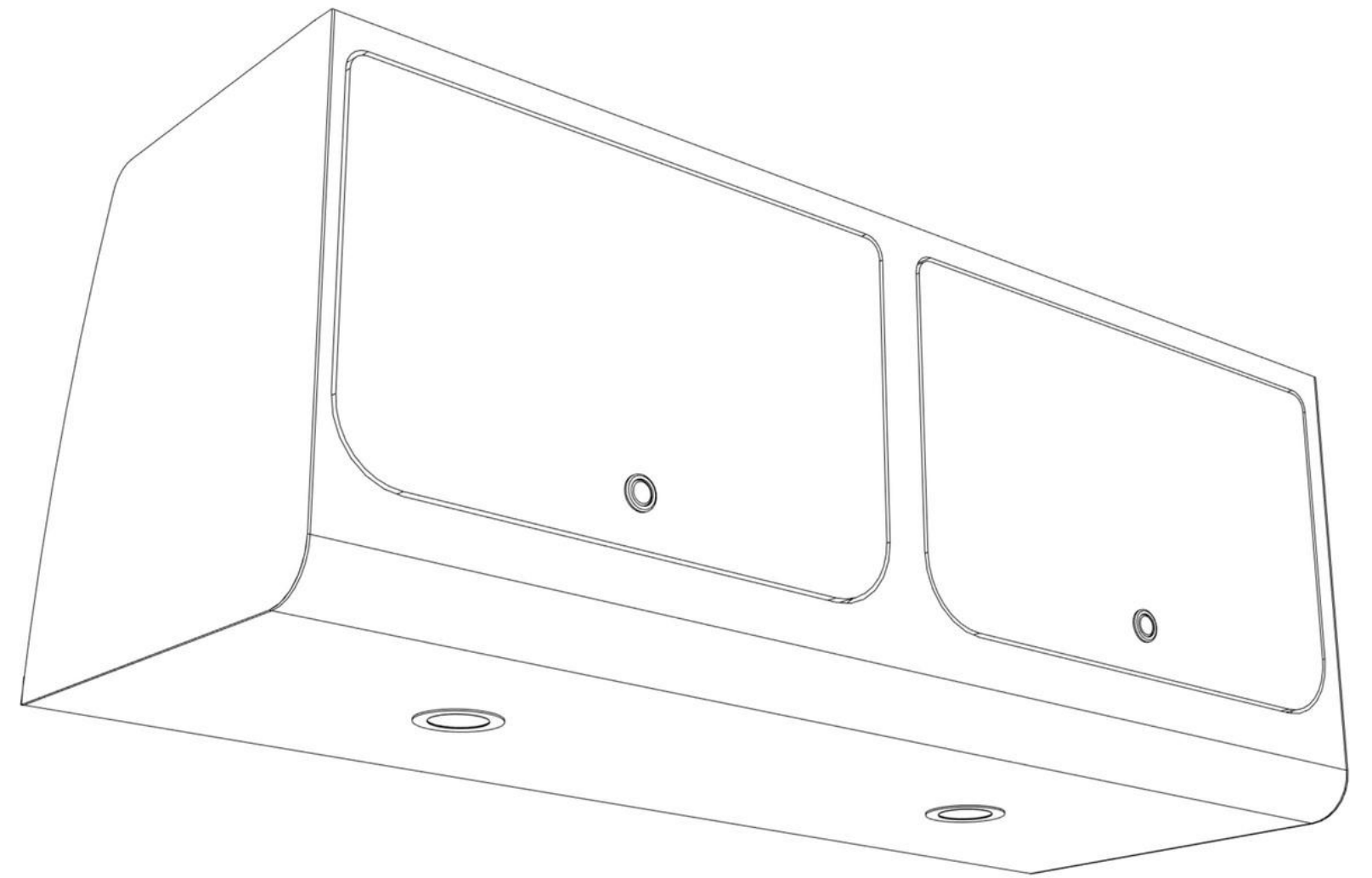
Screwdriver
With Phillips drive

Disclaimer!

This cabinet must be fastened properly to the walls of the vehicle to avoid damage or injury. You are responsible for ensuring that this cabinet is fastened using rivet nuts or other fastening method equal in strength. Modification to this unit may affect the structural strength of the unit. Avoid making large cuts on vehicle partitions or beams as this may weaken the vehicle. You are responsible for ensuring proper wiring and insulation when wiring your build as faulty wiring may create a fire hazard. Any cabinetry or load-bearing components need to be mounted to the vehicle and not to the cabinet alone.

What's Included:

- Rounded Upper Cabinet(s)
- Installation Hardware



Pre-Installation Tips

- Get a helping hand. This installation is dramatically easier with someone to help you out and offer good company.
- You'll need a power drill, 3/8" drill bit, 1/8" drill bit, and a rivet nut tool (1/4"-20 thread).
- There are two routes of installation, **Rivet Nut** or **Sheet Metal screws**.
- Both installation methods work for both rounded and squared upper cabinetry.

Comparing Installation Styles

Rivet Nut Method:

- Harder to install + more tools needed
- Must align with factory holes
- Much higher weight-bearing and lasts much longer
- Cabinets can be removed and reinstalled without mounting points weakening
- Better for resisting rust in moist climates
- Better for offroad adventures

Sheet Metal Screw Method:

- Easier to install
- Can be shot in anywhere that there is a metal beam to tap into
- Requires pre-drilling
- Moderate weight bearing, but sheet metal will loosen over time and require retightening
- Higher likelihood of rust over time

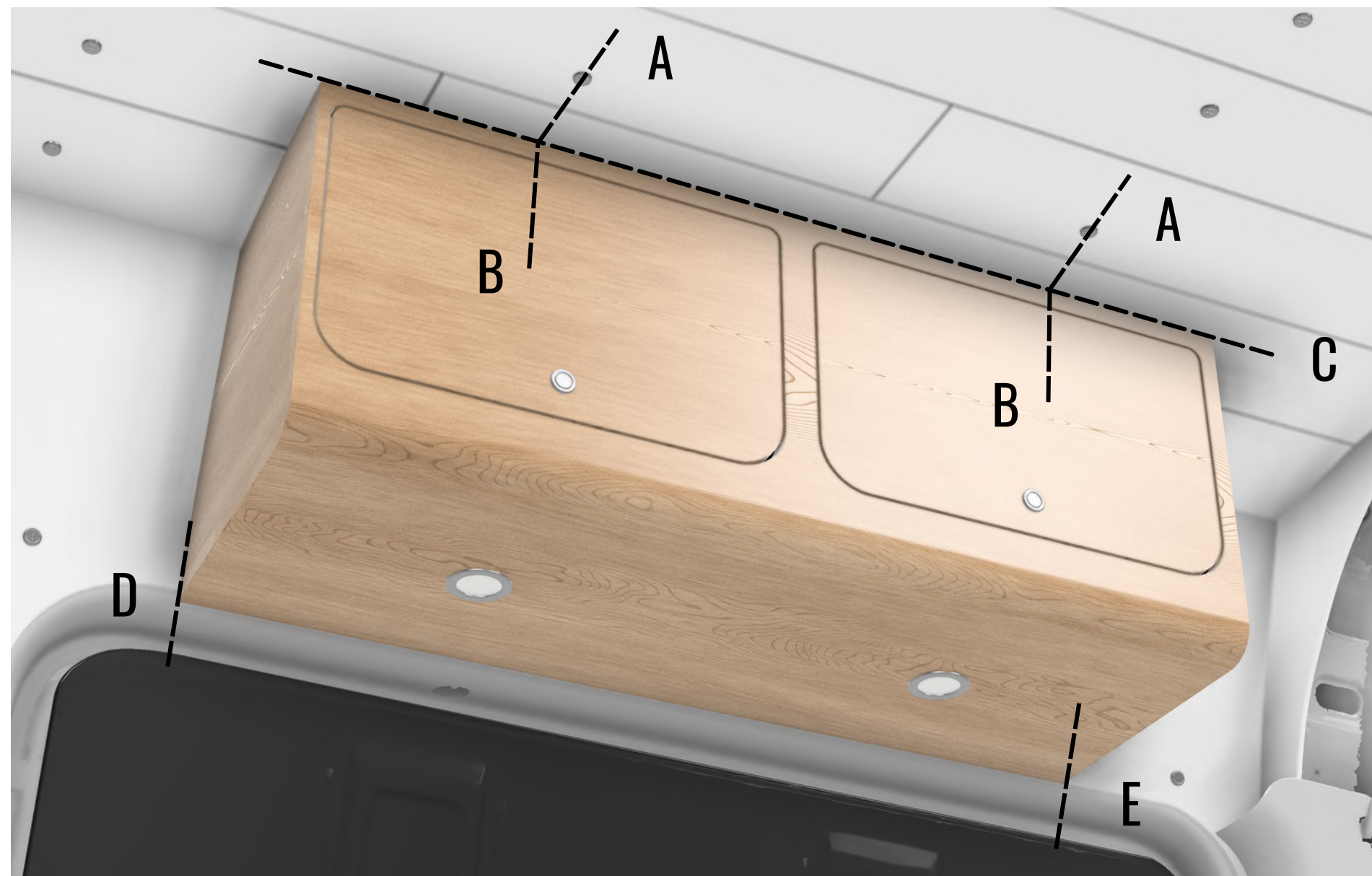
With a Serg-Supply Ceiling/Walls

- Hold the cabinet back up against the wall at your desired position. Take note of which factory holes may be used.
- Remove the ceiling + wall machine screws that will be used for your cabinet installation.
- Discard the 1-1/2" ceiling screws and replace them with the included 2" machine screws + washers
- Thread the screws halfway and leave the cabinet suspended while you partially thread the remaining ceiling screws + wall screws
- Push the cabinet firmly into the wall/ceiling and tighten down the machine screws until firmly fastened.
- Note: Only the top and lower rear stretcher are necessary for firm support. The upper rear is optional.



Mounting on a non-Serg Supply kit

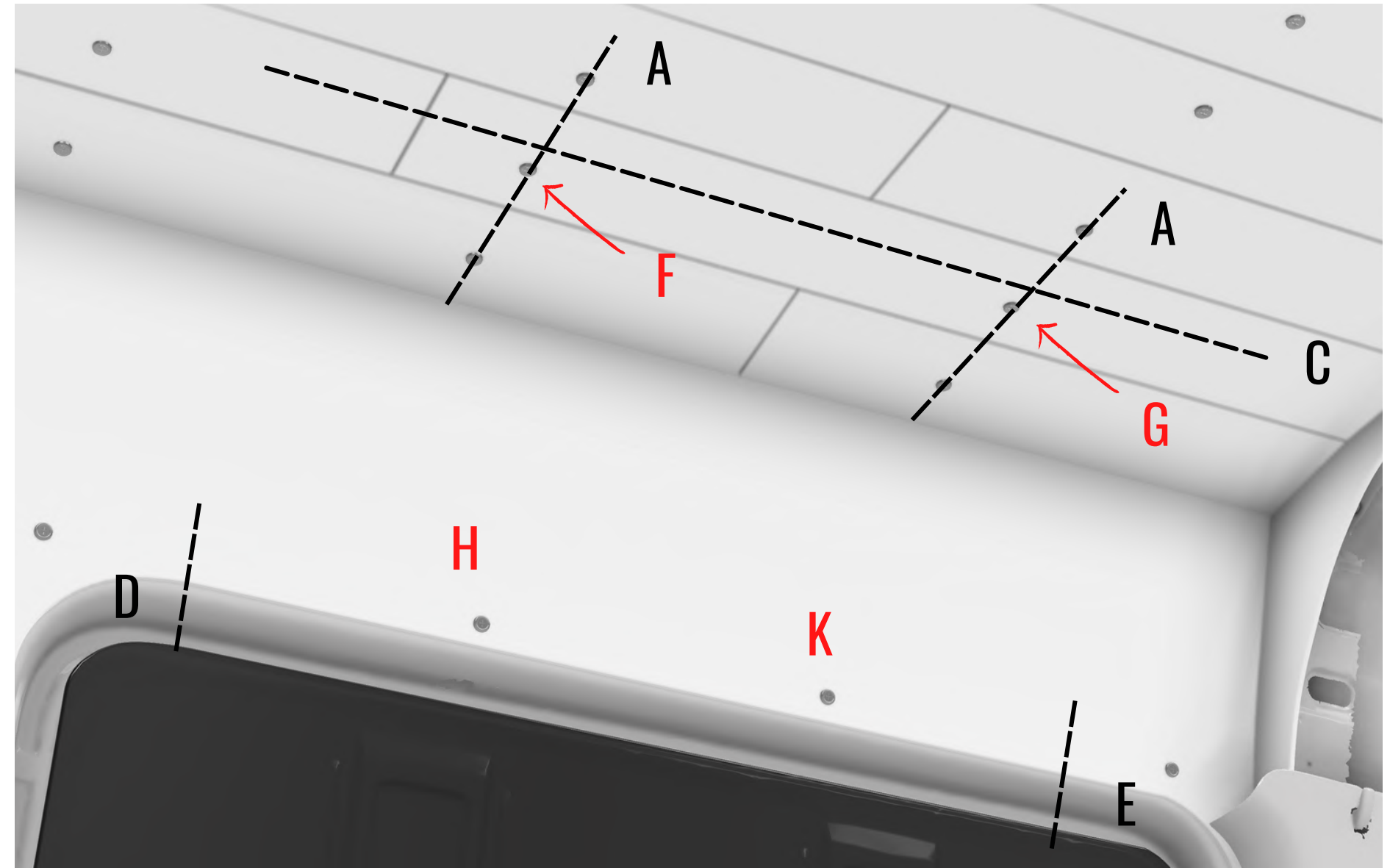
- Push your upper cabinet firmly into the corner of the vehicle such that the curvature of the sidewall lines up flush with your wall paneling.
- Make sure there's no gap behind the cabinet before moving on.
- With the cabinet held in place, make a mark (C) on the **beam (or ceiling)** where the front of the cabinet aligns.
- In the same position, make a tick mark (B) on the face of your cabinet that is along **the center of the beam**.
- Make marks (D) and (E) on the wall to the left and right of the cabinet to indicate the edge of the cabinet relative to the wall.



These overhead cabinets may be mounted on any unobstructed upper corner in your vehicle. It is required to be mounted beneath an overhead beam as at least one screw per 20" section must be attached to a beam. If mounting sections longer than 20", make sure to hit a minimum of one overhead beam per 20" section.

Installing By Rivet-Nuts

- Remove the cabinet and set it aside.
- Find **the nearest** one or more **factory hole** between the Line marked **(C)** and the Wall along the direction by the Lines marked **(A)**.
- Your Tick Mark **(F)** to the center of the first rivet nut and your Tick Mark **(G)** to the center of the second rivet nut (if you have two).
- Your Wall Mark **(H)** and **(K)** to **the closest factory hole** inwards.
- If you don't have factory holes you want to be sure that there is **at least 3 mm of solid metal** that can be drilled into at these sections.
- Use the 5/16" drill bit to bore out the hole and install your rivet nut(s).



NOTE: You may want to acquire a longer drill bit, as the distance from side of the cabinet to wall is approx. 1.5".

Mounting the Cabinet to the Wall:

- Once all ceiling screws are tightened, to insert the machine screws with washers through the 1" oval shaped opening in the back of the cabinet and align them with the rivet nut in the wall.
- Carefully thread the machine screw in place.

Never use power tools to thread these screws on or you may risk cross-threading.

- If you don't have factory holes mark the proper holes with a permanent marker all at once before beginning to drill them out to size with the included drill bit.
- Once all holes are drilled out, begin installing the **Rivet Nuts**. Be sure that the **Rivet Nut** is installed perpendicular to the surface as threading screws in at an angle may cross-thread the rivet nut.



With a Serg-Supply Ceiling/Walls

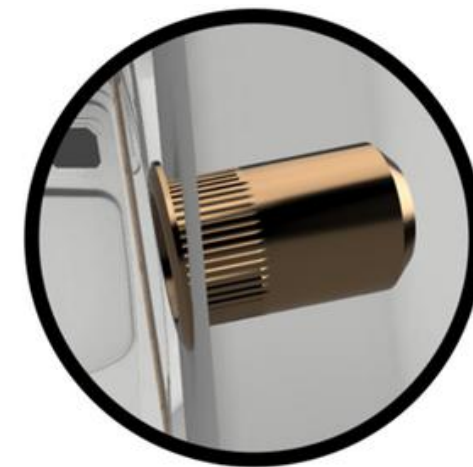
- Hold the cabinet back up against the wall along your marked boundaries.
- You should be able to insert the machine screws with washer through the 1" oval shaped opening from inside the cabinet and align it with the **Rivet Nut**.
- Carefully thread the machine screw in place.

Never use power tools to thread these screws on or you may risk cross-threading.

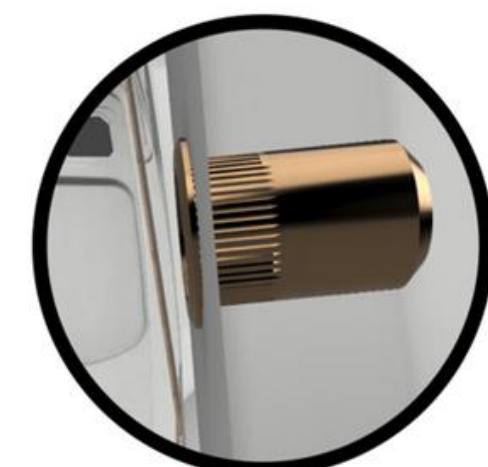
- If you don't have factory holes mark the proper holes with a permanent marker all at once before beginning to drill them out to size with the included drill bit.
- Once all holes are drilled out, begin installing the **Rivet Nuts**. Be sure that the **Rivet Nut** is installed perpendicular to the surface as threading screws in at an angle may cross-thread the rivet nut.



Rivet Nuts & Proper Threading



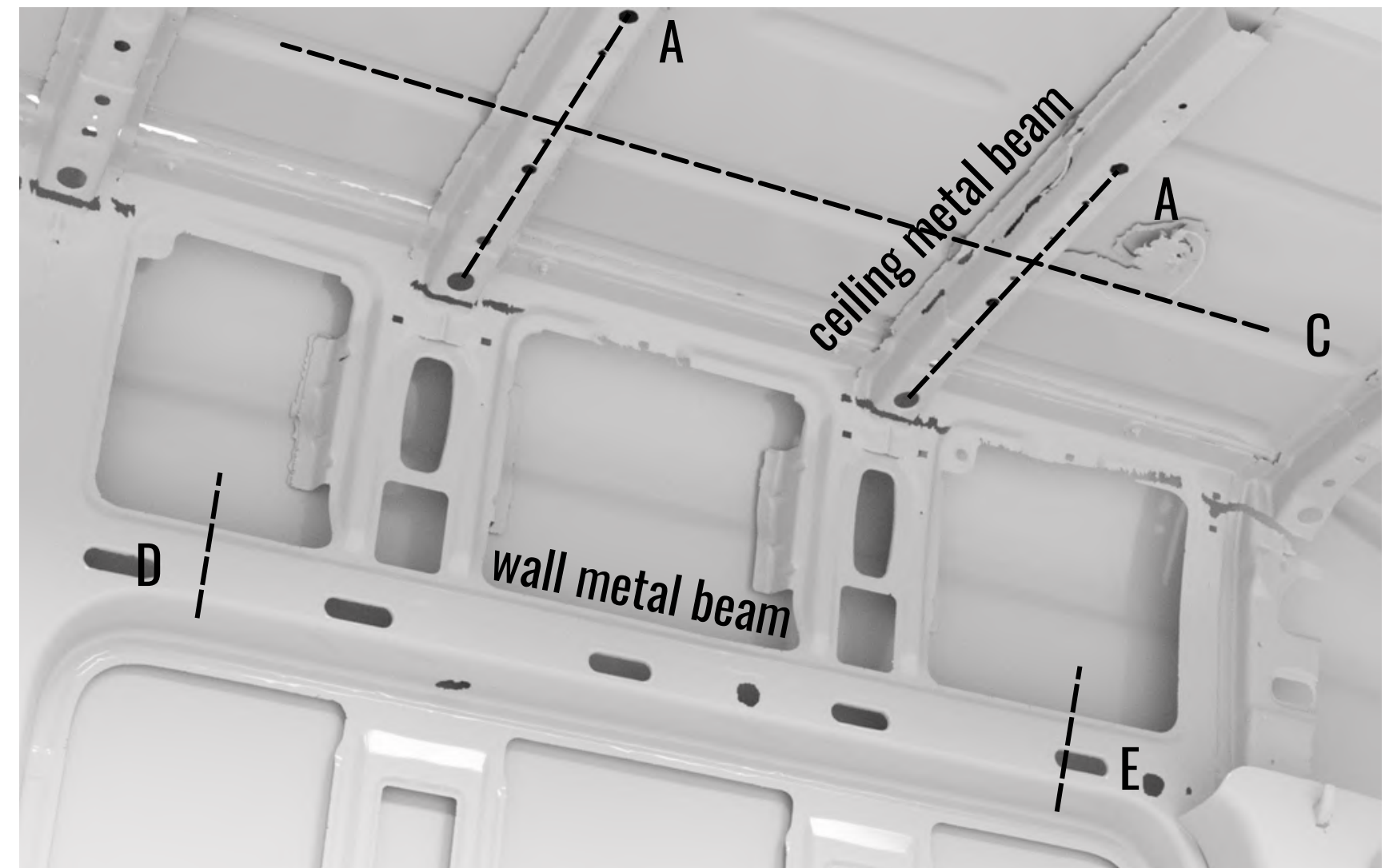
Improper Angle



Proper Angle

Installing by Sheet Metal Screws:

- Set the cabinet aside and locate 2-3 spots per beam of solid metal with no factory holes.
- Grab the sheet metal screws, hold them beside the beam, and first verify that they are not too long and will not go through the ceiling of the vehicle.
- Drill a 1/8" pilot hole through the oval shaped opening in the top of the cabinet into the metal beam while pushing the cabinet firmly against the ceiling to close any gaps.
- **Be sure that the pilot hole is only 1/8".**
- Screw the 2" sheet metal screws in partially before lifting the cabinet into position. Once in position, drive the screws through the cabinet ceiling into the beams.
- **Do Not Overtighten as this will mangle the sheet metal and the screw will not support any weight.**



- Once all ceiling screws are tightened, drill a 1/8" pilot hole through the oval shaped opening in the back of the cabinet and into the metal beam behind **while pushing the cabinet firmly against the wall to close any gaps.**
- Drive a 2" sheet metal screw into the piloted holes to pull the cabinets to the wall without over-torquing them.

Note:

- You may want to acquire a longer drill bit, as the distance from inside of cabinet to wall is approx 1.5"
- Before final installation, you can help fight rust by coating the pre-drilled holes.
- **This installation method is not recommended for rough or offroad use.** If you plan on taking your vehicle onto bumpy terrain, install using **Rivet Nuts.**