



# TRANSIT 148" CEILING KIT

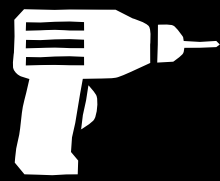
---

Installation Guide

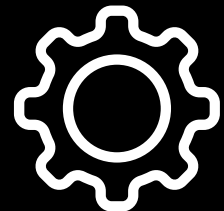
[www.sergsupply.com](http://www.sergsupply.com)



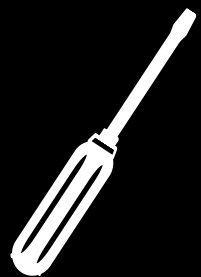
What you will need to get started:



**Power Drill**  
With Phillips Drive



**Rivet Nut Tool**  
With 1/4"-20 Thread Pattern



**Screwdriver**  
With Phillips drive

## **Disclaimer!**

This cabinet must be fastened properly to the walls of the vehicle to avoid damage or injury. You are responsible for ensuring that this cabinet is fastened using rivet nuts or other fastening method equal in strength. Modification to this unit may affect the structural strength of the unit. Avoid making large cuts on vehicle partitions or beams as this may weaken the vehicle. You are responsible for ensuring proper wiring and insulation when wiring your build as faulty wiring may create a fire hazard. Any cabinetry or load-bearing components need to be mounted to the vehicle and not to the cabinet alone.

---

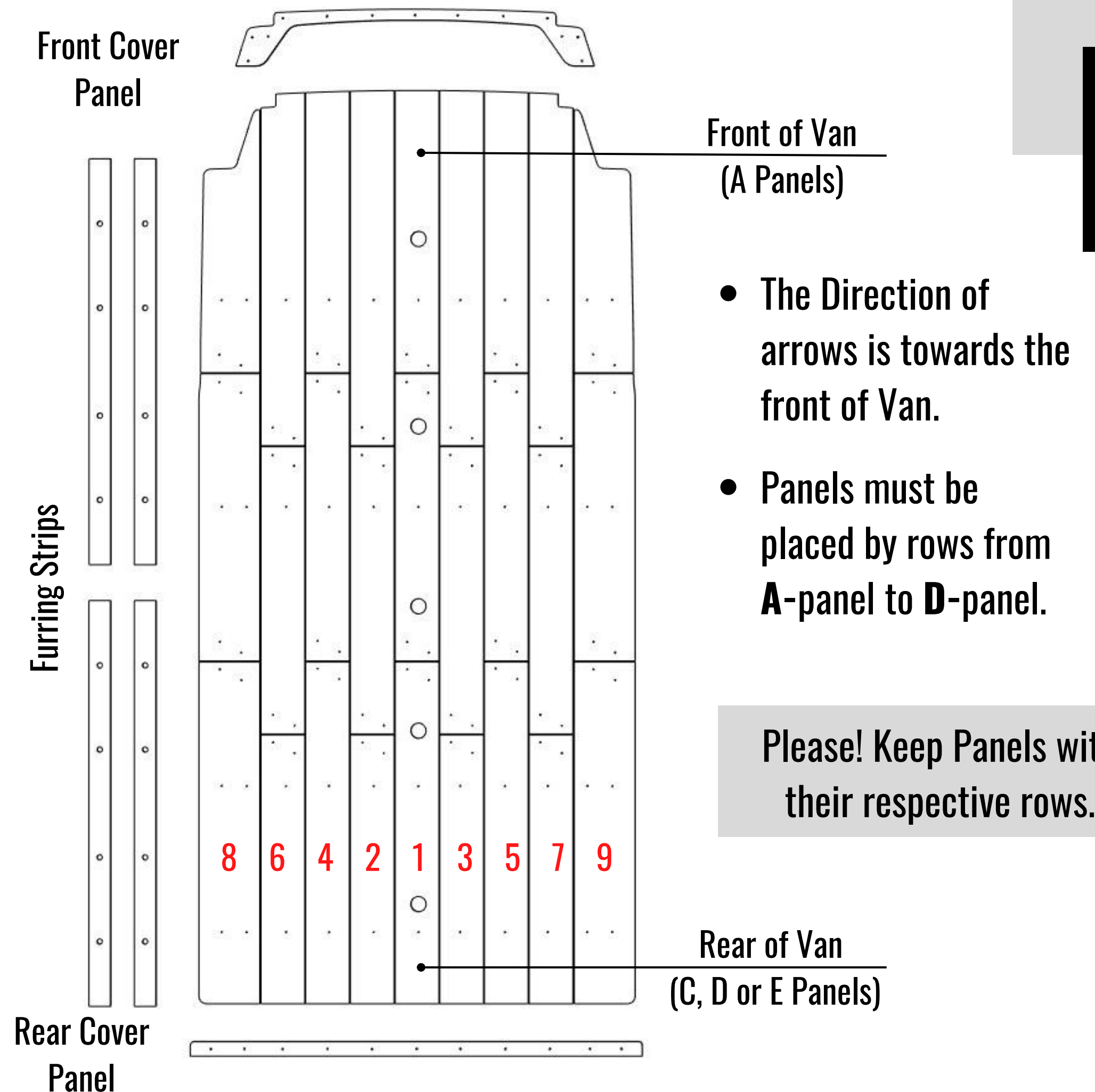
## What's Included:

- Ceiling Panels
- Installation Hardware

## Layout:

This kit uses a row-by-row method that makes installation easier.

- Unpack all the ceiling Panels. Please note they are packaged by row (1-9).
- Look at the illustration for placement.



# Pre-Installation Notes

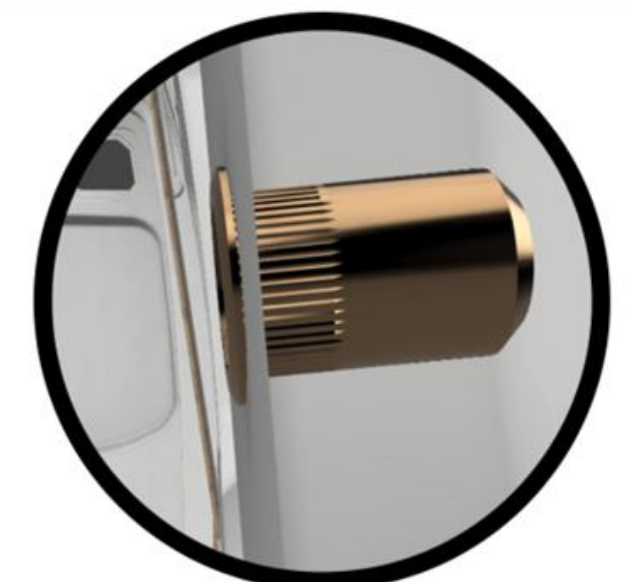
- The illustration on the previous page is for the 148" WB. While mounting process is identical for the 148" EXT, the number of overhead beams and length of paneling changes. Follow the same process outlined in this guide for proper installation.
- The rivet nut placement is specifically designed to give you flexibility on mounting screw placement. You can always add more screws to your ceiling panels than those included with your kit.

## Rivet Nuts & Proper Threading

- Mark the proper holes with a permanent marker all at once before beginning to drill them out to size with the included drill bit.
- Be very careful not to apply too much pressure and keep the drill at low speed to avoid damaging the outer shell of your vehicle. The drill bit tends to catch the metal and slam the bit into the ceiling of the van. If you're not careful.
- Once all holes are drilled out, begin installing the rivet nuts. Be sure that the rivet nut is installed perpendicular to the surface as threading screws in at an angle may cross-thread the rivet nut.



Improper Angle



Proper Angle

### **NOTE:**

**Rivet nut size is specifically chosen to match the opening size of the rectangular slots in your ceiling – drilling may not be necessary for beams.**





Improper Angle



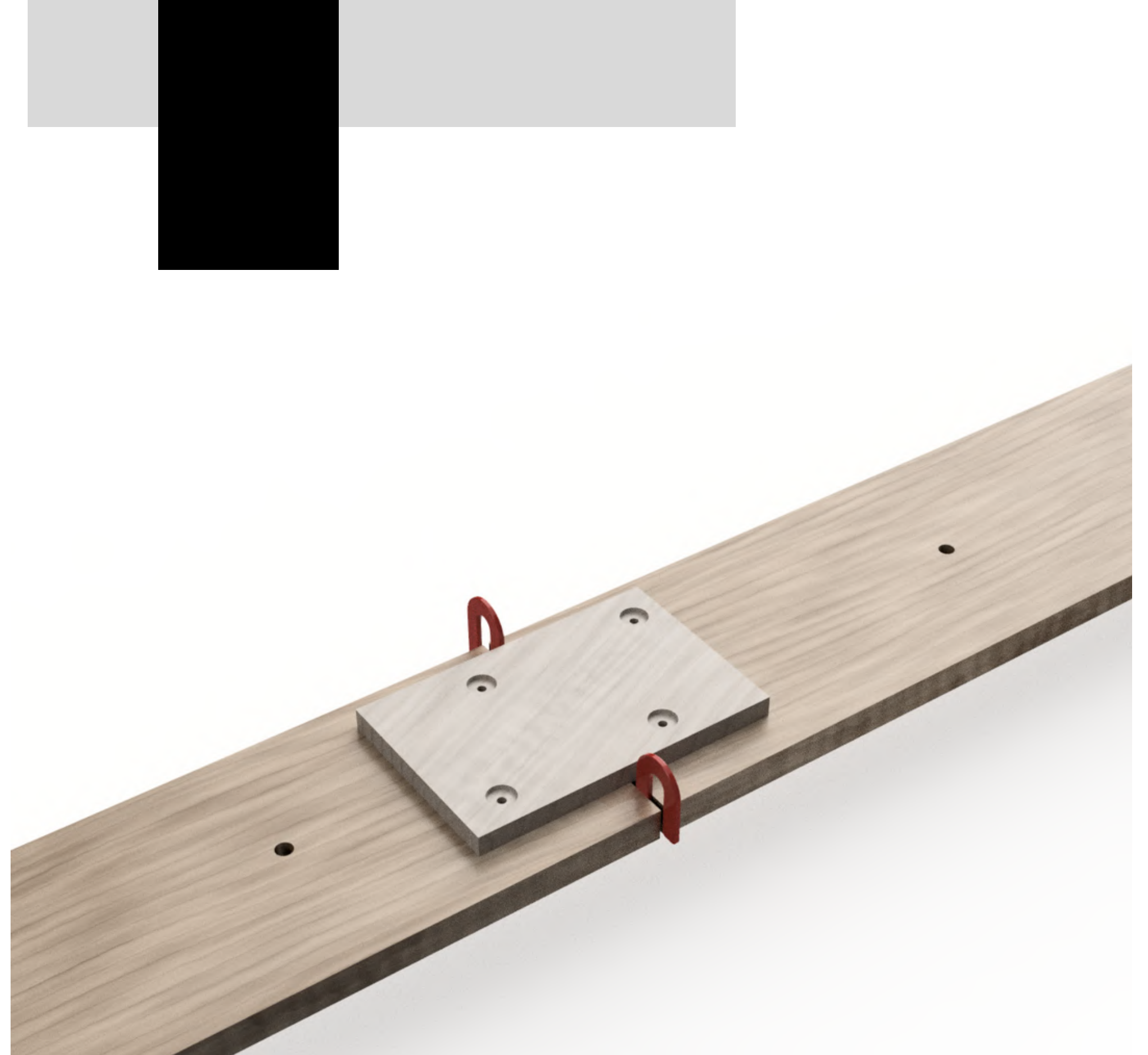
Proper Angle

- Take extra care to ensure the screw is threaded straight and not at an angle. Threading the screw at any angle may cross thread the rivet nut.
- Once all rivet nuts are installed, begin threading on your ceiling screws with a screwdriver.  
**Never use power tools to thread machine screws.**
- Always use finish washers when doing final installation. These act to cover any re-sized holes and prevent the screws from loosening over time.
- The panels are designed to fit factory holes throughout the vehicle. Line up the panel up against the area it covers to approximate the holes you'll need to apply rivet nuts into.

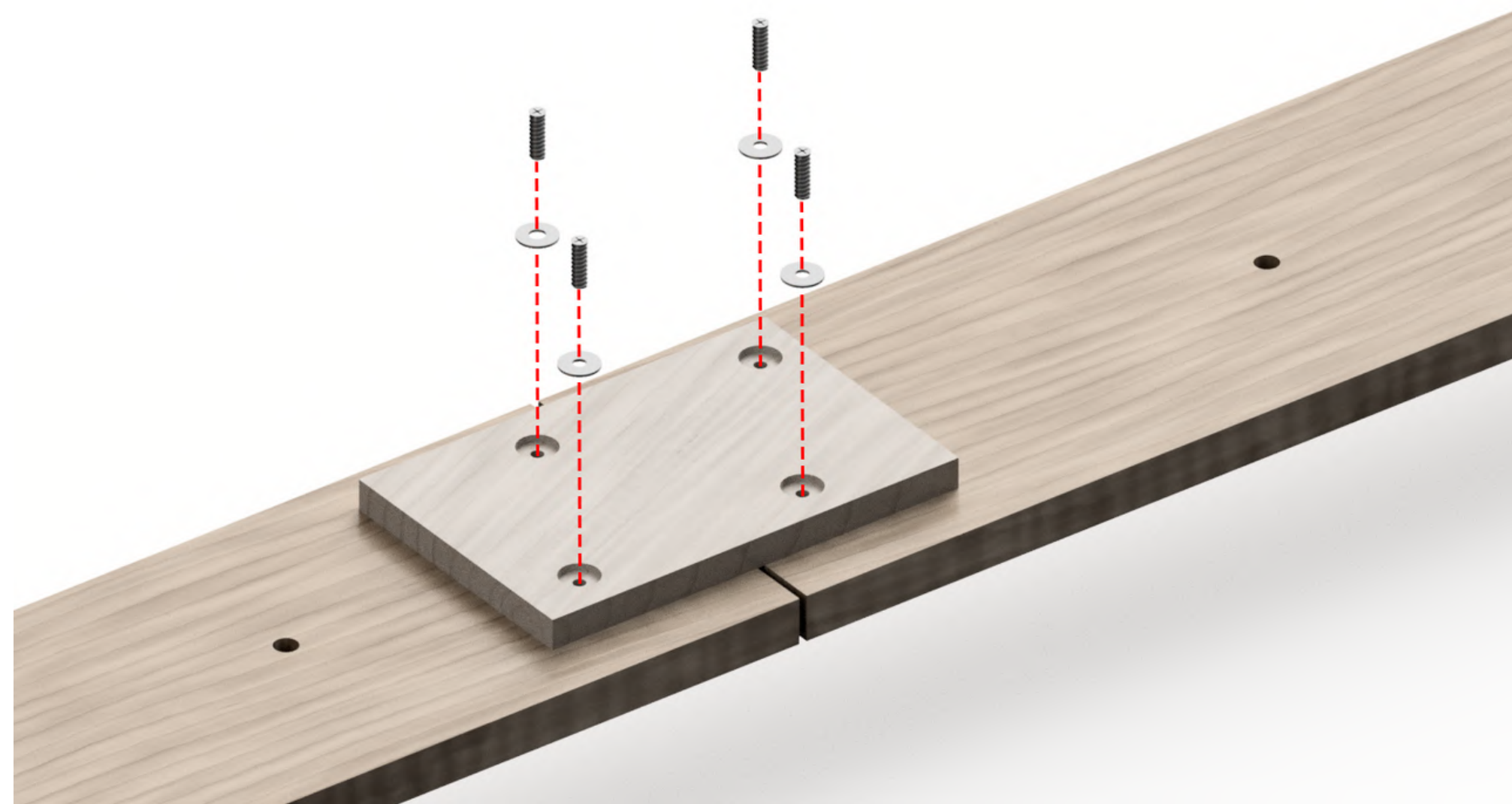
## Assembling Rows:

This kit uses a row-by-row method that makes installation easier. You will begin by assembling the A-D panels into 9 continuous rows.

- The Face with label and direction carving goes up towards the ceiling.
- The Direction with arrows is towards the front.
- Start by laying down row 1 on a clean and flat surface. With the arrows all pointing in the proper direction, place panel 1A and 1B up against one another.
- Place your shim between the ends of the panels (from side to side) and fetch a union panel with (4) union screws and (4) washers.



- Place the union panel on top of the joint and align your 4 wood screws.
- Double check alignment and spacing before fastening.
- Repeat this process for the 3rd and 4th panel (A or D) until the row is complete.
- Continue this process until all 9 rows have been assembled.





## Installing Furring Strips

- The furring strips are all identical with four holes. It is easiest to install the center holes first to bend the furring strip before installing the outside holes.
- Once all rivet nuts are installed, you can begin to install the furring strips.
- Use your 1" screws along with a washer to install the screws in the pre-drilled slots.
- Before tightening all the way down on any screws, make sure the screws do not hit the ceiling. If they contact the ceiling, Stop, and contact us immediately.
- Use your hands to tighten these carefully. They may cross thread and strip if you use power tools.



## Aligning The Center Row

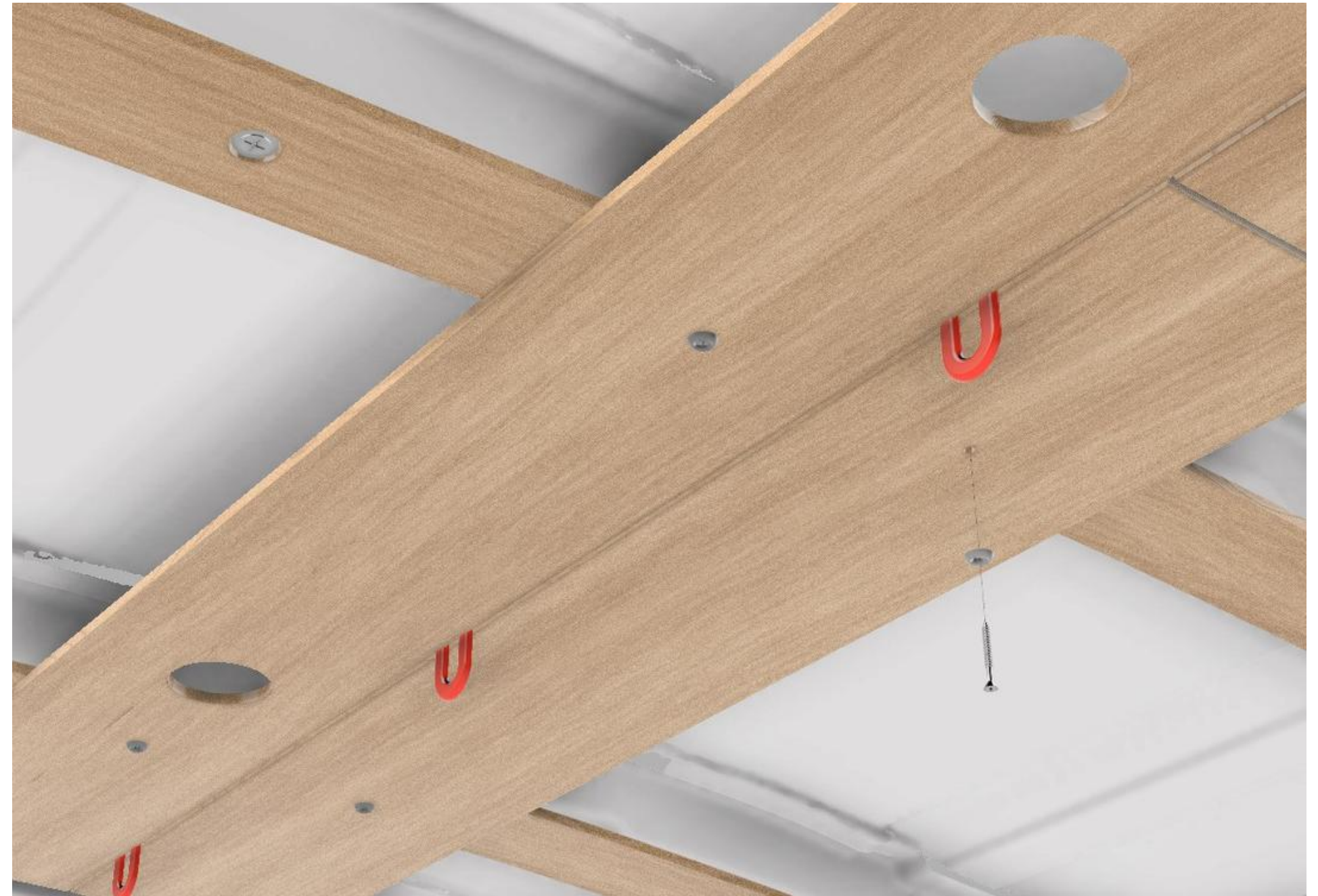
- The holes on the overhead trusses don't always land in the same place from van to van, so it's crucial that you use the ridge running the length of the van along the center to center the panel.
- Once all rows are assembled, start with Row 1 by flipping it such that the union panels are facing up towards the ceiling.
- Start installation by having a friend hold the Row 1 up with you and align the panel along the center of the vehicle.
- Shoot a screw through the pre-drilled hole and fasten the panel to the furring strips.





## Install Remaining Rows

- Set the second row in place the union panels facing upwards and make sure a shim is wedged between row 1 and 2.
- Once panels are snug against the shims, use the ceiling mounting screws to fasten this row in place.
- Continue until all rows are fastened to the furring strips.
- Install Rows 3-9 in the same manner, maintaining proper spacing between each.

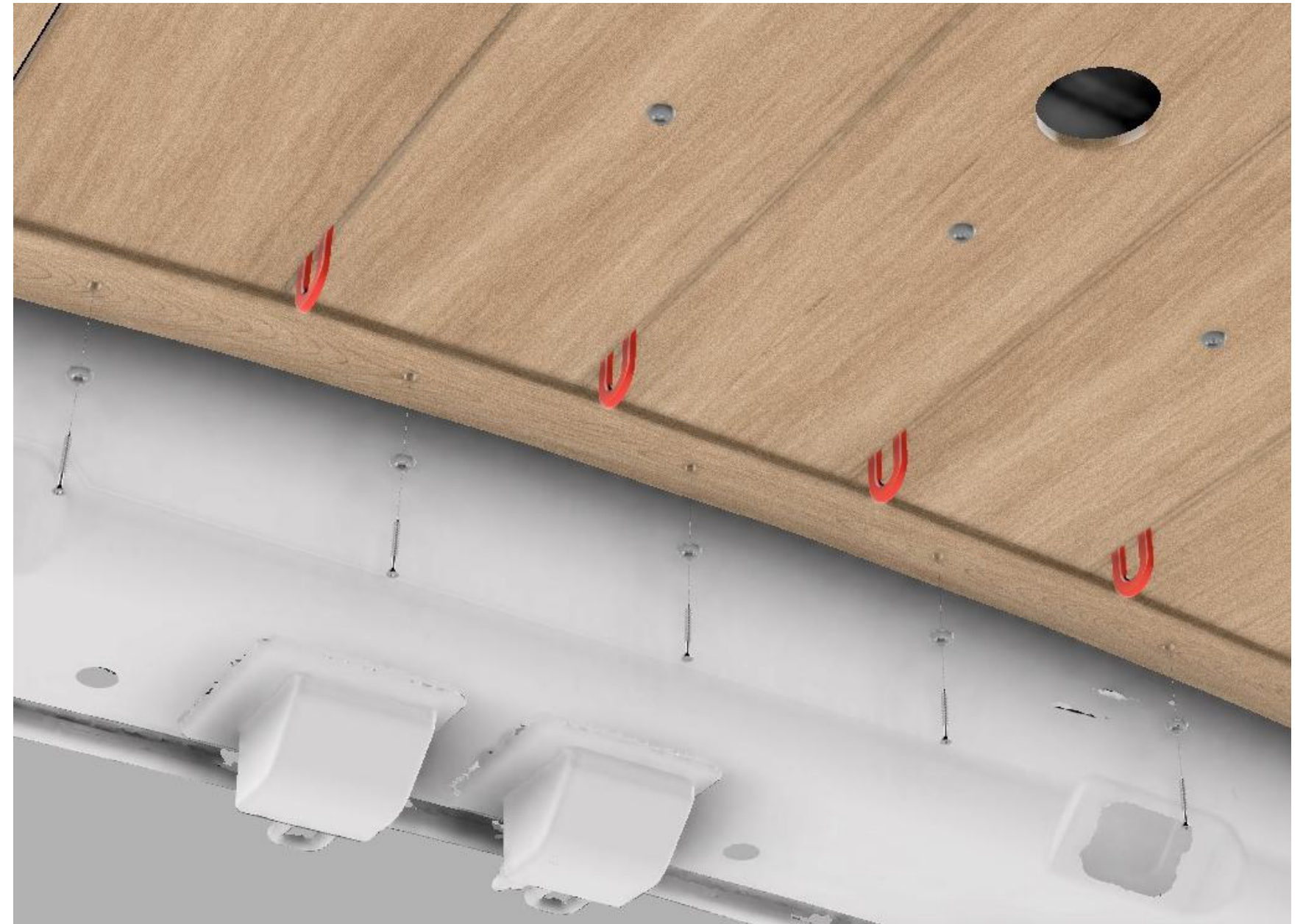


## Cover Panels

- Align the center of the rear cover panel with the center of row 1. With the outer edges flush, you can drive in the center screw with a power drill.
- Insert your shims between each row for perfect spacing before continuing.
- Work your way from the center row outwards in both directions

### Note on Row 8 & 9:

- The front cover panel does not attach to these rows, and they will sit significantly higher than the other panels.
- Use the two spacer blocks included with your kit to bring these rows down to the right height.



- Have a helping hand pry the panel ends down as you slide the spacer in place.
- Once in place, use the extra ceiling screws to fasten the spacer to Rows 8 & 9.



## Ceiling Fan Cutouts

- If you purchase a ceiling kit with a pre-cut fan opening, installation will only differ in union panel placement if the fan lands on a gap between panels.
- If you have a "floating" panel A or D, the union panel holes will be oriented sideways to join the floating panels to Rows 2 and 3.
- You will need to install Rows 1-3 at the same time. Get a helping hand to prevent damaging the rows.

## Medium Roof Models

- Medium roof model Sprinters are similar installation methods, but with an additional row on each end. You will notice Rows 10 and 11 which are to be installed in the same method as 1-9.
- The Extended model Transit has identical mounting aside from an additional length of paneling in the rear



## Lighting and Wiring

The beauty of row-by-row installation method is the ease of running wiring. You may loosen or remove the screws on a single row for an easier time feeding wiring through your ceiling.

- It is not advised to constantly remove and reinstall your panels. This may weaken the hold of the wood screws and additional fasteners will be needed to reinforce the mounting point.
- If you must replace the screws, the sturdier method is to use stud anchors into the furring strips.
- Install puck lights by feeding wiring from the outside and pushing the puck light into place. The springs on the back will lock it in place.
- Each puck light set comes with a ballast that can be wired to your 12V power supply or dimmer.

## Final Step

- Enjoy your kit and go adventure!
- Send us a photo or tag us on Instagram @sergsupply, we'd love to see your build!