

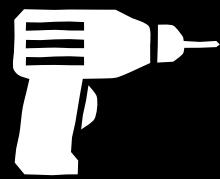
SPRINTER 144" CEILING KIT

Installation Guide

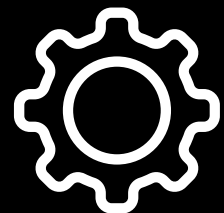
www.sergsupply.com



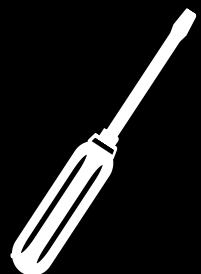
What you will need to get started:



Power Drill
With Phillips Drive



Rivet Nut Tool
With 1/4"-20 Thread Pattern



Screwdriver
With Phillips drive



Disclaimer!



This cabinet must be fastened properly to the walls of the vehicle to avoid damage or injury. You are responsible for ensuring that this cabinet is fastened using rivet nuts or other fastening method equal in strength. Modification to this unit may affect the structural strength of the unit. Avoid making large cuts on vehicle partitions or beams as this may weaken the vehicle. You are responsible for ensuring proper wiring and insulation when wiring your build as faulty wiring may create a fire hazard. Any cabinetry or load-bearing components need to be mounted to the vehicle and not to the cabinet alone.

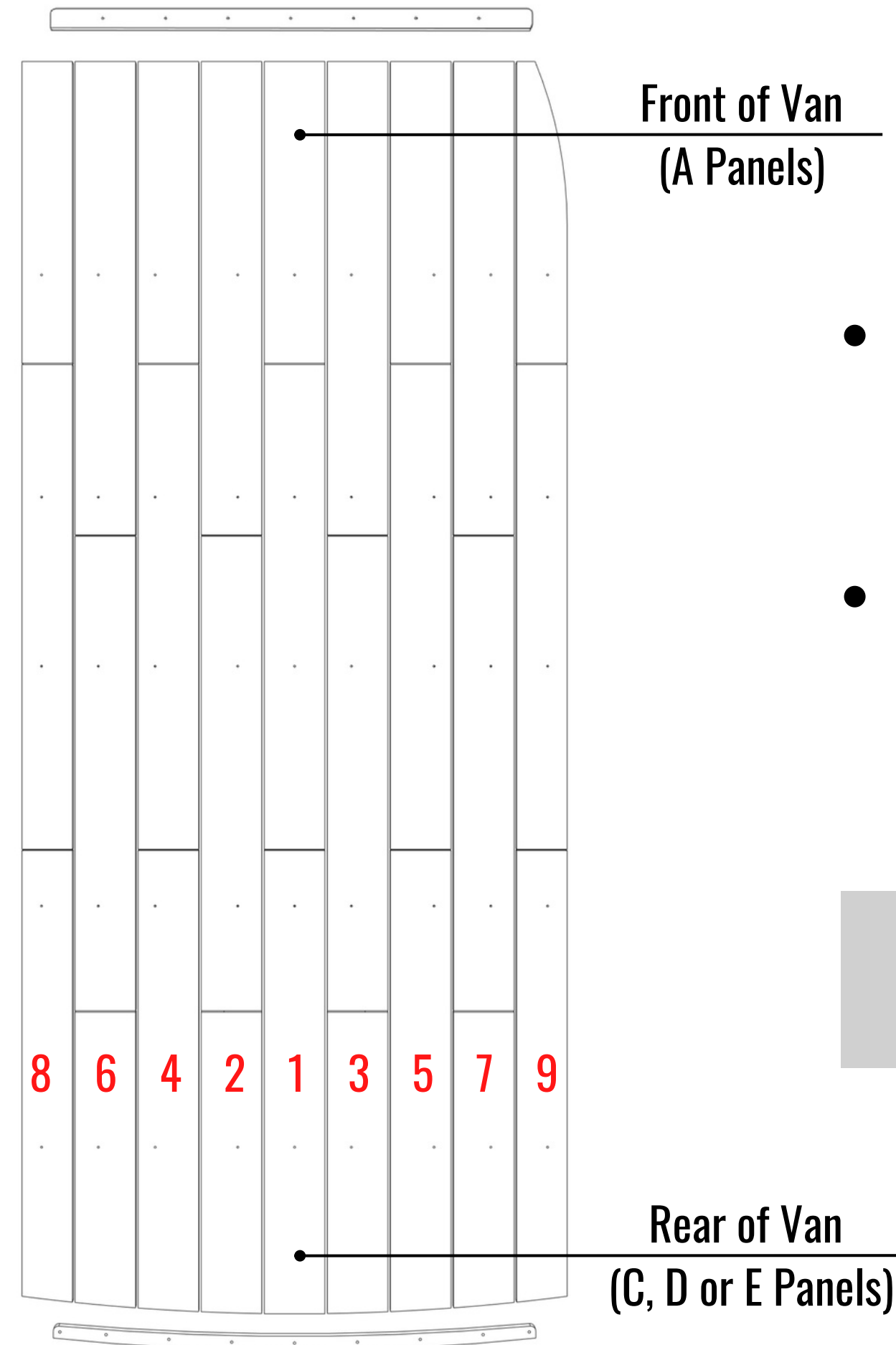
What's Included:

- Ceiling Panels
- Installation Hardware

Layout:

This kit uses a row-by-row method that makes installation easier.

- Unpack all the ceiling Panels. Please note they are packaged by row (1-9).
- Look at the illustration for placement.



- The Direction of arrows is towards the front of Van.
- Panels must be placed by rows from **A**-panel to **D**-panel.

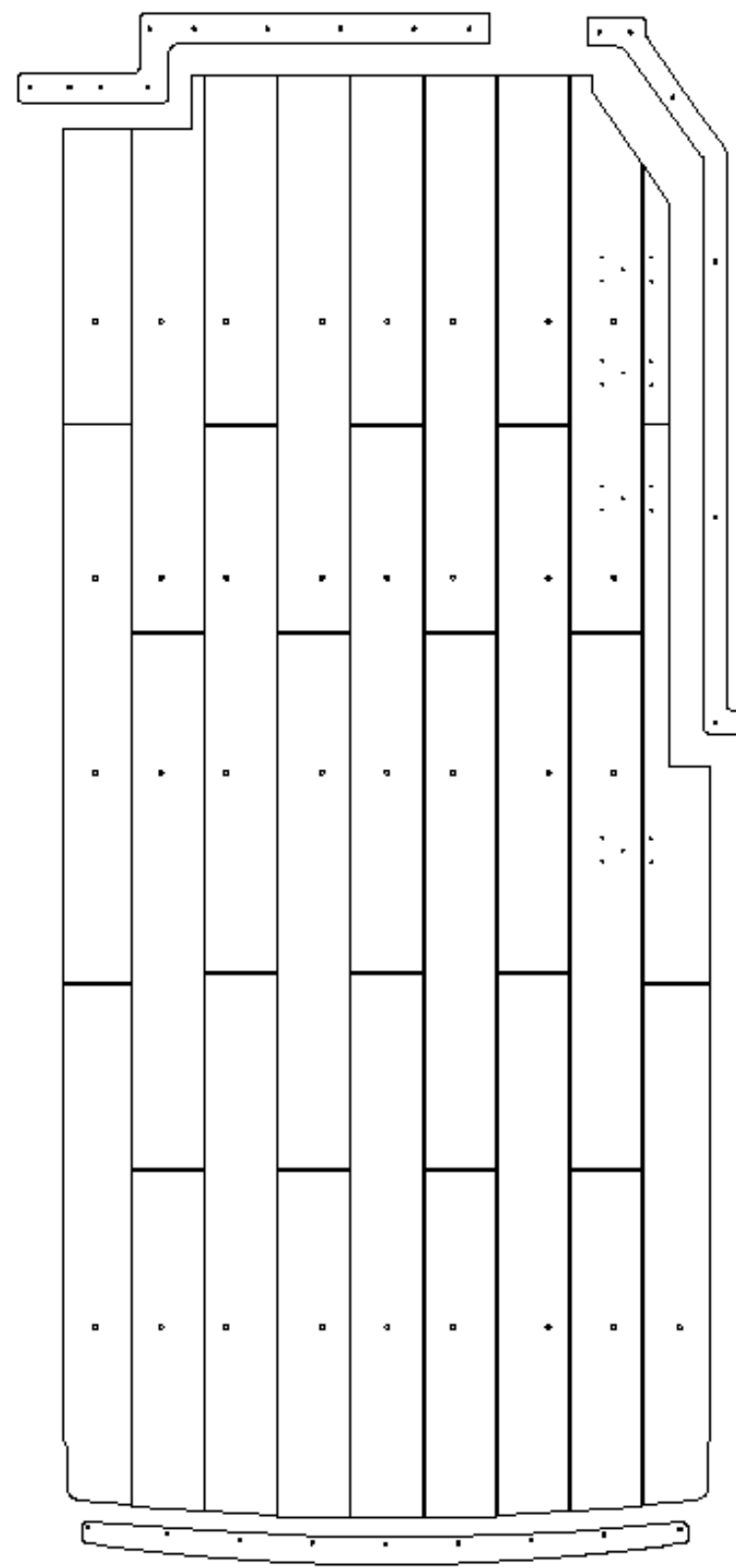
Please! Keep Panels with their respective rows.

GoCode Trim Kit

If you've purchased a GoCode Trim kit with your ceiling kit, you must install this trim kit **first**.

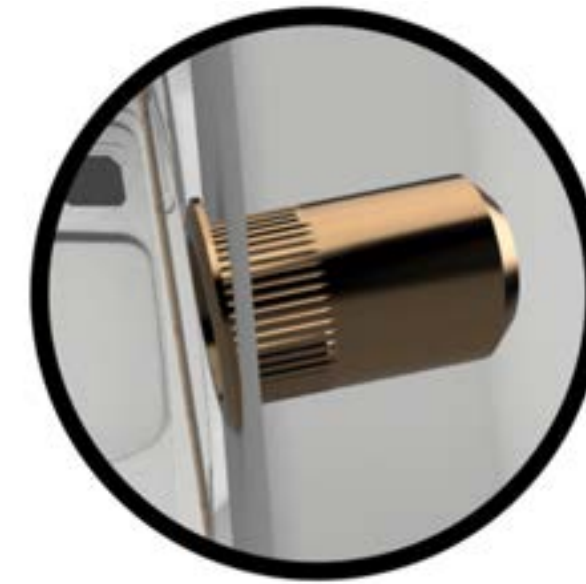
Note on Slider Rows:

While the standard ceiling kit is mounted row-by-row, the outer rows 7 and 9 must be joined with the smaller 5-point union panels included. Prior to installation to your ceiling.

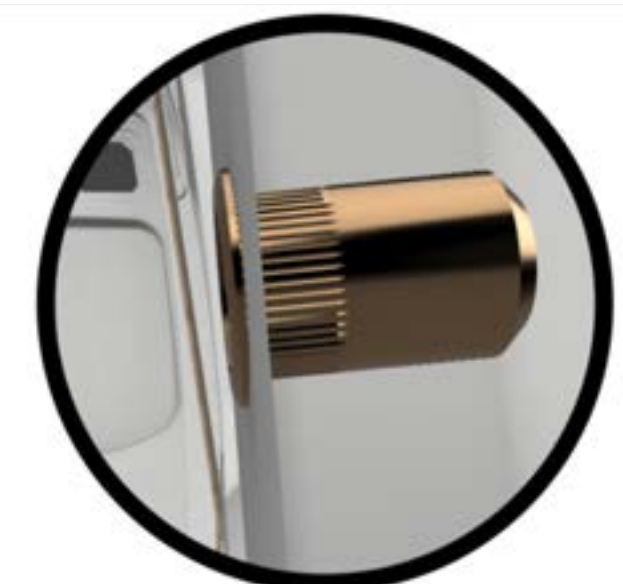


Rivet Nuts & Proper Threading

- Mark the proper holes with a permanent marker all at once before beginning to drill them out to size with the included drill bit.
- Be very careful not to apply too much pressure and keep the drill at a low speed to avoid damaging the outer shell of your vehicle if using any tool other than a Step bit. A drill bit tends to catch the metal and slam the bit into the sidewall of the van if you're not careful.
- Once all holes are drilled out, begin installing the rivet nuts. Be sure that the rivet nut is installed perpendicular to the surface as threading screws in at an angle may cross-thread the rivet nut.



Improper Angle



Proper Angle

NOTE:

Rivet nut size is specifically chosen to match the opening size of the rectangular slots in your ceiling – drilling may not be necessary for beams.



Improper Angle



Proper Angle

- Take extra care to ensure the screw is threaded straight and not at an angle. Threading the screw at any angle may cross thread the rivet nut.
- Once all rivet nuts are installed, begin threading on your ceiling screws with a screwdriver.
Never use power tools to thread machine screws.
- Always use finish washers when doing final installation. These act to cover any re-sized holes and prevent the screws from loosening over time.
- The panels are designed to fit factory holes throughout the vehicle. Line up the panel up against the area it covers to approximate the holes you'll need to apply rivet nuts into.

- Every beam on the Sprinter 144" is identical. Reference the sketch on this page for an understanding on which holes will serve as mounting points.

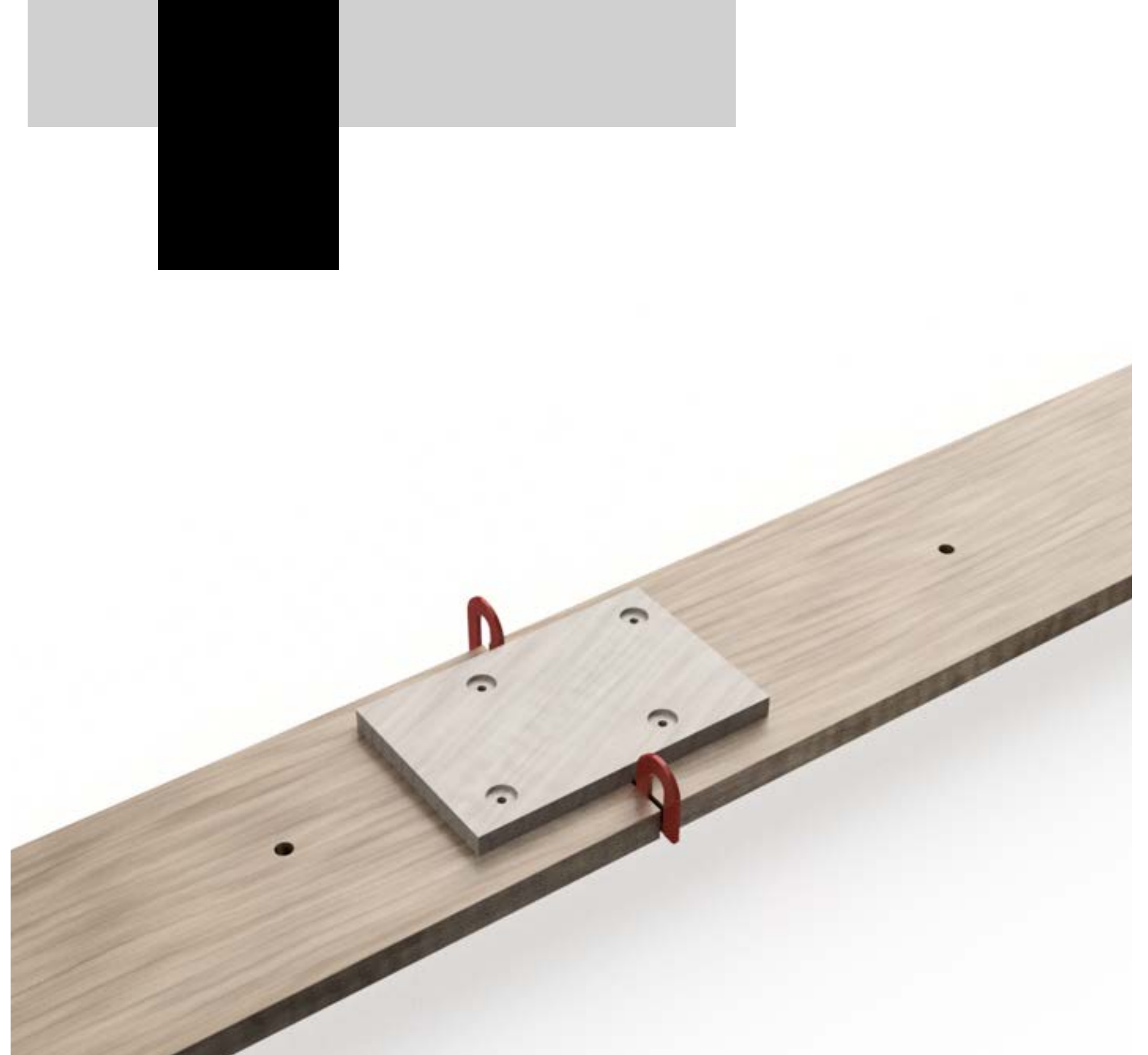


Blue - Holes used to mount panels

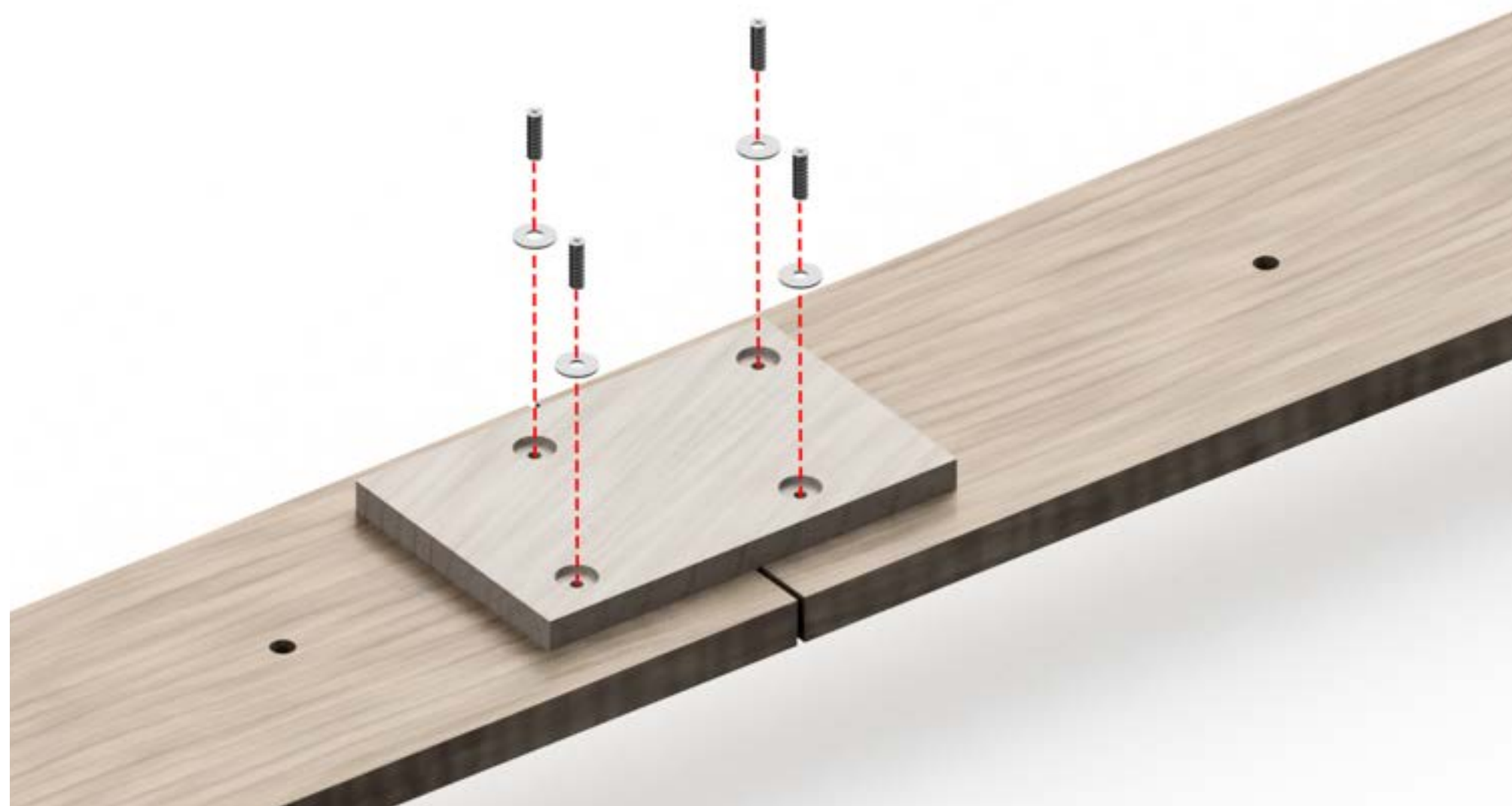
Assembling Rows:

This kit uses a row-by-row method that makes installation easier. You will begin by assembling the A-D panels into 9 continuous rows.

- The Face with label and direction carving goes up towards the ceiling.
- The Direction with arrows is towards the front.
- Start by laying down row 1 on a clean and flat surface. With the arrows all pointing in the proper direction, place panel 1A and 1B up against one another.
- Place your shim between the ends of the panels (from side to side) and fetch a union panel with (4) union screws and (4) washers.



- Place the union panel on top of the joint and align your 4 wood screws.
- Double check alignment and spacing before fastening.
- Repeat this process for the 3rd and 4th panel (A or D) until the row is complete.
- Continue this process until all 9 rows have been assembled.



Installing Your Panels:

- Once all rows are assembled, start with Row 1 by flipping it such that the union panels are facing up towards the ceiling.
- Start installation by having a friend hold the first row up with you and align the panel along the center of the vehicle.
- Thread a ceiling screw with washer into the rivet nut installed on the ceiling along the entire Row 1 panel.



Ceiling Kit Installation - Sprinter 144"

- Move onto Row 2 by holding the row up against Row 1. Lightly thread all the screws before shimming.
- Before tightening down a screw all the way, slip a shim between Row 1 and 2 for perfect spacing.
Tighten the first screw and repeat this process for the rest of the screws.
- Install Rows 3-9 in the same manner, maintaining proper spacing between each.



Cover Panels:

Once all ceiling panels are installed, you can install the front and rear cover panels.

- Align the center of the cover panel with the center of Row 1. With the outer edges flush, you can drive in the center screw with a power drill.
- Insert your shims between each row for perfect spacing before continuing.
- Align the outer row edges (Row 8 and 9) and drive the screws in place.
- Work your way from the center row outwards in both directions until all cover panels are installed before removing the shims.



Ceiling Fan Cutouts:

- If you purchase a ceiling kit with a pre-cut fan opening, installation will only differ in union panel placement if the fan lands on a gap between panels.
- If you have a "floating" panel A or D, the union panel holes will be oriented sideways to join the floating panels to Rows 2 and 3.
- You will need to install Rows 1-3 at the same time. Get a helping hand to prevent damaging the rows.

Medium Roof Models:

Medium roof model Sprinters are similar installation methods, but with an additional row on each end. You will notice Rows 10 and 11 which are to be installed in the same method as 1-9.

Lighting and Wiring:

The beauty of row-by-row installation method is the ease of running wiring. You may loosen or remove the screws on a single row for an easier time feeding wiring through your ceiling.

- Install puck lights by feeding wiring from the outside and pushing the puck light into place. The springs on the back will lock it in place.
- Each puck light set comes with a ballast that can be wired to your 12V power supply or dimmer.

Accessory Cutouts

You may notice several channel cuts in various ceiling panels to accommodate the following:

- "FOAM" cutout lines in front outside row panels are cutting guides to wrap around factory foam pillars directly behind cockpit
- "DOME" cutout lines in 9A/9B to accommodate factory dome light
- Wiring Channel carved in all Row 8 panels to tuck factory wiring harness out of sight.