



Verieteri
SPA

1.63TL

TELESCOPIC
WHEEL
LOADER



VENIERI

1.63TL

Venierina



HEAVY DUTY TELESCOPIC BOOM

New concept boom and kinematic (VENIERI TELESCOPIC PARALLEL KINEMATIC) designed for heavy duty activities, that ensure **safety** and **reliability** in any application, especially on heavy ones.



AUTOMOTIVE DISC BRAKE SYSTEM

Disc Brake system, usually used on big loaders only, to ensure a strong breaking performance.



LED LAMP

Next-gen led lamps, as used in automotive applications.



VROOOOOOM!

25 mph driving speed. As this machine is coming from the Italian Motor Valley, *the speed is standard!*



50 HP OF PURE JAPANESE POWER

Yanmar engine, inline four cylinder, aspirated, Tier III, able to deliver **high torque at low rpm**.



360° 3D VIEW

Full control of the whole working area as well as front and rear attachments, thanks to the **360° visibility** of the Venieri Cabin.



3 CABINS 3 OPTIONS JUST 1 MACHINE

It's possible to choose between **3 different types of cabin**, to better meet customers' needs.



PERFECT STABILITY

Rear oscillating axle and central articulation (heavy-duty, oversized, designed for 13,000/15,000 lbs machines).



REAR TOOL CARRIER

The machine can be equipped with multiple hydraulic and electric lines, to use **rear attachments**.



TYRE RANGE FOR ANY KIND OF APPLICATION

Wide range of tyres selected for any kind of terrain and application: both industrial and agricultural.



1.63TL

TELESCOPIC WHEEL LOADER



DIESEL ENGINE

Engine: 4 cylinders, direct injection, water cooled, paper dry filter. Emissioned according to Tier III.

Type	Yanmar 4TNV88	
Max power	36kW - 50 HP	
Rated rpm	3.000	
Net power ISO/TR 14396	35 kW - 48 HP	
Net power EEC/80/1269	35 kW - 48 HP	
Economic working range	1200 - 1800 rpm	
Max. torque	ft lbf	104
Bore	in	3.46
Stroke	in	3.54
Displacement	in ³	134



ELECTRIC SYSTEM

Battery	12 Volt	
Capacity EN 60095-1	80 Ah - 770 A	
Alternator rating	55 A	
Reverse warning	Standard	
Wiring according to	IP 67 - DIN 40050	



TRANSMISSION

Hydrostatic transmission with automatic power regulation and closed circuit with variable-displacement pump and engine. Two forward/reverse speeds with single-lever control.

Speed	Forward	Backward
1 st gear mph	0 ÷ 5	0 ÷ 5
2 nd gear mph	0 ÷ 25*	0 ÷ 25*

* with 420/55 R17 tyres



AXLES

Two heavy duty axles with planetary final drives in each wheel. All wheel drive. Fixed rigid drive axle on front chassis section.

Oscillating drive axle on rear chassis section up to a total angle of 20°.

Transfer gearbox transferring movement directly to the rear and to the front via a transmission shaft. Self-locking limited slip differential on front axle (optional on rear axle).



BRAKES

Service: disk brake hydraulically operating on front axle, working on all wheels. Parking brake: mechanical disk brake operating on service brake, manually actuated.



TYRES

Standard	12-16,5
Optional	31x15.50-15 • 420/55 R17



STEERING

Servo assisted steering hydraulic LOAD SENSING system.

Total steering angle	90°	
Inner tyres turning radius	ft in	5'2.99"
External tyres turning radius	ft in	10'3.46"
External bucket turning radius	ft in	11'8.35"



HYDRAULIC SYSTEM

Hydraulic gear pump with LOAD SENSING priority valve for steering circuit. 4-section modular control valve with main relief valve. Double-acting hydraulic cylinders.

Hydraulic oil cooling radiator. Full-flow oil filter on the return line. Single cloche-lever arm control with 4 position lifting system and with 3 position bucket system, auxiliary system and telescopic function by switch.

Max flow	gpm	15.32
Loader relief valve pressure	psi	2,756
Steering relief valve pressure	psi	3,046



TELESCOPIC ARM

Telescopic boom with Z-bar linkage and compensation integrated in the lifting cylinder to ensure parallelism.

- Anti-tipping device and safety block valves
- Telescopic boom cylinder inside the telescopic arm
- Ride control and floating function on request



SERVICE CAPACITIES

Engine	gal	2.11
Front axle	gal	1.53
Rear axle + gear box	gal	1.72
Hydraulic circuit	gal	13.21
Brake system	gal	0.29
Fuel	gal	13.21
Water cooling	gal	2.38



TECHNICAL FEATURES

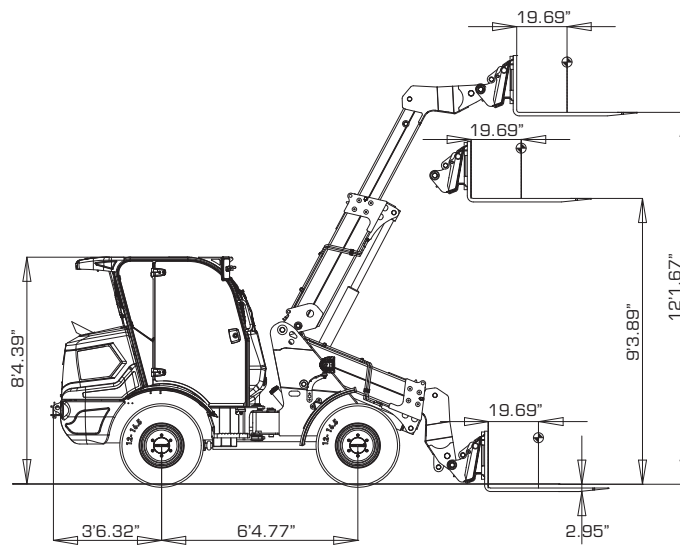
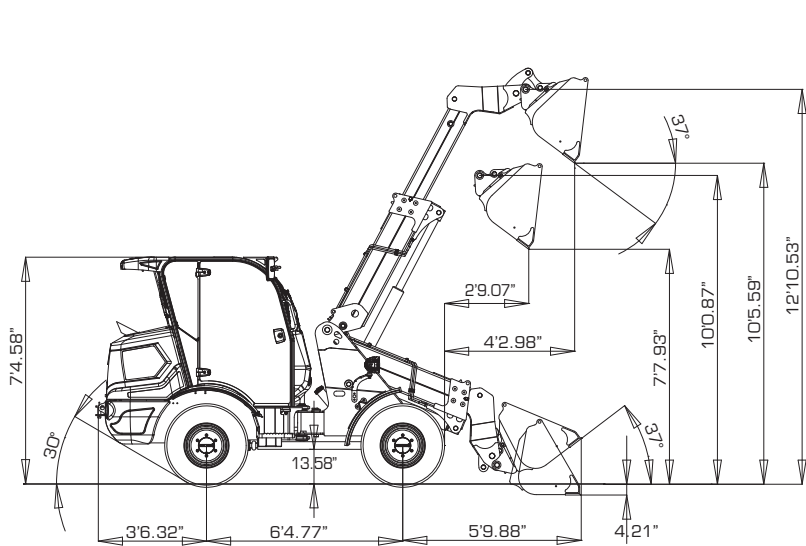
Standard bucket capacity	yd ³	0,65
Standard bucket width	ft in	4'11.06"
Straight static tipping load	lbs	5,071
Full turned 45° tipping load	lbs	4,365
Hinge pin height (telesc. retracted)	ft in	10'0.87"
Hinge pin height (telesc. extended)	ft in	12'10.53"
Dump height at 37° (telesc. retracted)	ft in	7'7.93"
Dump height at 37° (telesc. extended)	ft in	10'5.59"
Reach at 37° (telesc. retracted)	ft in	2'9.07"
Reach at 37° (telesc. extended)	ft in	4'2.98"
Breakout force	lbs	5,952
Maximum loading height with forks (telesc. extended)	ft in	12'1.67"
Forks static tipping load, full turn	lbs	3,444
Payload EN 474-3 (80%) [*]	lbs	2,756
Payload EN 474-3 (60%) [*]	lbs	2,066

[*] Loading center 19.69"

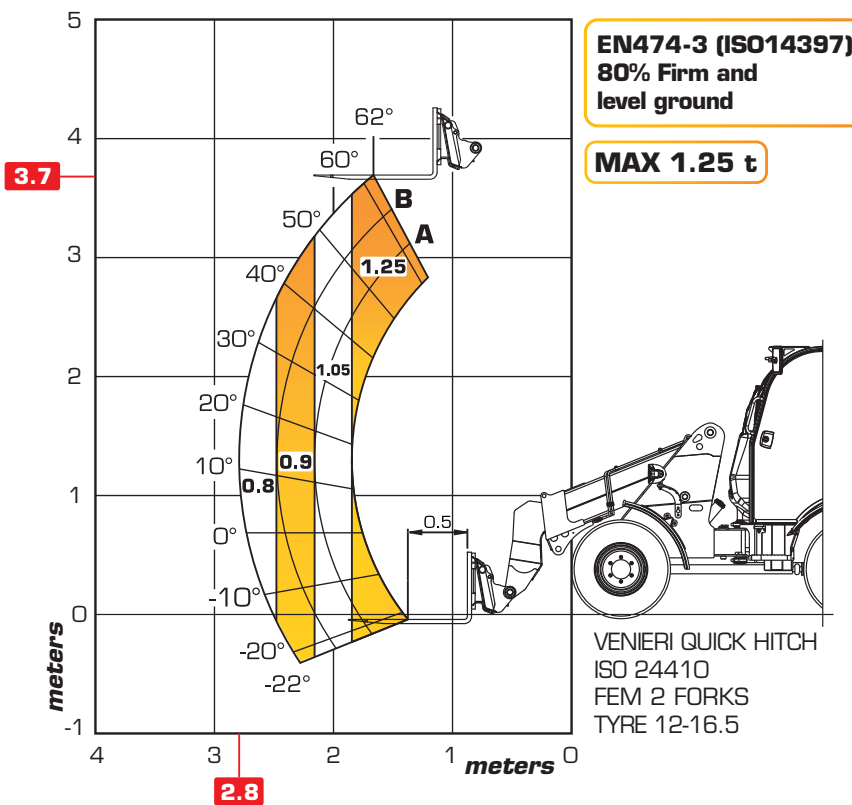
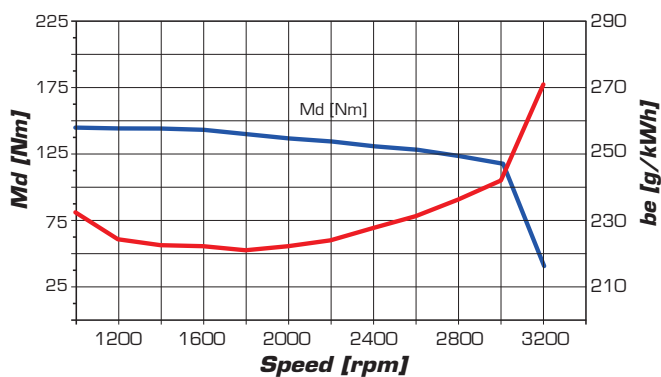
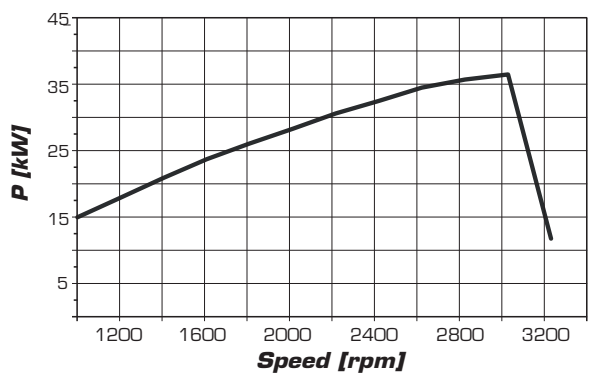


DIMENSIONS AND WEIGHTS

Max length in transfer position	ft in	15'8.98"
Max width in transfer position	ft in	4'11.06"
Max height	ft in	7'4.58"
Track width - standard tyres	ft in	3'10.06"
Overall standard tyre width	ft in	4'10.86"
Wheel base	ft in	6'4.77"
Ground clearance	in	13.58"
Standard operating weight	lbs	7,937
Max permissible weight	lbs	8,818



POWER | **TORQUE** | **FUEL CONSUMPTION**





EURO
QUICK COUPLER



SKID
QUICK COUPLER

STANDARD QUICK COUPLING*

* EQUIPMENTS AVAILABLE ON STOCK

Wide range of quick coupler and hydraulic and electric option, suitable to connect every type of attachments.



VENIERI REAR HYDRAULIC LINE

In order to grant maximum versatility, the machine can be equipped with rear Hydraulic line, to supply remote attachments.



SETUP ON DEMAND

The new telescopic loader can be configured with **3 different cabin models (ROPS / FOPS I)**, to adapt it to **any working condition**.

CABIN

CLOSE AND HEATED CABIN, WITH AIRCONDITION IN OPTION.



CANOPY

CANOPY WITH RETROFITTABLE GLASS AND DOORS.



ROLLBAR ROOF

FOLDABLE ROLLBAR.



BASIC MACHINE


Battery main switch	✓	Anti-tipping device	✓
Tool box	✓	Safety block valves on lifting and bucket cylinders	✓
Fuel preheating (cold climates)	○	Speed selection on joystick	○
Plugs with keys for fuel and hydraulic tanks	✓	Inch pedal integrated in brake pedal	✓
Proportional self lock front differential	✓	Selection F/N/R on joystick	✗
Proportional self lock rear differential	○	Transmission selector on column steering	✓
Recovery hitch	✓	40 km/h travel speed	✓
Warning beacon	✓	Service brake that works on both axles	○
Twin beacons LED	○	Automatic centralized greasing system	○
Soundproofing	✓	Ride control	○
Spare parts catalogue	✓	Floating mode	✓
User manual	✓	Bucket and lifting proportionally controlled	✓
Type-approval for road traffic	✓	Auxiliary ON/OFF controlled	○
European Agricultural Tractor type approval (167/2013 - Mother Regulation)	✗	Engine preheating system	○
Safety clamp for bucket and lifting cylinders	✓	Environmentally-friendly hydraulic oil	○
Speed reduction kit	○	Hydraulic oil ISO 46 (cold climates)	○
"Venieri GLOBAL" system	✗	Cyclone dust separator	✓
Double-speed hydraulic fan	✗	Road lights front and rear	○
Reversible fan (for radiator cleaning)	✗	Boom worlights	✓
Hydraulic negative parking brake	✗	Plastic front and rear fenders	○

CABIN EQUIPMENT


Foldable Roll-Bar homologated ROPS/FOPS I	○	Buzzer	✓
4 post Canopy homologated ROPS/FOPS I	✓	Cabin carpet	✓
Closed cabin homologate ROPS/FOPS I, pressurized and soundproofed	○	Radio preparation (only for closed cabin)	✓
Front and rear windscreen wiper with washer (only for closed cabin)	✓	Supplementary socket 12V	✓
Double entrance door	✓	Manual Air Conditioning	○
Rear openable window (only for closed cabin)	✓	"Climatronic Venieri" system	○
LED work lights (2 front + 2 rear)	✓	Ceiling lamp (only for closed cabin)	✓
Mobile phone compartment	○	Sun visor	○
Document compartment	✓	Rear view mirrors	✓
Seat with mechanical suspension	✓	Heatable rear view mirrors	○
Seat with pneumatic suspension	○	First-aid kit	○
Seat with pneumatic suspension and heating	○	Fire extinguisher 4.41 lbs	○
Seat armrests (LH)	✓	Seat belt	✓
Adjustable armrest (RH) for joysticks	✓	Instrumentation and dashboard with LCD display	✓
		Tilting column steering	✓
		Safety glass breaker	○

SPECIAL EQUIPMENT


Hydraulic quick coupler SKID (ISO 24410)	○
Hydraulic quick coupler EURO	○
Digging bucket	○
Light material bucket	○
Cement mixing bucket	○
Multipurpose bucket (4 in 1)	○
Lifting forks	○
Root rake with grapples	○
Grab for wrapped bales	○
Snow blade and "V" type snow blade	○
Angle-tilt dozer blade	○
Unpressurized return pipe on fixed boom	○
Double auxiliary line	○
Rear electrics	○
Rear auxiliary	○

STANDARD EQUIPMENTS*

* Equipments available on stock; others on request.



SWEeper



GRAPPLE FORK



GRAPPLE BUCKET



LASER ANGLE DOZER BLADE



GRAB FOR WRAPPED BALES



ROUND BALE FORK



PALLET FORK



LIFTING FLOATING FORK



HIGH VOLUME BUCKET



4 IN 1 BUCKET



ANGLE DOZER BLADE



SNOW BLADE



ANGLE ROLL SWEPER



MIXING BUCKET



FRONT CUTTING HEAD



GRASS CUTTER



VENIERI

Via Piratello, 106 - 48022 Lugo (RA) ITALY
 Tel. +39 0545 904411 - Fax +39 0545 30389
 e-mail: info@vf-venieri.com
www.vf-venieri.com

The illustrations on the present folder do not necessarily show the product standard version. Data and dimensions described in this folder are not binding. Venieri reserves the right of carrying out possible changes at any time and without previous notice because of its policy of steady development and improvement of the products.