

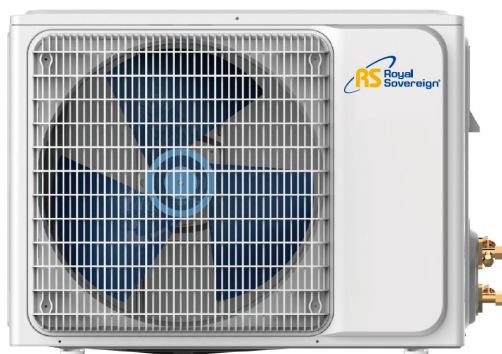
Mini-Split Air Conditioner

RSAC-S1217

RSAC-S1817

RSAC-2417S

OPERATING MANUAL



Thank you for purchasing the Royal Sovereign Mini-Split Air Conditioner, RSAC-S1217 / RSAC-S1817 / RSAC-2417S. This manual will provide you with safety information, instructions for optimal use, and proper care and maintenance for your product. Please read this manual carefully before operating.

CONTENTS

SAFETY INSTRUCTIONS.....	3-4
BOX CONTENTS.....	5
PRODUCT VIEW.....	5
INSTALLATION.....	6-17
NOTICE FOR INSTALLATION	
INSTALLATION: INDOOR UNIT	
INSTALLATION: OUTDOOR UNIT	
CHECK AFTER INSTALLATION	
TEST OPERATION	
NOTICES FOR USE.....	18-19
MACHINE MAINTENANCE.....	20-21
TROUBLESHOOTING.....	22
SPECIFICATIONS.....	23
WARRANTY.....	24

SAFETY INSTRUCTIONS

Always be careful when using the machine. To reduce the risk of fire, electrical shock, or other injuries, keep these safety considerations in mind when installing, using, and maintaining your machine.

WARNING

1. The air conditioner must be properly grounded on a level surface. Do not connect the earth wire to the gas pipeline, water pipeline, lightning rod, or telephone earth wire.
2. Always switch off the device and cut the power supply when the unit is not in use for a long time.
3. Do not let the remote control or the indoor unit get wet.
4. Make sure the voltage meets the appliance's electricity requirements.
5. Do not operate if the electrical plug or power cord is damaged. It must be replaced by the manufacturer, its service agent, or a similar qualified person.
6. Do not under any circumstances alter the electrical plug.
7. Do not turn off the main power switch during operation with wet hands.
8. Do not share the electrical socket with other appliances.
9. Always switch off the device and cut the power supply before performing any maintenance or cleaning.
10. Do not pull out the power cable to unplug.
11. An earth leakage breaker with rated capacity must be installed.
12. Do not install the air conditioner in a place where there is flammable gas or liquid. The distance between them should be more than 3.3 ft.
13. Do not use air conditioner in lightning storm weather. Power supply should be cut in time to prevent the occurrence of danger.
14. Do not block air inlets or air outlets with obstacles.
15. Do not put hands or insert any objects into the air inlets or air outlets.
16. Please note whether the installed stand is firm enough or not. If it is damaged, it may lead to the fall of the unit.
17. Don't let the air conditioner blow against the heater appliance. Otherwise, it will lead to incomplete combustion, thus causing poisoning.
18. The appliance shall be installed according to the installation instructions supplied (pg. 6-17) and in accordance with national wiring regulations.
19. Do not modify any part of this product.
20. Do not operate this appliance for any other purpose other than its intended use. (Such as drying clothes, preserving foods, etc.)

SAFETY INSTRUCTIONS

Always be careful when using the machine. To reduce the risk of fire, electrical shock, or other injuries, keep these safety considerations in mind when installing, using, and maintaining your machine.

CAUTION

1. Do not open windows and doors for a long time when the air conditioner is running. This will cause the cooling or heating capacity to be weakened.
2. Do not stand /sit on top of the outdoor unit and do not place heavy items on it.
3. Do not apply the cold air from the unit to the body for a pro-longed time.
4. It is recommended that the temperature difference between indoor and outdoor temperature should not be too large. Appropriate adjustments of the setting temperature can prevent the waste of electricity.
5. If your air conditioner is not fitted with a supply cord and a plug, an all-pole switch must be installed in the fixed wiring and the distance between contacts should be no less than 0.1 inch.
6. If your air conditioner is permanently connected to the fixed wiring, a residual current device (RCD) having rated residual operating current not exceeding 30 mA should be installed in the fixed wiring.
7. The power supply circuit should have leakage protector and air switch of which the capacity should be more than 1.5 times of the maximum current.

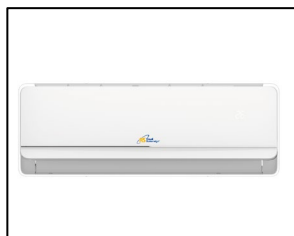
NOTE:

- This product contains fluorinated greenhouse gases. Refrigerant leakage contributes to climate change. Refrigerant with lower global warming potential (GWP) would contribute less to global warming than a refrigerant with higher GWP, if leaked to the atmosphere. This appliance contains a refrigerant fluid with a GWP equal to [2088]. This means that if 1 kg of this refrigerant fluid would be leaked to the atmosphere, the impact on global warming would be [2088] times higher than 1 kg of CO₂, over a period of 100 years. Never try to interfere with the refrigerant circuit yourself or disassemble the product yourself and always ask a professional. The specification of the fuse is printed on the circuit board, such as: 3.15A/250V AC, etc.

WEEE Warning

- Meaning of crossed out wheeled dustbin: Do not dispose of electrical appliances as unsorted municipal waste, use separate collection facilities. Contact your local government for information regarding the collection systems available. If electrical appliances are disposed of in landfills or dumps, hazardous substances can leak into the groundwater and get into the food chain, damaging your health and well-being. When replacing old appliances with new ones, the retailer is legally obligated to take back your old appliance for disposals at least free of charge.

BOX CONTENTS



Indoor Unit



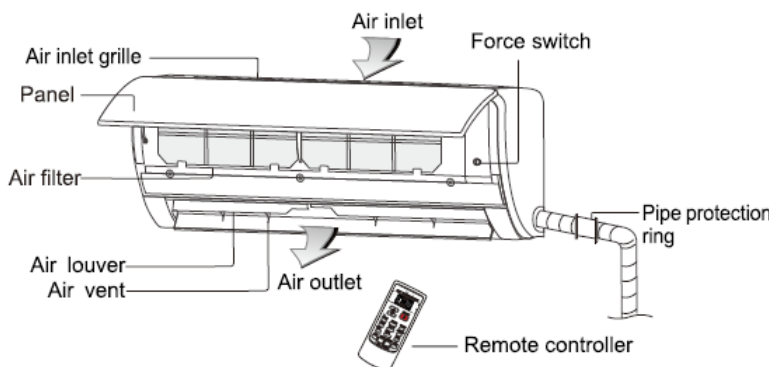
Outdoor Unit



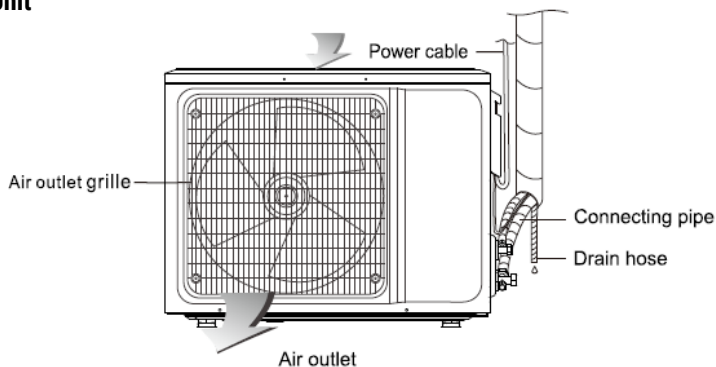
Accessories

PRODUCT VIEW

Indoor Unit



Outdoor Unit



NOTICE FOR INSTALLATION

Important Notices

- Before installing, please contact a local HVAC professional. If the unit is not installed by a registered HVAC contractor, the warranty will be voided.
- The air conditioner must be installed by professionals according to the national wiring rules and this manual.
- To move and install the air conditioner in another place, please contact a certified HVAC professional.

Requirements for Installation Position

- Avoid places of inflammable or explosive gas leakage or where there are strongly aggressive gases.
- Avoid places subject to strong artificial electric/magnetic fields.
- Avoid places subject to noise and resonance.
- Avoid severe natural conditions (e.g., heavy lampblack, strong sandy wind, direct sunshine, or high temperature heat sources).
- Avoid places within the reach of children.
- Shorten the connection between the indoor and outdoor units.
- Select where it is easy to perform service and repair, also where ventilation is good.
- The outdoor unit shall not be installed in any way that could occupy an aisle, stairway, exit, fire escape, catwalk, or any other public area.
- The outdoor unit shall be installed as far as possible from doors, windows, and plants/trees.

Requirements of the Mounting Structure

- The mounting rack must meet the relevant national or industrial standards in terms of strength with welding and connection areas rustproofed.
- The mounting rack and its load carry surface shall be able to withstand 4 times above the weight of the unit, or 440.9 lbs., whichever is heavier.
- The mounting rack of the outdoor unit shall be fastened with an expansion bolt.
- Ensure the secure installation regardless of what type of wall on which it is installed, in order to prevent potential dropping that could hurt people.

NOTICE FOR INSTALLATION

Electrical Safety Requirements

- Be sure to use the rated voltage and air conditioners dedicated circuit for the power supply, and the power cord diameter must meet the national requirements.
- When the maximum current of air conditioner is $\geq 16A$, it must use the air switch or leakage protection switch equipped with protection devices.
- The normal operating range is 90%-110% of the local rated voltage.
- The minimum clearance between the air conditioner and the combustibles is 4.5 ft.
- The interconnection cord connects the indoor and outdoor units. You must first choose the right cable size before preparing it for connection.
- Cable types:
 - Outdoor Power Cable: H07RN-F or H05RN-F
 - Interconnection Cord: H07RN-F or H05RN-F

Minimum Cross-Sectional Area of Power Cable and Interconnection Cord

North America

Appliance Amps(A)	AWG
10	18
13	16
18	14
25	12
30	10
40	8

Other Regions

Rated Current of Appliance(A)	Nominal Cross-Sectional Area(mm ²)
>3 and ≤ 6	0.75
>6 and ≤ 10	1
>10 and ≤ 16	1.5
>16 and ≤ 25	2.5
>25 and ≤ 32	4
>32 and ≤ 40	6

- The size of the interconnection cord, power cable, fuse, and switch needed is determined by the maximum current of the unit. The maximum current is indicated on the nameplate located on the side panel of the unit. Refer to this nameplate to choose the right cable, fuse, or switch.

NOTE: Core number of cable refer to the detailed wiring diagram adhered on the unit which you purchased.

NOTICE FOR INSTALLATION

Requirements for operations at raised height

- When carrying out installation at 6.6 ft. or higher above the base level, safety belts must be worn and ropes of sufficient strength be securely fastened to the outdoor unit, to prevent falling that could cause personal injury or death as well as property loss.

Grounding requirements

- The air conditioner is the type I electrical appliance and must ensure a reliable grounding.
- Do not connect the grounding wire to a gas pipe, water pipe, lightning rod, telephone line, or a circuit poorly grounded to the earth.
- The grounding wire is specially designed and shall not be used for other purpose, nor shall it be fastened with a common tapping screw.

Others

- The connection method of the air conditioner and the power cord and the interconnection method of each independent element shall be subject to the wiring diagram affixed to the machine.
- The model and rating value of the fuse shall be subject to the silkscreen on corresponding controller or fuse sleeve.

Packing List

Packing list of the indoor unit

Name	Quantity	Unit
Indoor Unit	1	Set
Remote Controller	1	PC
Batteries (7#)	2	PC
Instructions	1	Set
Drain pipe	1	PC

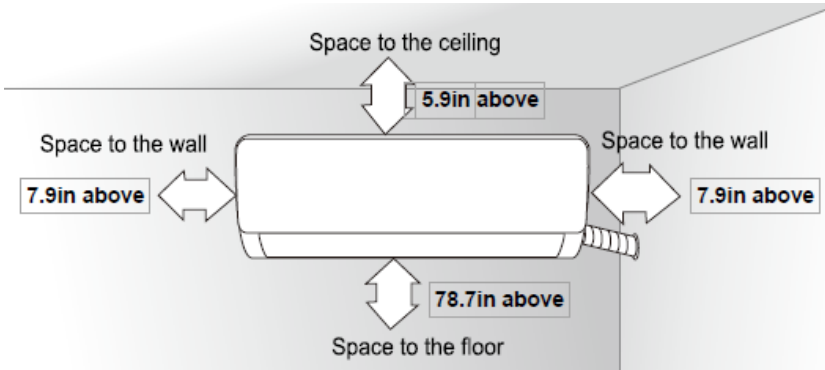
Packing list of the outdoor unit

Name	Quantity	Unit
Outdoor Unit	1	Set
Connecting pipe	2	PC
Plastic Strap	1	ROLL
Pipe Protection Ring	1	PC
Luting (putty)	1	PACKET

NOTE: All accessories shall be subject to actual packaging material, and if there is any difference, please understand.

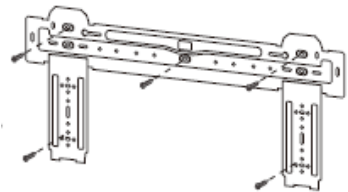
INSTALLATION: INDOOR UNIT

Dimension Drawing of Indoor Unit Installation



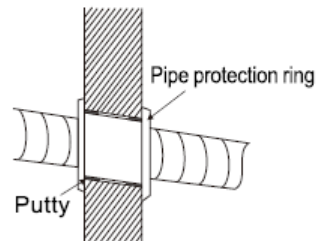
Mounting Plate

1. The wall for installation of the indoor unit shall be hard and firm, so as to prevent vibration.
2. Use the “+” type screw to fasten the peg board. Horizontally mount the peg board on the wall and ensure the lateral horizontal and longitudinal vertical.
3. Pull the peg board by hand after the installation, to confirm whether it is solid.



Wall-through Hole

1. Make a hole with an electric hammer or a water drill at the predetermined position on the wall for piping, which shall slant outwardly by 41°F-50°F.
2. To protect the piping and the cables from being damaged running through the wall, a pipe protecting ring shall be installed and sealed with putty.

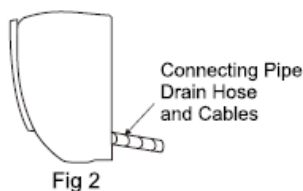
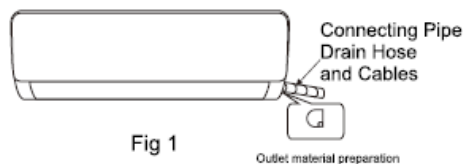


NOTE: Usually, the wall hole is 60mm ~ 80mm. Avoid pre-buried power wire and hard wall when making this hole.

INSTALLATION: INDOOR UNIT

Route of Pipeline

- Depending on the position of the unit, the piping may be routed sideways from the left or the right (Fig 1), or vertically from the back (Fig 2) (depending on the pipe length of the indoor unit). In the case of sideway routing, cut off the outlet cutting stock of the opposite side.

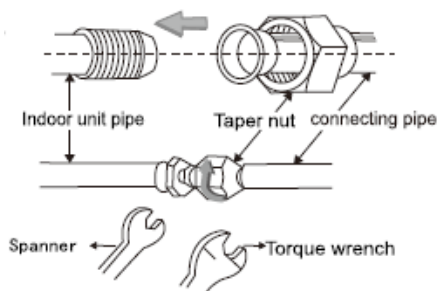


Drain Pipe Connection

- Remove the mountings and pull the indoor unit pipe out of the housing.
- Connect the connecting pipe to the indoor unit:
 - Aim at the pipe center, tighten the taper nut with fingers, and then tighten the taper nut with a torque wrench. The direction is shown in diagram below. The torque used is shown on the table below.

Tightening torque table

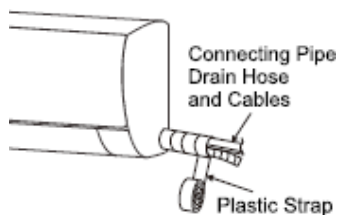
The size of pipe(inch)	Torque(N · m)
(1/4)	15~25
(3/8)	35~40
(1/2)	45~60
(5/8)	73~78
(3/4)	75~80



INSTALLATION: INDOOR UNIT

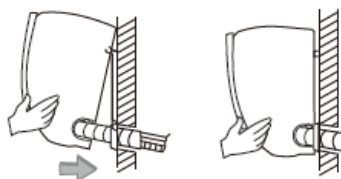
Wrap the Piping

1. Use the insulation sleeve to wrap the joint part of the indoor unit and the connection pipe. Then use the insulating material to pack and seal insulation pipe, to prevent generation of condensate water on the joint part.
2. Connect the water outlet with drain pipes, and make the connection pipe, cables, and the drain hose straight.
3. Use plastic cable ties to wrap the connecting pipes, cables and drain hose. Run the pipe sloping downward.



Fixing the Indoor Unit

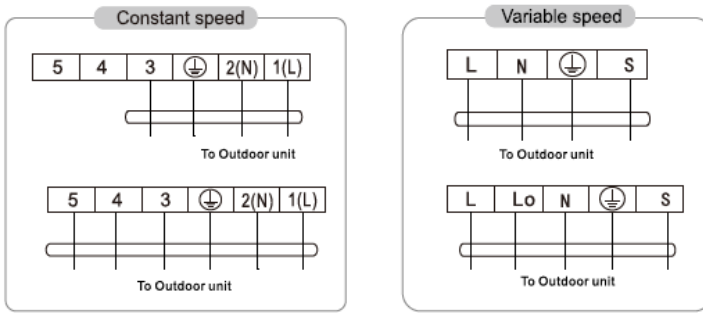
1. Hang the indoor unit on the peg board and move the unit from left to right to ensure that the hook is properly positioned in the peg board.
2. Push toward the lower left side and the upper right side of the unit toward the peg board, until the hook is embedded in the slot and makes a "click" sound.



INSTALLATION: INDOOR UNIT

Wiring Diagram

- If your air conditioner is provided with interconnection cord, the wiring of the indoor unit was connected in the factory, there is no need of connection.
- If the interconnection cord is not provided, connection is needed in accordance with the wiring diagram.



Connector



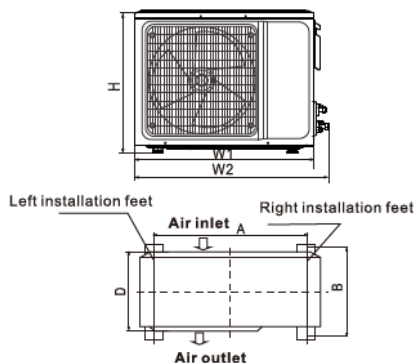
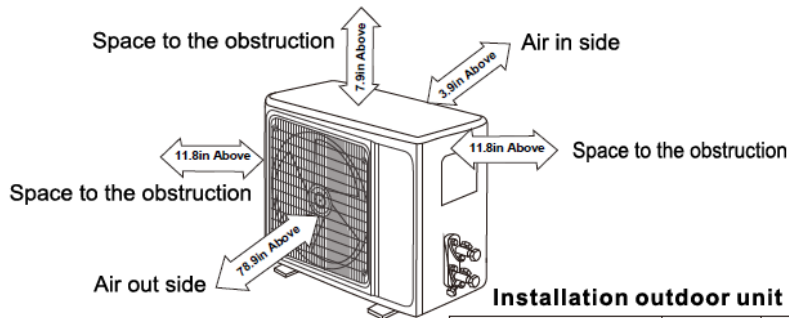
If there is a connector, connect it directly.

NOTE:

- This manual usually includes the wiring mode for the different kind of A/C. We cannot exclude the possibility that some special type of wiring diagrams are not included.
- The diagrams are for your reference only. If the entity is different with this wiring diagram, please refer to the detailed wiring diagram adhered on the unit which you purchased.

INSTALLATION: OUTDOOR UNIT

Dimension Drawing of Outdoor Unit Installation



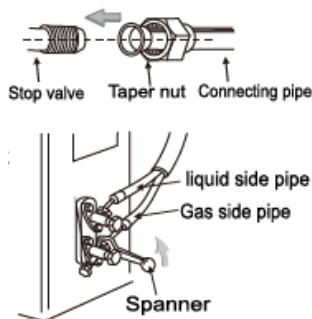
Installation outdoor unit bolt

Outdoor Unit Size of Shape W1(W2)*H*D (inch)	A (inch)	B (inch)
25.9(27.7)*16.4*10.9	16.8	10.9
23.4(25.2)*18.9*10.1	15.6	11.3
25.7(27.7)*19.5*9.4	19.5	10.1
27.3*29.1*19.5*9.4	17.9	10.1
27.3(29.1)*19.5*9.9	21.1	10.9
28.5(30.4)*21.3*11.1	21.1	10.9
29.6(31.6)*21.3*11.1	21.3	11.7
30.8(32.8)*21.5*11.3	21.3	12.3
31.2(33.5)*21.3*12.3	21.1	12.7
31.2(33.2)*23(26.9)*12.1	21.1	13.1
32.2(34.3)*25.5*12.1	24.6	13.7
35.1(37.1)*31.0*12.9	20.9	13.7
37.8(40.7)*31.3*15.4	26.3	16.0

Install the Connection Pipe

Connect the Outdoor Unit with Connecting Pipe:

- Aim the counter-bore of the connecting pipe at the stop valve and tighten the taper nut with fingers. Then tighten the taper nut with a torque wrench.
- When prolonging the piping, extra amount of refrigerant must be added so that the operation and performance of the air conditioner will not be compromised.



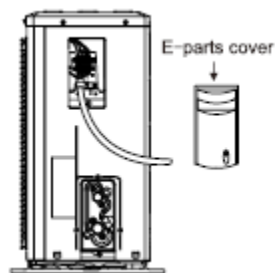
NOTE: This table is for reference only.

Piping length	Amount of refrigerant to be added	
≤ 16.4ft	Not needed	
16.4ft - 49.2ft	CC ≤ 12000Btu	20g/m
	CC ≥ 18000Btu	30g/m

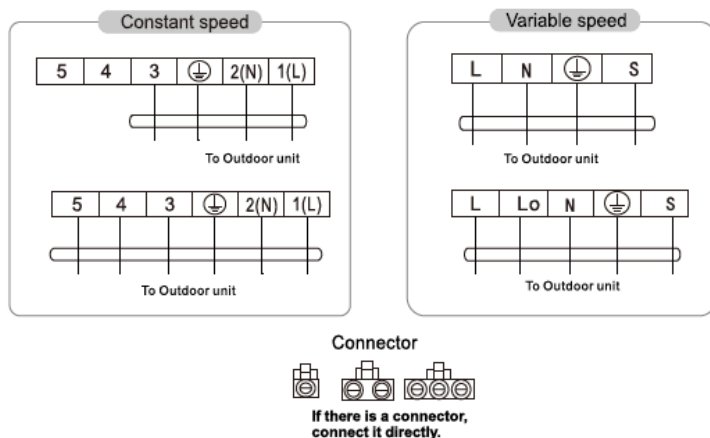
INSTALLATION: OUTDOOR UNIT

Wiring Connection

1. Loosen the screws and remove the E-parts cover from the unit.
2. Connect the cables respectively to the corresponding terminals of the terminal board of the outdoor unit (see the wiring diagram), and if there are signals connected to the plug, just conduct a butt joint.
3. Ground Wire: Remove the grounding screw out of the electric bracket, cover the grounding wire end onto the grounding screw and screw it into the grounding hole.
4. Fix the cable reliably with fasteners (Pressing board).
5. Put the E-parts cover back in its original place and fasten it with screws.



Wiring Diagram



NOTE:

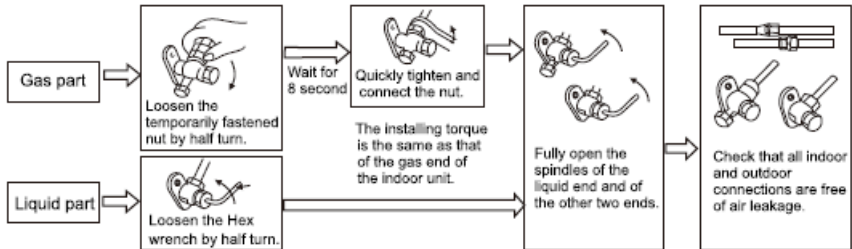
- This manual usually includes the wiring mode for the different kind of A/C. We cannot exclude the possibility that some special type of wiring diagrams are not included.
- The diagrams are for your reference only. If the entity is different with this wiring diagram, please refer to the detailed wiring diagram adhered on the unit which you purchased.

INSTALLATION: OUTDOOR UNIT

Expelling the Air

Outdoor Unit Refrigerant Discharging Method:

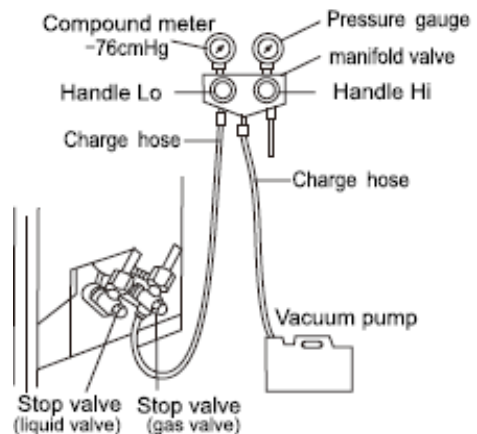
- After the pipe side connection is complete, proceed as follows.



Vacuum Pumping Method:

(R410A refrigerant evacuation must use the Vacuum Pumping Method)

- Before working on the air conditioner, remove the cover of the stop valve (gas and liquid valves) and be sure to retighten afterward. This is done to prevent potential air leakage.
- To prevent air leakage and spilling tighten all connecting nut of all flare tubes.
 - Connect the stop valve, charge hose, manifold valve, and vacuum pump.
 - Fully open the handle Lo of the manifold valve and apply vacuum for at least 15 minutes and check that the compound vacuum gauge reads -0.1 Mpa (-76 cmHg).
 - After applying vacuum, fully open the stop valve with a hex wrench.
 - Check that both indoor and outdoor connections are free of air leakage.



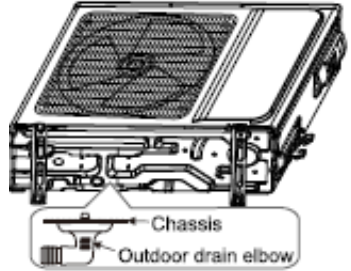
INSTALLATION: OUTDOOR UNIT

Outdoor Condensation Drainage (Heat pump type only)

- When the unit is heating, the condensing water and defrosting water can be drained out reliably through the drain hose.

Installation:

- Install the outdoor drain elbow in 25 hole on the base plate, and joint the drain hose to the elbow, so that the waste water formed in the outdoor unit can be drained out to a proper plate.



CHECK AFTER INSTALLATION

Electrical Safety Check

1. If the supply voltage is as required.
2. If there is any faulty or miss connection in each of the power, signal and grounding wires.
3. If the grounding wire of the air conditioner is securely grounded.

Installation Safety Check

1. If the installation is secure.
2. If the water drain is smooth.
3. If the wiring and piping are correctly installed.
4. Check that no foreign matter or tools are left inside the unit.

Leak Test of the Refrigerant

Depending on the installation method, the following methods may be used to check for suspect leak, on areas such as the four connections of the outdoor unit and the cores of the cut-off valves and t-valves:

1. Bubble Method: Apply of spray a uniform layer of soap water over the suspected leak spot and observe carefully for bubble.
2. Instrument Method: Checking for leak by pointing the probe of the leak detector according to the instruction to the suspect points of leak.

TEST OPERATION

Test Operation Preparation

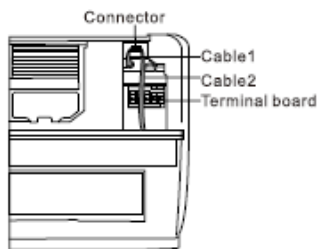
- Verify that all piping and connection cables are well connected.
- Confirm that the valves at the gas side the liquid-side are fully open.
- Connect the power cord to an independent power socket.
- Install batteries in remote control.

Test Operation Method

1. Turn on the power and push the ON/OFF switch button of the remote controller to start the air conditioner.
2. Select COOL, HEAT (not available on cool-only models), SWING and other operation modes with the remote controller and see if the operation is ok.

Specific Caution

1. Open the front panel of the indoor.
2. The connector can not touch the terminal board and is positioned as shown in the picture to the right.



NOTICES FOR USE

The Conditions of Unit Can't Normally Run

- Within the temperature range provided in following table, the air conditioner may stop running and other anomalies may arise.

Cooling	Outdoor	> 109.4°F (Apply to T1)
		> 125.6°F (Apply to T3)
	Indoor	< 64.4°F
Heating	Outdoor	> 75.2°F
		< 19.4°F
	Indoor	> 80.6°F

- When the temperature is too high, the air conditioner may activate the automatic protection device, so that the air conditioner could be shut down.
- When the temperature is too low, the heat exchanger of the air conditioner may freeze, leading to water leakage or another malfunction.
- In long-term cooling or dehumidification with a relative humidity of above 80% (doors and windows are open), there may be water condenses or dripping near the air outlet.
- T1 and T3 refer to ISO 5151.

Notes for Heating

- The fan of the indoor unit will not start running immediately after the heating is started to avoid blowing out cool air.
- When it is cold and wet outside, the outdoor unit will develop frost over the heat exchanger which will compromise the heating capacity. This is when the air conditioner will start to defrost.
- During defrost, the air conditioner will stop heating for about 5-12 minutes.
- Vapor may come out from the outdoor unit during defrost. This is not a malfunction, but a result of fast defrost.
- Heating will resume after the defrost is complete.

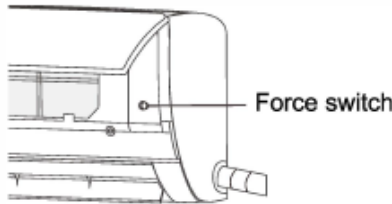
Notes for Turning Off

- When the air conditioner is turned off, the main controller will automatically decide whether to stop immediately or after running for dozens of seconds with lower frequency and lower air speed.

NOTICES FOR USE

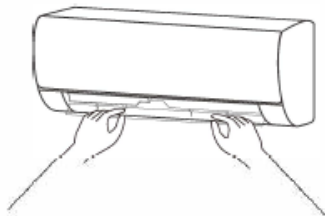
Emergency Operation

- If the remote controller is lost or broken, use force switch button to operate the air conditioner.
- If this button is pushed with the unit OFF, the air conditioner will operate in AUTO mode.
- If this button is pushed with the unit ON, the air conditioner will stop running.
- The force switch is located on the filter side of the unit and is in a tight space. User may need a thin object such as screwdriver to push the button.



Airflow Direction Adjustment

1. Use up-down swing and left-right swing buttons on the remote controller to adjust the airflow direction. Refer to the operation manual of the remote controller for detail.
2. For models without left-right swing function, the fins have to be moved manually.
Note: Move the fins before the unit is in operation, or your finger might be injured. Never place your hand into the air inlet or outlet when the air conditioner is in operation.



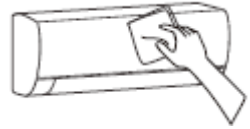
MACHINE MAINTENANCE

Warning

- Before the cleaning of the air conditioner, it must be shut down and the electricity must be cut off for more than 5 minutes, otherwise there might be the risk of electric shocks.
- Do not wet the air conditioner, which can cause an electric shock. Make sure not to rinse the air conditioner with water under any circumstances.
- Do not use liquid or corrosive cleaning agents when wiping the air conditioner. Do not sprinkle water or any other liquid on the unit.
- Volatile liquids such as thinner or gasoline will damage the air conditioner housing, therefore please clean the housing of air conditioner only with soft dry cloth and damp cloth moistened with neutral detergent.

Clean the Panel

- When the panel of the indoor unit is contaminated, clean it gently with a wrung towel using warm water below 113°F and do not remove the panel while cleaning.



Remove the Air Filter

1. Use both hands to open the panel for an angle from both ends of the panel in accordance with the direction of the arrow.
2. Release the air filter from the slot and remove it.



Clean the Air Filter

- Use a vacuum cleaner or water to rinse filter, and if the filter is very dirty (for example, with greasy dirt), clean it with warm water (below 113°F) with mild detergent dissolved in, and then put the filter in the shade to dry in the air.



MACHINE MAINTENANCE

Mount the Air Filter

1. Reinstall the dried filter in reverse order of removal, then cover and lock the panel.



Check Before Use

1. Check whether all the air inlets and outlets of the units are unblocked.
2. Check whether there is blocking in the water outlet of the drain pipe, and immediately clean it up if any.
3. Check the ground wire is reliably grounded.
4. Check whether the remote control batteries are installed, and whether the power is sufficient.
5. Check whether there is damage in the mounting bracket of the outdoor unit, and if any, please contact our local service center.

Maintain After Use

1. Cut off the power source of the air conditioner, turn off the circuit breaker and remove the batteries from the remote control.
2. Clean the filter and the unit body.
3. Remove the dust and debris from the outdoor unit.
4. Check whether there is damage in the mounting bracket of the outdoor unit, and if any, please contact our local service center.

Immediately stop all operations and cut off the power supply, contact our service center locally in the following situations:

- Shrill sound is heard, or unpleasant odor is emitted during the operation.
- There is an abnormal heat in power supply cord and power plug.
- Accidentally pour impurities or water into the machine or the remote control.
- Air switch or protection switch often breaks.

TROUBLESHOOTING

In case of problems, first turn off the air conditioner and disconnect from the source of electricity.

Symptom	Solutions
Air conditioner can not operate at all	<ul style="list-style-type: none"> • Has the power been shut down? • Is the wiring loose? • Is voltage too high or too low? (measured by professionals) • Does it reach the set time for start up? • Does the circuit protection device trip?
Remote controller is not available	<ul style="list-style-type: none"> • Is the remote controller out of effective distance to the indoor unit? • Are there any obstructions between the controller and the signal receptor? • Is the battery exhausted?
Cooling (Heating) efficiency is not good	<ul style="list-style-type: none"> • Is the setting temperature suitable? • Is the air inlet or outlet obstructed? • Is indoor fan speed set at low speed? • Is there any heat source in your room? • Is the air filter dirty?
Indoor unit does not operate immediately when the air conditioner is restarted	<ul style="list-style-type: none"> • If the air conditioner is turned on immediately after it is turned off, the protective delay switch will delay the operation for 3 to 5 minutes.
There is unusual smell blowing from the outlet after operation is started	<ul style="list-style-type: none"> • The air conditioner itself does not have undesirable odor. If there is odor, it may be due to accumulation of the odor in the environment. Please clean the air filter or activate the cleaning function.
There is sound of running water during the running of air conditioner	<ul style="list-style-type: none"> • Sometimes the "hissing" sound of running water can be heard. This is the sound of the flow of the refrigerant, not a malfunction.
A slight "click" sound is heard at the of start-up or shut-down	<ul style="list-style-type: none"> • Due to temperature changes, panel, and other parts will swell, causing the sound of friction. This is normal, not a fault.
During the cooling operation, the indoor unit outlet sometimes will blow out mist	<ul style="list-style-type: none"> • This is because the indoor air is cooled rapidly. After it runs for some time, the indoor temperature and humidity will be reduced, and the mist will disappear

NOTE: Do not attempt to repair the unit by yourself. For all replacements and repairs that need to be made, contact Royal Sovereign Customer Service at +1) 800-397-1025 or contact a qualified service technician.

SPECIFICATIONS

MODEL	RSAC-S1217	RSAC-S1817	RSAC-2417S
Cooling Capacity Heating Capacity	12,000 BTU Cooling 12,300 BTU Heating	18,000 BTU Cooling 18,500 BTU Heating	24,000 BTU Cooling 24,000 BTU Heating
SEER Rating	17	17	17
Room Size (Sq. ft.)	300-500	600-800	900-1,200
Voltage / Frequency	115V / 60 Hz	230V / 60 Hz	230V / 60 Hz
Operating Sound Level	Indoor Unit: 42 dB Outdoor Unit: 52 dB	Indoor Unit: 46 dB Outdoor Unit: 55 dB	Indoor Unit: 49 dB Outdoor Unit: 55 dB
Ambient Range	61°F-90°F	61°F-90°F	61°F-90°F
Refrigerant	R410	R410	R410
Cord Length	16.4 ft. (5 m)	16.4 ft. (5 m)	24.6 ft. (7.5 m)
Zone Capacity	Single	Single	Single
Indoor Unit Dimensions (W x D x H)	29.53"W x 7.87"D x 11.22"H	35.43"W x 8.86"D x 12.20"H	42.60"W x 9.17"D x 12.99"H
Outdoor Unit Dimensions (W x D x H)	28.74"W x 11.22"D x 21.46"H	31.50"W x 12.40"D x 21.46"H	32.48"W x 12.20"D x 25.79"H
Indoor Unit Weight	17.60 lbs.	26.40 lbs.	30.80 lbs.
Outdoor Unit Weight	61.60 lbs.	88 lbs.	83.50 lbs.
Safety Certification	cETLus	cETLus	cETLus

ONE YEAR LIMITED WARRANTY

Royal Sovereign International, Inc. warranties this product to be free from defects in material and workmanship to the original purchaser only as outlined below.

Parts: Replacement of defective parts for 1 year from the date of customer purchase.

Compressor: 3-year warranty from the date of customer purchase. Royal Sovereign will supply a replacement compressor (parts only), free of charge.

Labor: NO LABOR. The original owner is solely responsible for all labor costs. This limited warranty does NOT include labor or other costs incurred for service, maintenance, repair, removal, replacement, or installation.

This warranty only covers products that are properly installed, properly maintained, and properly operated in accordance with the instructions provided. This limited warranty does not cover any failures or operating difficulties due to normal wear and tear, accident, abuse, misuse, alteration, misapplication, improper installation, or improper maintenance and service by you or any third party.

Returned product will not be accepted without a Return Authorization number. To request a Return Authorization number, please visit us at www.royalsovereign.com. All transportation costs for the return of damaged product or parts will be the responsibility of the purchaser. Return defective product, in original packaging, to the address below.

Royal Sovereign International, Inc. requires reasonable proof of your date of purchase from an authorized retailer or distributor. Therefore, you should keep your receipt, invoice, or canceled check from the original purchase. The limited warranty shall be limited to the repair or replacement of parts which prove defective under normal use and service within the warranty period.

Royal Sovereign International, Inc. (and its affiliated companies) SHALL HAVE NO LIABILITY WHATSOEVER TO PURCHASER OR ANY THIRD PARTY FOR ANY SPECIAL, INDIRECT, PUNITIVE, INCIDENTAL, OR CONSEQUENTIAL DAMAGES. Some states do not allow the exclusion or limitation of incidental or consequential damages so the above exclusion and limitations may not apply to you.

ROYAL SOVEREIGN INTERNATIONAL, INC.

2 Volvo Dr., Rockleigh, NJ 07647 USA

TEL: (+1) 800-397-1025

Email: info@royalsovereign.com