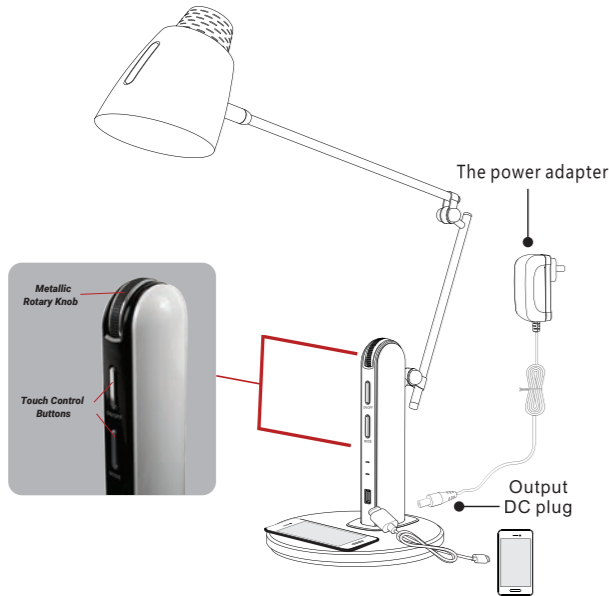




LED Desk Lamp RDL-210Qi

Product Overview



ON/OFF switch mode

- Press to turn on/off the lamp. It remains the last brightness & CCT when turn on the lamp again.

Rotating dimming mode

- In any color temperature, the user can rotate the knob for stepless dimming. Rotate the knob up for decreasing brightness, rotate it down for increasing brightness. When the brightness is no longer changing, that means the brightness is in its maximum or minimum state.

Three color temperature mode

- The first time you touch the **MODE** key, the lamp will be in nature light and all bright. Color temperature is 4000K(±300K). Rotate the knob to adjust the brightness.
- The second time you touch the **MODE** key, the lamp will be in warm light and all bright. Color temperature is 3000K(±300K). Rotate the knob to adjust the brightness.
- The third time you touch the **MODE** key, the lamp will be in cool light and all bright. Color temperature is 6000K(±300K). Rotate the knob to adjust the brightness.

Safety Warning

To reduce the risk of fire, electric shock or injury

1. Unplug the adapter if not in use for a long period of time.
2. Do not place your hands on the LED light, as this will become hot when in use.
3. Do not use with an extension cord.
4. Do not try to alter the plug.
5. Please use only indoors.
6. Do not look directly at the LED light to avoid damage to eyes.
7. Do not cover the product with a cloth, paper, or easily flammable material.
8. Place on a stable surface.
9. If light is off or flickering, please check if adapter and DC connection socket is secure. If they are and problem continues, please contact Royal Sovereign.

This instruction sheet is not meant to cover all possible conditions and situations that may occur. Caution and care must be used with any electrical product.

Cleaning

Before cleaning:

1. Ensure the LED Desk Lamp is unplugged
2. Use a damp cloth to clean the unit.
3. Do not immerse the unit in water.
4. Do not use detergent or abrasives for cleaning.

Operation

1. Place the LED Desk lamp at the desired location on a desk or table.
2. Place the power adapter plug into the power adapter input.
3. Connect the supplied power adapter into electrical outlet.
4. Turn ON/OFF the desk lamp
5. Use the control buttons to adjust: Brightness and Light Temperature (Warm, Bright, or Daylight)
6. Carefully adjust the tilt adjusting head to the desired position.

Qi Wireless Charging and USB Charging

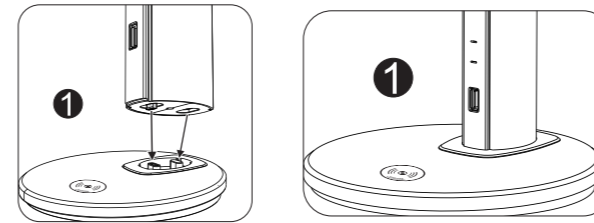
This lamp allows you to wirelessly charge your mobile phone. This device only charges Qi enabled devices. Please make sure your mobile device is Qi enabled prior to charging. To charge, simply place your mobile device on the charging platform. You may need to move the phone around on the base to find the correct positioning. If charging successfully, the indicator light will turn on. If cell phone case is too thick, it may effect the charging result.

This desk lamp also has a USB charging port. If you mobile device is not Qi enabled, you can plug your USB cord into the port.

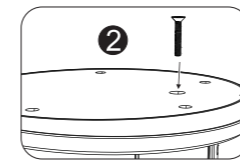
all bright. Color temperature is 6000K(±300K).
Rotate the knob to stepless adjust brightness.

Read and Save These Instructions

How to Set Up



1. Pull out the terminal from lamppost and insert it to the base. Insert the lamppost to the base afterward.



2. Tighten the base and lamppost with screw at the bottom side.

Note: In case you need to take apart the lamp, remove the screw and pull out the lamppost slightly and separate the terminal slowly.

Specifications

Feature	RDL-210Qi
Light Output	550 Lumens
Input Power	10 Watts
Light Color/Temperature	3000K, 4000K, 6000K
Material	ABS
Qi Output	5V, 500mA - 1000mA
Light Modes	Warm, Bright, Daylight
Adapter	100-240V AC 50/60 Hz
Dimensions	8.00" x 7.95" x 26.14" (203 x 202 x 664 mm)
Weight	4.60 lbs. (2.09kg)

Warranty

Royal Sovereign warrants this product to be free from defects in material and workmanship. Our obligation under this warranty is limited to the repair or replacement, free of charge, when delivered to an authorized Royal Sovereign service center, of any defective part(s) thereof, other than parts damaged in transit.

This warranty is in effect to the original purchaser, for a period of one year from the date of purchase and is not transferable. This warranty shall apply only if the product is used in accordance with the factory provided instructions which accompany it.

Exclusions

This warranty excludes and does not cover defects, malfunctions or failures of this product, caused by repairs by unauthorized persons or service centers, mishandling, improper installation, modification or unreasonable use including incorrect voltage, acts of God, or failure to provide reasonable and necessary maintenance. This warranty is in lieu of any and all expressed warranties. In no event shall Royal Sovereign be liable for consequential or incidental damages. This limitation would not apply if you live in a location that does not permit the exclusion of limitation of incidental or consequential damages.

ROYAL SOVEREIGN INTERNATIONAL, INC.

2 Volvo Dr., Rockleigh, NJ 07647 USA

TEL: +1) 800-397-1025

Email: info@royalsovereign.com

Because our products are subject to continuous improvement, Royal Sovereign reserves the right to modify product design and specification without notice and without incurring any obligation E&OE.