

TotalSense Series Outdoor Air Quality Sensor

Build a complete air quality system for indoor, duct, and outdoor
 Seven environmental sensors: PMx, VOC, CO2, RH, T, ambient light, barometric pressure
 BACnet/Modbus or analog outputs with set-point relay
 Pair with an IOTBuddy for BACnet IP or IOT Connection



DESCRIPTION

The TotalSense Series Outdoor AQ sensor provides more data for more advanced ventilation control while drastically reducing installation cost and time on a project. It includes a comprehensive selection of AQ sensing with carbon dioxide (CO2), relative humidity (RH), and temperature plus options for total volatile organic compounds (TVOC), barometric pressure and particulate matter (PM). This sensor is enclosed in an outdoor rated enclosure to protect electronics from rain, overhead watering systems and harmful UV rays.

APPLICATIONS

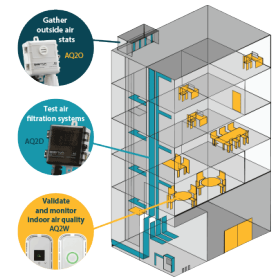
- Measure outdoor air quality for indoor/outdoor comparison to meet ASHRAE 62.1 standard for air quality
- Energy management/building control
- Contributes toward satisfying Feature A08 and T06 under the WELL Building Standard®
- Dual Channel CO2 version is perfect for greenhouses



Fully configurable display

★ ±30PPM CO2	★ TEMPERATURE
★ ±2% RELATIVE HUMIDITY	★ PARTICULATE MATTER
BAROMETRIC PRESSURE	TVOC
★ Industry leading accuracy. • NDIR CO2 element, ±30ppm, ±3% • ±2% relative humidity ppm.	AMBIENT LIGHT

Choose from to 7 environmental sensors

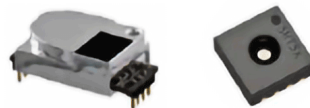


Build a full validation system

Built for building automation.

Available with analog or...

BACnet/Modbus protocols or up to 3 analog outputs



Replaceable CO2, RH, and temp sensors

Designed and manufactured in America
 World-class quality backed by seven year limited warranty

Made in USA; 7 year warranty on electronics

FEATURES

- NEW! Configuration App with Senva Sync
- Reduce installation costs with multiple sensors in a rugged, easy-mount outdoor enclosure
- Specify the exact product for your application with made in USA
- Sense unhealthy particulates or TVOC's
- Industry-leading temperature and barometric pressure compensated CO2 sensing with non-dispersive infrared sensing element (NDIR), 15+ year life expectancy on CO2 sensing element; ±30ppm, ±3% of reading
- Tamper-proof
- Field-replaceable RH, Temp, and CO2 sensors ease maintenance
- 7-year limited warranty / 3 years on CO2 sensor - 2 years on all others

ORDERING

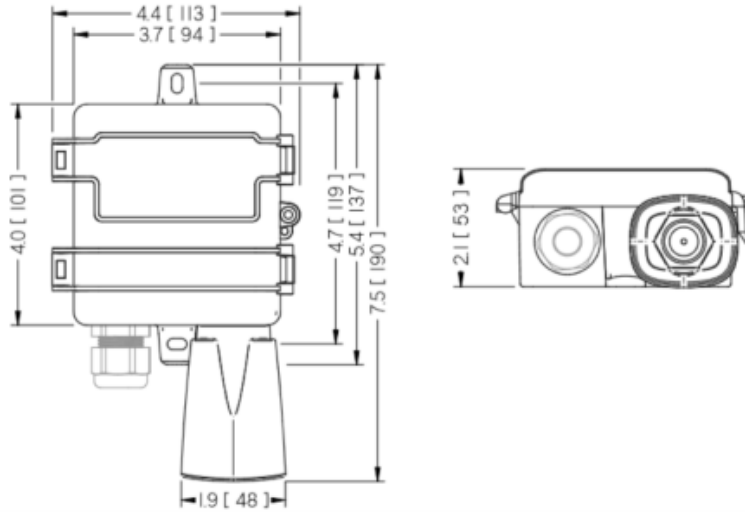
AQ2	<input type="checkbox"/>	-	<input type="checkbox"/>	<input type="checkbox"/>	<input type="checkbox"/>	<input type="checkbox"/>	<input type="checkbox"/>	<input type="checkbox"/>	<input type="checkbox"/>
Mounting Type	Output Type		CO2 Sensor	Humidity Sensor (RH)	Total Volatile Organic Compounds (TVOC)	Particulate Matter (PM)	Temperature***	Display	
O = Outdoor	A = Analog B = BACnet/Modbus		A = None D = Dual Channel CO ₂	A = None 2 = 2% RH Sensor	A = None V = TVOC	A = None C = CO* P = PM 1.0, 2.5, 4.0, 10.0 O = O ₃ ** Q = PM + O ₃ ** R = PM + CO* L = Ambient Light+	A = None B = Transmitter C = 100PtRTD D = 1000PtRTD E = 10K Type 2 F = 10K Type 3 G = 10K W/ 11K H = 3K I = 2K2 J = 1K8 K = 20K	X = None D = OLED Display	


* CO sensor only available with display for calibration purposes.
 ** Ozone (O3) only available with Temp/RH for calibration purposes
 *** Choose Transmitter option for OLED temperature display and temperature readings over BACnet/Modbus.
 Thermistor versions not available to display on OLED or to read over BACnet/Modbus.
 + Ambient light is only available on select models with temp and RH, consult factory.

Example Mount Output CO₂ RH TVOC PM Temp Display
 AQ2 -

(TotalSense outdoor sensor with BACnet/Modbus RS-485, Temp, Dual Channel CO₂, 2% RH, VOC, PM, 10K Type 3 Temp, OLED Display)

DIMENSIONS



 **Warning:** The datasheet is designed for reference only. Refer to installation instructions that accompany the product and heed all safety instructions. Product improvement is a continuing process at Senva. Changes may occur to products without prior notice.

SPECIFICATIONS

** Product improvement is a continual process at Senva and product features and specification may change without prior notice. Refer to instructions that accompany the product for installation and wiring.*