

## *Cuvée Rothschild*



*Fine dining restaurants, hotels, bars and even casual restaurants offer wine to their customers. For quick and convenient access to wine, nothing compares to wine reach-in refrigerator units. These medium and large size, attractive, and functional refrigerators are not only designed to conveniently and adequately store wine, but commercial wine coolers also operate at the highest efficiency to keep wine and beverages at the ideal temperature. In addition to all types of restaurant equipment , we offer a diverse selection of wine fridges from which you can choose to best suit your business operation.*

# LCS140VN2Z2D

## 198 Bottle Dual Zone Wine Fridge - 438L

Cuvee Rothschild



### Features

**Up to 220 Bottle Capacity (configuration full Wine)**  
**Up to 99 Bottle + 227 cans (configuration Half wine / Half beverage)**  
 • Perfect capacity for professional use. 2 separate doors: Wine bottle & beverage fridge.

**Top compartment : Beech Wooden Shelves & Anti-Vibration System**  
 • 4 wire shelves with horizontal bottle placement for a premium look and feel, while assist in reducing vibration and allowing maximum use of internal space for your comfort

**Low compartment : Tempered glass shelves**  
 • 4 glass shelves to stores all kind of beverage, water, beer soda. 250ml , 330ml , 500ml

**Double layer tempered glass**  
 • Protect your wine collection from harmful UV rays, while keeping the interior insulated and moisture out

**Precise Temperature & Humidity Control System**  
 • Digital LED display and intuitive digital control to monitor and adjust for optimal temperature and humidity with just a touch of your fingertips

**Dual zone with separate doors**  
 • It gives you the flexibility to keep your wine and beverages at the optimal serving temperatures so you're ready to serve for every taste and occasion

**Safety Lock & Charcoal filter**  
 • Charcoal filter will help cleaning the internal air. Safety lock to protect your bottles

**Customizable**  
 • You can also customize your fridge, full wine fridge or full beverage fridge by buying the necessary additional shelves



#### Dual Zone

Store your white wine and red wine at the correct temperature



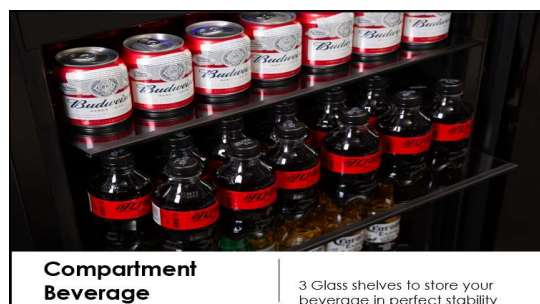
#### LOGO

3D elegant logo



#### Compartment Wine

Store your white wine and red wine at the correct temperature



#### Compartment Beverage

3 Glass shelves to store your beverage in perfect stability

# LCS140VN2Z2D

## 198 Bottle Dual Zone Wine Fridge - 438L

Cuvee Rothschild

### Features

- 220 standard bottle size capacity
- 438L fridge capacity\*
- Free-standing or built-in installation
- Dual Zone (5-20°C)
- SN / N / ST Climate class
- Double layer tempered glass door
- Digital LED temperature & humidity control system
- 4 beech wood trim telescopic shelves (wine fridge section)+ 4 glass shelves (beverage section)
- Anti-vibration system
- High efficiency compressor
- No frost system
- Quiet operation 45 dB(A)
- 2 Adjustable feet
- Charcoal filter included
- Lock
- Stainless steel handle
- Noise level 45 dB(A)
- 220-240W / 50Hz

### Aesthetics

- Slim black door front
- Recessed handle
- Kickplate
- Blue LED light
- Inside temperature control display
- Door not reversible
- 2 Adjustable front feet

### Warranty

- Two (2) year parts and labor
- \*Extend your warranty by registering your product [lecavist.com](http://lecavist.com)*

### Product Dimensions & Weight

- Outside: 595 (W) x 1870 (H) x 680 (D) mm
- Weight: 120kg

### Shipping Dimensions & Weight

- Dimensions: 620 (W) x 1920 (H) x 700 (D) mm
- Weight: 125kg

*\*Standard bottle size is the Bordeaux size which covers 90% of wine bottles*



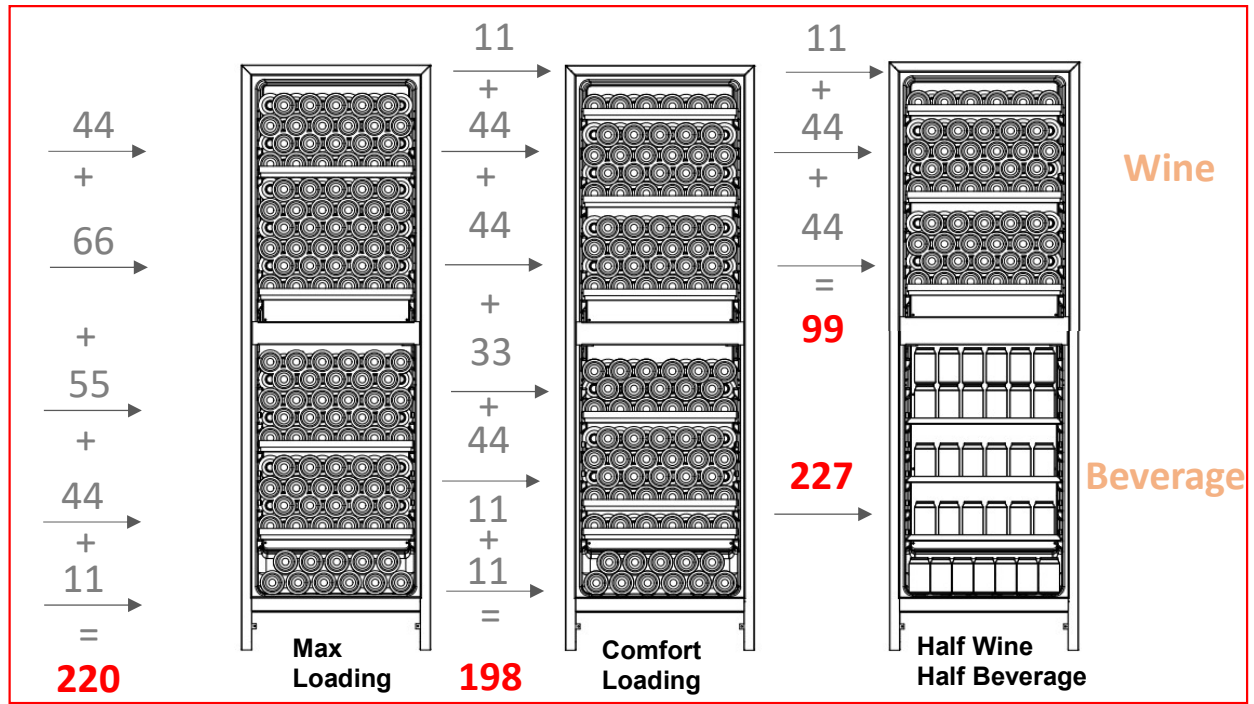
Actual color may vary. Design, specifications, and color availability are subject to change without notice, check [lecavist.com](http://lecavist.com) for up-to-date information. © Lecavist | Australia  
JUN22.V01

# LCS140VN2Z2D

198 Bottle Dual Zone Wine Fridge - 438L

Cuvee Rothschild

## Bottle Loading Capacity



## Ideal Whine Temperature

- Amarone Classic Dry Red Wine 17°C
- Amarone Classic Dry Red Wine 17°C
- Barbaresco Wine 17°C
- Barolo Wine 17°C
- Beaujolais Wine 13°C
- Bordeaux Blanc 6°C
- Dry white wine 8°C
- Bordeaux Red Wine 17°C
- White Burgundy 11°C
- Red Burgundy 18°C
- Brunello Wine 17°C
- Champagne 6°C
- Chianti Classico 16°C
- Languedoc-Roussillon 13°C
- Passito di Pantelleria 6°C
- Provence Rose 12°C
- Sweet Sparkling Wine 6°C
- Verdicchio di Matelica 8°C
- Verdicchio dei Castelli di Jesi 8°C
- Trentino White Wine 11°C
- Franciacorta White Wine 11°C
- Aromatic White 10°C
- Fruity Dry White 8°C
- Friulano Venetian Julia White Wine 11°C
- Rodano White Wine 15°C
- Loire Dry White Wine 10°C
- Loire Liqueur Wine 10°C
- Loire Red Wine 14°C
- Passito Liqueur Wine 8 - 18°C
- Rose Wine, New Wine 12°C
- Light Red Wine with Malt Tannins 14°C
- Red Wine with a Little of Tannins 16°C

Actual color may vary. Design, specifications, and color availability are subject to change without notice, check [lecast.com](http://lecast.com) for up-to-date information. © Lecavist | Australia  
JUN22.V01