



XJ Rear Leaf Spring and Shackle Hanger Replacement Brackets Installation Instructions

Thank you for purchasing this product!

Installation Notes:

- A qualified welder is recommended to install these brackets.
- We recommend using a spot weld cutter to remove the spot welds on the factory brackets.
- Some flanges may need to be modified to fit the frame of your Jeep Cherokee; it is very easy to deform the frame when removing the factory brackets.

Tools required:

- | | |
|---|--|
| <ul style="list-style-type: none"> • 3/8" Spot Weld Cutter • Welder • Grinder with Cut-off wheel and Flap Disc | <ul style="list-style-type: none"> • 21 MM Socket and Wrench • 10 MM Socket • 9/16" Socket and Wrench • Plasma Cutter or Torch |
|---|--|

Contents of each box

| Bill Of Materials For B4WK12825 Jeep XJ Rear Leaf Spring and Shackle Hanger Replacement Bracket Kit | | | |
|---|-------------------|-------------|---|
| QTY | Part Number | Etch Number | Description |
| 1 | B4W188A91 | A91 B | XJ Leaf Spring Outer Bracket Passenger |
| 1 | B4W188A92 | A92 B | XJ Leaf Spring Inner Bracket Passenger |
| 1 | B4W188A93 | A93 B | XJ Leaf Spring Outer Bracket Driver |
| 1 | B4W188A94 | A94 B | XJ Leaf Spring Inner Bracket Driver |
| 1 | B4W188A95 | A95 B | XJ Shackle Hanger Outer Bracket Passenger |
| 1 | B4W188A96 | A96 B | XJ Shackle Hanger Inner Bracket Passenger |
| 1 | B4W188A97 | A97 B | XJ Shackle Hanger Outer Bracket Driver |
| 1 | B4W188A98 | A98 B | XJ Shackle Hanger Inner Bracket Driver |
| 4 | .140CNNE0Y/985-10 | N/A | M14-2.0 Nylock Nut Class 10 Yellow Zinc |

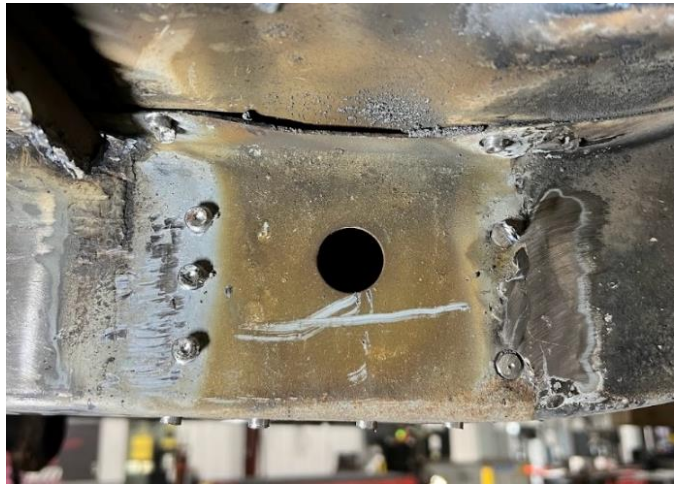
Step 1:

Make sure your vehicle is parked on a flat, level surface and the rear of the vehicle is lifted with the axle supported so the rear leaf springs can be removed. Starting on the driver side, remove the leaf spring from the front mount and remove the rear shackle.

Step 2:

Now remove the leaf spring mount. Cut the outside face off the leaf spring mount as marked below, this will give you access to the spot welds. Do not remove all of the outside bracket, just cut right below the floorboard. Once that is removed, remove the rest of the factory bracket.

*Note: Make sure to drill out all the spot welds and grind down all the other welds before trying to remove the brackets, you can and will rip the frame.



Step 3:

Grind down any spot welds and grind back the outside face of the factory bracket until the new replacement bracket fits properly.



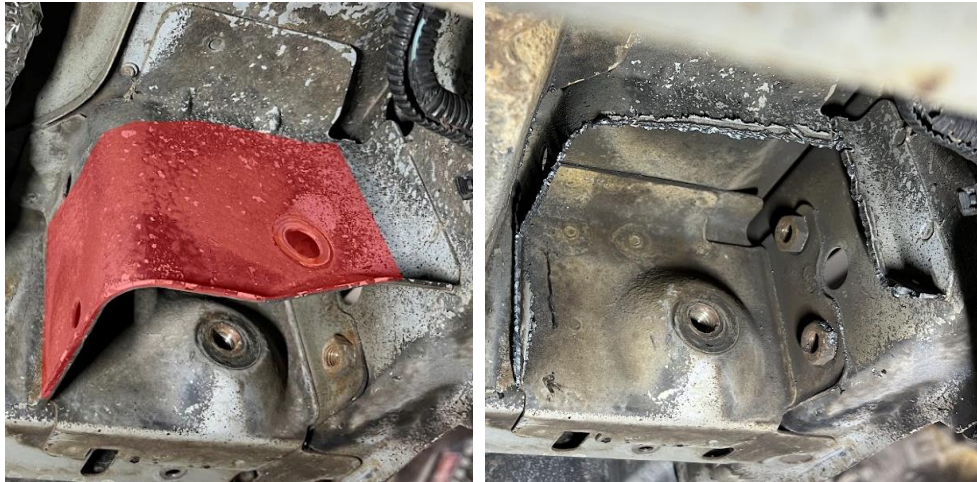
Step 4:

Align the replacement leaf spring brackets bolt hole with the cutout in the frame. With the bracket in the correct location, tack the bracket in place. Check for the fitment of the leaf spring. Completely weld the brackets together and to the frame, make sure to fill each spot weld location.

Step 5:

Now remove the shackle hanger. You can remove the filler neck guard if needed, be mindful of sparks around this area. Cut the outside face off the rear shackle hanger, this will give you access to the spot welds. Once that is removed, remove the rest of the factory bracket.

**Note:* Make sure to drill out all the spot welds and grind down all the other welds before trying to remove the brackets, you can and will rip the frame.



Step 6:

Grind down all the spot welds on the frame. Test fit the new replacement shackle hanger on the frame.



Step 7:

Once satisfied with the fitment, tack the brackets to the frame and to each other. Check the width of the new bracket by test fitting the shackle in the bracket. Completely weld the brackets together and to the frame, make sure to fill each spot weld location.



Step 8:

Trimming or bending of the filler neck guard may be necessary during reinstallation.



Step 9:

Repeat Steps 1-7 on the passenger side. Once the brackets are fully installed, reinstall the shackles and leaf springs using the provided M14 Nylock nuts and the factory bolts.

Congratulations! You have finished the installation of the Barnes 4WD XJ Rear Leaf Spring and Shackle Hanger Replacement Brackets.

Professional Services Disclaimer:

The content of all pages of this website (collectively, the "Website"), such as text, graphics, images, information and other material (collectively, "Content") is for informational purposes only. Any information furnished on this Website is not intended nor implied to be automotive advice and is not intended to replace personal consultation with a qualified automotive service technician, mechanic, or similar automotive professional.

Barnes 4WD has not examined the Content for accuracy, timeliness, completeness, appropriateness, or helpfulness. Barnes 4WD does not endorse any specific tests, products, procedures, opinions, or other information that may be mentioned on this Website. Your reliance upon information and Content obtained by you at or through this Website is solely at your own risk. IN NO EVENT SHALL BARNES 4WD BE LIABLE OR OTHERWISE RESPONSIBLE FOR ANY DAMAGE OR INJURY (INCLUDING DEATH) TO YOU, OTHER PERSONS, OR PROPERTY ARISING FROM ANY USE OF ANY PRODUCT, INFORMATION, IDEA, OR INSTRUCTION CONTAINED IN THE CONTENT.

BARNES 4WD DOES NOT MAKE ANY REPRESENTATION OR WARRANTY, EXPRESS OR IMPLIED, AT LAW OR IN EQUITY, WITH RESPECT TO ANY PRODUCT FEATURED ON THE WEBSITE, INCLUDING WITHOUT LIMITATION WITH RESPECT TO MERCHANTABILITY, FITNESS FOR ANY PARTICULAR PURPOSE, VALUE, VALIDITY, OR ENFORCEABILITY, AND ANY AND ALL SUCH OTHER REPRESENTATIONS OR WARRANTIES ARE HEREBY EXPRESSLY DISCLAIMED.