

Installation Instructions

JK Vacuum Pump Relocation Kit



- This kit requires cutting of the factory bracket off from the frame. Use all necessary safety precautions!

Tool Needed:

- Grinder with cut-off wheel or other appropriate metal cutting device
 - 5mm hex wrench
 - 16mm socket with ratchet
 - 10mm combination wrench

Step 1:

Remove all hoses and wires connected to the vacuum pump. Start with the large hose with the green retaining clip. The green retaining clip will need to be pulled downward in order to pull the hose off from the vacuum pump. Next remove the small hose on the back of the pump, the hose will slide off with minimal effort. Unplug the electrical plug from the harness on the pump.

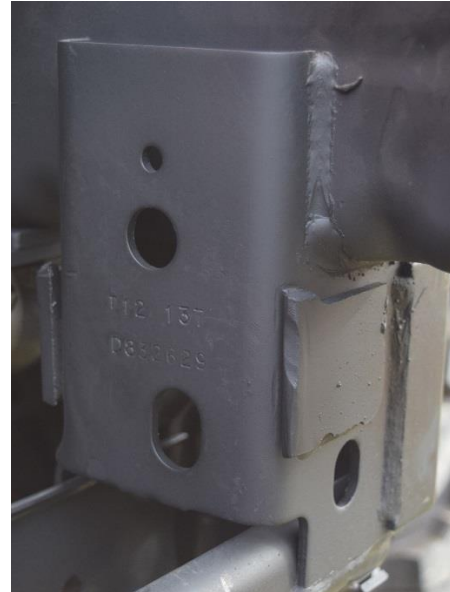


Step 2:

Remove the 2 10mm nuts that hold the pump to the bracket and remove the pump. Save the nuts, they will be reused later in the installation!

Step 3:

Using an appropriate cutting tool remove the factory bracket from the frame. An angle grinder with a cut off wheel is often the easiest tool to use for this. Mark the bracket so the cuts will be flush with the face of the frame (see image below). Paint the bare metal to prevent future corrosion.



Step 4:

The rubber spacers on the pump will need to be flipped over. Remove the spacers from the pump, push the metal sleeves in the spacers out and reinstall them in the opposite orientation that they were removed. Reinstall the spacers in the pump in the opposite orientation that they were removed.





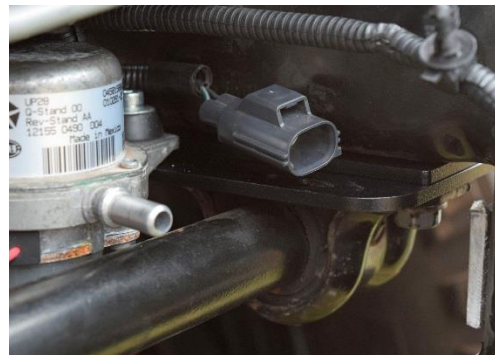
Step 5:

Using a 5mm hex wrench and a 10mm combination wrench install the pump in the bracket with the hardware provided in the kit and the nuts that you saved in step 2.



Step 6:

Loosen the 4 sway bar bracket bolts on the front of the frame of the Jeep with a 16mm socket. These bolts do not need to be removed only loosened enough to facilitate the install of the bracket and the spacers. Install the thick spacer on the passenger side of the Jeep between the sway bar bracket and the frame. On the passenger side of the Jeep install the bracket with the thin spacer on top in the same position. Tighten the bolts after the spacers and brackets have been installed.



Step 7:

Reconnect all of the hoses and electrical connections that were disconnected in step 1. There are 2 holes provided in the bracket that the electrical plug will snap into to hold the plug. Verify clearance to all components of the Jeep. Some aftermarket pitman arms can contact the hose on the rear of the pump, the hose may need to be secured away from the pitman arm with zip ties.



Congratulations!

You have completed the installation of your vacuum pump relocation kit.

Professional Services Disclaimer:

The content of this Website, such as text, graphics, images, information and other material (collectively, "Content") is for informational purposes only. Any information furnished on this Website is not intended nor implied to be automotive advice and is not intended to replace personal consultation with a qualified automotive service technician, mechanic or similar automotive professional.

Barnes 4WD has not examined the Content for accuracy, timeliness, completeness, appropriateness, or helpfulness. Barnes 4WD does not endorse any specific tests, products, procedures, opinions, or other information that may be mentioned on this Website. Your reliance upon information and Content obtained by you at or through this Website is solely at your own risk. IN NO EVENT SHALL BARNES 4WD BE LIABLE OR OTHERWISE RESPONSIBLE FOR ANY DAMAGE OR INJURY (INCLUDING DEATH) TO YOU, OTHER PERSONS, OR PROPERTY ARISING FROM ANY USE OF ANY PRODUCT, INFORMATION, IDEA, OR INSTRUCTION CONTAINED IN THE CONTENT.