

## Jeep Wrangler JL license plate and backup camera relocation kit installation instructions

*Thank you for purchasing our Jeep Wrangler JL license plate and backup camera relocation kit!*

### Installation Notes:

- This kit requires the removal of your factory spare tire and mounting bracket.
- Some of your factory hardware will be used to install this kit. Do not discard any hardware until installation is complete.
- It is recommended to test fit all components to check for proper fit, before painting or powder-coating.

### Tools required:

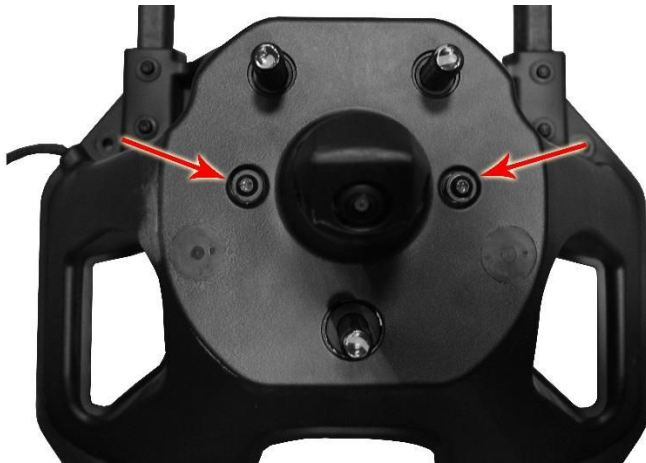
- Ratchet and socket set
- Torx driver set
- Soft faced hammer

### Step1:

Remove the camera bezel and spare tire from the Jeep. Unplug the wiring harness for the spare tire carrier from the Jeep. Remove the spare tire carrier.

### Step 2:

Remove the two torx head bolts that hold the camera assembly in the tire carrier. After the bolts have been removed, push the lug studs and the plate they are attached to free from the carrier. Caution! the plate cannot be entirely removed at this point, the wiring for the camera is routed through the center of the plate.



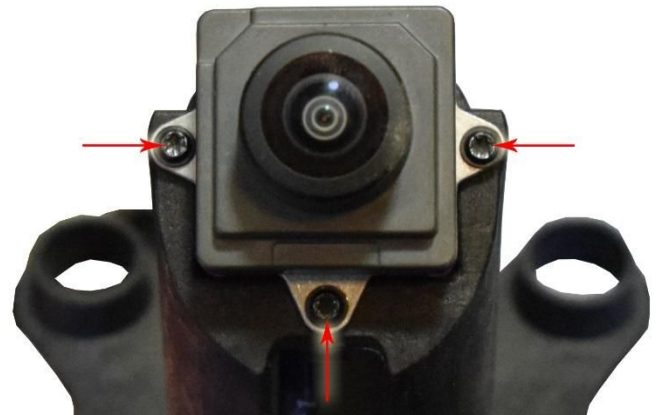
### Step 3:

Remove the camera bracket from the tire carrier. Press on the plastic area that surrounded the wheel studs to free the camera bracket from the spare tire carrier. A light tap with a soft hammer may be required to free the assembly.



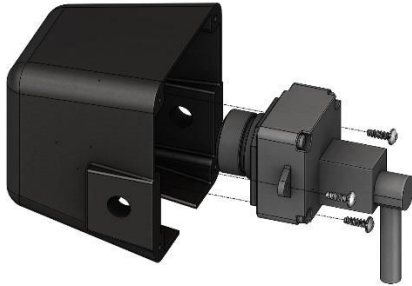
### Step 4:

Remove the 3 small torx head screws that retain the camera to the bracket, the screws will be re-used, do not discard. Unplug the cable from the back of the camera.



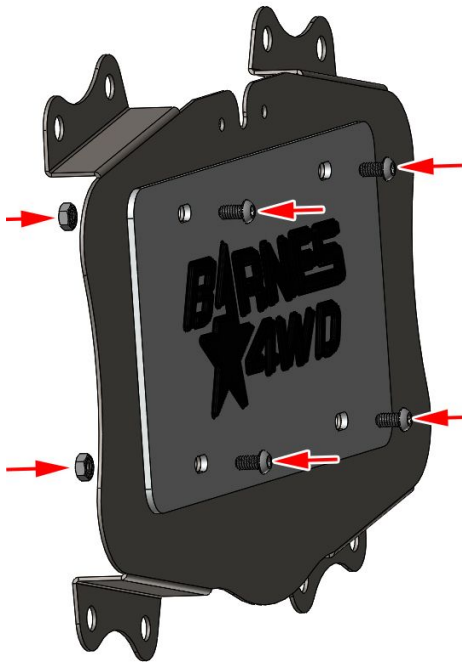
Step 5:

Place the camera in the supplied housing and install the three screws that were removed in the previous step.



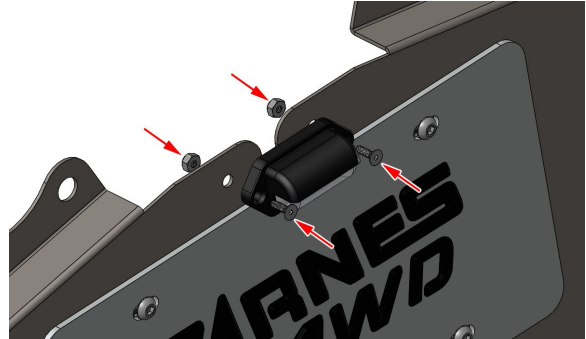
Step 6:

Using the 4 provided  $\frac{1}{4}$ " x  $\frac{1}{2}$ " button head bolts and  $\frac{1}{4}$ " nuts attach the license plate to the delete panel.



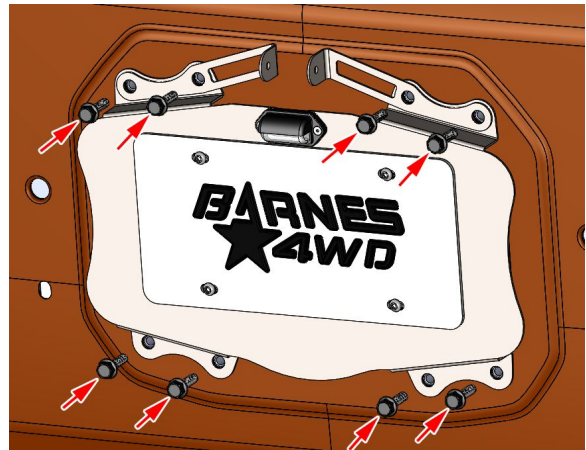
Step 7:

Install the license plate light with the 2 provided #6 countersunk bolts and locknuts.



Step 8:

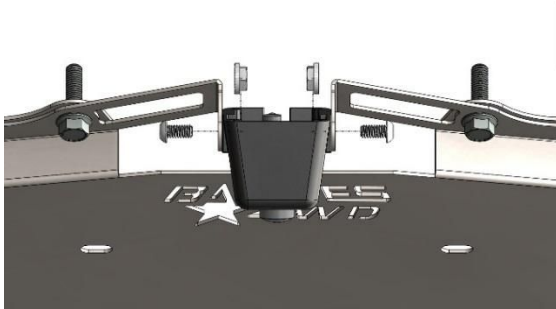
Reusing the hardware that was removed from the factory tire carrier. Place the license plate bracket on the tailgate and loosely install the bottom bolts. Place the two camera brackets at the top holes and loosely install the bolts.



OTHER PERSONS, OR PROPERTY ARISING FROM ANY USE OF ANY PRODUCT, INFORMATION, IDEA, OR INSTRUCTION CONTAINED IN THE CONTENT.

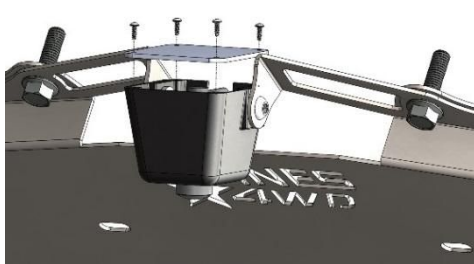
### Step 9:

Place the camera housing assembly between the two brackets and install the two provided ¼" bolts and nuts.



### Step :

Plug the cable back into the camera and route the cable behind the tailgate plate, and back into the hole in the tailgate. Place the aluminum back plate on the camera housing and install the 4 screws. Adjust the camera to the desired angle and tighten all hardware.



Congratulations you have now completed the installation of you license plate and backup camera relocation kit!

#### Professional Services Disclaimer:

The content of this Website, such as text, graphics, images, information and other material (collectively, "Content") is for informational purposes only. Any information furnished on this Website is not intended nor implied to be automotive advice and is not intended to replace personal consultation with a qualified automotive service technician, mechanic or similar automotive professional.

Barnes 4WD has not examined the Content for accuracy, timeliness, completeness, appropriateness, or helpfulness. Barnes 4WD does not endorse any specific tests, products, procedures, opinions, or other information that may be mentioned on this Website. Your reliance upon information and Content obtained by you at or through this Website is solely at your own risk. IN NO EVENT SHALL BARNES 4WD BE LIABLE OR OTHERWISE RESPONSIBLE FOR ANY DAMAGE OR INJURY (INCLUDING DEATH) TO YOU,