

Jeep TJ OEM Rear Axle Upper Control Arm and Track Bar Brackets

Thank You for Purchasing Barnes4WD

Jeep TJ OEM Rear Axle Upper Control Arm and Track Bar Brackets

Installation Notes:

- These brackets are designed to replace the OEM Jeep TJ rear axle upper control arms and track bar bracket.
- These brackets fit 1997-2006 Jeep Wrangler TJ and 2003-2006 Jeep Wrangler LJ
- Installation of this product requires a trained welder
- Removal of existing bracketry is required for installation
- Refer to your vehicle's factory service manual for removal of any factory components

Tools Required:

- Welding machine with the capability of welding at least 1/4" steel.
- Proper cutting tool (grinder with cut off wheel, plasma cutter, cutting torch, etc.)
- Tape Measure
- Angle Finder
- Jack Stands

Step 1:

Park the Jeep on a level surface and unbolt rear upper control arms and track bar at the axle.

Step 2:

Remove the rear axle from the jeep. Refer to your factory service manual for removal of all the factory components.

Step 3:

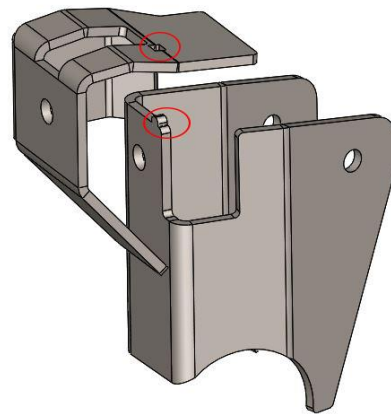
Using the proper cutting tool Remove the OEM rear axle upper control arms and track bar bracket.

Step 4:

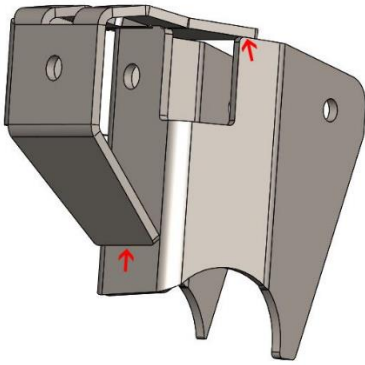
Once the upper control arm and track bar brackets are removed. Secure the axle on jack stands.

Step 5:

Assemble the rear upper control arm and track bar mount. Place the track bar mount cap on the driver rear axle upper control arm mount. Use the cut out in the cap and locate it on tab of the rear axle upper control arm mount. See picture below.

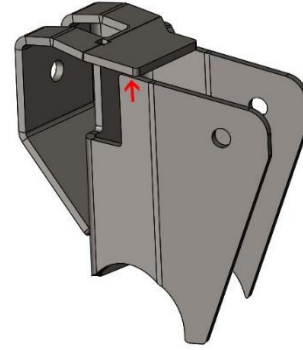


Once located tack weld the cap in place.



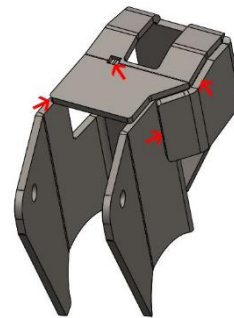
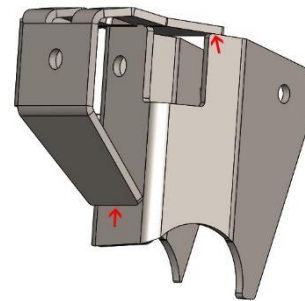
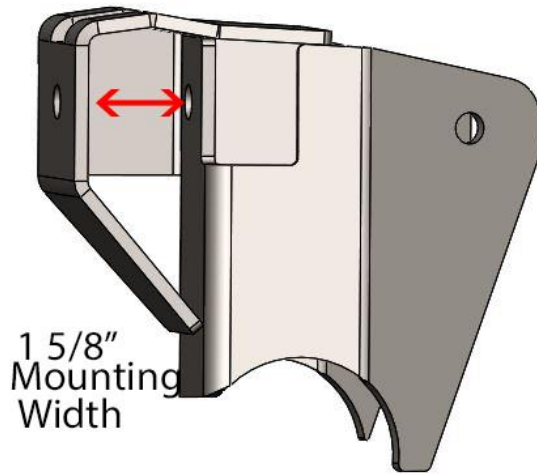
Step 7:

With the measurements confirmed from step 6 fully weld the track bar cap to the upper control arm bracket.



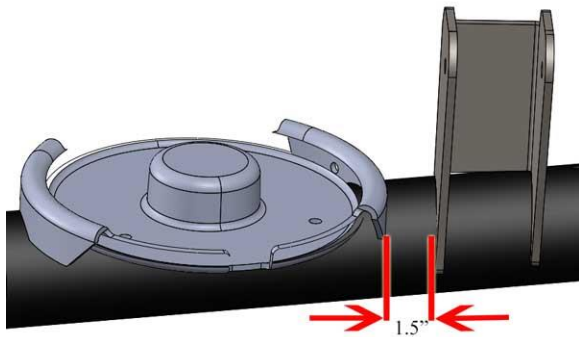
Step 6:

Confirm mounting width for track bar mount is 1 5/8" and the bolt holes line up. You can do this by placing the track bar in the bracket and inserting the bolt through the assembly.



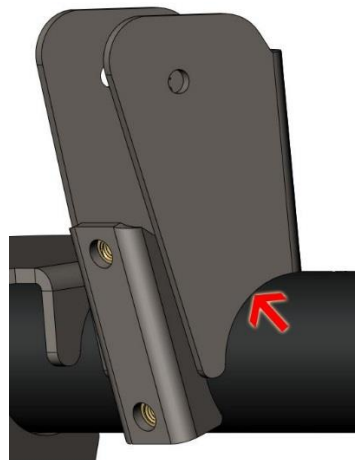
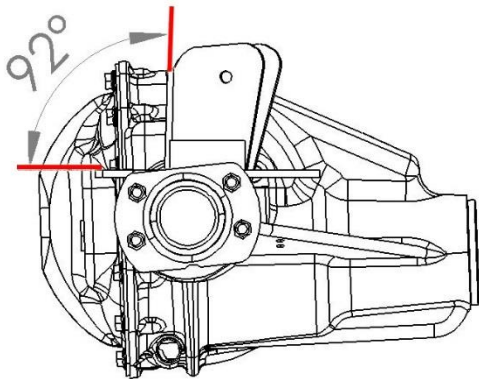
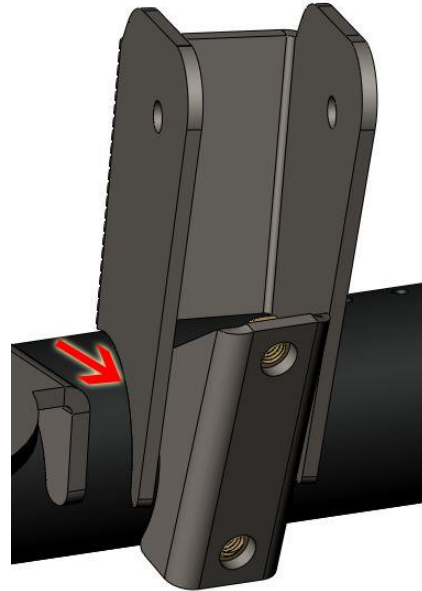
Step 8:

Place the passenger upper control arm bracket on the axle. The outside of the bracket should be 1.5" from the outside of the coil spring bucket. The bracket should be 92° off the coil spring bucket. See pictures below.



Step 9:

Once the passenger upper control arm bracket is in its desired location tack weld it into place in the locations shown in the picture below. Repeat steps 8 and 9 for the driver's side upper control arm on the opposite side of the axle.



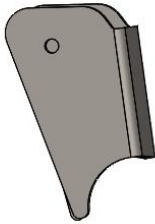
Step 10:

Once both upper control arms and track bar brackets are in desired location. Install the axle in the jeep and cycle the suspension to check for clearance to all parts of the jeep and axle. Once the axle has been test fit go back and fully weld in all the places that were tacked in previous steps.

Congratulations!

You have completed installation of your
Jeep TJ OEM Rear Axle Upper Control Arm
and Track Bar Brackets

Parts Included in Kit:



B4W188406
Jeep TJ Passenger
Rear Axle Upper
Control Arm
Bracket



B4W188395
Jeep TJ Driver
Rear Axle
Upper Control
Arm Bracket



B4W188396
Jeep TJ Rear Axle
Track Bar Mount
Cap

Professional Services Disclaimer:

The content of all pages of this website (collectively, the "Website"), such as text, graphics, images, information and other material (collectively, "Content") is for informational purposes only. Any information furnished on this Website is not intended nor implied to be automotive advice and is not intended to replace personal consultation with a qualified automotive service technician, mechanic, or similar automotive professional. Barnes 4WD has not examined the Content for accuracy, timeliness, completeness, appropriateness, or helpfulness. Barnes 4WD does not endorse any specific tests, products, procedures, opinions, or other information that may be mentioned on this Website. Your reliance upon information and Content obtained by you at or through this Website is solely at your own risk. IN NO EVENT SHALL BARNES 4WD BE LIABLE OR OTHERWISE RESPONSIBLE FOR ANY DAMAGE OR INJURY (INCLUDING DEATH) TO YOU, OTHER PERSONS, OR PROPERTY ARISING FROM ANY USE OF ANY PRODUCT, INFORMATION, IDEA, OR INSTRUCTION CONTAINED IN THE CONTENT. BARNES 4WD DOES NOT MAKE ANY REPRESENTATION OR WARRANTY, EXPRESS OR IMPLIED, AT LAW OR IN EQUITY, WITH RESPECT TO ANY PRODUCT FEATURED ON THE WEBSITE, INCLUDING WITHOUT LIMITATION WITH RESPECT TO MERCHANTABILITY, FITNESS FOR ANY PARTICULAR PURPOSE, VALUE, VALIDITY, OR ENFORCEABILITY, AND ANY AND ALL SUCH OTHER REPRESENTATIONS OR WARRANTIES ARE HEREBY EXPRESSLY DISCLAIMED.