



Jeep JL Rear Axle Trackbar Bracket Installation Instructions

Thank you for purchasing our Jeep JL Rear Axle Trackbar Bracket!

Installation Notes:

- This bracket is designed to replace the OEM JL Rear Axle Trackbar Bracket.
- This bracket fits 2018-Current Jeep Wrangler JL
- Installation of this product requires a trained welder.
- Cutting off existing bracketry is required for installation.
- Refer to your vehicle's factory service manual for removal of any factory components.

Tools required:

- Welding machine with the capability of welding at least ¼" steel.
- Proper cutting tool (Grinder with cut off wheel, plasma cutter, cutting torch, etc.)
- Tape Measure
- Angle Finder

Bill of Materials			
QTY	Part Number	Etch Number	Description
1	B4W250836	836 B	JL Rear Axle Track Bar Bracket
1	B4W250765	765 B	JL Rear 14 Bolt Swap Trackbar Bracket Main
1	B4W188812	812	JL Rear Axle Trackbar Bracket Gusset

Step 1:

Park the Jeep on a level surface and remove the rear trackbar.

Step 2:

Measure the location of the OEM brackets on the axle. Make a note of these measurements the Barnes 4WD Jeep JL Rear trackbar Bracket will need to be in the same location as the OEM bracket.

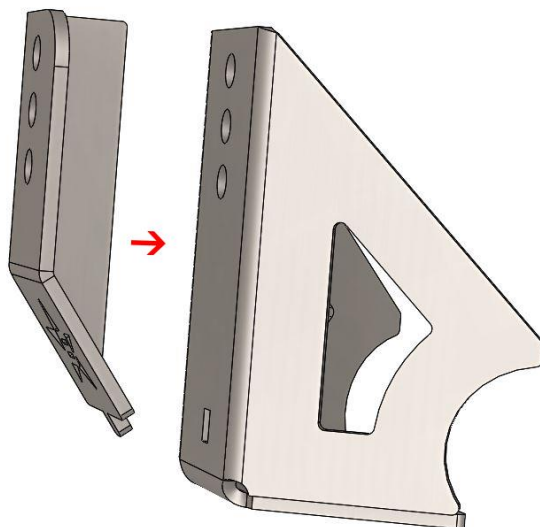
Step 3:

Using the proper cutting tool remove the OEM Rear Axle Trackbar Bracket by cutting in the locations shown below.



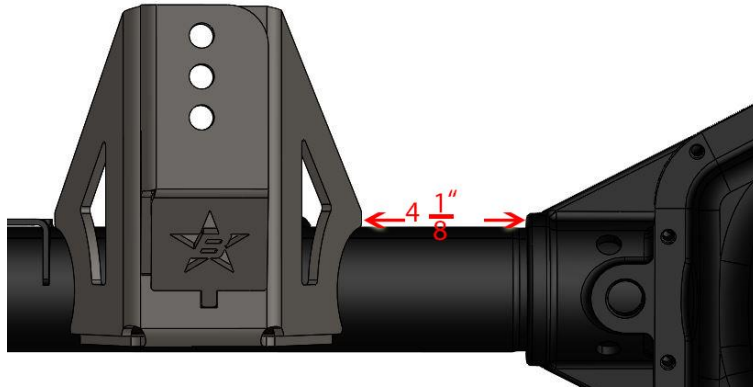
Step 4:

Assemble the two halves of the trackbar bracket as shown in the picture below and tac weld together.



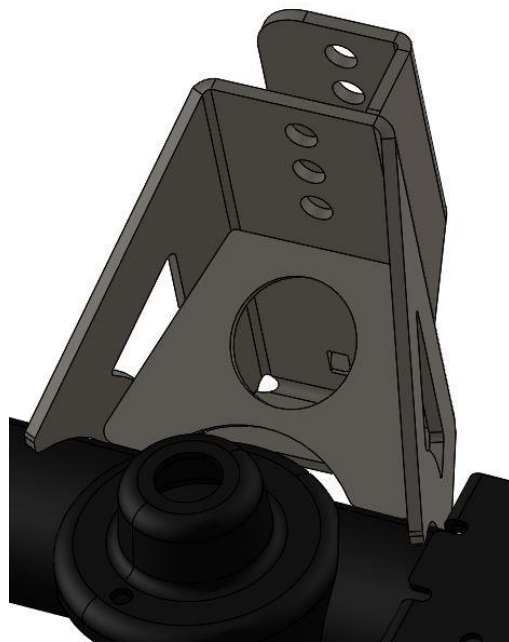
Step 5:

Place the new Barnes4wd trackbar bracket on the axle in the same location as the old trackbar bracket. The bracket should be $4 \frac{1}{8}$ " from the center section of the axle and perpendicular to the ground.



Step 6:

Place the gusset inside the track bar bracket as shown below and tack in place.



Step 7:

Tack the bracket into place and test fit the track bar. Cycle the suspension to check for clearance issues. The top of the bracket may need to be trimmed depending on what lift height you have.

Step 8:

Remove the track bar and fully weld the bracket together and to the axle.

Congratulations! You have Completed Installation of your Barnes 4wd Jeep JL Rear Trackbar Bracket.

Professional Services Disclaimer:

The content of all pages of this website (collectively, the "Website"), such as text, graphics, images, information and other material (collectively, "Content") is for informational purposes only. Any information furnished on this Website is not intended nor implied to be automotive advice and is not intended to replace personal consultation with a qualified automotive service technician, mechanic, or similar automotive professional.

Barnes 4WD has not examined the Content for accuracy, timeliness, completeness, appropriateness, or helpfulness. Barnes 4WD does not endorse any specific tests, products, procedures, opinions, or other information that may be mentioned on this Website. Your reliance upon information and Content obtained by you at or through this Website is solely at your own risk. IN NO EVENT SHALL BARNES 4WD BE LIABLE OR OTHERWISE RESPONSIBLE FOR ANY DAMAGE OR INJURY (INCLUDING DEATH) TO YOU, OTHER PERSONS, OR PROPERTY ARISING FROM ANY USE OF ANY PRODUCT, INFORMATION, IDEA, OR INSTRUCTION CONTAINED IN THE CONTENT.

BARNES 4WD DOES NOT MAKE ANY REPRESENTATION OR WARRANTY, EXPRESS OR IMPLIED, AT LAW OR IN EQUITY, WITH RESPECT TO ANY PRODUCT FEATURED ON THE WEBSITE, INCLUDING WITHOUT LIMITATION WITH RESPECT TO MERCHANTABILITY, FITNESS FOR ANY PARTICULAR PURPOSE, VALUE, VALIDITY, OR ENFORCEABILITY, AND ANY AND ALL SUCH OTHER REPRESENTATIONS OR WARRANTIES ARE HEREBY EXPRESSLY DISCLAIMED.