



Jeep JL Rear Axle Lower Control Arm Brackets Installation Instructions

Thank you for purchasing our Jeep JL Rear Lower Control Arm Brackets!

Installation Notes:

- This bracket is designed to replace the OEM JL Rear Axle Lower Control Arm Brackets.
- This bracket fits 2018-Current Jeep Wrangler JL
- Installation of this product requires a trained welder.
- Cutting off existing bracketry is required for installation.
- Refer to your vehicle's factory service manual for removal of any factory components.
- If you choose to move the rear shocks and sway bar up 2". You will need to make sure that you are using the correct shocks for this application and verify that you are bottoming out on your bump-stops before bottoming out your shocks.

Tools required:

- Welding machine with the capability of welding at least ¼" steel.
- Proper cutting tool (Grinder with cut off wheel, plasma cutter, cutting torch, etc.)
- Tape Measure
- Angle Finder

Bill of Materials			
QTY	Part Number	Etch Number	Description
1	B4W250834	834 B	JL Rear Axle LCA Bracket Driver
1	B4W250835	835 B	JL Rear Axle LCA Bracket Passenger
1	B4W250760	760 B	JL Rear 14 Bolt Swap Shock Bracket Driver
1	B4W250761	761 B	JL Rear 14 Bolt Swap Shock Bracket Passenger
2	B4W250684	684	JK 14B Swap Sway Bar Tab
1	B4W250692	692 B	JK 14B Swap Left LCAM Skid
1	B4W250693	693 B	JK 14B Swap Right LCAM Skid
2	B4W250728	723	JK 14B Swap 2" Up LCAM Skid

Step 1:

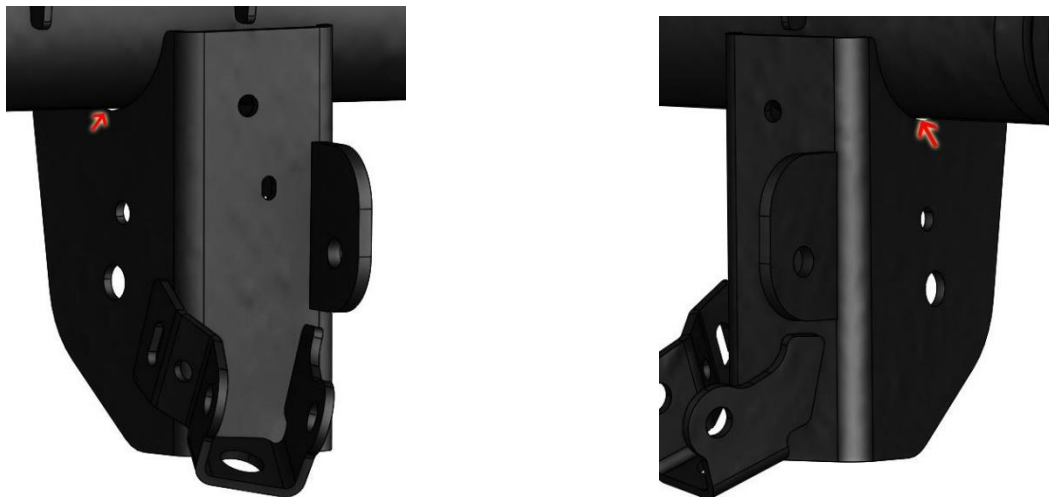
Park the Jeep on a level surface and remove the rear lower control arms, rear shocks and rear sway bar.

Step 2:

Measure the location of the OEM brackets on the axle. Make a note of these measurements the Barnes 4WD Jeep JL Rear Axle lower Control Arm Brackets will need to be in the same location as the OEM brackets.

Step 3:

Using the proper cutting tool remove the OEM Rear Axle Lower Control Arm Brackets by cutting in the locations shown below.



Standard Lower Control Arm Bracket Assembly instructions:

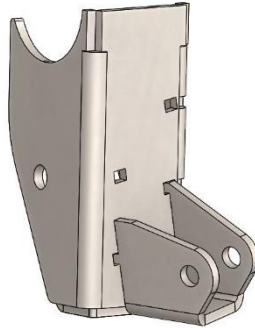
Step 1:

Place the Skid On the bottom of the control arm bracket and weld in place.



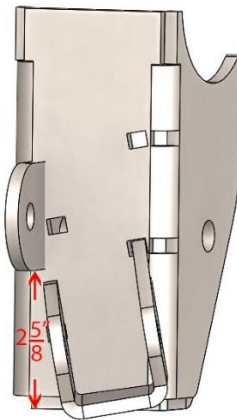
Step 2:

Place the shock bracket on the control arm assembly in the bottom 2 holes and weld into place.



Step 3:

Place the sway bar tab 2 5/8" from the bottom of the control arm assembly and weld into place.



High Clearance Lower Control Arm Bracket Assembly Instructions.

Step 1:

The lower control arm bracket will need to be trimmed for this option. Measure up 2" from the bottom of the bracket and trim all the way around.



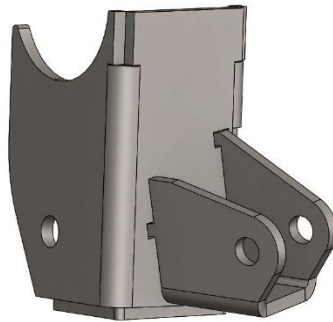
Step 2:

Place the skid plate on the bottom of the bracket, line up the edges and weld into place.



Step 3:

Install the shock bracket in the upper 2 holes on the lower control arm bracket, and weld into place.

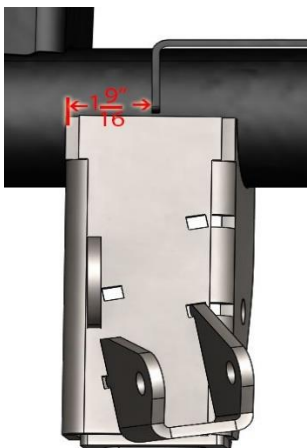


Step 4:

The sway bar tab should be welded 1" from the bottom of the lower control arm skid.

Step 4:

Place the new Barnes4wd lower control arm bracket assembly on the axle in the same location as the old lower control arm bracket. The bracket should be $1 \frac{9}{16}$ " from the bump stop pad and 6° off the track bar bracket.



Step 5:

Tack the bracket into place and test fit the lower control arm, shock and sway bar. Cycle the suspension to check for clearance issues.

Step 6:

Remove the lower control arm, shock and sway bar and fully weld the bracket to the axle.

Step 7:

Repeat Steps 1 through 6 on the opposite side of the jeep.

Congratulations! You have Completed Installation of your Barnes 4wd Jeep JL Rear Axle Lower Control Arm Brackets.

Professional Services Disclaimer:

The content of all pages of this website (collectively, the "Website"), such as text, graphics, images, information and other material (collectively, "Content") is for informational purposes only. Any information furnished on this Website is not intended nor implied to be automotive advice and is not intended to replace personal consultation with a qualified automotive service technician, mechanic, or similar automotive professional.

Barnes 4WD has not examined the Content for accuracy, timeliness, completeness, appropriateness, or helpfulness. Barnes 4WD does not endorse any specific tests, products, procedures, opinions, or other information that may be mentioned on this Website. Your reliance upon information and Content obtained by you at or through this Website is solely at your own risk. IN NO EVENT SHALL BARNES 4WD BE LIABLE OR OTHERWISE RESPONSIBLE FOR ANY DAMAGE OR INJURY (INCLUDING DEATH) TO YOU, OTHER PERSONS, OR PROPERTY ARISING FROM ANY USE OF ANY PRODUCT, INFORMATION, IDEA, OR INSTRUCTION CONTAINED IN THE CONTENT.

BARNES 4WD DOES NOT MAKE ANY REPRESENTATION OR WARRANTY, EXPRESS OR IMPLIED, AT LAW OR IN EQUITY, WITH RESPECT TO ANY PRODUCT FEATURED ON THE WEBSITE, INCLUDING WITHOUT LIMITATION WITH RESPECT TO MERCHANTABILITY, FITNESS FOR ANY PARTICULAR PURPOSE, VALUE, VALIDITY, OR ENFORCEABILITY, AND ANY AND ALL SUCH OTHER REPRESENTATIONS OR WARRANTIES ARE HEREBY EXPRESSLY DISCLAIMED.