



Jeep JL Rear Axle Coil Spring Brackets Installation Instructions

Thank you for purchasing our Jeep JL Rear Axle Coil Spring Brackets!

Installation Notes:

- These brackets are designed to replace the OEM JL Rear Axle Coil Spring Brackets.
- This bracket fits 2018-Current Jeep Wrangler JL
- Installation of this product requires a trained welder.
- Cutting off existing bracketry is required for installation.
- Refer to your vehicle's factory service manual for removal of any factory components.

Tools required:

- Welding machine with the capability of welding at least ¼" steel.
- Proper cutting tool (Grinder with cut off wheel, plasma cutter, cutting torch, etc.)
- Tape Measure
- Angle Finder

Bill of Materials			
QTY	Part Number	Etch Number	Description
2	B4W188791	791 B	JL Rear Axle Coil Spring Bracket
2	B4W188811	811 B	JL Rear Coil Buckets Gusset
4	B4W188714	714 B	JL Rear 14 Bolt Swap Coil Spring Locator
2	B4W188715	715	JL Rear 14 Bolt Swap Coil Spring Cap
2	B4W250352	352	TJ 8.8 Kit Coil Spring Retainer V2.0
2	37CFH8Y	NA	3/8-16 Nut
2	37C100HCS8Y	NA	3/8-16 X 1" Hex Bolt

Step 1:

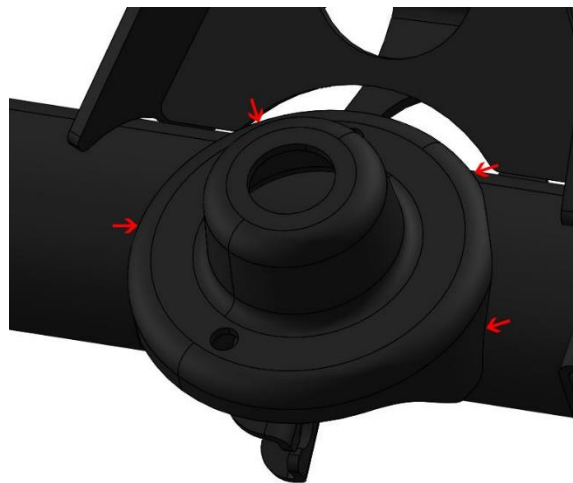
Park the Jeep on a level surface and remove the rear coil springs.

Step 2:

Measure the location of the OEM brackets on the axle. Make a note of these measurements the Barnes 4WD Jeep JL Rear Coil Spring Brackets will need to be in the same location as the OEM brackets.

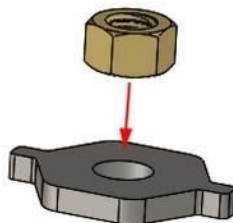
Step 3:

Using the proper cutting tool remove the OEM Rear Axle Coil Spring Brackets by cutting in the locations shown below.



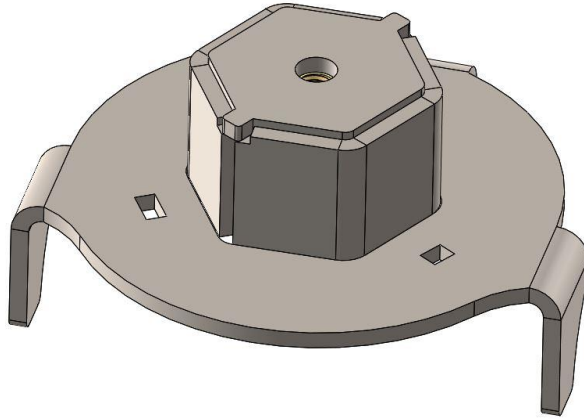
Step 4:

Assembly the coil spring cap and 3/8 nut in the center of the hole and weld into place.



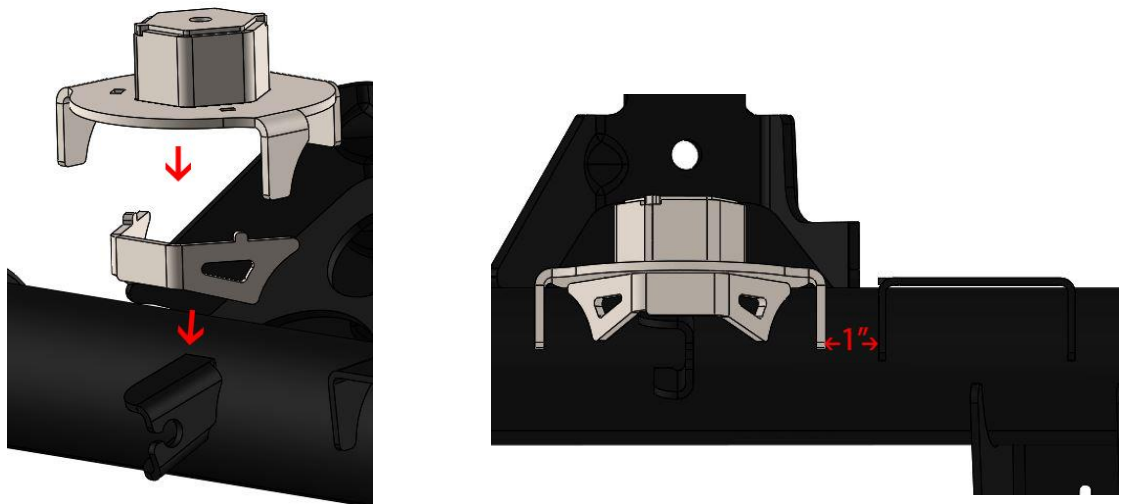
Step 5:

Assemble the coil spring bracket, the 2 coil spring locators and the cap. The coil spring locators should be flush with the top of the coil spring brackets. Weld the brackets together.



Step 6:

Place the coil spring bracket and gusset on the axle. The bracket should be sitting on the parking brake bracket and 1" from the bump stop pad.



Step 7:

Tack the Bracket into place and reinstall the rear coil spring. Cycle the suspension to test for clearance issues.

Step 8:

Remove the rear coil spring and fully weld the bracket into place.

Step 9:

Install the coil spring, retainer and supplied bolt.

Step 10:

Repeat Steps 1 through 9 on the opposite side of the jeep.

Congratulations! You have Completed Installation of your Barnes 4wd Jeep JL Rear Axle Coil Spring Brackets.

Professional Services Disclaimer:

The content of all pages of this website (collectively, the "Website"), such as text, graphics, images, information and other material (collectively, "Content") is for informational purposes only. Any information furnished on this Website is not intended nor implied to be automotive advice and is not intended to replace personal consultation with a qualified automotive service technician, mechanic, or similar automotive professional.

Barnes 4WD has not examined the Content for accuracy, timeliness, completeness, appropriateness, or helpfulness. Barnes 4WD does not endorse any specific tests, products, procedures, opinions, or other information that may be mentioned on this Website. Your reliance upon information and Content obtained by you at or through this Website is solely at your own risk. IN NO EVENT SHALL BARNES 4WD BE LIABLE OR OTHERWISE RESPONSIBLE FOR ANY DAMAGE OR INJURY (INCLUDING DEATH) TO YOU, OTHER PERSONS, OR PROPERTY ARISING FROM ANY USE OF ANY PRODUCT, INFORMATION, IDEA, OR INSTRUCTION CONTAINED IN THE CONTENT.

BARNES 4WD DOES NOT MAKE ANY REPRESENTATION OR WARRANTY, EXPRESS OR IMPLIED, AT LAW OR IN EQUITY, WITH RESPECT TO ANY PRODUCT FEATURED ON THE WEBSITE, INCLUDING WITHOUT LIMITATION WITH RESPECT TO MERCHANTABILITY, FITNESS FOR ANY PARTICULAR PURPOSE, VALUE, VALIDITY, OR ENFORCEABILITY, AND ANY AND ALL SUCH OTHER REPRESENTATIONS OR WARRANTIES ARE HEREBY EXPRESSLY DISCLAIMED.

