



## Jeep JL Front Frame Lower Control Arm Brackets Installation Instructions

Thank you for purchasing our Jeep JL Front Frame Lower Control Arm Brackets!

### Installation Notes:

- This bracket is designed to replace the OEM JL Lower Control Arm Brackets.
- This bracket fits 2018-Current Jeep Wrangler JL
- Installation of this product requires a trained welder.
- Cutting off existing bracketry is required for installation.
- Refer to your vehicle's factory service manual for removal of any factory components.

### Tools required:

- Welding machine with the capability of welding at least ¼" steel.
- Proper cutting tool (Grinder with cut off wheel, plasma cutter, cutting torch, etc.)
- Tape Measure

Bill of Materials			
QTY	Part Number	Etch Number	Description
1	B4W188781	781 B	JL Front Frame LCA Bracket Inner Driver
1	B4W188782	782 B	JL Front Frame LCA Bracket Outer Driver
1	B4W188783	783 B	JL Front Frame LCA Bracket Inner Passenger
1	B4W188784	784 B	JL Front Frame LCA Bracket Outer Passenger

### Step 1:

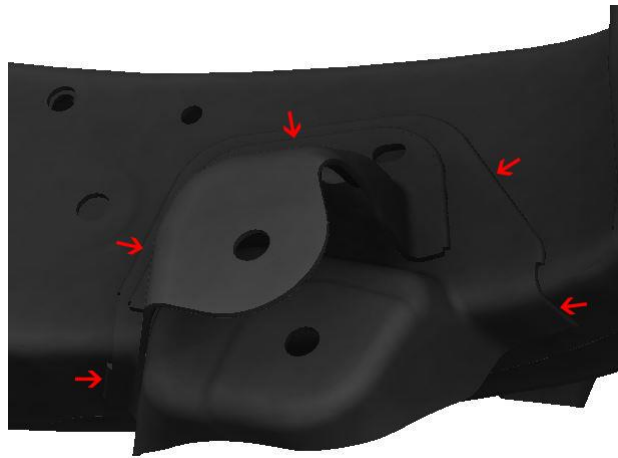
Park the Jeep on a level surface and remove the front lower control arms.

### Step 2:

Measure the location of the OEM brackets on the frame. Make a note of these measurements the Barnes 4WD Jeep JL front frame lower control arm bracket will need to be in the same location as the OEM bracket.

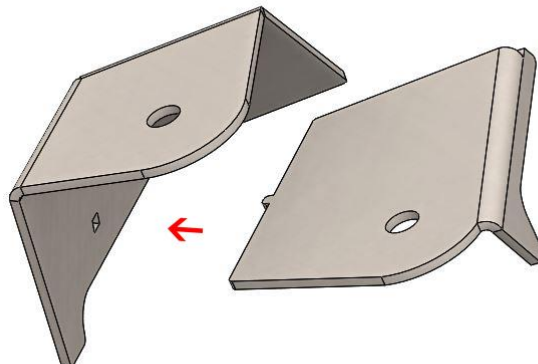
### Step 3:

Using the proper cutting tool remove the OEM Front Frame Lower Control Arm Bracket by cutting in the locations shown below.



### Step 4:

Assemble the two halves of the lower control arm bracket as shown below.



## Step 5:

Place the new Barnes4wd lower control arm brackets on the frame in the same location as the old lower control arm bracket. The bracket should be 3 1/4" from the upper control arm bracket.



## Step 6:

Test fit the lower control arm into the new bracket. Cycle the suspension to check for clearance issues.

## Step 7:

Remove the lower control arm and fully weld the brackets together and to the frame.

## Step 8:

Repeat steps 1 through 7 on the opposite side of the vehicle.

**Congratulations! You have Completed Installation of your Barnes 4wd Jeep JL Front Frame Lower Control Arm Bracket.**

### Professional Services Disclaimer:

The content of all pages of this website (collectively, the "Website"), such as text, graphics, images, information and other material (collectively, "Content") is for informational purposes only. Any information furnished on this Website is not intended nor implied to be automotive advice and is not intended to replace personal consultation with a qualified automotive service technician, mechanic, or similar automotive professional.

Barnes 4WD has not examined the Content for accuracy, timeliness, completeness, appropriateness, or helpfulness. Barnes 4WD does not endorse any specific tests, products, procedures, opinions, or other information that may be mentioned on this Website. Your reliance upon information and Content obtained by you at or through this Website is solely at your own risk. IN NO EVENT SHALL BARNES 4WD BE LIABLE OR OTHERWISE RESPONSIBLE FOR ANY DAMAGE OR INJURY (INCLUDING DEATH) TO YOU, OTHER PERSONS, OR PROPERTY ARISING FROM ANY USE OF ANY PRODUCT, INFORMATION, IDEA, OR INSTRUCTION CONTAINED IN THE CONTENT.

BARNES 4WD DOES NOT MAKE ANY REPRESENTATION OR WARRANTY, EXPRESS OR IMPLIED, AT LAW OR IN EQUITY, WITH RESPECT TO ANY PRODUCT FEATURED ON THE WEBSITE, INCLUDING WITHOUT LIMITATION WITH RESPECT TO MERCHANTABILITY, FITNESS FOR ANY PARTICULAR PURPOSE, VALUE, VALIDITY, OR ENFORCEABILITY, AND ANY AND ALL SUCH OTHER REPRESENTATIONS OR WARRANTIES ARE HEREBY EXPRESSLY DISCLAIMED.