

Jeep JL and JT Dana 44 M210 Front Axle Truss

Thank you for purchasing Barnes 4WD
JEEP JL and JT Dana 44 M210 Front Axle Truss

Installation Notes:

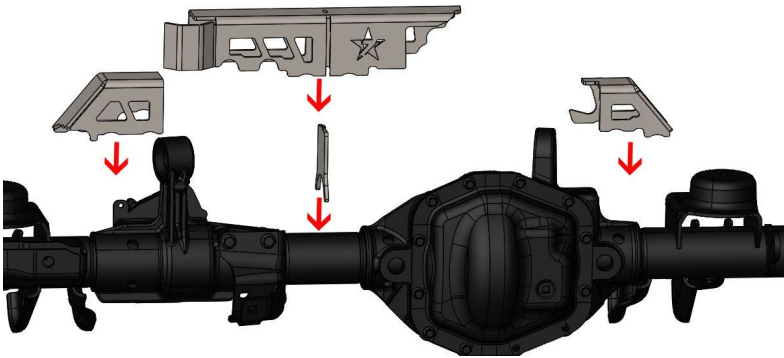
- This truss is designed to fit the JL Rubicon Dana 44 M210 axle
- This truss fits 2018-Current Jeep JL Rubicon Models Only and 2020- Current Jeep JT Gladiator
- Installation of this product requires a trained welder
- Instructions are based upon axle being removed from the Jeep
- Refer to your vehicles factory service manual for removal of any factory components

Tools Required:

- Welding machine with the capability of welding at least ¼" steel.

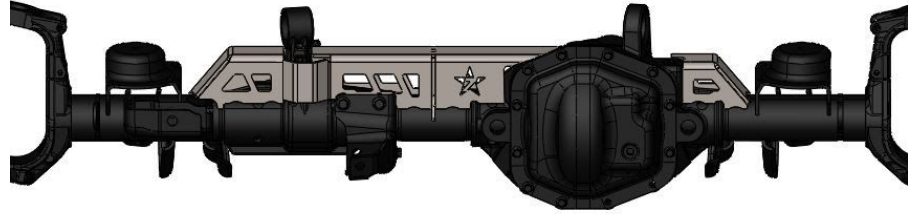
Step 1:

Assemble the truss on the axle as shown in the picture below starting on the passenger side of the axle. The truss is cut to fit around the axle and locate itself



Step 2:

Once the truss is assembled it should look like



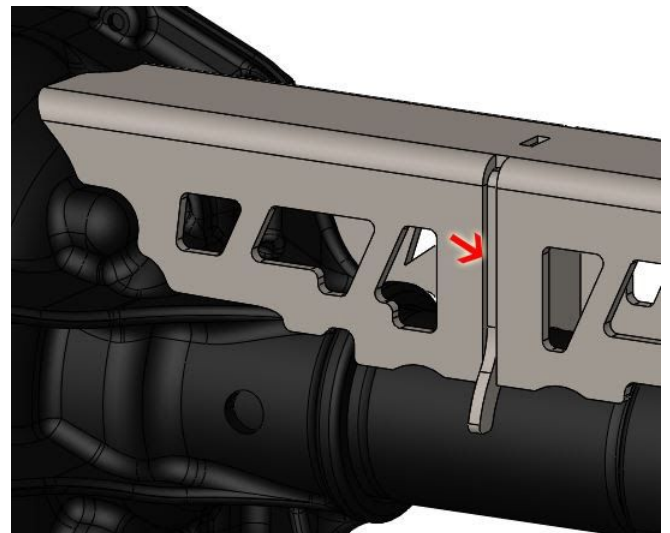
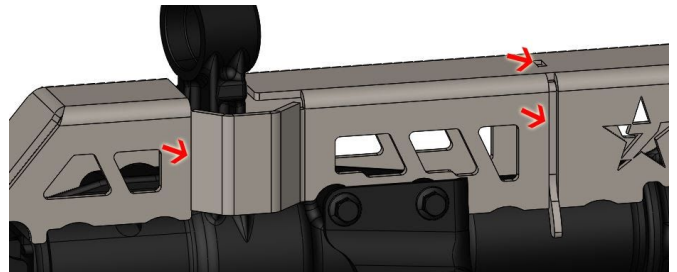
the picture below.

Step 3:

Tack weld the truss to the axle. Making sure the truss is tight against the axle everywhere it touches.

Step 4:

Weld the center section of the truss to the truss upright and the passenger section of the truss in the locations shown in the pictures below.



Step 5:

Finish welding the truss, it is not necessary or recommended to weld the truss to the axle tube at every point of contact. We recommend making small 1"-2" long welds that are staggered with a 1"-2" gap between them. The truss is designed to have cut outs for proper draining and these should not be filled with weld. The axle tubes and all bracketry are steel and can be welded using common techniques and electrodes. When welding to the cast iron center section proper procedures need to be followed. If you are not familiar with the required procedures we recommend having a shop complete the welding.

Step 6:

Install the axle back into the jeep, cycle the suspension, and check clearances to all components of the Jeep.

Congratulations you have completed the installation of your axle truss!

Professional Services Disclaimer: The content of all pages of this website (collectively, the "Website"), such as text, graphics, images, information and other material (collectively, "Content") is for informational purposes only. Any information furnished on this Website is not intended nor implied to be automotive advice and is not intended to replace personal consultation with a qualified automotive service technician, mechanic, or similar automotive professional. Barnes 4WD has not examined the Content for accuracy, timeliness, completeness, appropriateness, or helpfulness. Barnes 4WD does not endorse any specific tests, products, procedures, opinions, or other information that may be mentioned on this Website. Your reliance upon information and Content obtained by you at or through this Website is solely at your own risk. IN NO EVENT SHALL BARNES 4WD BE LIABLE OR OTHERWISE RESPONSIBLE FOR ANY DAMAGE OR INJURY (INCLUDING DEATH) TO YOU, OTHER PERSONS, OR PROPERTY ARISING FROM ANY USE OF ANY PRODUCT, INFORMATION, IDEA, OR INSTRUCTION CONTAINED IN THE CONTENT. BARNES 4WD DOES NOT MAKE ANY REPRESENTATION OR WARRANTY, EXPRESS OR IMPLIED, AT LAW OR IN EQUITY, WITH RESPECT TO ANY PRODUCT FEATURED ON THE WEBSITE, INCLUDING WITHOUT LIMITATION WITH RESPECT TO MERCHANTABILITY, FITNESS FOR ANY PARTICULAR PURPOSE, VALUE, VALIDITY, OR ENFORCEABILITY, AND ANY AND ALL SUCH OTHER REPRESENTATIONS OR WARRANTIES ARE HEREBY EXPRESSLY DISCLAIMED.