

Jeep JK Lifted Rear Track Bar Bracket Installation Instructions

Thank you for purchasing our Jeep JK Rear
Lifted Track Bar Bracket!

Installation notes:

- This bracket is designed to be installed on a 2007-2018 Jeep Wrangler JK or 2007-2018 Jeep Wrangler Unlimited JKU with 2.5" of lift or more
- This bracket will not accommodate the factory axle track bar mounting location
- Trimming of the factory bracket is required
- Welding is required
- An adjustable track bar is recommended

Tools required:

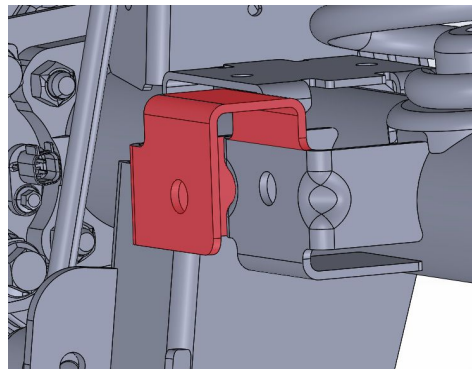
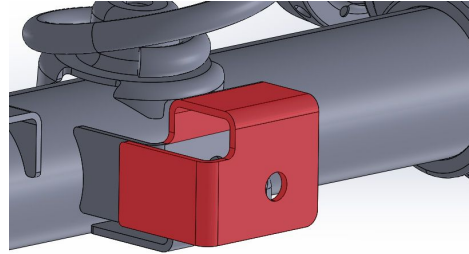
- Welder with the capability to weld at least 1/4" steel
- Grinder, reciprocating saw, torch, plasma cutter, or other appropriate cutting tool
- Various hand tools for removal of vehicle components

Step 1:

Remove the rear track bar from the axle bracket and the rear shock on the drivers side of the vehicle.

Step 2:

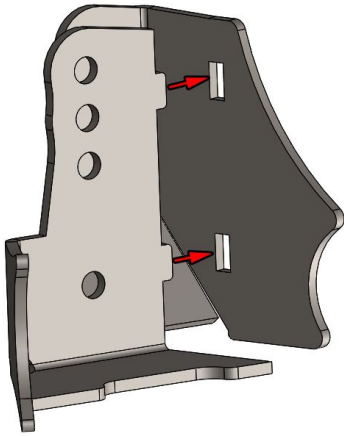
The factory axle track bar bracket needs to be trimmed to facilitate installation of the new bracket. Remove the areas highlighted in the image below.



Step 3:

Assemble the two halves of the new bracket. Place the bracket assembly on the rear axle and align the hole in the bracket with the hole in the factory track bar bracket.

Mark the locations where the bracket contacts the axle, remove the bracket assembly, and remove the paint from the axle in the marked locations in preparation for welding. Place the bracket assembly back on the axle, align the holes and tack weld in place.

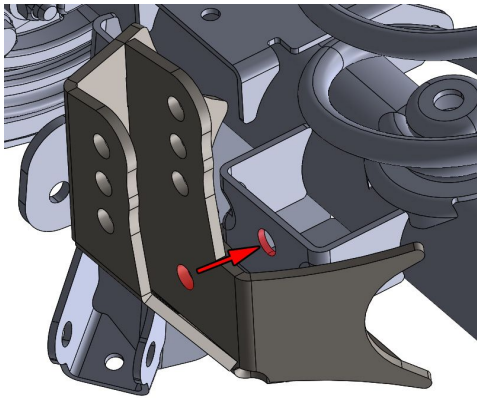


Step 5:
Cycle the suspension and verify clearance to all other components of the vehicle.

Step 6:
Remove the track bar. Weld the new track bar bracket to the axle, and to the remainder of the factory bracket at all contact points.

Step 7:
Reassemble any vehicle components removed in previous steps.

Congratulations you have completed the installation of your new track bar bracket!



Professional Services Disclaimer:

The content of all pages of this website (collectively, the "Website"), such as text, graphics, images, information and other material (collectively, "Content") is for informational purposes only. Any information furnished on this Website is not intended nor implied to be automotive advice and is not intended to replace personal consultation with a qualified automotive service technician, mechanic, or similar automotive professional.

Barnes 4WD has not examined the Content for accuracy, timeliness, completeness, appropriateness, or helpfulness. Barnes 4WD does not endorse any specific tests, products, procedures, opinions, or other information that may be mentioned on this Website. Your reliance upon information and Content obtained by you at or through this Website is solely at your own risk. IN NO EVENT SHALL BARNES 4WD BE LIABLE OR OTHERWISE RESPONSIBLE FOR ANY DAMAGE OR INJURY (INCLUDING DEATH) TO YOU, OTHER PERSONS, OR PROPERTY ARISING FROM ANY USE OF ANY PRODUCT, INFORMATION, IDEA, OR INSTRUCTION CONTAINED IN THE CONTENT.

BARNES 4WD DOES NOT MAKE ANY REPRESENTATION OR WARRANTY, EXPRESS OR IMPLIED, AT LAW OR IN EQUITY, WITH RESPECT TO ANY PRODUCT FEATURED ON THE WEBSITE, INCLUDING WITHOUT LIMITATION WITH RESPECT TO MERCHANTABILITY, FITNESS FOR ANY PARTICULAR PURPOSE, VALUE, VALIDITY, OR ENFORCEABILITY, AND ANY AND ALL SUCH OTHER REPRESENTATIONS OR WARRANTIES ARE HEREBY EXPRESSLY DISCLAIMED.

Step 4:
Test fit the track bar in the appropriate mounting hole for your lift height. Use the diagram below to locate the correct hole for you lift height.

