



Jeep JK Front Control Arm Geometry Correction Brackets Installation Instructions

Thank you for purchasing our Jeep JK Front Control Arm Geometry Correction Brackets!

Installation Notes:

- This kit is designed to fit all Jeep JK Wrangler JK 2 Door and JKU Unlimited 4 door models from 2007-2018.
- The brackets in this kit will need to be painted or powder coated during installation. We highly recommend test fitting all components before painting or powder coating.
- The vehicle will need to be taken to a qualified alignment shop and have an alignment performed after installation.

Tools required:

- Ratchet
- The following sockets 13/16, 7/8, 3/4, 18mm, 21mm

Contents of each kit

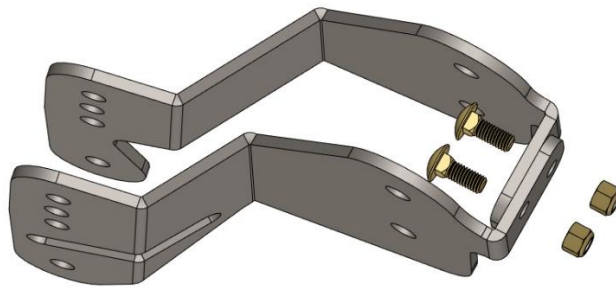
Bill Of Materials For (BOM Part# and Description)			
QTY	Part Number	Etch Number	Description
1	B4W250539	539 B	JK D Inner Drop Bracket
1	B4W250538	538 B	JK D Outer Drop Bracket
1	B4W250541	541 B	JK P Inner Drop Bracket
1	B4W250540	540 B	JK P Outer Drop Bracket
2	DOM0042	NA	JK Drop Bracket Upper Sleeve
2	DOM0043	NA	JK Drop Bracket Lower Sleeve
2	50C350HCS8Y	NA	1/2 -13 x 3.5
2	56C450HCS8Y	NA	9/16-12x4.5 Grade 8 Bolt
4	50NWSAFY	NA	1/2" SAE Flat Washer Yellow Zinc
2	50CNNEOY/GC	NA	1/2"-13 Nylon Lock Nut
4	56NWSAFY	NA	9/16" SAE Washer Gold Zinc
2	56CNNEOY/GC	NA	9/16-12 Nylock
4	37C100BCG8Y	NA	3/8"-16 x 1" Carriage Head Bolt Grade 8 Yellow Zinc
4	37CNNEOY/GC	NA	3/8-16 Nylock Yellow

Step 1:

Ensure that the vehicle is in a level spot and is unable to roll. Remove the frame side bolts for the upper and lower control arms on the right side of the vehicle.

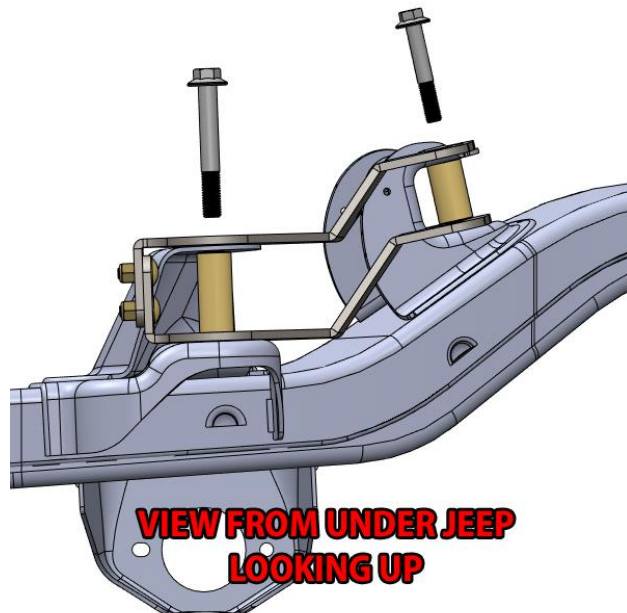
Step 2:

Assemble B4W250539 and B4W250538 as shown in the image below with the provided carriage head hardware and nylock nuts. The hardware only needs to be hand tight at this time.



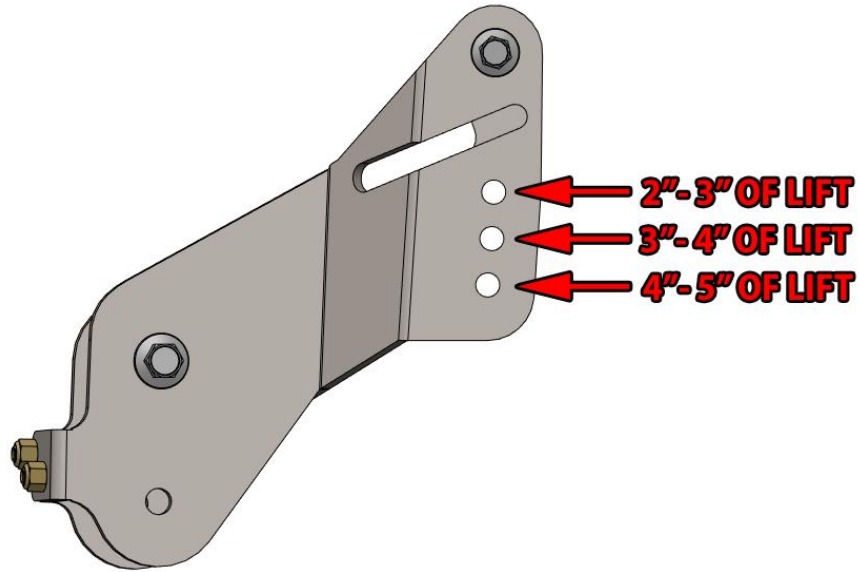
Step 3:

Place the bracket assembly on the frame of the vehicle as shown, insert the DOM sleeves between the existing frame brackets and the bracket assembly from the last step. Install the factory hardware back into their original locations hand tight at this time.



Step 4:

Place the lower control arm into the new lower control arm location and install with the provided 9/16" bolt, washers, and nylock nuts hand tight. Use the image below to determine the correct mounting location for your upper control arm depending on the amount of lift installed on your vehicle. Once the correct location is determined install the upper control arm with the provided 1/2" bolt, washers, and nylock nut. Tighten all hardware.



Step 5:

Repeat the above steps for the opposite side of the vehicle.

Congratulations you have completed the installation of this product!

Professional Services Disclaimer:

The content of all pages of this website (collectively, the "Website"), such as text, graphics, images, information and other material (collectively, "Content") is for informational purposes only. Any information furnished on this Website is not intended nor implied to be automotive advice and is not intended to replace personal consultation with a qualified automotive service technician, mechanic, or similar automotive professional.

Barnes 4WD has not examined the Content for accuracy, timeliness, completeness, appropriateness, or helpfulness. Barnes 4WD does not endorse any specific tests, products, procedures, opinions, or other information that may be mentioned on this Website. Your reliance upon information and Content obtained by you at or through this Website is solely at your own risk. IN NO EVENT SHALL BARNES 4WD BE LIABLE OR OTHERWISE RESPONSIBLE FOR ANY DAMAGE OR INJURY (INCLUDING DEATH) TO YOU, OTHER PERSONS, OR PROPERTY ARISING FROM ANY USE OF ANY PRODUCT, INFORMATION, IDEA, OR INSTRUCTION CONTAINED IN THE CONTENT.

BARNES 4WD DOES NOT MAKE ANY REPRESENTATION OR WARRANTY, EXPRESS OR IMPLIED, AT LAW OR IN EQUITY, WITH RESPECT TO ANY PRODUCT FEATURED ON THE WEBSITE, INCLUDING WITHOUT LIMITATION WITH RESPECT TO MERCHANTABILITY, FITNESS FOR ANY PARTICULAR PURPOSE, VALUE, VALIDITY, OR ENFORCEABILITY, AND ANY AND ALL SUCH OTHER REPRESENTATIONS OR WARRANTIES ARE HEREBY EXPRESSLY DISCLAIMED.