

## Jeep JK Front Axle Lifted Track Bar Bracket Installation Instructions

Thank you for purchasing our front axle track bar bracket!

### Installation notes:

- Welding and fabrication is required to install this product
- This product is designed to fit 2007-2018 Jeep Wrangler JK and JKU Unlimited factory axles (Dana 44 and Dana 30)
- Removal of the OEM track bar bracket is required
- This product is designed to be used with a steering drag link that has been moved to the top of the steering knuckle

### Tools required:

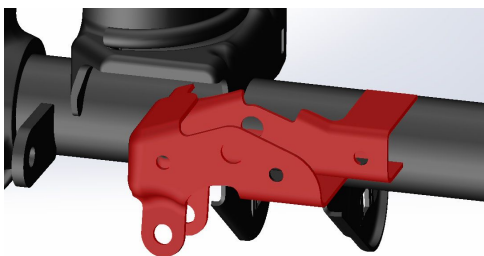
- Grinder, Plasma cutter, torch or other appropriate metal cutting tool
- Welder with the capability to weld at least 1/4" steel
- Various hand tools for the removal of OEM components

### Step 1:

Unbolt the track bar from the front axle. We also recommend removing the tie rod and draglink for easier access to the area of the Jeep you will be working on.

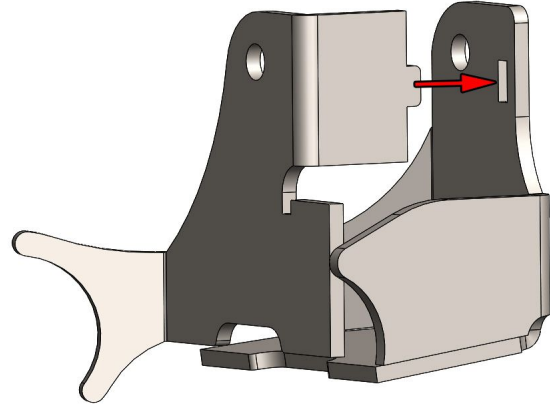
### Step 2:

Using an appropriate cutting tool remove the OEM track bar bracket. Remove the entire bracket and grind smooth the welds left on the axle.



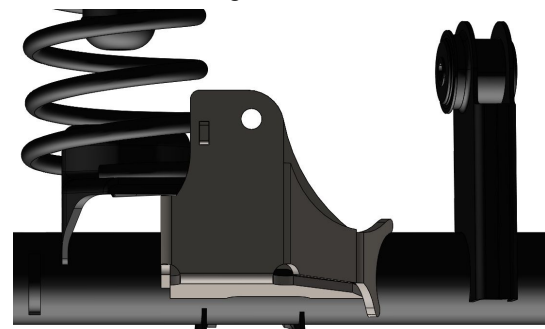
### Step 3:

Assemble the two halves of the new bracket. One half of the bracket will have a tab that will insert into a slot on the other bracket to locate the assembly. Tack weld the two halves of the assembly together.

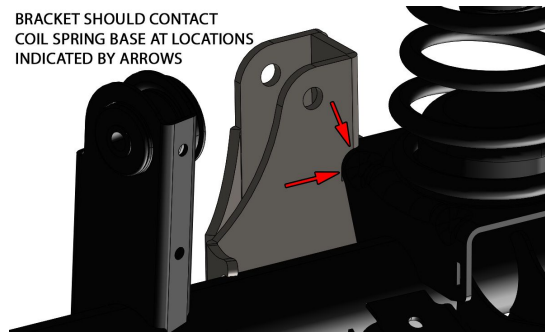


### Step 4:

Place the bracket assembly on the axle tube, slide and rotate the bracket until the cut out area contacts the top and side of the coil spring pad. Mark all areas where the bracket contacts the axle and coil spring pad. Remove the bracket assembly and remove the paint from the marked locations with a grinder in preparation for welding. Fully weld the two halves of the bracket together at this time.



BRACKET SHOULD CONTACT  
COIL SPRING BASE AT LOCATIONS  
INDICATED BY ARROWS

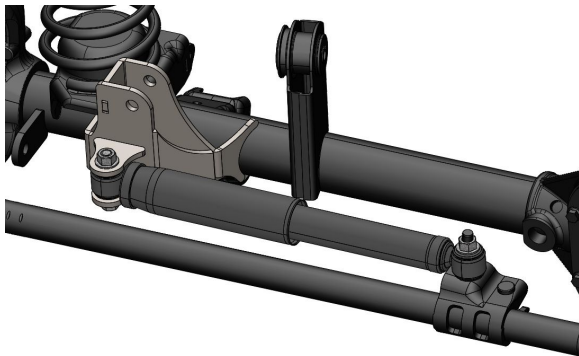


#### Step 5:

Place the bracket assembly back onto the axle in the location outlined in step 4. Tack weld the bracket to the axle. Install the track bar and cycle the suspension on the vehicle to verify clearance to all other components.

#### Step 6:

If removed install the tie rod and draglink back onto the vehicle. If using the factory steering stabilizer and mount, the stabilizer bracket on the tie rod will need to be loosened and rotated up 90° so the mounting stud will point straight up. Install the stabilizer on the stud on the tie rod bracket. Place the two provided tabs on the opposite end of the stabilizer and install the factory bolt and nut. Place the two tabs on the end of the stabilizer on the face of the track bar bracket and adjust their location until the stabilizer is parallel to the tie rod while the front wheels are pointed straight forward. Tack weld the tabs in place and fully cycle the suspension and steering to check for clearance.



#### Step 7:

Remove any components necessary to gain access to complete welding at this time. Weld the bracket to the axle and weld the stabilizer mounting tabs to the bracket. Paint all bare metal surfaces to prevent rust. Assembly any parts removed in the previous steps.

Congratulations you have completed the installation of you track bar bracket!