

## Jeep JK 3 Link Rear Upper Control Arm DIY Kit Installation Instructions

Thank you for purchasing our Jeep JK 3 Link  
Rear Upper Control Arm DIY Kit!

### Installation notes:

- This kit requires general fabrication skills including welding
- We do not recommend welding the tube inserts into the tubing with the suspension joint installed. Damage can occur to the tube insert and the suspension joint!
- Anti-seize compound should be applied to all threaded connections
- Each suspension joint should be lubricated with approximately 2 pumps of lithium-based grease upon installation

### Tools required:

- Welding machine with the capability to weld at least ¼" thick steel
- Internal retaining ring pliers large enough to fit a 2-1/16" internal retaining ring
- Our large Enduro rebuild tool (Part# B4WK12399) or other means of relieving the preload on the weld on suspension joint
- Tape measure
- Anti-seize compound
- Grease gun with lithium-based lubricant

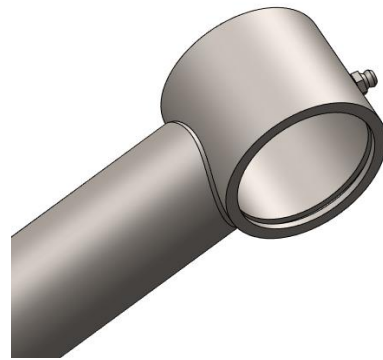
### Step 1:

Disassembly of the weld on suspension joint is required before welding. If using our Enduro rebuild tool, please refer to the instructions provided with the tool. Use care to ensure the components of the joint are arranged so they

can be installed in the same order and orientation that they are removed.

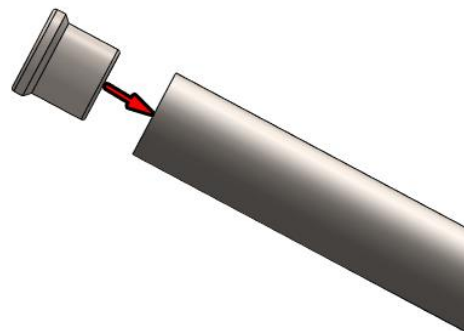
### Step 2:

The body of the weld on suspension joint will need to be welded into the coped end of the included tubing, take care to orient the grease zerk so it is accessible when installed. Place the body in the cope, center and weld all the way around the tubing.



### Step 3:

Place the provided threaded insert in the opposite end of the tubing and weld all the way around.

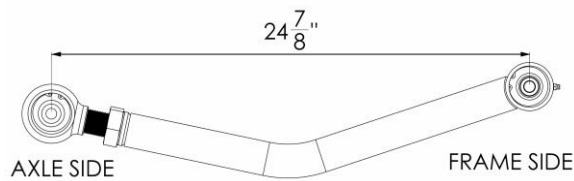


### Step 4:

Apply the rust preventative coating of your choice (paint, powder coat, etc).

### Step 5:

Re-assemble the weld on suspension joint.  
Apply anti-seize compound to the threads of the threaded suspension joint and install in the link assembly with the jam nut. Adjust the threaded joint to so the measurements match the image below and tighten the jam nut. Place approximately 2 pumps of lithium-based grease into each suspension joint.



**Congratulations the link assembly is now ready to be installed!**

#### Professional Services Disclaimer:

The content of all pages of this website (collectively, the "Website"), such as text, graphics, images, information and other material (collectively, "Content") is for informational purposes only. Any information furnished on this Website is not intended nor implied to be automotive advice and is not intended to replace personal consultation with a qualified automotive service technician, mechanic, or similar automotive professional.

Barnes 4WD has not examined the Content for accuracy, timeliness, completeness, appropriateness, or helpfulness. Barnes 4WD does not endorse any specific tests, products, procedures, opinions, or other information that may be mentioned on this Website. Your reliance upon information and Content obtained by you at or through this Website is solely at your own risk. IN NO EVENT SHALL BARNES 4WD BE LIABLE OR OTHERWISE RESPONSIBLE FOR ANY DAMAGE OR INJURY (INCLUDING DEATH) TO YOU, OTHER PERSONS, OR PROPERTY ARISING FROM ANY USE OF ANY PRODUCT, INFORMATION, IDEA, OR INSTRUCTION CONTAINED IN THE CONTENT.

BARNES 4WD DOES NOT MAKE ANY REPRESENTATION OR WARRANTY, EXPRESS OR IMPLIED, AT LAW OR IN EQUITY, WITH RESPECT TO ANY PRODUCT FEATURED ON THE WEBSITE, INCLUDING WITHOUT LIMITATION WITH RESPECT TO MERCHANTABILITY, FITNESS FOR ANY PARTICULAR PURPOSE, VALUE, VALIDITY, OR ENFORCEABILITY, AND ANY AND ALL SUCH OTHER REPRESENTATIONS OR WARRANTIES ARE HEREBY EXPRESSLY DISCLAIMED.