

JEEP TJ, LJ, MJ, XJ, AND ZJ FRONT AXLE COIL SPRING BRACKETS

Installation Instructions

Thank You for purchasing Barnes 4WD JEEP TJ, LJ, MJ, XJ, AND ZJ FRONT AXLE COIL SPRING BRACKETS

Installation Notes:

- Installation of this kit requires a trained welder
- Refer to your factory service manual for information regarding the removal of any factory components
- Kit includes brackets for the passenger and driver side of your jeep and will accommodate the mounting of your coil springs, shocks, track bar, steering stabilizer, and sway bar ends
- The OEM Shock Bar Pin will need to be pressed out. The Bar Pin will be replaced by the DOM Sleeve. Please see installation note 1A on page 4
- A parts list can be found on page 6

Tools Required:

- Welding machine with the capability to weld at least 3/8" thick steel
- Grinder
- Cutting torch, plasma cutter, or other appropriate cutting tool
- Angle finder

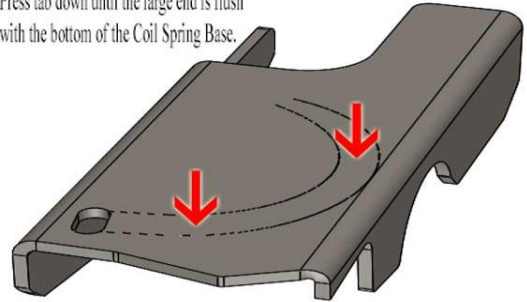
Step 1:

Remove factory brackets. Measure and record the location of the O.E.M brackets that are removed. This kit includes brackets for the passenger and driver side of your jeep and will accommodate the mounting of your coil springs, shocks, track bar, steering stabilizer, and sway bar ends.

Step 2:

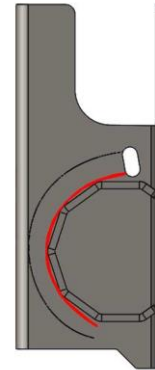
The coil spring seats on both the TJ Front Coil Spring Base Driver and Passenger need to be pressed down and welded. Press the tab down until the large end is flush with the bottom. Weld on the bottom of the base.

Press tab down until the large end is flush with the bottom of the Coil Spring Base.

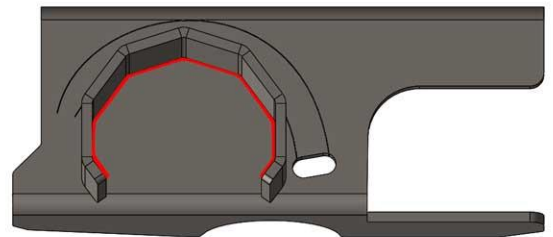


Step 3:

Locate the TJ Front Coil Spring Locator, onto the TJ Front Coil Spring Base Driver. Align the Coil Spring Locator with the edge of the arc on the Front Coil Spring Base Driver.



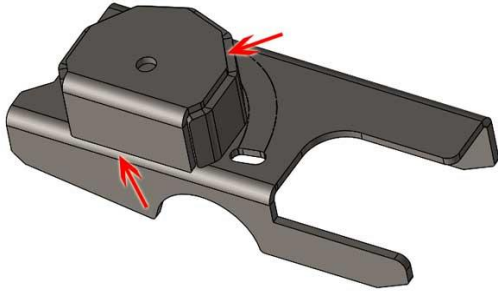
Once located weld around inside of the TJ Front Axle Coil Spring Locator. Weld where indicated in red in picture below.



Repeat this step with remaining TJ Front Axle Coil Spring Locator, and TJ Front Coil Spring Base Passenger.

Step 4:

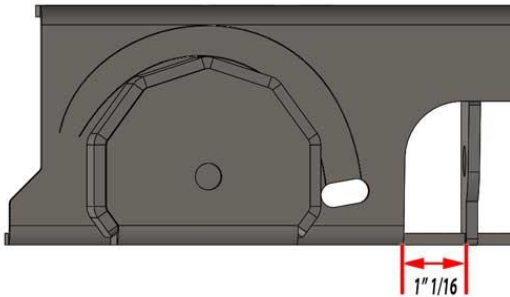
Locate the TJ Front Axle Coil Spring Cap on top of the TJ Front Axle Coil Spring Locator. Weld around the edge of cap and along bottom of flange.



Repeat this step for TJ Front Coil Spring Base Passenger.

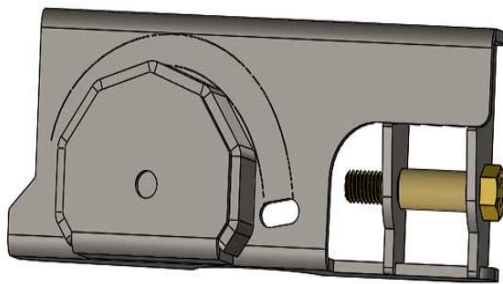
Step 5:

Locate the TJ Front Axle Shock Tab onto the TJ Front Coil Spring Base Driver. Tack weld the tab 1 1/16" from the back surface of the base. As pictured below.



Step 6:

To locate the second tab, use the Dom Sleeve and position it over the bolt hole on the tab that was welded on in step 5. Position the next tab against the Dom sleeve over the bolt hole and tack weld on the tab. Verify tabs location by putting DOM Sleeve between tabs and inserting bolt. Making sure that fitment is tight.



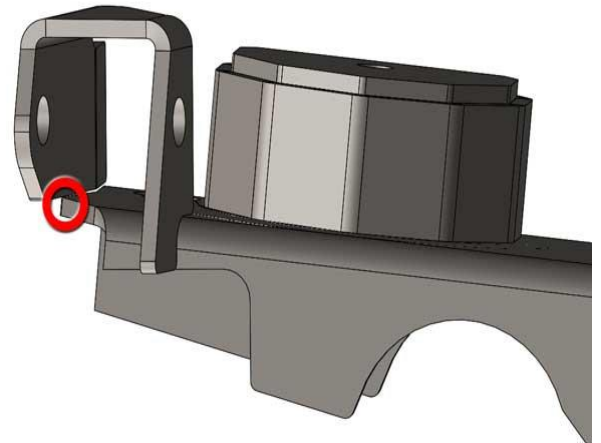
With fitment verified remove bolt and Dom Sleeve and fully weld tabs into place.

Step 7:

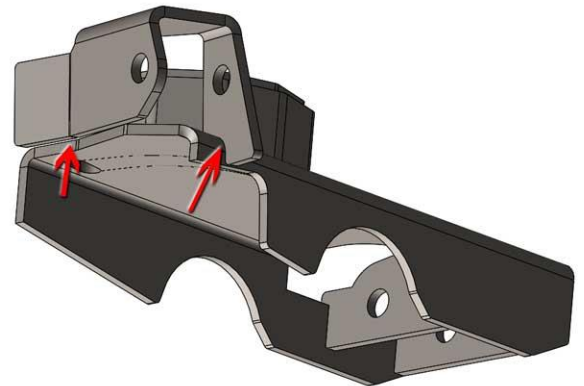
Repeat steps 5-6 for TJ Front Coil Spring Base Passenger.

Step 8:

Locate the TJ Front Axle Steering Stabilizer Bracket onto the TJ Front Coil Spring Base Passenger. The Steering Stabilizer bracket will make contact on the front edge Coil Spring Base Passenger. See picture.



Once the location is verified tack weld the Steering Stabilizer Bracket to the Coil Spring Base Passenger.

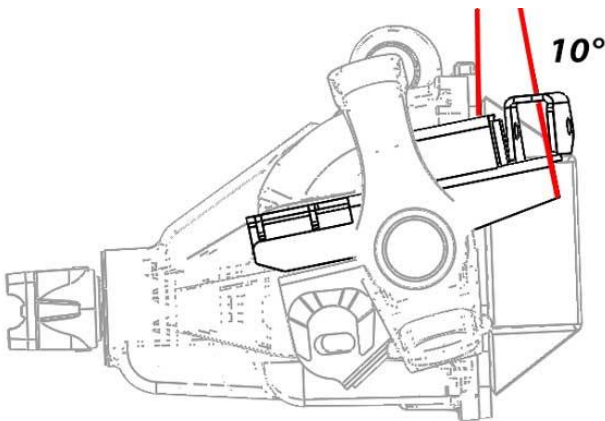


Step 9:

Using the measurements recorded in step one. Locate the TJ Front Coil Spring Base Passenger assembly onto the axle. This will be located in the O.E.M factory location.



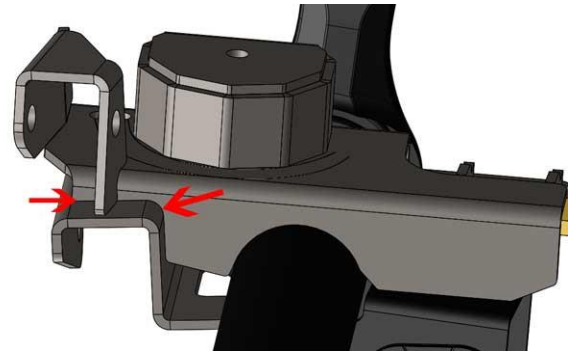
Using an angle finder position the front of the TJ Front Coil Spring Base Passenger bracket 10° back from the differential cover mounting service. Once measurements are satisfied tack weld the bracket into place.



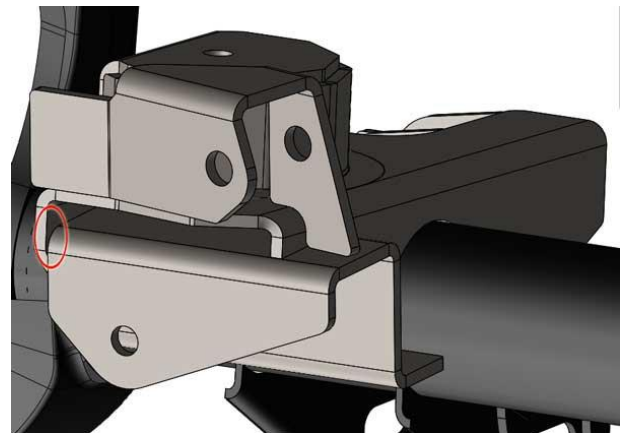
Repeat this step for the driver's side using the TJ Front Coil Spring Base Driver assembly.

Step 10:

Locate the TJ Front Axle Track Bar Bracket to the TJ Front Coil Spring Base Passenger. The Axle Track Bar Bracket will insert in cutout on the Coil Spring Base Passenger.



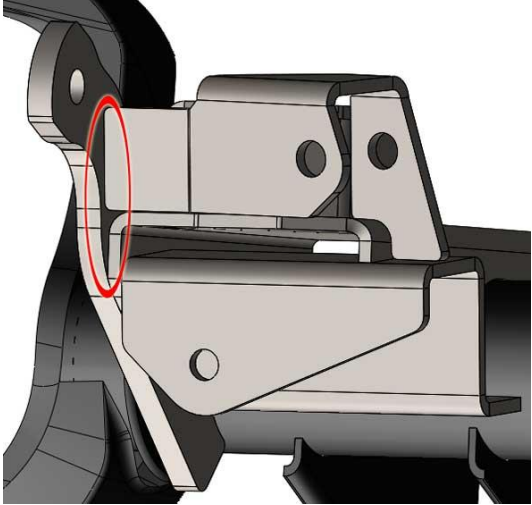
Slide the TJ Front Axle Track Bar Bracket until it makes contact with the side of the TJ Front Coil Spring Base Passenger.



With location satisfied tack weld the TJ Front Axle Track Bar Bracket into place. Verify location by bolting in track bar. Once verified fully weld.

Step 11:

Locate the TJ Front Axle Sway Bar Bracket onto the Axle. It will contact the side of the TJ Front Coil Spring Base Passenger, and the flange of the TJ Front Axle Steering Stabilizer Bracket.



Step 12

:

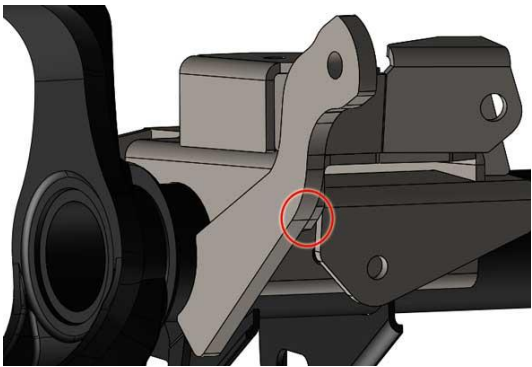
Fully weld the brackets into place. Reinstall your Track Bar, Steering Stabilizer, Coil Springs and Shocks.

(Installation Note: The OEM Shock Bar Pin will need to be pressed out. The Bar Pin will be replaced by the DOM Sleeve used in step 6)

Installation Note 1A:

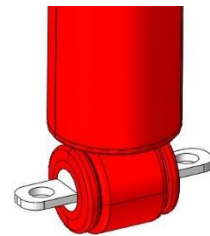
The bar pin on the OEM shocks will need to be pressed out. Unbolt the shocks mount from the OEM location. Then Press out the Bar Pin.

Rotate the TJ Front Axle Sway Bar Bracket on the axle until it is flush with the edge of the TJ Front Coil Spring Base Passenger. (See picture below)

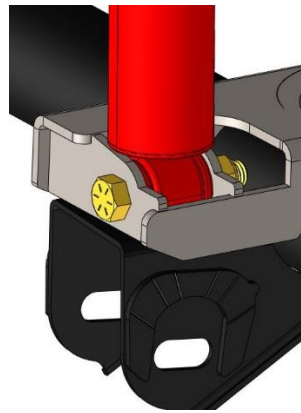


Tack weld the TJ Front Axle Sway Bar Bracket into place. Before fully welding into place bolt in the sway bar, to verify position of the Sway Bar Bracket. Once location is verified fully weld the TJ Front Axle Sway Bar Bracket into place.

Repeat this step for the Drivers side. Please note that on the driver's side there is no steering stabilizer bracket.



Press in the DOM Sleeve. Please see pictures below for final assembly.



Congratulations

You have now completed Installation of

Barnes 4WD

JEEP TJ, LJ, MJ, XJ, AND ZJ FRONT AXLE COIL SPRING BRACKETS

Professional Services Disclaimer:

The content of all pages of this website (collectively, the "Website"), such as text, graphics, images, information and other material (collectively, "Content") is for informational purposes only. Any information furnished on this Website is not intended nor implied to be automotive advice and is not intended to replace personal consultation with a qualified automotive service technician, mechanic, or similar automotive professional.

Barnes 4WD has not examined the Content for accuracy, timeliness, completeness, appropriateness, or helpfulness. Barnes 4WD does not endorse any specific tests, products, procedures, opinions, or other information that may be mentioned on this Website. Your reliance upon information and Content obtained by you at or through this Website is solely at your own risk. IN NO EVENT SHALL BARNES 4WD BE LIABLE OR OTHERWISE RESPONSIBLE FOR ANY DAMAGE OR INJURY (INCLUDING DEATH) TO YOU, OTHER PERSONS, OR PROPERTY ARISING FROM ANY USE OF ANY PRODUCT, INFORMATION, IDEA, OR INSTRUCTION CONTAINED IN THE CONTENT.

BARNES 4WD DOES NOT MAKE ANY REPRESENTATION OR WARRANTY, EXPRESS OR IMPLIED, AT LAW OR IN EQUITY, WITH RESPECT TO ANY PRODUCT FEATURED ON THE WEBSITE, INCLUDING WITHOUT LIMITATION WITH RESPECT TO MERCHANTABILITY, FITNESS FOR ANY PARTICULAR PURPOSE, VALUE, VALIDITY, OR ENFORCEABILITY, AND ANY AND ALL SUCH OTHER REPRESENTATIONS OR WARRANTIES ARE HEREBY EXPRESSLY DISCLAIMED.

Parts Included In KIT

