



JL/JT Front Frame Lower Control Arm Skid Plates Installation Instructions

Thank you for purchasing our JL/JT front frame lower control arm skid plates!

Installation Notes:

- This product is designed to cap over the factory front frame lower control arm mounts on a 2018-Current Jeep JL Wrangler and a 2020-Current Jeep JT Gladiator
- Refer to the factory service manual to remove any factory components.
- Drilling two holes in each factory lower control arm bracket is required for installation.

Tools required:

- Drill
- 3/8" Drill Bit
- 3/8" Ratchet
- 1/2" Ratchet
- 9/16" Socket
- 21mm socket
- 9/16" Wrench
- 24mm Wrench

Contents of box

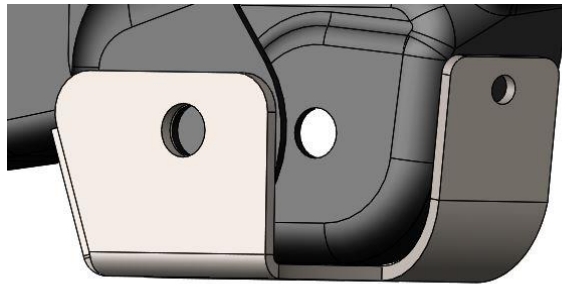
Bill Of Materials for B4WK12741			
QTY	Part Number	Etch Number	Description
1	B4W188611	611 B	JL Front Frame Lower Control Arm Skid Driver
1	B4W188612	612 B	JL Front Frame Lower Control Arm Skid Passenger
4	37CNNE0Y/GC	NA	3/8-16 Nylock Yellow
4	37C100HCS8Y	NA	3/8"-16X1" Hex Head

Step 1:

Park the Jeep on a level surface and remove the frame front lower control arm bolt.

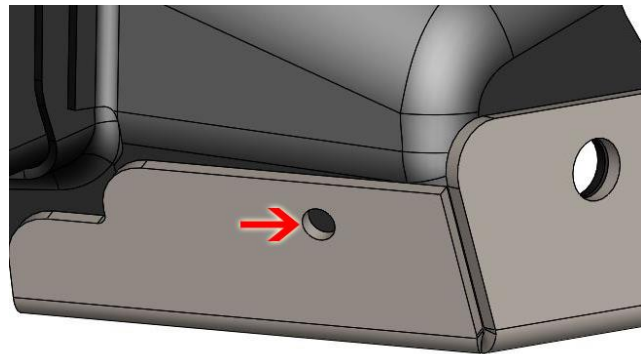
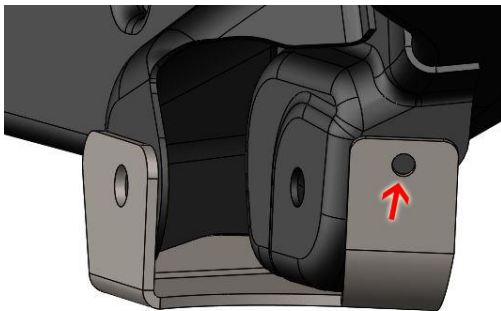
Step 2:

Place the skid plate over the front control arm bracket. If your factory bracket has been damaged, you may need to straighten them before the skid will fit.



Step 3:

Install the control arm bolt to locate the bracket and mark the center of the two 3/8" holes.

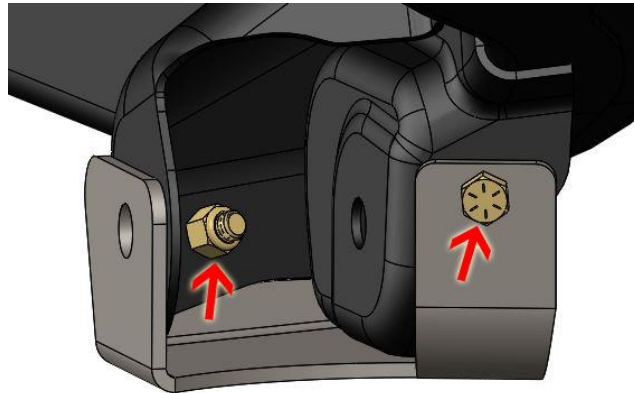


Step 4:

Remove the skid plate and drill two 3/8" holes into the factory bracket.

Step 5:

With the holes drilled reinstall the skid plate over the factory bracket install the 3/8" hardware and tighten.



Step 6:

Reinstall the control arm into the bracket and install the factory hardware and torque to the factory torque specification.

Step 7:

Repeat steps 1 through 6 on the opposite side of the jeep.

Congratulations! You have finished the installation of the Barnes4wd JL/JT Front Frame Lower Control Arm Skid Plates

Professional Services Disclaimer:

The content of all pages of this website (collectively, the "Website"), such as text, graphics, images, information and other material (collectively, "Content") is for informational purposes only. Any information furnished on this Website is not intended nor implied to be automotive advice and is not intended to replace personal consultation with a qualified automotive service technician, mechanic, or similar automotive professional.

Barnes 4WD has not examined the Content for accuracy, timeliness, completeness, appropriateness, or helpfulness. Barnes 4WD does not endorse any specific tests, products, procedures, opinions, or other information that may be mentioned on this Website. Your reliance upon information and Content obtained by you at or through this Website is solely at your own risk. IN NO EVENT SHALL BARNES 4WD BE LIABLE OR OTHERWISE RESPONSIBLE FOR ANY DAMAGE OR INJURY (INCLUDING DEATH) TO YOU, OTHER PERSONS, OR PROPERTY ARISING FROM ANY USE OF ANY PRODUCT, INFORMATION, IDEA, OR INSTRUCTION CONTAINED IN THE CONTENT.

BARNES 4WD DOES NOT MAKE ANY REPRESENTATION OR WARRANTY, EXPRESS OR IMPLIED, AT LAW OR IN EQUITY, WITH RESPECT TO ANY PRODUCT FEATURED ON THE WEBSITE, INCLUDING WITHOUT LIMITATION WITH RESPECT TO MERCHANTABILITY, FITNESS FOR ANY PARTICULAR PURPOSE, VALUE, VALIDITY, OR ENFORCEABILITY, AND ANY AND ALL SUCH OTHER REPRESENTATIONS OR WARRANTIES ARE HEREBY EXPRESSLY DISCLAIMED.