



## Jeep JK Rear Upper Shock Mount Extension Installation Instructions

Thank you for purchasing our Jeep JK Rear Upper Shock Mount Extension!

### Installation Notes:

- Modifications to your exhaust may be necessary to clear the relocated sway bar and shocks
- Trimming or removal of the factory exhaust shield above the muffler maybe necessary to clear the new bracket and shock
- This bracket will move your shock up and back, thus changing the angle of your shock travel and possibly your ride quality
- Moderate amount of cutting and drilling is required to install these brackets
- With the factory lower shock mount, a long travel shock is required to use these mounts to prevent any damage to the mount or to your shocks
- Using our Jeep JK Heavy Duty Rear Lower Control Arm and Rear Shock Relocation Bracket (Part # B4W0040K), the factory shocks could be used
- These brackets have been tested with factory shocks; test fit your setup before any modifications are made to your vehicle to ensure proper fitment

### Tools required:

- Cut-off wheel, plasma cutter, or other adequate cutting devices
- 13/32" drill bit
- 17/32" drill bit
- 3/4" and 9/16" socket and ratchet
- Spray Paint and/or Powder Coater

## Contents of each box

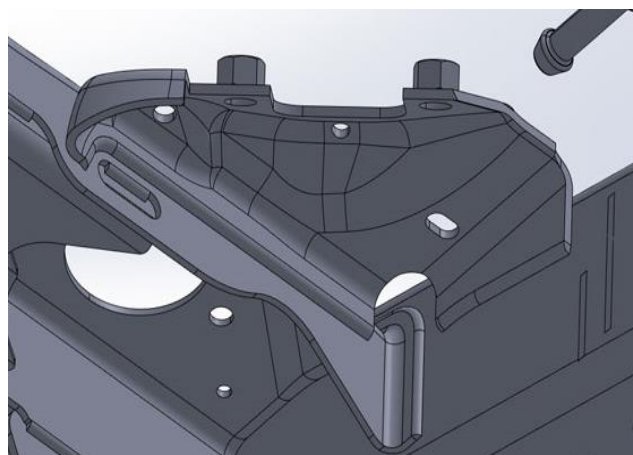
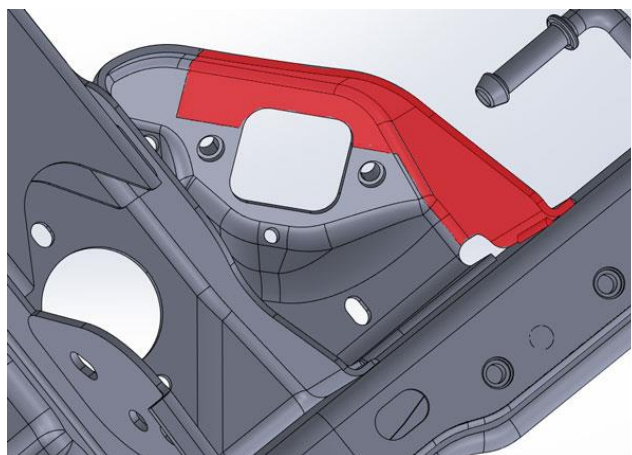
Bill Of Materials For B4WK12682- Jeep JK Rear Upper Shock Mount Extension			
QTY	Part Number	Etch Number	Description
1	B4WK12524	N/A	JK Rear Upper Shock Mount Extension Passenger Side
1	B4WK12525	N/A	JK Rear Upper Shock Mount Extension Driver Side
1	B4W125109P	109 BP	JK Rear Sway Bar Flag Nut Passenger Side
1	B4W125112P	112 BP	JK Rear Sway Bar Flag Nut Driver Side
12	37C100HCS8Y	N/A	3/8"-16 x 1" Hex Bolt
12	37NWSAFY	N/A	3/8" SAE Flat Washer
8	37CNNE0Y/GC	N/A	3/8"-16 Nylock Nut
2	50C125HCS5Z	N/A	1/2"-13 x 1-1/4" Hex Bolt
2	50NWSAFY	N/A	1/2" SAE Flat Washer
2	50CNNE0Y/GC	N/A	1/2"-13 Nylock Nut

### Step 1:

With the vehicle parked on a flat level surface, remove the rear shocks and the rear sway bar mounts from the vehicle. If possible, the installation of these brackets would be easier with the rear end jacked up and the suspension drooped. Keep the factory upper shock bolts, they will be used to bolt the new bracket to the factory location.

### Step 2:

Using Template 1 and 2, mark out and cut the recommended area from the factory mount locations. Cut out and align the template and the factory mount, make sure the cutout for the shock aligns between the template and factory mount. The template is the material that will be removed from the factory bracket. Make sure the two red corners meet each other when laying the template out.

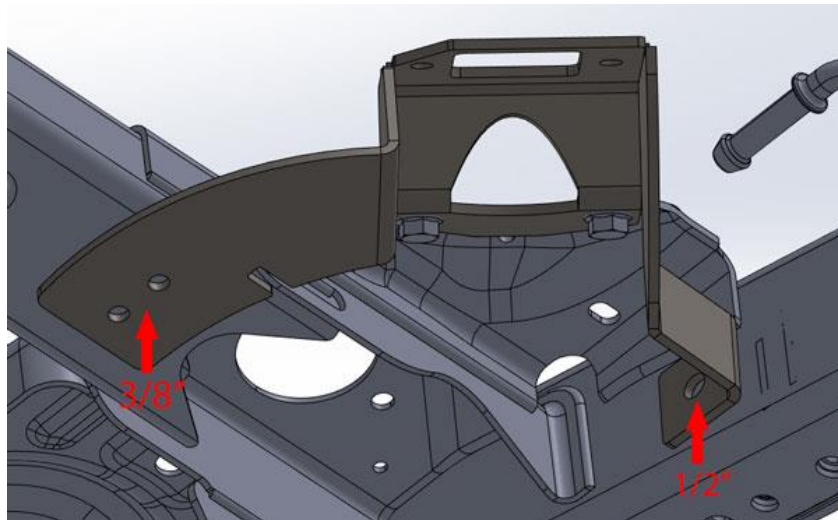


### Step 3:

Test the new brackets using the factory hardware, make sure they sit flat against the factory shock mount, trim away anymore material if necessary. There may be a slight gap between the cross member and the new shock mount.

### Step 4:

With the new shock mounts bolted in their proper locations, mark the bolt holes on the cross member and the side of the frame. Remove the brackets and use a  $13/32$ " drill bit to drill out the crossmembers holes. Use a  $17/32$ " drill bit to drill out the holes on the side of the frame.

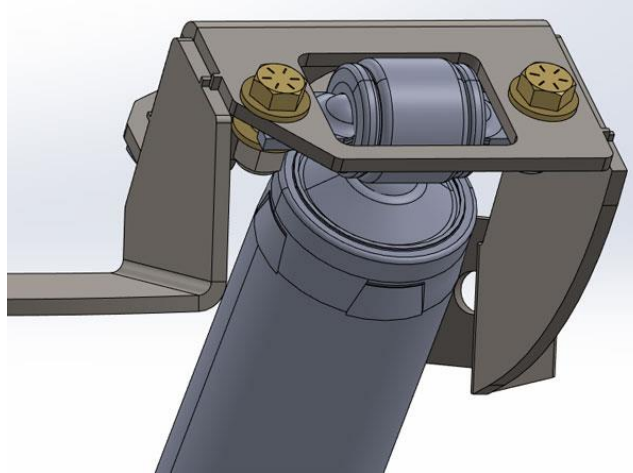


### Step 5:

Give the frame, crossmember, and factory shock mount a good coat of paint to prevent any rusting. Now would be a good time to paint or powder coat the new upper shock mounts as well.

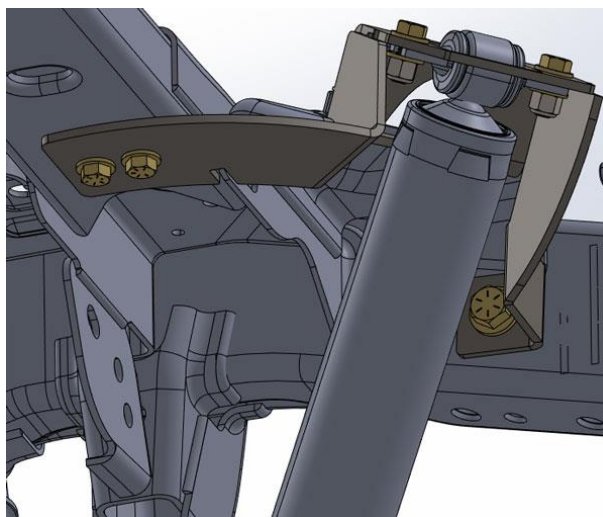
## Step 6:

Bolt the shock to the new upper shock mount extension with the provided 3/8" hardware with a washer on both the bolt head side and nut side. Make sure that the head of the bolts are on top of the new upper shock mount as shown in the image below.



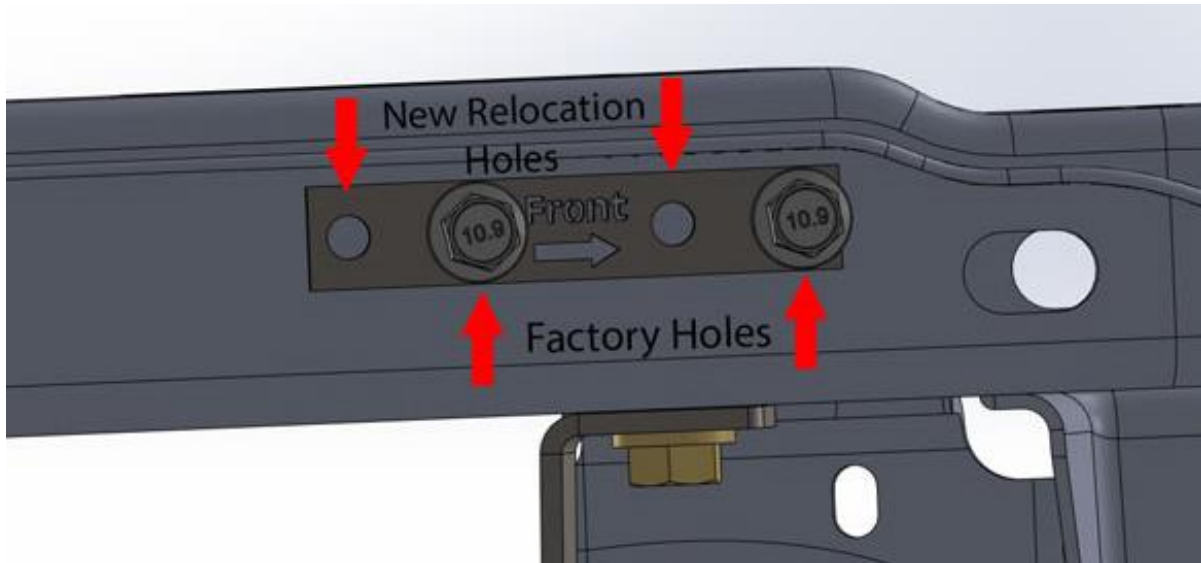
## Step 7:

Using the factory hardware, bolt the new upper shock mounts in the factory mount. Do not fully tighten the factory hardware until you have the bracket fully bolted to the crossmember and frame. Using the provided hardware, bolt the new shock mounts to the cross member with the 3/8" hardware and to the side of the frame with the 1/2" hardware. Use the washers on the bolt head side, and the nuts will go on the inside of the crossmember and the frame.



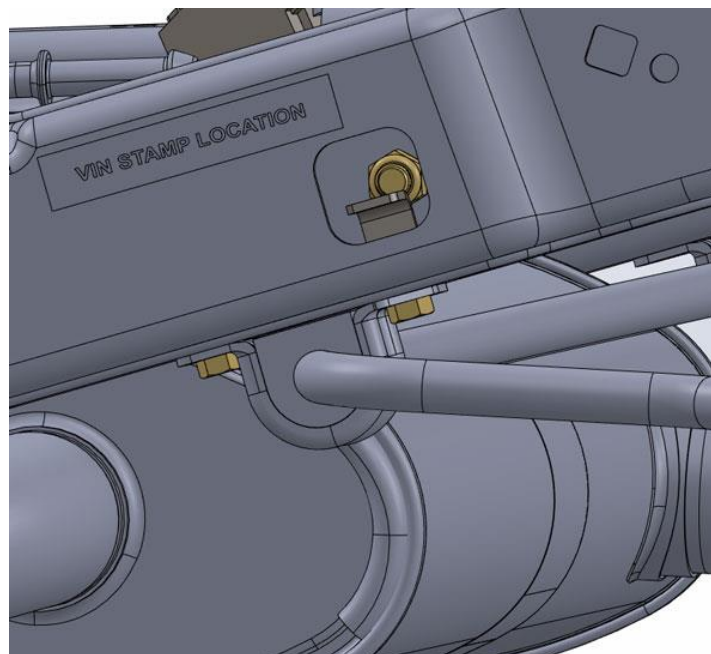
### Step 8:

With the factory sway bar mounts removed, bolt Template 3 in the factory sway bar mount location. Mark out the new bolt holes for the new location for the sway bar mounts. Use the same template for both sides, make sure the template is facing the correct way each time. Use a 13/32" drill bit to drill out the holes.



### Step 9:

Place the appropriate flag nut on the inside of the frame on each side of the Jeep. Using the new flag nuts and the provided 3/8" hardware, mount the rear sway bar in its new location.



## **Step 10:**

We suggest removing the coils and cycling the suspension to ensure proper bump stop placement, so you do not damage your shocks or the new upper shock mount by over traveling or bottoming out your shocks.

# **Congratulations you have completed the installation of your new Jeep JK Rear Upper Shock Mount Extensions!**

### **Professional Services Disclaimer:**

The content of all pages of this website (collectively, the "Website"), such as text, graphics, images, information and other material (collectively, "Content") is for informational purposes only. Any information furnished on this Website is not intended nor implied to be automotive advice and is not intended to replace personal consultation with a qualified automotive service technician, mechanic, or similar automotive professional.

Barnes 4WD has not examined the Content for accuracy, timeliness, completeness, appropriateness, or helpfulness. Barnes 4WD does not endorse any specific tests, products, procedures, opinions, or other information that may be mentioned on this Website. Your reliance upon information and Content obtained by you at or through this Website is solely at your own risk. IN NO EVENT SHALL BARNES 4WD BE LIABLE OR OTHERWISE RESPONSIBLE FOR ANY DAMAGE OR INJURY (INCLUDING DEATH) TO YOU, OTHER PERSONS, OR PROPERTY ARISING FROM ANY USE OF ANY PRODUCT, INFORMATION, IDEA, OR INSTRUCTION CONTAINED IN THE CONTENT.

BARNES 4WD DOES NOT MAKE ANY REPRESENTATION OR WARRANTY, EXPRESS OR IMPLIED, AT LAW OR IN EQUITY, WITH RESPECT TO ANY PRODUCT FEATURED ON THE WEBSITE, INCLUDING WITHOUT LIMITATION WITH RESPECT TO MERCHANTABILITY, FITNESS FOR ANY PARTICULAR PURPOSE, VALUE, VALIDITY, OR ENFORCEABILITY, AND ANY AND ALL SUCH OTHER REPRESENTATIONS OR WARRANTIES ARE HEREBY EXPRESSLY DISCLAIMED.

# Template 1: Driver



# Template 3



# Template 2: Passenger

