

JK Heavy Duty Rear Lower Control Arm and Rear Shock Relocation Bracket

Thank you for purchasing Barnes 4WD

JK Heavy Duty Rear Lower Control Arm and Rear Shock Relocation Bracket

Installation Notes:

- This bracket is designed to replace the OEM Rear Lower Control Arm and Rear Shock Bracket
- This truss fits 2007-2018 Jeep JK and Jeep JKU
- This bracket is designed to move the rear shocks and sway bar up 2". You will need to make sure that you are using the correct shocks for this application and verify that you are bottoming out on your bump-stops before bottoming out your shocks.
- Cutting off existing bracketry is required for installation
- Installation of this kit requires a trained welder.
- Refer to your factory service manual for information regarding the removal of any factory components.

Tools Required:

- Welding machine with the capability of welding at least ¼" steel.
- Proper cutting tool (Grinder with cut off wheel, plasma cutter, cutting torch, etc.)
- Tape Measure

Step 1:

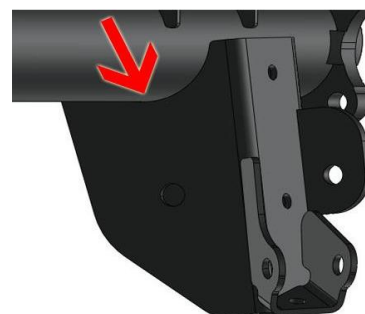
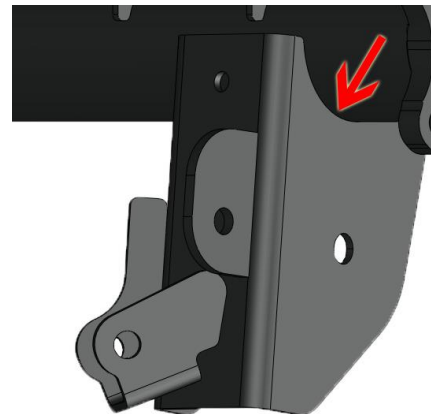
Park the jeep on a level surface and remove the lower control arms, rear shocks, and the rear sway bar.

Step 2:

Measure the location of the OEM bracket on the axle. Make a note of these measurements the Barnes 4WD Jeep JK Rear Lower Control Arm and Rear Shock Relocation Bracket will need to be located in the same location as the OEM Bracket.

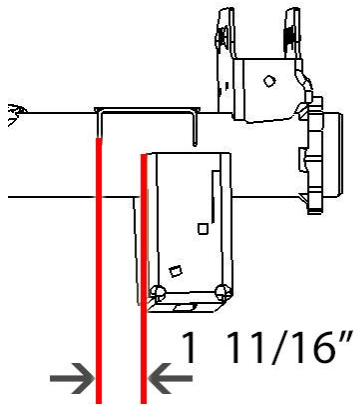
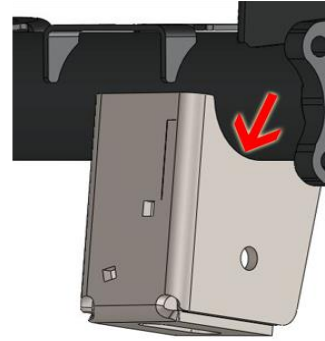
Step 3:

Using the proper cutting tool remove the OEM Rear Lower Control Arm and Rear Shock Bracket. Cut in the locations shown in the pictures below.



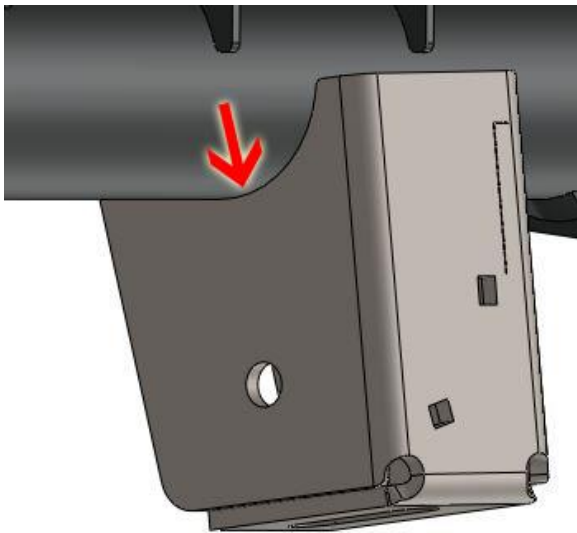
Step 4:

Place the Barnes 4WD Rear Lower Control Arm and Rear Shock Relocation Bracket on the axle. Use the measurement from step 2 to locate the bracket. The bracket should be 1 11/16" from the bump stop bracket as shown in the picture below.



Step 5:

Once the bracket is in the desired location tack weld it into place. In the locations shown in the pictures below.



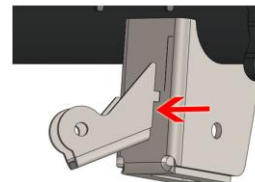
Step 6:

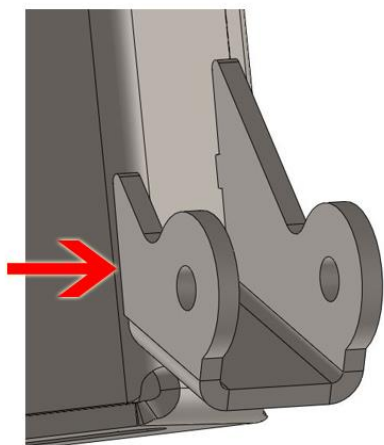
Once tack welded place the shock mount on the lower control arm bracket. The tabs on the shock mount should fit into the lower control arm bracket. The shock mount should angle towards the center of the axle as shown in the picture below.



Step 7:

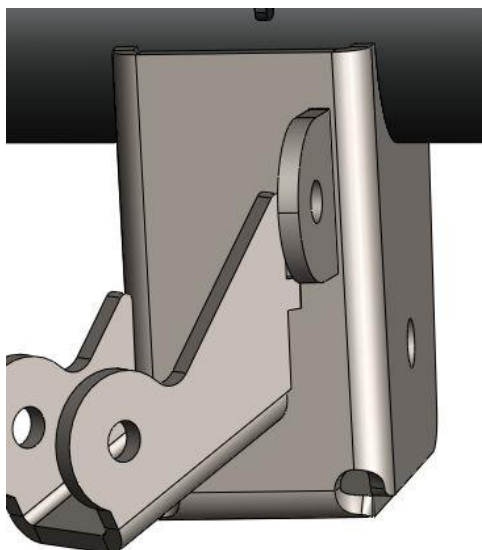
Once the shock mount is in its desired location tack weld it into place in the locations shown in the pictures below.





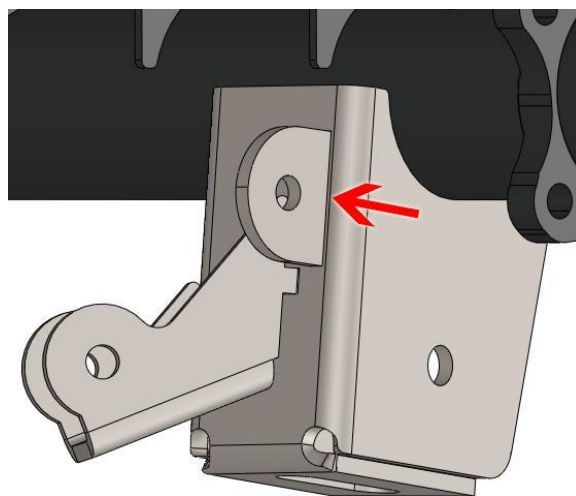
Step 8:

Once the shock mount is tacked into place install the sway bar mount on the lower control arm bracket. The mount should line up with the etched lines on the lower control arm bracket as shown in the picture below.



Step 9:

Once the Sway bar mount is in its desired location tack weld it into place in the location shown in the picture below.



Step 10:

Once the sway bar mount is tacked into place repeat steps 2 through 9 on the opposite side of the jeep.

Step 11:

Once the lower control bracket has been tack welded on the opposite side of the jeep. Test fit the rear lower control arms, rear shocks and the rear sway bar. Make sure to fully cycle the suspension on the jeep to make sure there are no clearance issues.

Step 12:

Once the rear lower control arms, rear shock and the rear sway bar have been test fit fully weld the lower control arm brackets in the places where they were tack welded in the previous steps. Make small welds and move around on the housing to avoid pulling or warping the axle. The bracket is designed to have drain holes that should not be filled with weld.

Congratulations! You have Completed Installation of your Barnes 4WD JEEP JK Heavy Duty Rear Lower Control Arm And Rear Shock Relocation Bracket

Professional Services Disclaimer:

The content of all pages of this website (collectively, the "Website"), such as text, graphics, images, information and other material (collectively, "Content") is for informational purposes only. Any information furnished on this Website is not intended nor implied to be automotive advice and is not intended to replace personal consultation with a qualified automotive service technician, mechanic, or similar automotive professional.

Barnes 4WD has not examined the Content for accuracy, timeliness, completeness, appropriateness, or helpfulness. Barnes 4WD does not endorse any specific tests, products, procedures, opinions, or other information that may be mentioned on this Website. Your reliance upon information and Content obtained by you at or through this Website is solely at your own risk. IN NO EVENT SHALL BARNES 4WD BE LIABLE OR OTHERWISE RESPONSIBLE FOR ANY DAMAGE OR INJURY (INCLUDING DEATH) TO YOU, OTHER PERSONS, OR PROPERTY ARISING FROM ANY USE OF ANY PRODUCT, INFORMATION, IDEA, OR INSTRUCTION CONTAINED IN THE CONTENT. BARNES 4WD DOES NOT MAKE ANY REPRESENTATION OR WARRANTY, EXPRESS OR IMPLIED, AT LAW OR IN EQUITY, WITH RESPECT TO ANY PRODUCT FEATURED ON THE WEBSITE, INCLUDING WITHOUT LIMITATION WITH RESPECT TO MERCHANTABILITY, FITNESS FOR ANY PARTICULAR PURPOSE, VALUE, VALIDITY, OR ENFORCEABILITY, AND ANY AND ALL SUCH OTHER REPRESENTATIONS OR WARRANTIES ARE HEREBY EXPRESSLY DISCLAIMED.