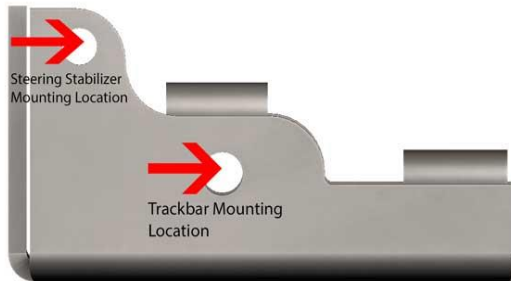


## JK HEAVY DUTY STOCK FRONT TRACKBAR BRACKET

Thank you for purchasing Barnes 4WD  
JK HEAVY DUTY STOCK FRONT TRACKBAR BRACKET!

### Installation Notes:

- Installation of this Product requires a trained welder
- Refer to your vehicles factory service manual for removal of any factory components
- Factory hardware will be reused in this application.
- Upon Installation the Steering Stabilizer will be relocated to the top side of tie rod. Below is a picture of the bracket with the mounting locations noted for the Steering Stabilizer and the Trackbar.



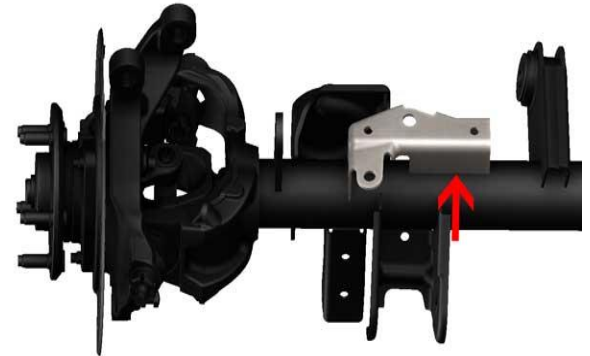
### Tools Required

- Welding machine with the capability of welding at least 1/4" thick steel
- Proper cutting tool (Grinder with cut off wheel, plasma cutter, cutting torch, etc.)
- Grinder
- Ratchet and Metric Socket Set

Step 1:  
Unbolt trackbar and steering stabilizer from original location on axle side stock bracket.

### Step 2:

Remove O.E.M trackbar bracket using cutting tool. Cut in locations indicated by arrows in pictures below.



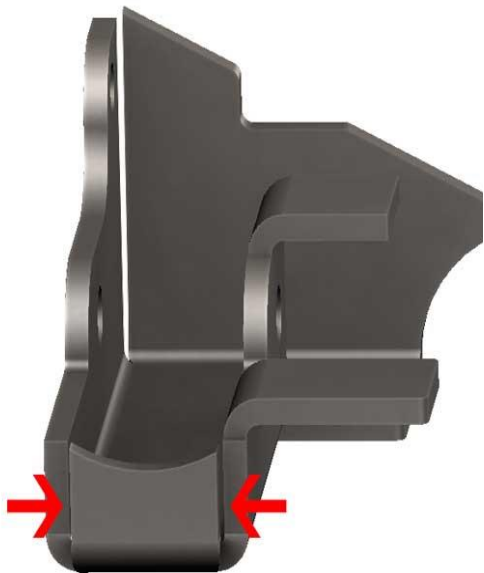
Step 3:

Prep axle for installation of new bracket.  
Grind the surface until smooth where O.E.M  
bracket was removed.

Step 4:

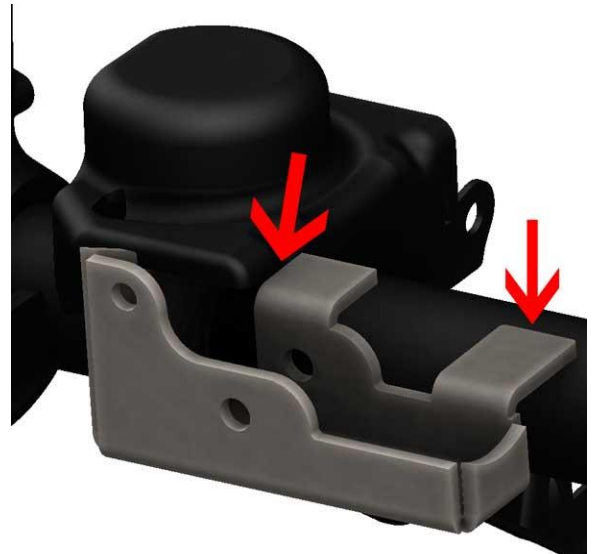
While still uninstalled fill corners of new  
trackbar bracket with weld.

Weld In locations indicated by arrows in  
picture below.



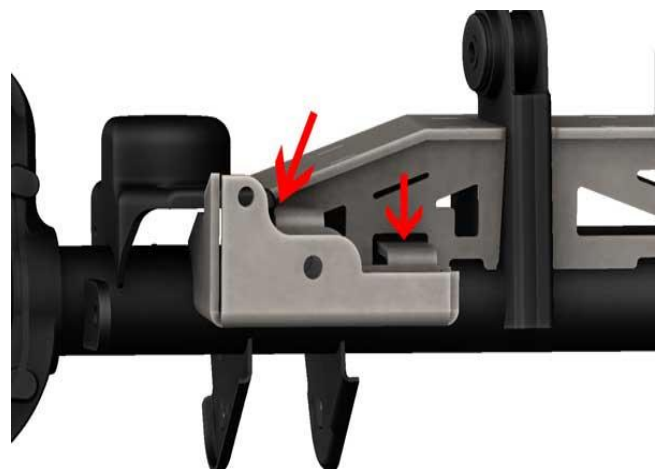
Step 5:

Position trackbar bracket on axle. The  
middle tab of the trackbar bracket should  
be touching the side of the axle coil spring  
mount. The outermost tab should set on  
the axle tube. See picture below.



Installation Note\*

If you have purchased our PRO SERIES JEEP  
JK FRONT AXLE TRUSS. You will need to  
locate the outermost tab underneath the  
rectangular notch, in the axle truss. Fill the  
gap between the top of the notch and the  
tab with weld. The middle tab on the  
bracket will still be touching the side of the  
coil spring mount. See image below.



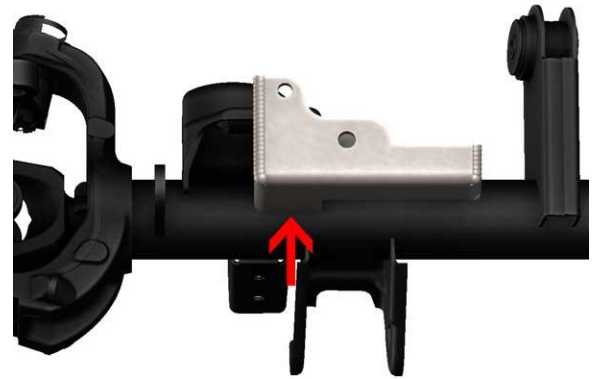
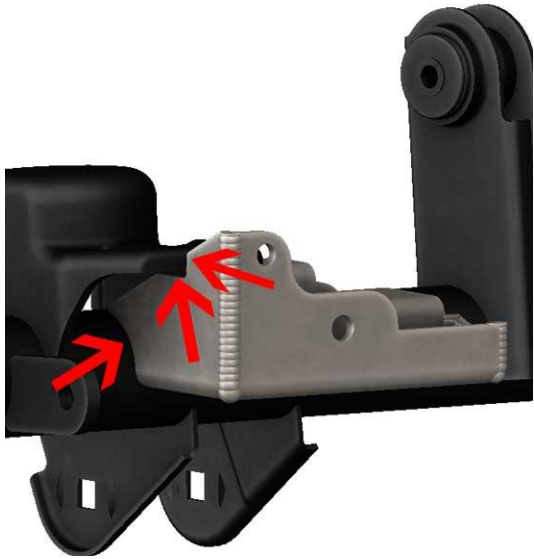
Step 6:

Tack Weld the trackbar bracket into place.

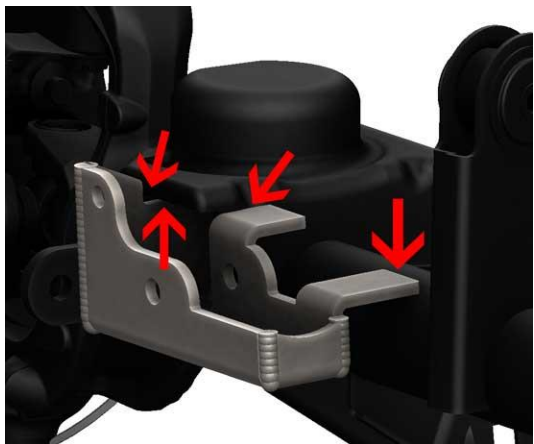
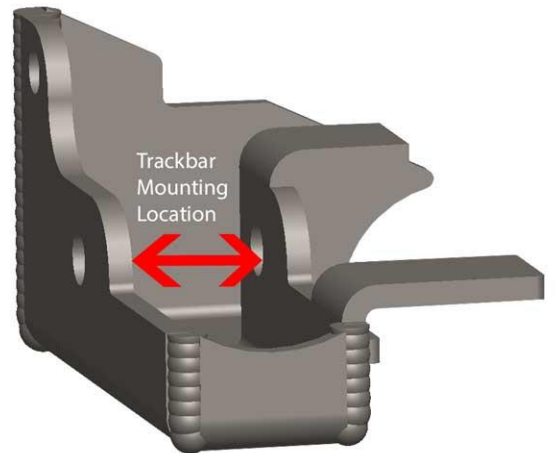
Step 7:  
Verify location of trackbar. Lower trackbar and steering stabilizer bracket into place and insert bolt through bracket.

Step 9:  
With location verified. Unbolt trackbar and move out of the way.

Step 10:  
Fully weld bracket into place on axle. Weld where indicated in pictures.

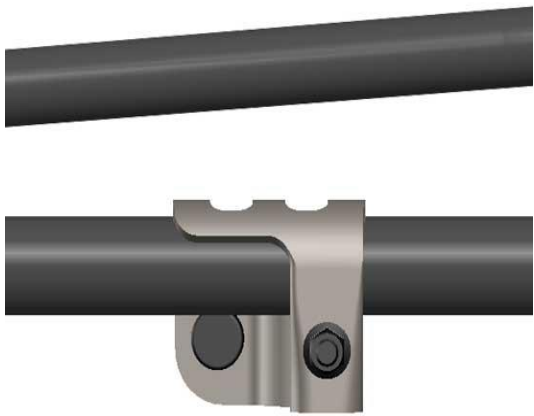


Step 11:  
Now that you have the Front Trackbar Bracket Welded into Place. Bolt your trackbar into place.



Step 12:  
Loosen the steering stabilizer bracket on the tie rod. You will need to rotate the steering stabilizer bracket 90° from its stock location. This puts the bolt on the top side of the tie rod.

### Stock Location

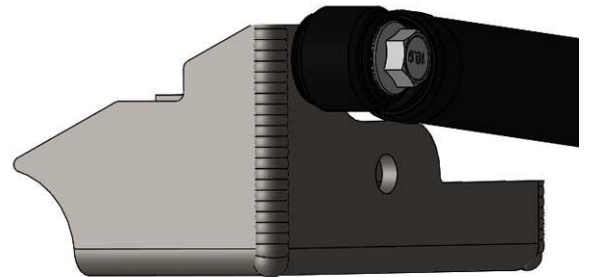


The Steering Stabilizer will mount to the outside of the trackbar bracket.

### Rotated 90°



Orientation of stabilizer end will change. See picture below.



Tighten the stabilizer bracket into place.

The orientation of your steering stabilizer will look like the picture below.



Congratulations! You have Completed installation of Barnes 4WD JK HEAVY DUTY STOCK FRONT TRACKBAR BRACKET!

Disclaimer:

Professional Services Disclaimer:

The content of this Website, such as text, graphics, images, information and other material (collectively, "Content") is for informational purposes only. Any information furnished on this Website is not intended nor implied to be automotive advice and is not intended to replace personal consultation with a qualified automotive service technician, mechanic or similar automotive professional.

Barnes 4WD has not examined the Content for accuracy, timeliness, completeness, appropriateness, or helpfulness. Barnes 4WD does not endorse any specific tests, products, procedures, opinions, or other information that may be mentioned on this Website. Your reliance upon information and Content obtained by you at or through this Website is solely at your own risk. IN NO EVENT SHALL BARNES 4WD BE LIABLE OR OTHERWISE RESPONSIBLE FOR ANY DAMAGE OR INJURY (INCLUDING DEATH) TO YOU, OTHER PERSONS, OR PROPERTY ARISING FROM ANY USE OF ANY PRODUCT, INFORMATION, IDEA, OR INSTRUCTION CONTAINED IN THE CONTENT.