

## JK FRONT FRAME TRACK BAR BRACKET ULTRA 100

Thank you for purchasing Barnes 4WD

JK FRONT FRAME TRACK BAR BRACKET ULTRA  
100

### Installation Notes:

- This is our Jeep Wrangler JK front frame replacement track bar bracket; this bracket is designed to be a direct replacement for your O.E.M. track bar bracket.
- Installation of this product requires a trained welder.
- Removal of existing bracketry is required.
- Refer to your vehicles factory service manual for removal of any factory components.
- This bracket will fit 2 door and 4 door Jeep Wrangler JKs from 2007-2017

### Tools Required:

- Welding machine with the capability of welding at least ¼" thick steel.
- Proper cutting tool (Grinder with cut off wheel, plasma cutter, cutting torch, etc.)
- Grinder
- Ratchet and metric socket set
- Tape Measure

#### Step 1:

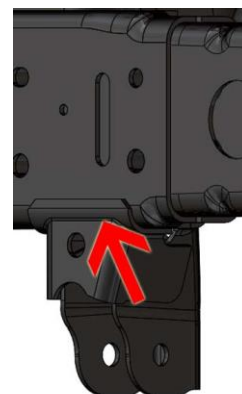
Park Jeep on level surface. Remove front track bar at frame.

#### Step 2:

Measure the location of the OEM bracket on the frame. Make a note of these measurements. The Barnes 4WD JK Front Frame Track Bar Bracket will need to be located in the same location as the OEM Bracket.

#### Step 3:

Using Proper cutting tool remove OEM front frame track bar bracket. Cut in location indicated by arrows.



Step 4:

Prep frame for installation of new bracket. Grind the surface smooth where OEM bracket was removed.

Step 5:

Locate the Barnes 4WD JK Front Frame Track Bar Bracket, by placing it where the OEM bracket was. Tack weld into place.



Step 6:

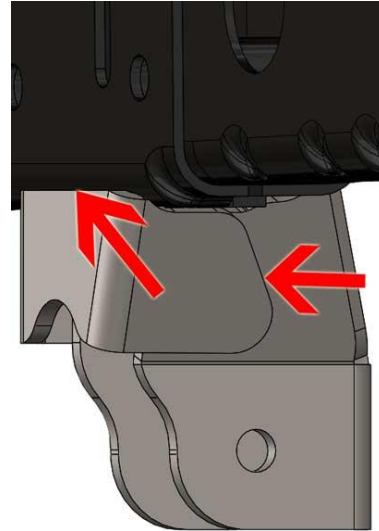
Verify location by bolting track bar into place.

Step 7:

With location verified unbolt track bar. Fully Weld the JK Front Frame Track Bar Bracket on frame.

Step 8:

The JK Front Frame Track Bar Support will encompass, the JK Front Frame Track Bar Bracket. The JK Front Frame Track Bar Support will need to be welded onto the frame and on each side where it contacts the JK Front Frame Track Bar Bracket.



Step 9:

With all components fully welded, bolt track bar back into place.

**Congratulations! You have completed**

**Installation of your Barnes 4WD**

**JK FRONT FRAME TRACK BAR BRACKET**

**ULTRA 100**

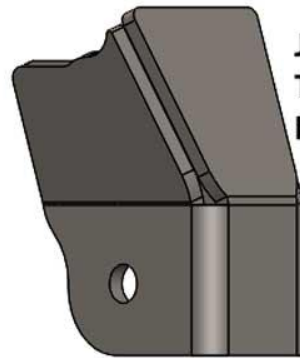


Professional Services Disclaimer:

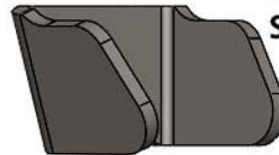
The content of this Website, such as text, graphics, images, information and other material (collectively, "Content") is for informational purposes only. Any information furnished on this Website is not intended nor implied to be automotive advice and is not intended to replace personal consultation with a qualified automotive service technician, mechanic or similar automotive professional.

Barnes 4WD has not examined the Content for accuracy, timeliness, completeness, appropriateness, or helpfulness. Barnes 4WD does not endorse any specific tests, products, procedures, opinions, or other information that may be mentioned on this Website. Your reliance upon information and Content obtained by you at or through this Website is solely at your own risk. IN NO EVENT SHALL BARNES 4WD BE LIABLE OR OTHERWISE RESPONSIBLE FOR ANY DAMAGE OR INJURY (INCLUDING DEATH) TO YOU, OTHER PERSONS, OR PROPERTY ARISING FROM ANY USE OF ANY PRODUCT, INFORMATION, IDEA, OR INSTRUCTION CONTAINED IN THE CONTENT.

## Items Included with Kit:



**JK FRONT FRAME  
TRACK BAR  
BRACKET**



**JK FRONT FRAME  
TRACK BAR  
SUPPORT**