

## JEEP TJ, LJ REAR COIL SPRING BRACKETS

Thank you for purchasing Barnes4WD

JEEP TJ REAR COIL SPRING BRACKETS!

### Installation Notes:

- Our Jeep TJ rear coil spring brackets are designed to go in place of your factory brackets and are a great option when swapping an axle or replacing damaged parts.
- These brackets fit 1997-2006 Jeep Wrangler TJ and 2003-2006 Jeep Wrangler LJ
- Installation of this product requires a trained welder
- Removal of existing bracketry is required for installation
- Refer to your vehicles factory service manual for removal of any factory components

### Tools Required:

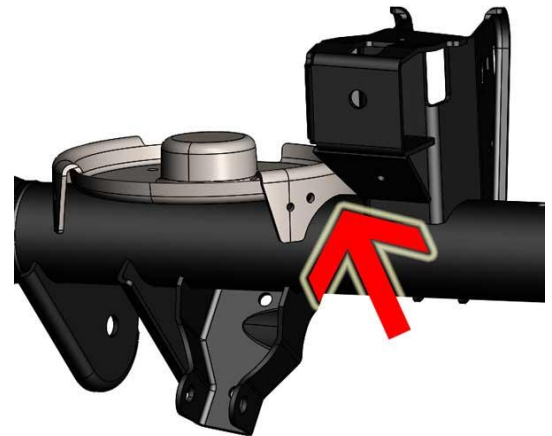
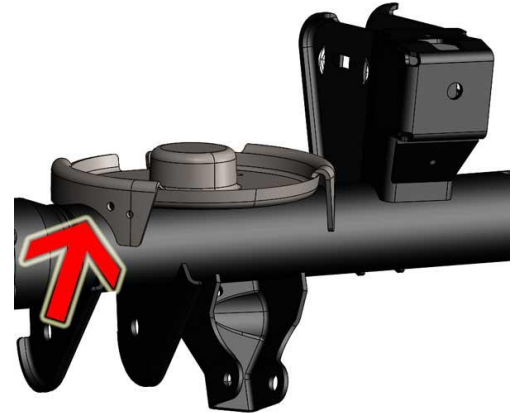
- Welding machine with the capability of welding at least 1/4" thick steel.
- Proper cutting tool (Grinder with cut off wheel, plasma cutter, cutting torch, etc.)
- Grinder
- Ratchet and Standard Socket Set
- C-Clamp
- Tape Measure

### Step 1:

Measure location where OEM Brackets sit on axle tube.

### Step 2:

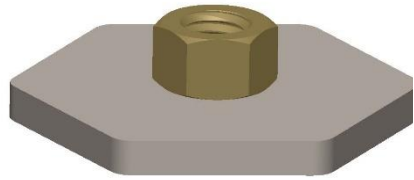
Using proper cutting tool remove OEM rear coil spring brackets. Cut in location indicated by arrows in pictures below.



### Step 3:

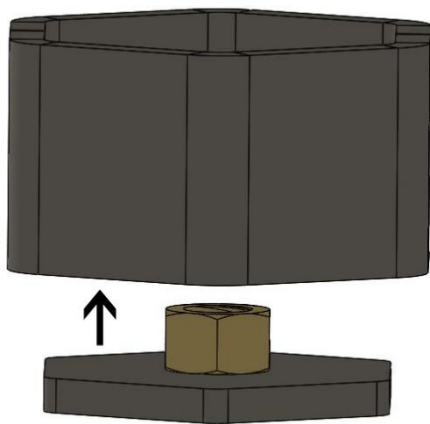
Assemble TJ Rear Axle Coil Spring Mount Cap to 3/8"-16 Nut

Weld 3/8" Nut onto Coil Spring Mount Cap. Making sure that the 3/8" nut is centered with the hole in the Mount Cap.

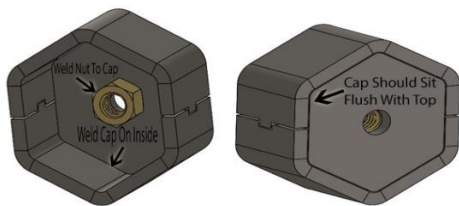


**Step 4:**

Assemble the center halves to the mount cap and 3/8" hex nut assembly.

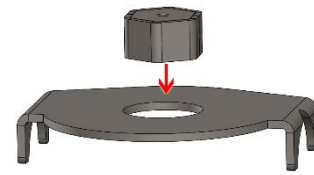


Weld the Mount Cap to the center halves flush. Welding on the inside of the cap.

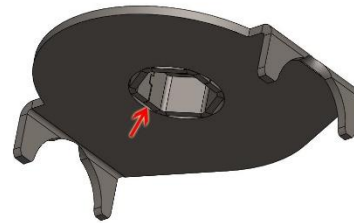


**Step 5:**

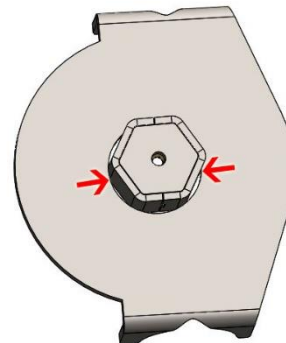
Assemble the center assembly to the TJ Rear Axle Coil Spring Mount.



Ensure the center assembly sits flush with bottom of TJ Rear Axle Coil Spring Mount.

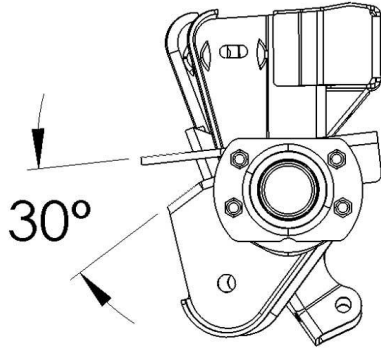


Weld around center assembly on top side of TJ Rear Axle Coil Spring Mount.

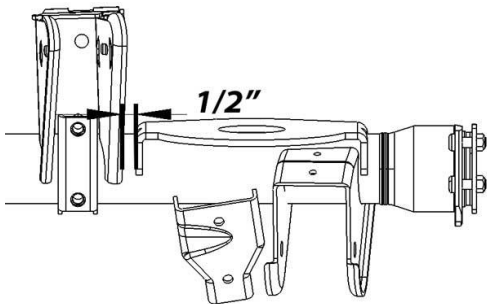


**Step 6:**

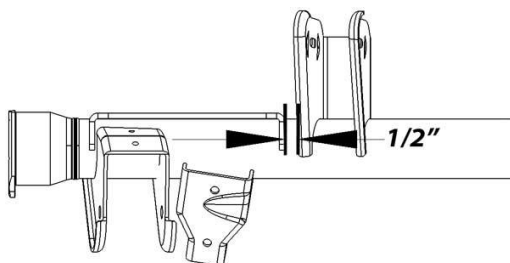
Locate the coil spring brackets on the axle. Both brackets will set at a 30° angle. Measuring from the top of the coil spring bracket, to the tip edge in the lower control arm mount.



To locate the coil spring bracket that is on the trackbar side of the axle. You will need to locate the outside face of the coil spring bracket  $\frac{1}{2}$ " away from the outside face of the upper control arm mount. Tack weld into place.



To locate the coil spring bracket on the drivers' side of the axle. Locate the inner face of coil spring bracket  $\frac{1}{2}$ " away from the outer face of the upper control arm mount. Tack weld into place.



#### Step 7:

Test fit axle into Jeep. With the measurements from step 6 satisfied. Fully weld the coil spring brackets into place.

### **Congratulations! You have completed Installation of your Barnes 4WD JEEP TJ REAR COIL SPRING BRACKETS**

#### Professional Services Disclaimer:

The content of this Website, such as text, graphics, images, information and other material (collectively, "Content") is for informational purposes only. Any information furnished on this Website is not intended nor implied to be automotive advice and is not intended to replace personal consultation with a qualified automotive service technician, mechanic or similar automotive professional.

Barnes 4WD has not examined the Content for accuracy, timeliness, completeness, appropriateness, or helpfulness. Barnes 4WD does not endorse any specific tests, products, procedures, opinions, or other information that may be mentioned on this Website. Your reliance upon information and Content obtained by you at or through this Website is solely at your own risk. IN NO EVENT SHALL BARNES 4WD BE LIABLE OR OTHERWISE RESPONSIBLE FOR ANY DAMAGE OR INJURY (INCLUDING DEATH) TO YOU, OTHER PERSONS, OR PROPERTY ARISING FROM ANY USE OF ANY PRODUCT, INFORMATION, IDEA, OR INSTRUCTION CONTAINED IN THE CONTENT.