

JEEP TJ, LJ, MJ, XJ AND ZJ FRONT AXLE TRACK BAR BRACKET

Thank you for purchasing Barnes 4WD

JEEP TJ, LJ, MJ, XJ and ZJ FRONT AXLE TRACK BAR BRACKET!

INSTALLATION NOTES:

- Our Jeep TJ, LJ, MJ, XJ and ZJ front axle track bar bracket is designed to go in place of your OEM bracket and are a great option when swapping an axle or replacing damaged parts.
- Installation of this product requires a trained welder.
- Removal of existing bracketry is required for installation.
- Refer to your vehicles factory service manual for removal of any factory components.
- Since this bracket is made from thicker material the OEM steering stabilizer bracket will need to be trimmed slightly where it will contact this bracket.

Tools Required:

- Welding machine with the capability of welding at least ¼" thick steel.
- Proper cutting tool (Grinder with cut off wheel, plasma cutter, cutting torch, etc.)
- Grinder
- Ratchet and Standard Socket Set
- Tape Measure

Step 1:

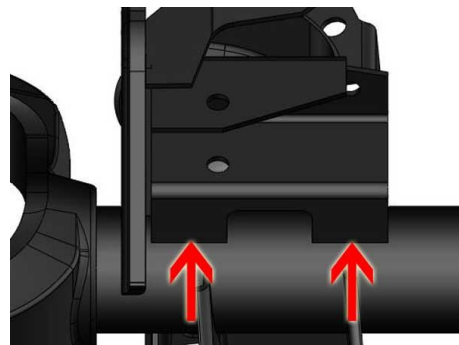
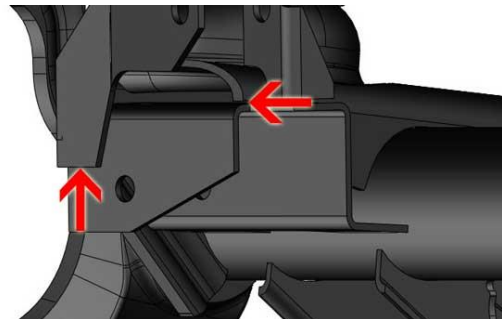
Park Jeep on level surface. Remove front track bar.

Step2:

Measure the location of the OEM bracket on the axle. Make a note of these measurements the Barnes 4WD Jeep Front Axle Track Bar Bracket will need to be located in the same location as the OEM Bracket.

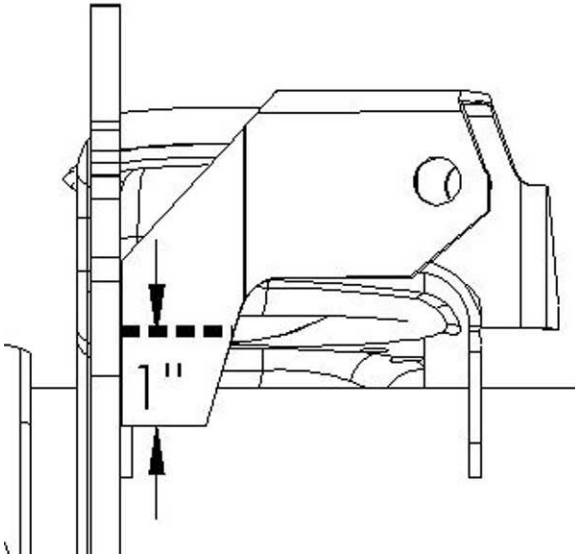
Step 3:

Using proper cutting tool remove OEM front axle track bar bracket. Cut in location indicated by arrows in the pictures below.



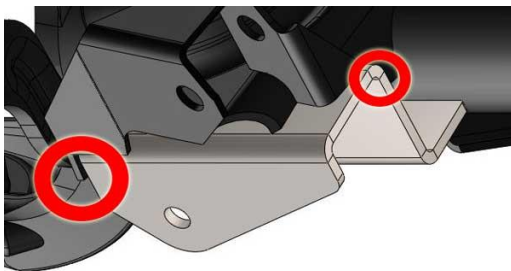
Step 4:

Cut the OEM steering stabilizer bracket 1" from the bottom of the bracket as shown in the picture below.



Step 5:

Locate the Barnes 4WD Jeep Front Axle Track Bar Bracket by placing it where the OEM bracket was. Slide the Barnes 4WD Jeep Front Axle Track Bar Bracket until it makes contact with the coil spring bucket. It will make contact with the side of the coil spring bucket as well as the back.



Step 6:

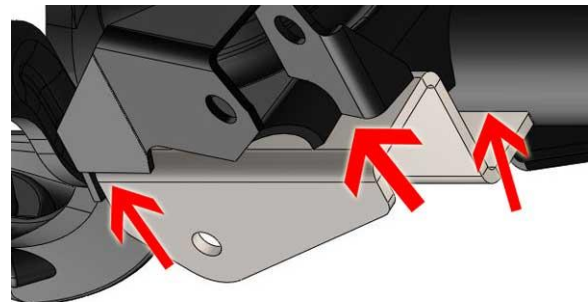
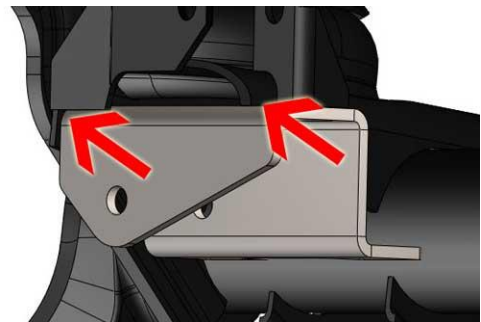
Once the Barnes 4WD Jeep Front Axle Track Bar Bracket is located on the axle, tack weld it to the axle. Remeasure the location of the bracket to make sure it is in the OEM location, then bolt trackbar into new bracket.

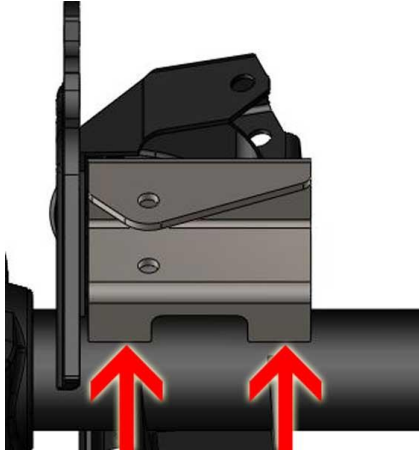
Step 7:

With location verified, unbolt and remove trackbar.

Step 8:

With the placement from step 5 satisfied. Fully weld the Barnes 4WD Jeep Front Axle Track Bar Bracket into place at the locations shown in the pictures below.





**Congratulations! You have Completed
Installation of your Barnes4WD
JEEP TJ, LJ, MJ, XJ AND ZJ FRONT AXLE TRACK
BAR BRACKET**

Professional Services Disclaimer:

The content of this Website, such as text, graphics, images, information and other material (collectively, "Content") is for informational purposes only. Any information furnished on this Website is not intended nor implied to be automotive advice and is not intended to replace personal consultation with a qualified automotive service technician, mechanic or similar automotive professional.

Barnes 4WD has not examined the Content for accuracy, timeliness, completeness, appropriateness, or helpfulness. Barnes 4WD does not endorse any specific tests, products, procedures, opinions, or other information that may be mentioned on this Website. Your reliance upon information and Content obtained by you at or through this Website is solely at your own risk. IN NO EVENT SHALL BARNES 4WD BE LIABLE OR OTHERWISE RESPONSIBLE FOR ANY DAMAGE OR INJURY (INCLUDING DEATH) TO YOU, OTHER PERSONS, OR PROPERTY ARISING FROM ANY USE OF ANY PRODUCT, INFORMATION, IDEA, OR INSTRUCTION CONTAINED IN THE CONTENT.