

## JEEP TJ AND LJ REAR COIL SPRING RELOCATION KIT

Thank you for purchasing Barnes4WD

JEEP TJ AND LJ REAR COIL SPRING RELOCATION KIT!

Installation Notes:

- Our Jeep TJ and LJ Coil Spring Relocation Kit can be used for many different end results. This kit can be used to locate the upper coil spring in a vertical position, or when stretching your wheel base. The final location will be dependent on the end users intended goal.
- Installation of this product requires a trained welder
- Cutting off existing bracketry, and cutting of frame is required for installation
- Refer to your vehicles factory service manual for removal of any factory components

Tools Required:

- Welder
- Proper cutting tool (Grinder with cut off wheel, plasma cutter, cutting torch, etc.)
- C-Clamp
- Tape Measurer

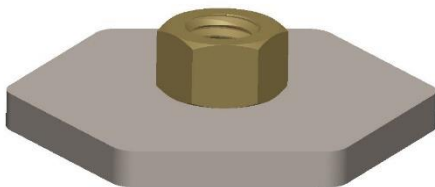
### Step 1:

Using the proper cutting tool remove the OEM frame side rear coil spring brackets.

### Step 2:

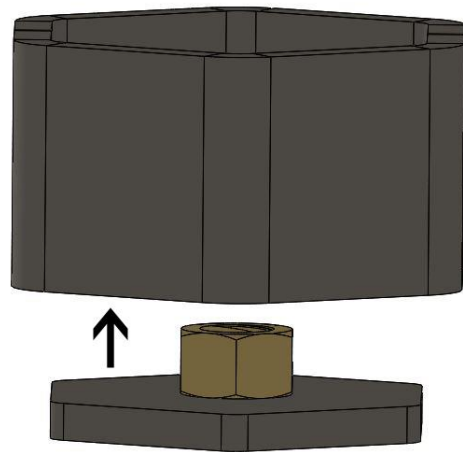
Assemble Mount Cap, and 3/8" Hex Nut

Weld 3/8" Hex Nut onto Coil Spring Cap. Making sure that the 3/8" hex nut is centered with hole in Mount Cap.

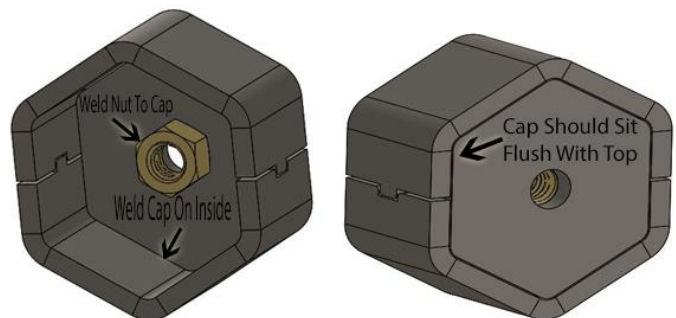


### Step 3:

Weld Center Halves to Mount Cap and 3/8" hex nut assembly

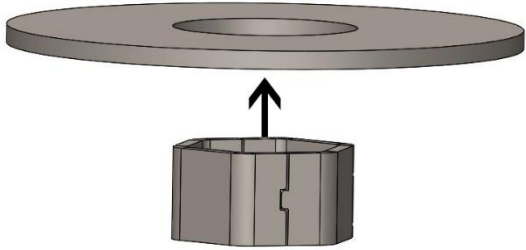


Weld the Mount Cap to the Center Halves flush. Welding on the inside of the cap.

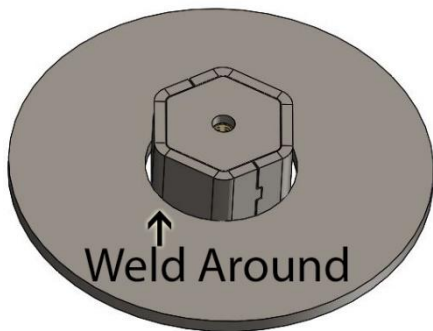
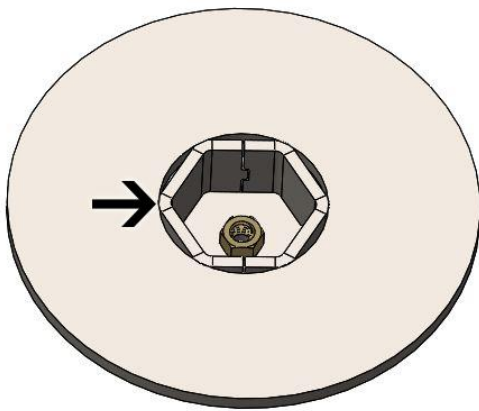


### Step 4:

Weld the Center Halves to the Coil Spring Bottom. Making sure Center Halves are flush with Coil Spring Bottom. Weld the Center Halves around outside of Coil Spring Bottom.



Make Sure Center Halves are Flush with Coil Spring Bottom

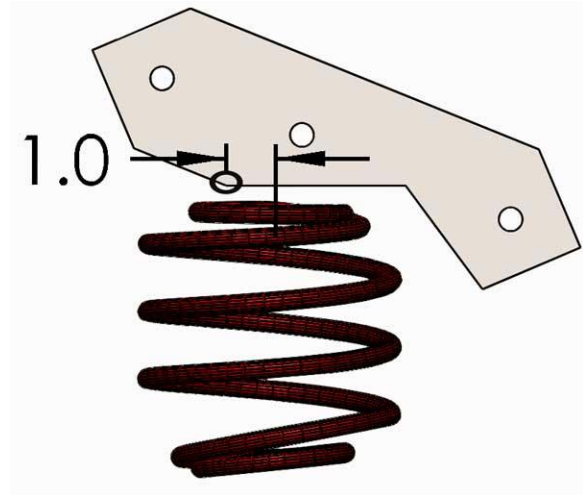


Step 5:

Depending on desired end result (i.e. wheel base stretch or changing coil spring angle)

Locate top center of coil spring in desired location. Then locate frame reinforcement plate, to center of spring. The center point of the spring will be located

at a 1" inch off the bottom edge of the Frame Reinforcement Plate. (circled in the picture below)



Step 6:

Using C-Clamp, clamp Frame Reinforcement Plate in proper location (determined in step 5) onto outside of frame. Using the location of the Frame Reinforcement Plate as a template, notch the frame.



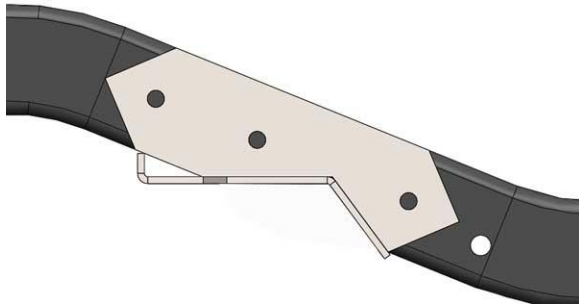
The arrow indicates where the frame will be notched. (Keep in mind that the location can vary depending on application).

Step 7:

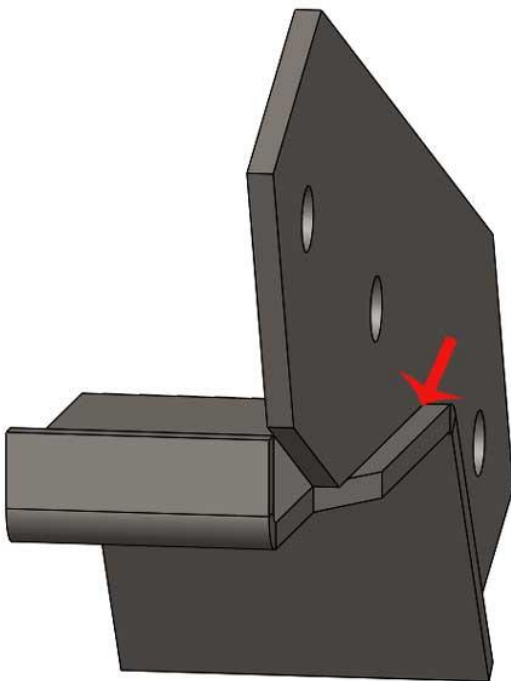
Now that the frame is notched.



Use the Stretch Perch to ensure correct fitment to the frame.



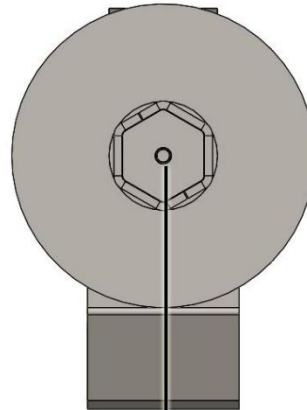
Make sure Stretch Perch edge is offset 1/4" inch with Frame Reinforcement Plate. As pictured below. DO NOT WELD IN PLACE YET.



Step 8:

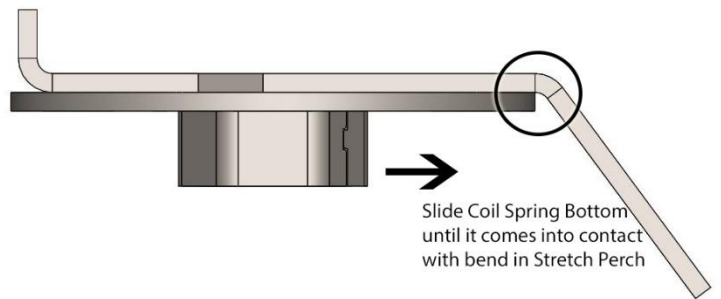
Centering Coil Retainer assembly to Stretch Perch.

The center point of the Coil Retainer assembly will be the center of the hole in the Mount Cap. This will be 1 3/4" inches off the outermost point of the Stretch Perch.



1.75" ← →

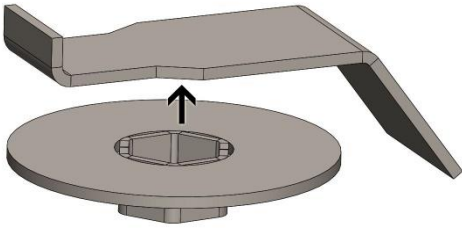
Slide the Coil Spring Bottom until it comes into contact with the bend of the Stretch Perch.



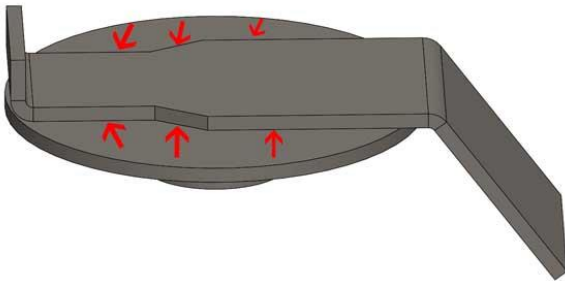
Slide Coil Spring Bottom until it comes into contact with bend in Stretch Perch

Step 9:

Weld Coil Retainer Assembly to Stretch Perch.

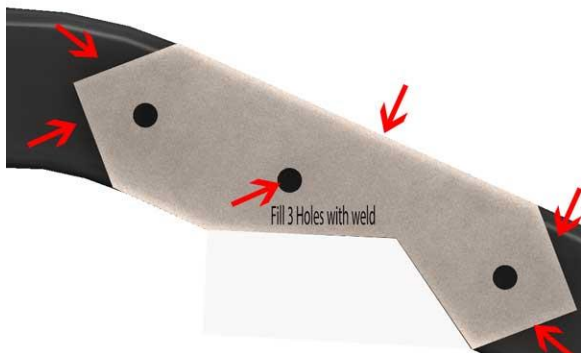


Weld around bottom of Stretch Perch on both sides.



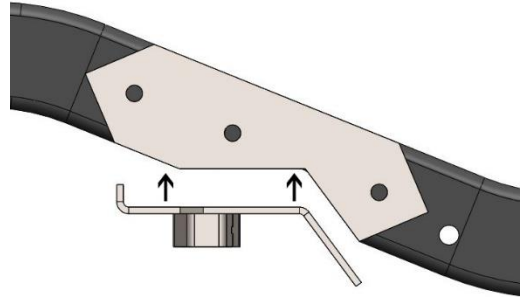
Step 10:

With C-Clamps still on. Weld Frame Reinforcement Plate onto outside of frame. Only weld where indicated by arrows. Fill hole in Frame Reinforcement Plate with weld.

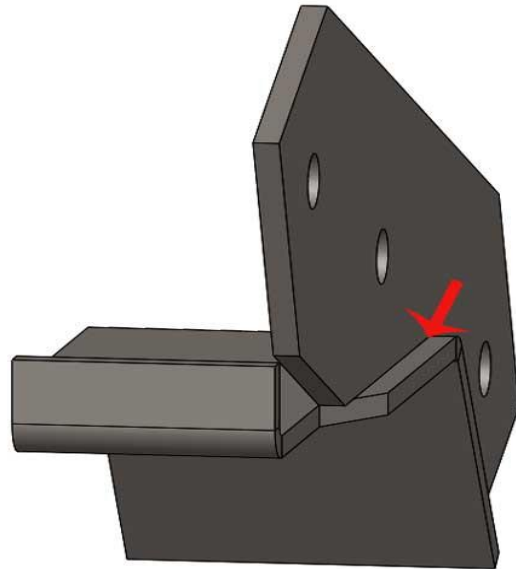


Step 11:

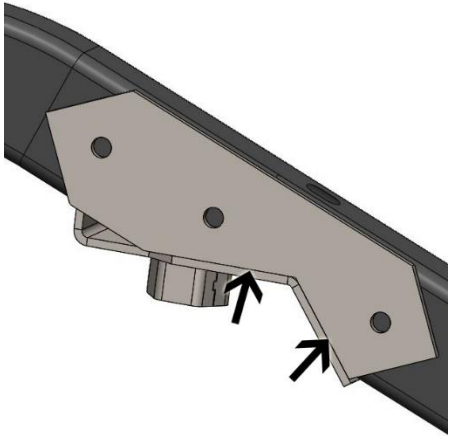
Weld Stretch Perch Assembly to Frame Reinforcement Plate and frame. Making sure Stretch Perch edge is offset 1/4" inch from Frame Reinforcement Plate.



Offset 1/4" inch Pictured Below

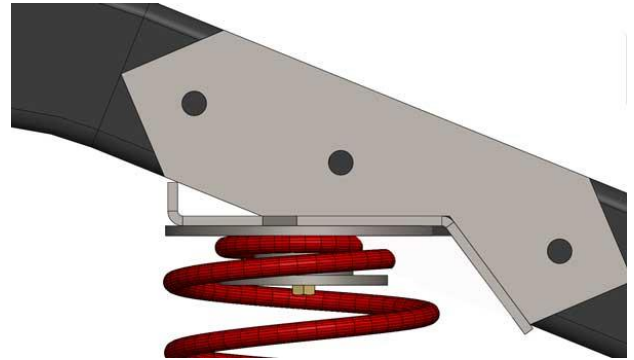


Arrows indicate where to weld.



Step 13:

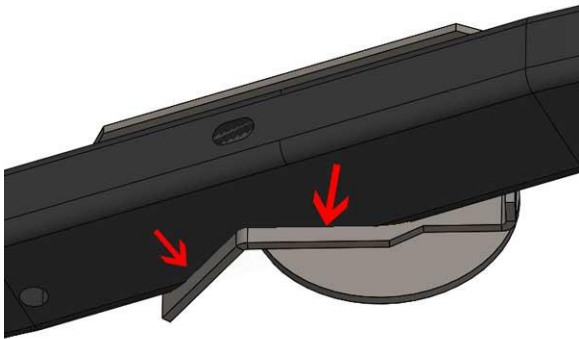
Bolt Coil Spring Retainer on Center Halves.



Step 14:

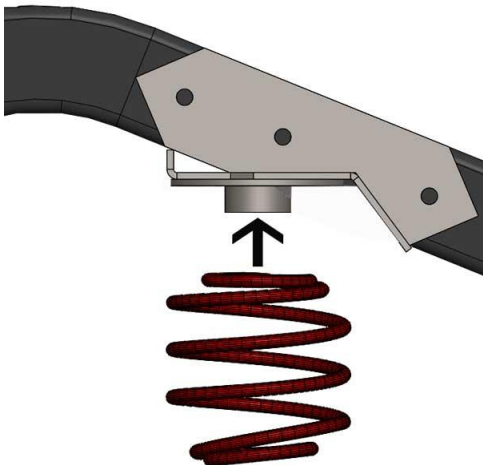
Repeat 1-13 on other side of frame.

Congratulations! You have Completed installation of  
Barnes 4WD JEEP TJ AND LJ REAR COIL SPRING  
RELOCATION KIT!



Step 12:

Locate Coil Spring around Center Halves.



Disclaimer:

Professional Services Disclaimer:

The content of this Website, such as text, graphics, images, information and other material (collectively, "Content") is for informational purposes only. Any information furnished on this Website is not intended nor implied to be automotive advice and is not intended to replace personal consultation with a qualified automotive service technician, mechanic or similar automotive professional.

Barnes 4WD has not examined the Content for accuracy, timeliness, completeness, appropriateness, or helpfulness. Barnes 4WD does not endorse any specific tests, products, procedures, opinions, or other information that may be mentioned on this Website. Your reliance upon information and Content obtained by you at or through this Website is solely at your own risk. IN NO EVENT SHALL BARNES 4WD BE LIABLE OR OTHERWISE RESPONSIBLE FOR ANY DAMAGE OR INJURY (INCLUDING DEATH) TO YOU, OTHER PERSONS, OR PROPERTY ARISING FROM ANY USE OF ANY PRODUCT, INFORMATION, IDEA, OR INSTRUCTION CONTAINED IN THE CONTENT.

PARTS LIST

