

## JEEP JK REAR TRACK BAR BRACKET

Thank you for purchasing Barnes 4WD

JEEP JK REAR TRACK BAR BRACKET!

### Installation Notes:

- Installation of this product requires a trained welder
- Refer to your vehicles factory service manual for removal of any factory components.
- Factory hardware will be reused in this application
- Upon installation this bracket will give you 4 different mounting options. This will include the stock location all the way up to 3 inches above stock in 1-inch increments.

### Tools Required:

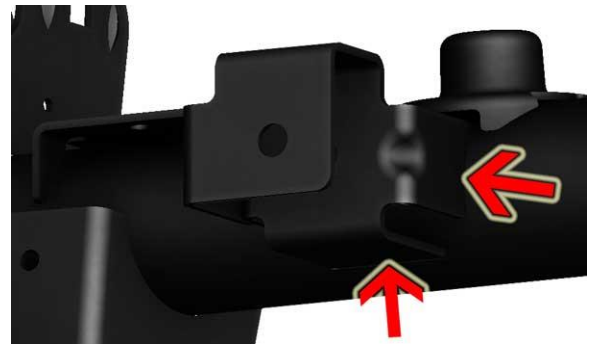
- Welding Machine with the capability of welding at least ¼" thick steel
- Proper cutting tool (Grinder with cut off wheel, plasma cutter, cutting, torch, etc.)
- Grinder
- Ratchet and Metric Socket Set

### Step 1:

Unbolt trackbar from stock axle trackbar bracket.

### Step 2:

Remove O.E.M trackbar bracket using cutting tool. Cut in locations indicated by arrows in pictures below.

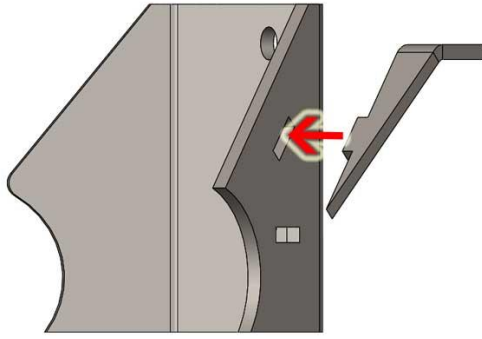


### Step 3:

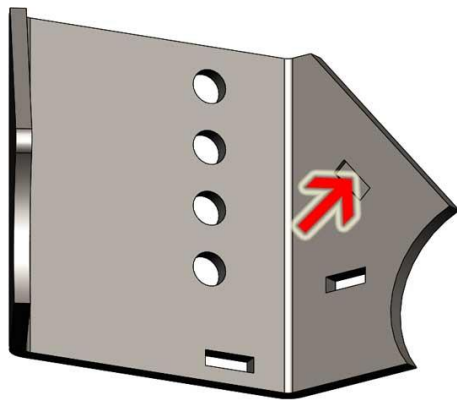
Prep axle for installation of new bracket. Grind the surface smooth where O.E.M bracket was removed.

### Step 4:

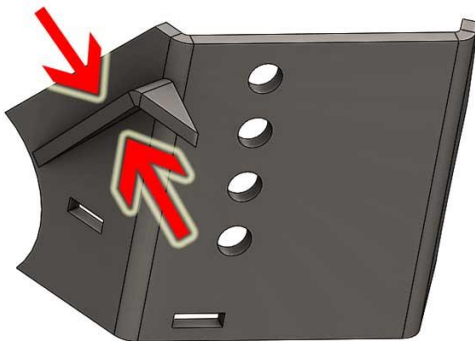
Insert tab of Jk Rear Track Bar Upper Brace, into top notch of Jk Rear Track Bar Inner.



Fill in notch with weld.

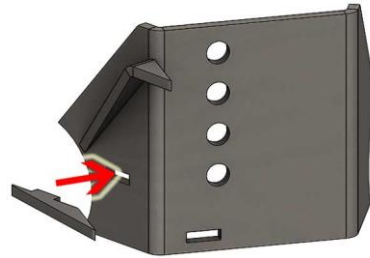


Weld edges where indicated by arrows in pictures below.

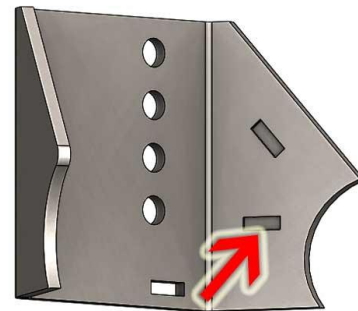


Step 5:

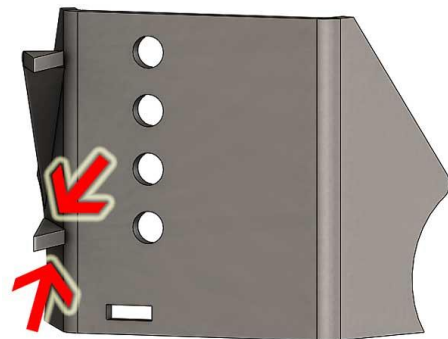
Insert tab of Jk Rear Track Bar Lower Brace, into bottom notch of Jk Rear Track Bar Inner.



Fill Notch with weld



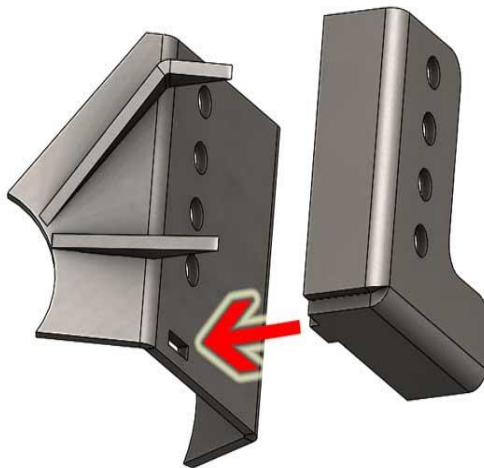
Weld edges where indicated by arrows in pictures below.



Step 6:  
Fill corner of JK Rear Track Bar Outer  
with weld.



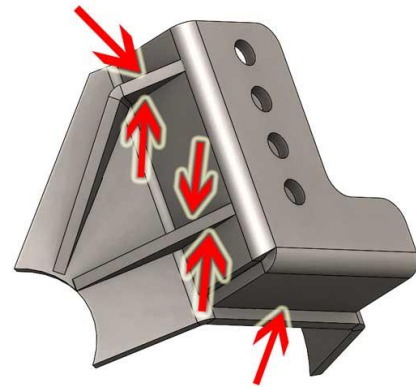
Step 7:  
Insert tab on JK Rear Track bar Outer,  
into notch on JK Rear Track Bar Inner.



Fill Notch with weld

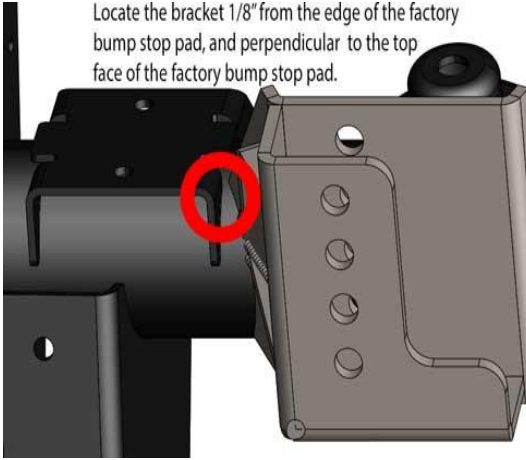


Step 8:  
Now that all your pieces have been  
welded in place. Weld remainder of  
bracket.



Step 9:  
Position trackbar bracket on axle.  
Locate the bracket 1/8" from the edge  
of the factory bump stop pad, and  
perpendicular to the top face of the  
factory bump stop pad.

Locate the bracket 1/8" from the edge of the factory bump stop pad, and perpendicular to the top face of the factory bump stop pad.



Step 10:

Tack weld into place.

Step 11:

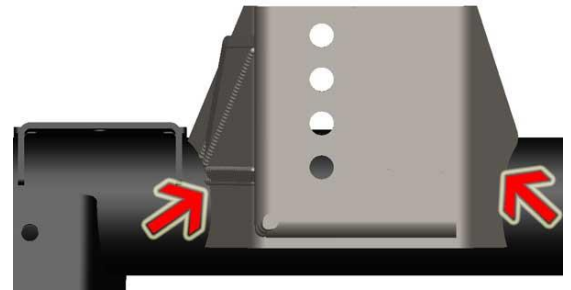
Verify location of trackbar mount. By placing trackbar at mounting location and inserting bolt. Measure to ensure axle is centered.

The lowest hole will be the stock location. This bracket has 4 mounting options from stock all the way up to 3 inches above stock in 1-inch increments, so you have numerous options that will correspond with most lifts, and future suspension upgrades.



Step 12:

With location verified remove the trackbar from the mount and fully weld bracket into place on the axle. Weld where indicated below by arrows.



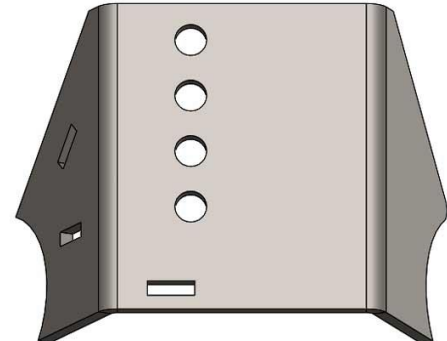
Step 13:

Now that your bracket is welded into place, bolt in trackbar.

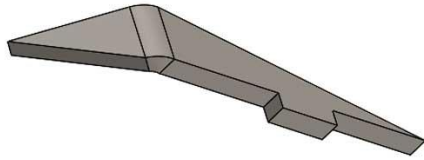
Congratulations! You have completed installation of Barnes 4WD JEEP JK REAR TRACK BAR BRACKET

Parts Included in Kit:

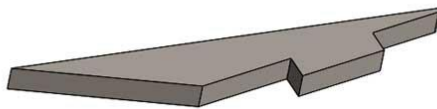
Jk Rear Track Bar Inner



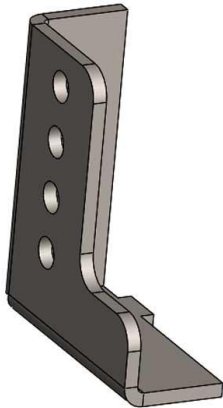
## Jk Rear Track Bar Upper Brace



## Jk Rear Track Bar Lower Brace



## Jk Rear Track Bar Outer



### Disclaimer:

#### Professional Services Disclaimer:

The content of this Website, such as text, graphics, images, information and other material (collectively, "Content") is for informational purposes only. Any information furnished on this Website is not intended nor implied to be automotive advice and is not intended to replace personal consultation with a qualified automotive service technician, mechanic or similar automotive professional.

Barnes 4WD has not examined the Content for accuracy, timeliness, completeness, appropriateness, or helpfulness. Barnes 4WD does not endorse any specific tests, products, procedures, opinions, or other information that may be mentioned on this Website. Your reliance upon information and Content obtained by you at or through this Website is solely at your own risk. IN NO EVENT SHALL BARNES 4WD BE LIABLE OR OTHERWISE RESPONSIBLE FOR ANY DAMAGE OR INJURY (INCLUDING DEATH) TO YOU, OTHER PERSONS, OR PROPERTY ARISING FROM ANY USE OF ANY PRODUCT, INFORMATION, IDEA, OR INSTRUCTION CONTAINED IN THE CONTENT.