

JEEP JK Front Frame Upper Control Arm Brackets

Thank you for purchasing Barnes 4WD
JEEP JK Front Frame Upper Control Arm
Brackets

Installation Notes:

- These brackets is designed to replace the OEM JK Front Frame Upper Control Arm Brackets
- These brackets fits 2007-2018 Jeep Wrangler JK and Jeep Wrangler JKU
- Installation of this product requires a trained welder
- Cutting off existing bracketry is required for installation
- Refer to your vehicles factory service manual for removal of any factory components

Tools Required:

- Welding machine with the capability of welding at least $\frac{1}{4}$ " steel.
- Proper cutting tool (Grinder with cut off wheel, plasma cutter, cutting torch, etc.)
- Tape Measure

Step 1:

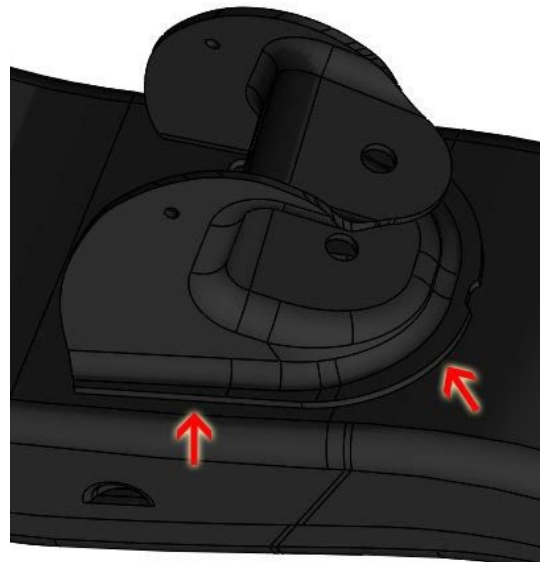
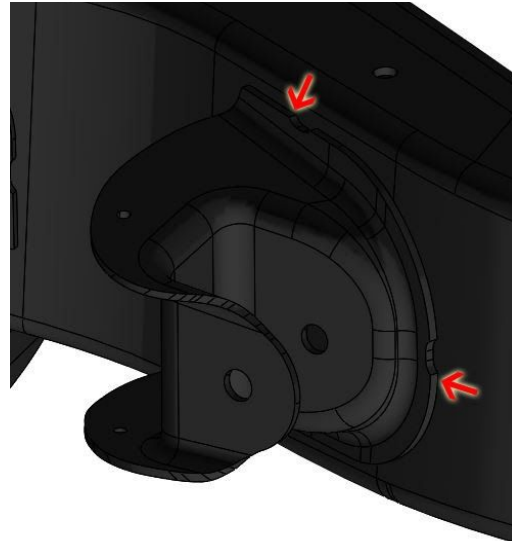
Park the Jeep on a level surface and remove the front upper control arms.

Step 2:

Measure the location of the OEM bracket on the frame. Make a note of these measurements, the Barnes 4WD Jeep JK Front Frame Upper Control Arm Brackets will need to be located in the same location as the OEM Brackets.

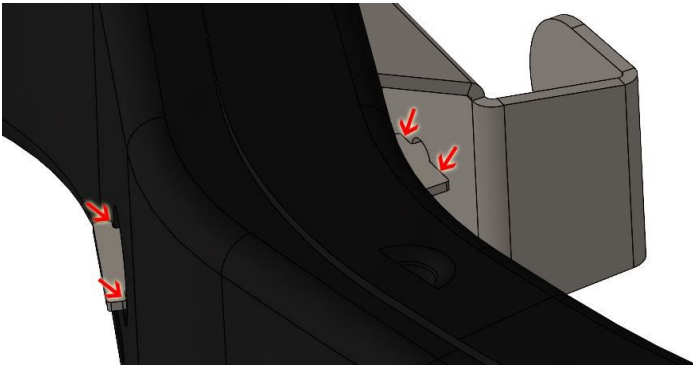
Step 3:

Using the proper cutting tool remove the OEM front frame upper control arm brackets.



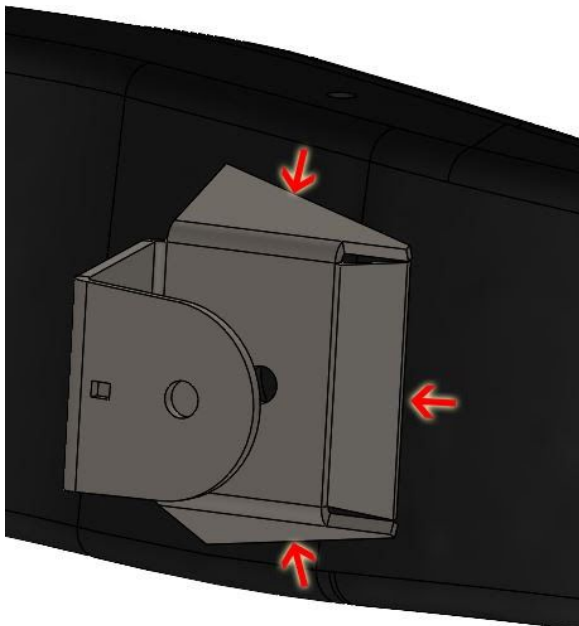
Step 4:

Place the new Barnes 4WD upper control arm bracket on the frame. Use the supplied gauge to locate the upper control arm bracket as shown in the picture below. The gauge should be touching the frame and bracket at the arrows.



Step 5:

Tack weld the bracket into place in the locations shown in the pictures below.



Step 6:

Once the bracket is tack welded into place Install the gusset onto the upper control arm and tack it into place as shown in the picture below.



Step 7:

Once the bracket has been tacked into place. Test fit the front upper control arm. Make sure to fully cycle the rear suspension to check for any clearance issues.

Step 8:

After the front upper control arm has been tested, remove the front upper control arm and fully weld the bracket in the locations it was tacked in step 6.

Step 9:

Repeat steps 2 through 8 on the opposite side of the Jeep.

Congratulations! You have Completed Installation of your Barnes 4WD JEEP JK Front Frame Upper Control Arm Bracket.

Professional Services Disclaimer:

The content of all pages of this website (collectively, the "Website"), such as text, graphics, images, information and other material (collectively, "Content") is for informational purposes only. Any information furnished on this Website is not intended nor implied to be automotive advice and is not intended to replace personal consultation with a qualified automotive service technician, mechanic, or similar automotive professional.

Barnes 4WD has not examined the Content for accuracy, timeliness, completeness, appropriateness, or helpfulness. Barnes 4WD does not endorse any specific tests, products, procedures, opinions, or other information that may be mentioned on this Website. Your reliance upon information and Content obtained by you at or through this Website is solely at your own risk. IN NO EVENT SHALL BARNES 4WD BE LIABLE OR OTHERWISE RESPONSIBLE FOR ANY DAMAGE OR INJURY (INCLUDING DEATH) TO YOU, OTHER PERSONS, OR PROPERTY ARISING FROM ANY USE OF ANY PRODUCT, INFORMATION, IDEA, OR INSTRUCTION CONTAINED IN THE CONTENT.

BARNES 4WD DOES NOT MAKE ANY REPRESENTATION OR WARRANTY, EXPRESS OR IMPLIED, AT LAW OR IN EQUITY, WITH RESPECT TO ANY PRODUCT FEATURED ON THE WEBSITE, INCLUDING WITHOUT LIMITATION WITH RESPECT TO MERCHANTABILITY, FITNESS FOR ANY PARTICULAR PURPOSE, VALUE, VALIDITY, OR ENFORCEABILITY, AND ANY AND ALL SUCH OTHER REPRESENTATIONS OR WARRANTIES ARE HEREBY EXPRESSLY DISCLAIMED.