

Thank you for purchasing Barnes 4WD
JEEP TJ, LJ, MJ, XJ, AND ZJ FRONT AXLE LOWER
CONTROL ARM BRACKETS!

Installation Notes:

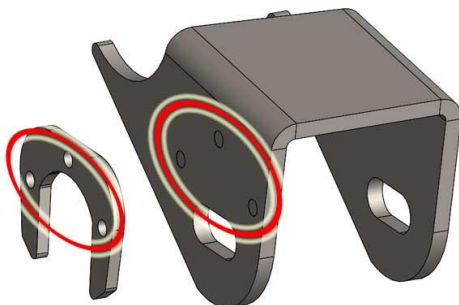
- Installation of this product requires a trained welder.
- Refer to your vehicles factory service manual for removal of any factory components.
- Factory hardware will be reused in this application.

Tools Required

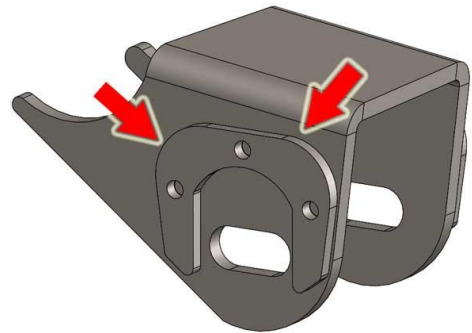
- Welding machine with the capability of welding at least 1/4" thick steel.
- Proper cutting tool (Grinder with cut off wheel, plasma cutter, cutting torch, etc.)
- Angle Finder
- Tape measure

Step 1:

Line holes in cam plate up with the etched circles on the Barnes 4WD lower control arm bracket.



Weld into place filling the holes with weld, and welding around the outside of the cam plate.



Repeat this step with both Barnes 4WD lower control arm brackets and all cam plates.

Step 2:

Measure the location of the O.E.M lower control arm brackets. This will be a good reference for mounting location, of new lower control arm brackets.

Step 3:

Remove O.E.M front lower control arm brackets. Using proper cutting tool. Cut where indicated below by pictures.



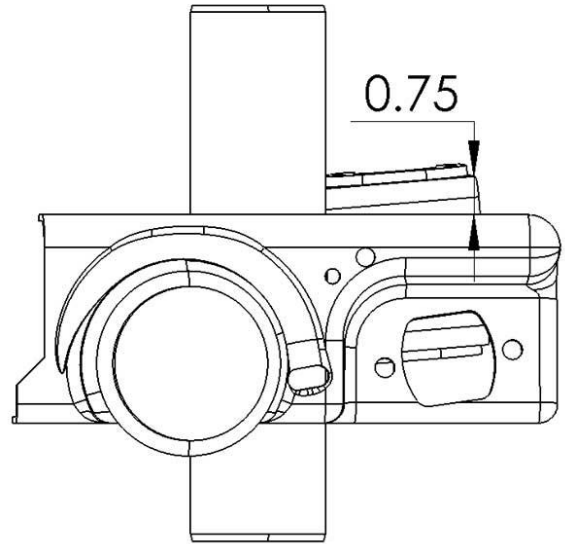


Step 4:

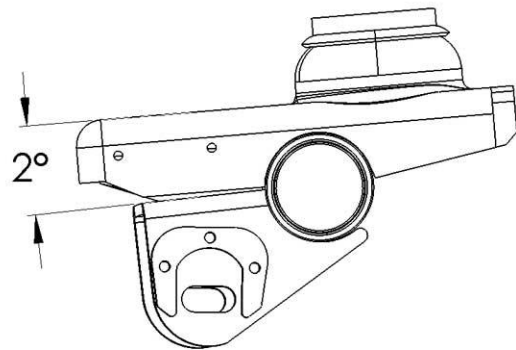
Prep axle for installation of new brackets. Grind the surface until smooth where O.E.M brackets were removed.

Step 5:

Locate Barnes 4WD lower control arm brackets onto Axle.



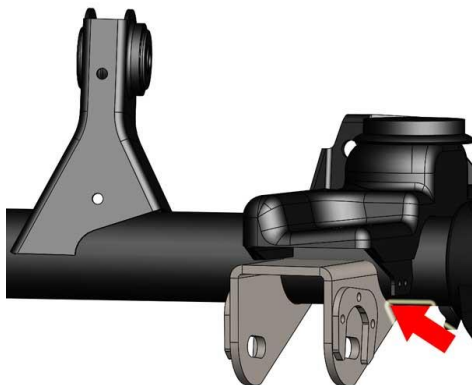
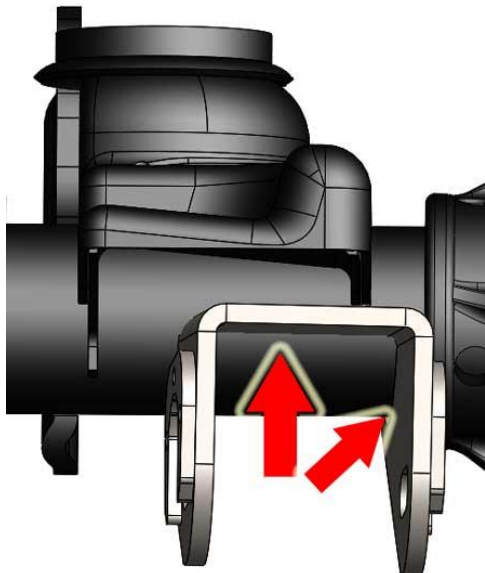
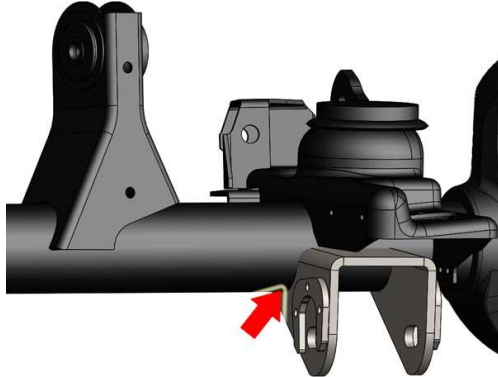
From The edge of the coil spring base, to the corner of the Barnes 4WD lower control bracket will measure $\frac{3}{4}$ " of an inch. (See image above.) This measurement will be the same for both Barnes 4WD lower control arm brackets.



From the top of the coil spring base, to the top of the Barnes 4WD lower control arm bracket will have an angle of 2° . (See image above.) This measurement will be the same for both Barnes 4WD lower control arm brackets.

Step 6:

Once the measurements from step 5 are satisfied weld your brackets into place. Weld in locations indicated with arrows.

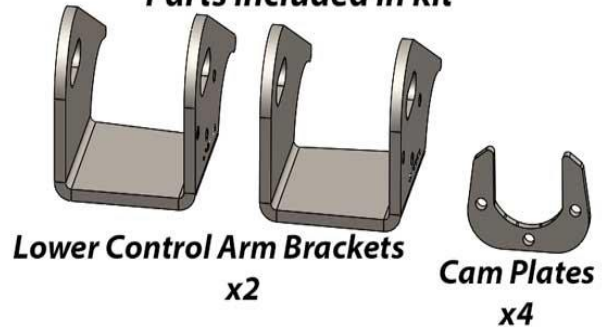


Congratulations!

You have completed installation of Barnes 4WD

JEEP TJ, LJ, MJ, XJ, AND ZJ FRONT AXLE LOWER CONTROL ARM BRACKETS!

Parts Included in kit



Professional Services Disclaimer:

The content of this Website, such as text, graphics, images, information and other material (collectively, "Content") is for informational purposes only. Any information furnished on this Website is not intended nor implied to be automotive advice and is not intended to replace personal consultation with a qualified automotive service technician, mechanic or similar automotive professional.

Barnes 4WD has not examined the Content for accuracy, timeliness, completeness, appropriateness, or helpfulness. Barnes 4WD does not endorse any specific tests, products, procedures, opinions, or other information that may be mentioned on this Website. Your reliance upon information and Content obtained by you at or through this Website is solely at your own risk. IN NO EVENT SHALL BARNES 4WD BE LIABLE OR OTHERWISE RESPONSIBLE FOR ANY DAMAGE OR INJURY (INCLUDING DEATH) TO YOU, OTHER PERSONS, OR PROPERTY ARISING FROM ANY USE OF ANY PRODUCT, INFORMATION, IDEA, OR INSTRUCTION CONTAINED IN THE CONTEN